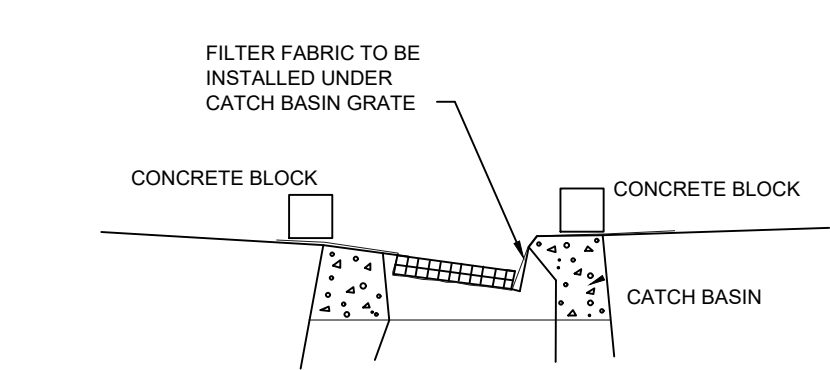
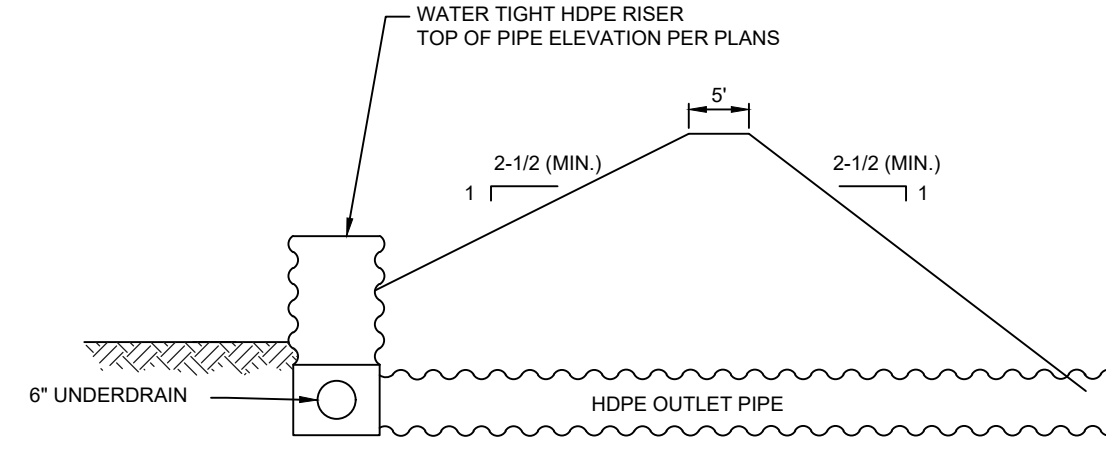


**TEMPORARY CONSTRUCTION ENTRANCE**  
NOT TO SCALE

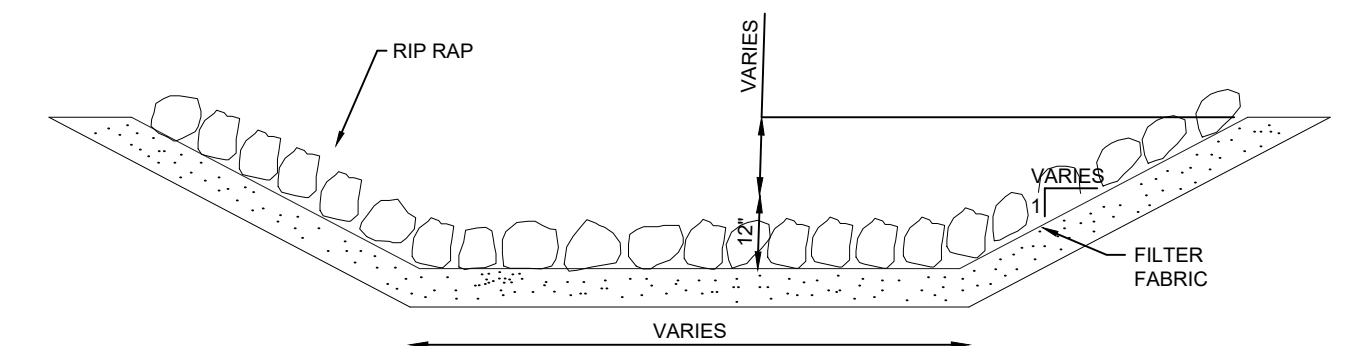
NOTE: PREMANUFACTURED FENCE MAY BE USED.  
**SEDIMENT FENCE**  
NOT TO SCALE



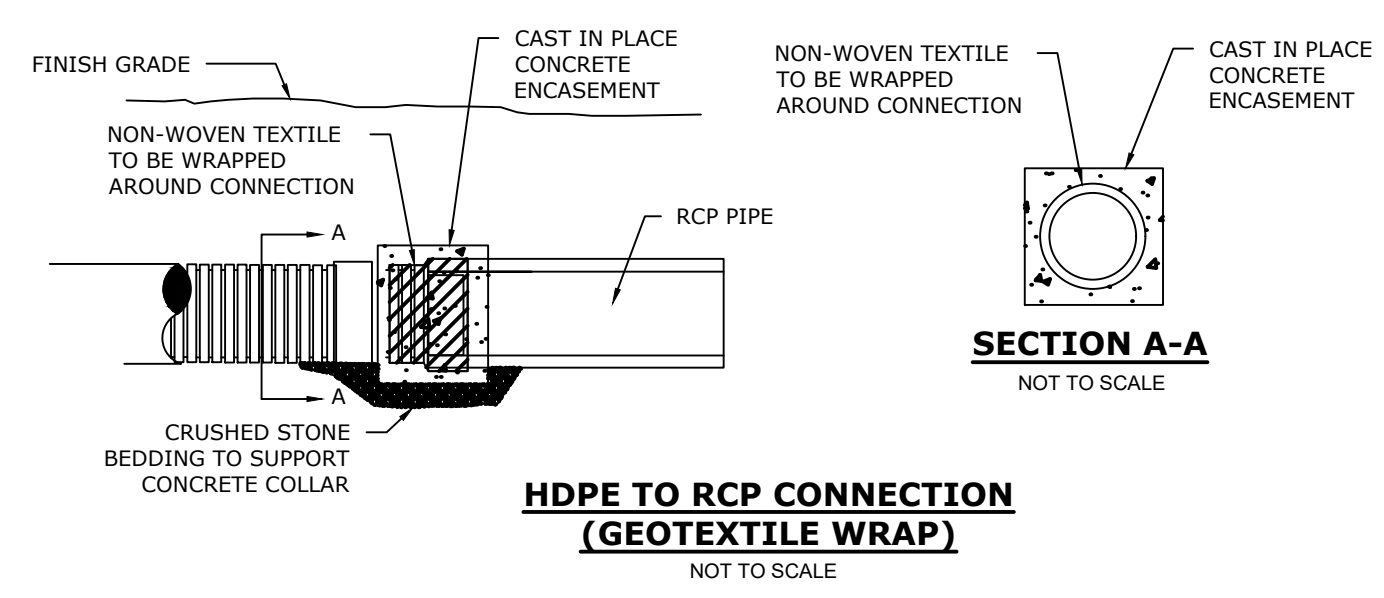
**SILTATION FABRIC INSTALLATION AT CATCH BASIN**  
NOT TO SCALE



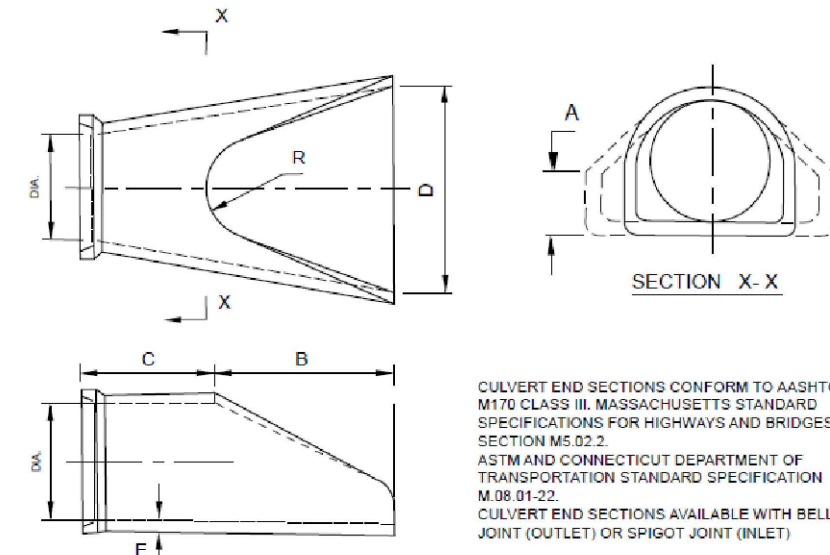
**TEMPORARY OUTLET RISER**  
NOT TO SCALE



**RIP RAP SWALE**  
NOT TO SCALE

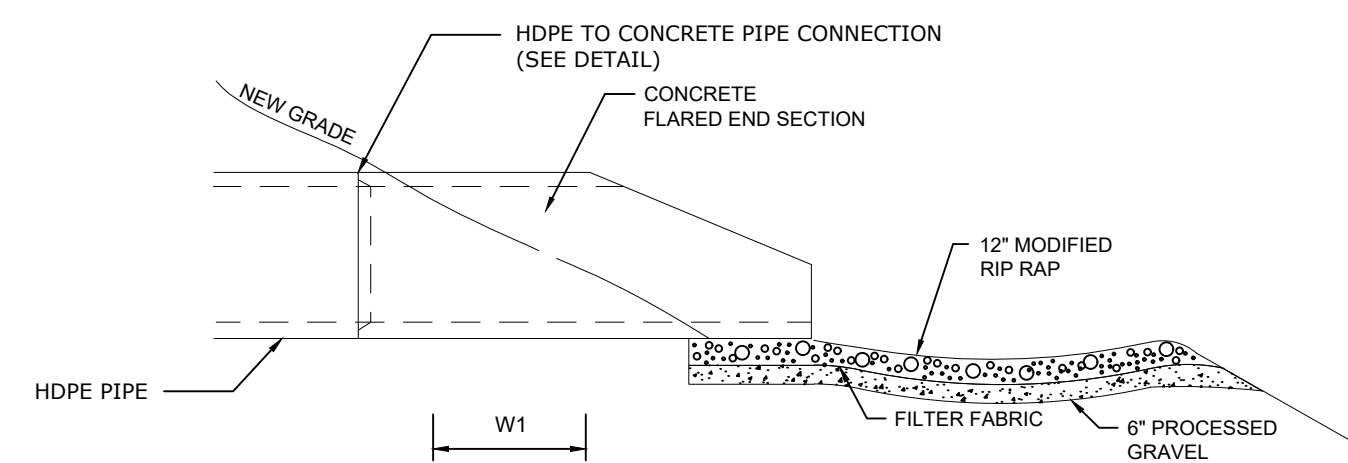


**HDPE TO RCP CONNECTION (GEOTEXTILE WRAP)**  
NOT TO SCALE



**REINFORCED CONCRETE CULVERT ENDS**  
NOT TO SCALE

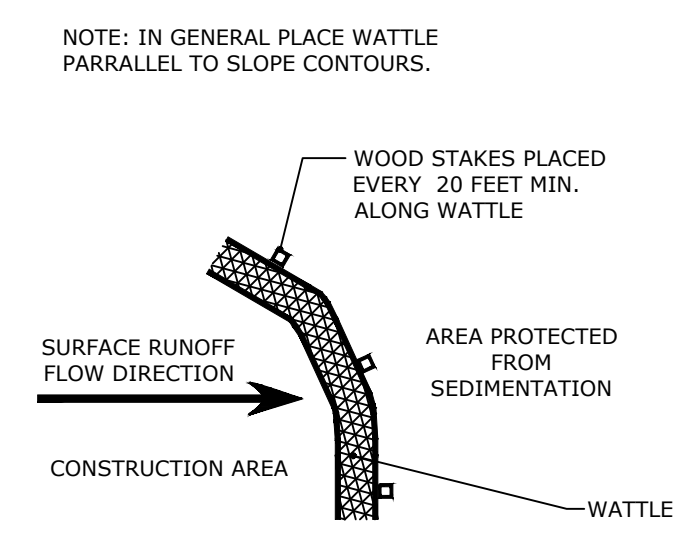
SIZE	A	B	C	D	E	F
18"	11.00	11.00	11.00	11.00	11.00	11.00
24"	15.00	15.00	15.00	15.00	15.00	15.00
30"	19.00	19.00	19.00	19.00	19.00	19.00
36"	23.00	23.00	23.00	23.00	23.00	23.00
42"	27.00	27.00	27.00	27.00	27.00	27.00
48"	31.00	31.00	31.00	31.00	31.00	31.00
54"	35.00	35.00	35.00	35.00	35.00	35.00
60"	39.00	39.00	39.00	39.00	39.00	39.00



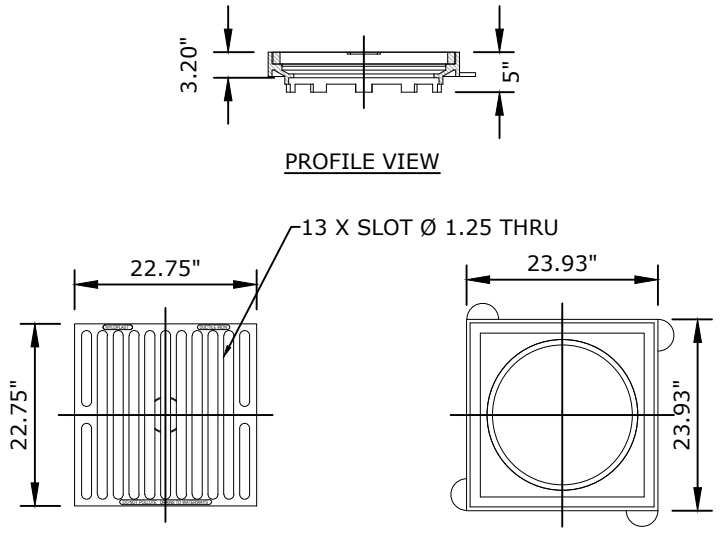
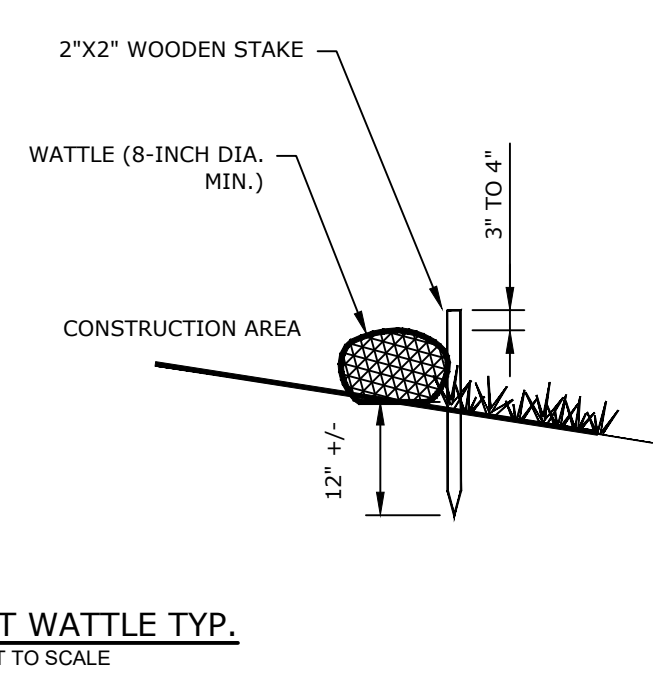
OUTLET	W1	L1	W2
1	3'	10'	10'
2	3'	10'	10'
3	5'	12'	13'

NOTE: IN ACCORDANCE WITH CT DOT DRAINAGE MANUAL SECTION 11.13 - OUTLET PROTECTION, ALL APRON STONE SHALL BE MODIFIED RIPRAP (DISCHARGE VELOCITY < 8 FT/S)

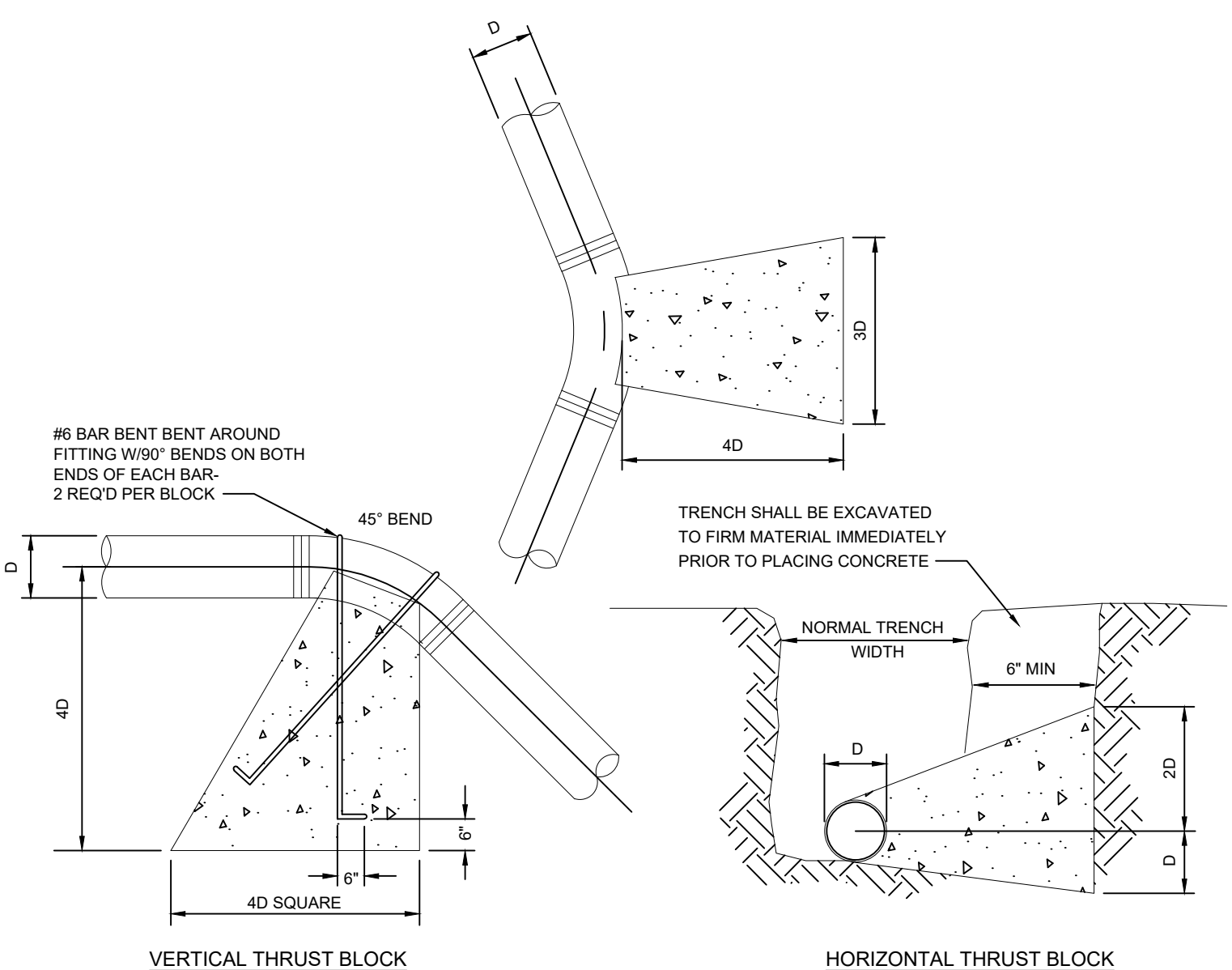
**RIPRAP APRON**  
NOT TO SCALE



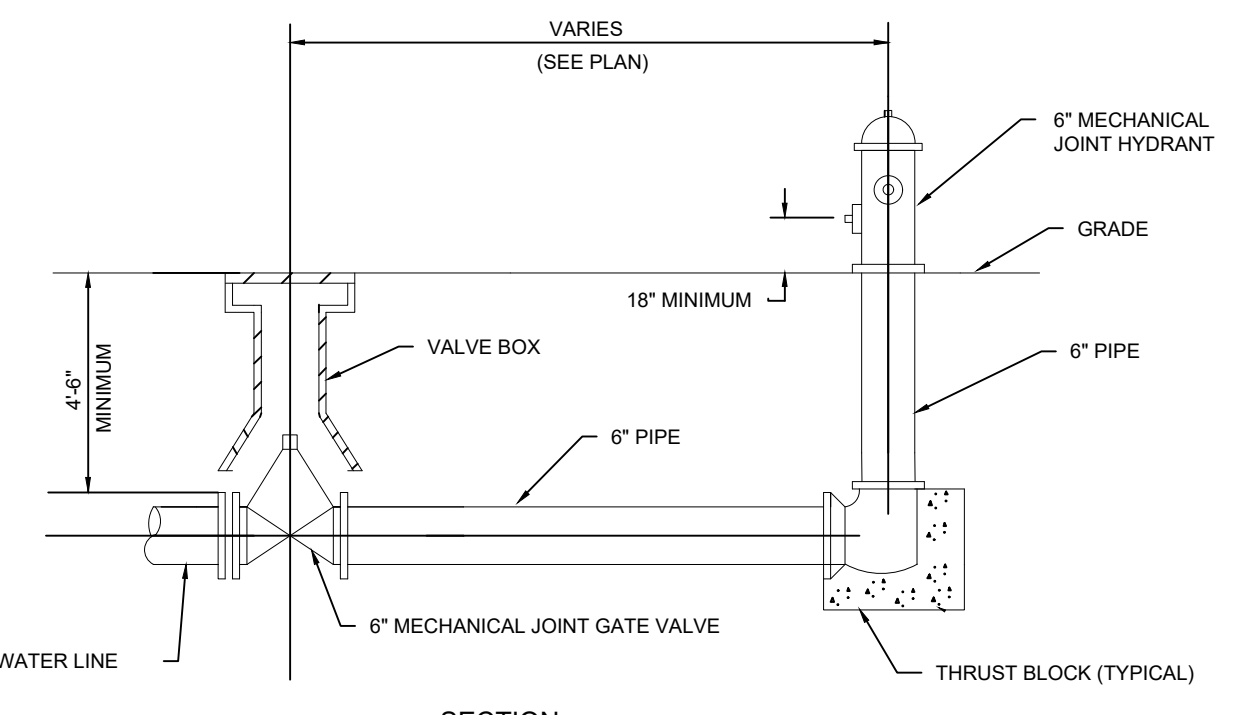
**COMPOST WATTLE TYP.**  
NOT TO SCALE



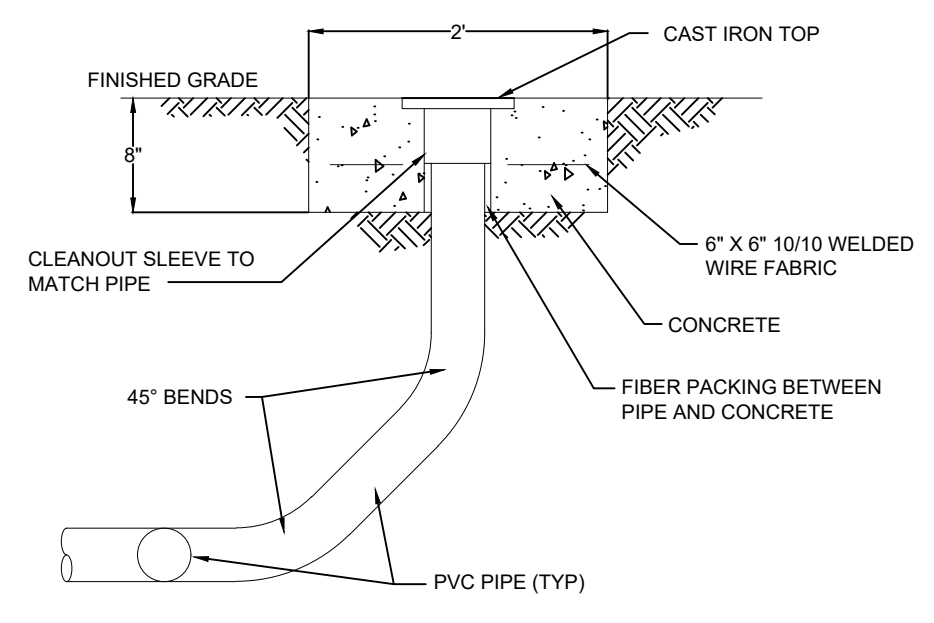
**2' X 2' NYLOPLAST ROAD & HIGHWAY GRATE**  
NOT TO SCALE



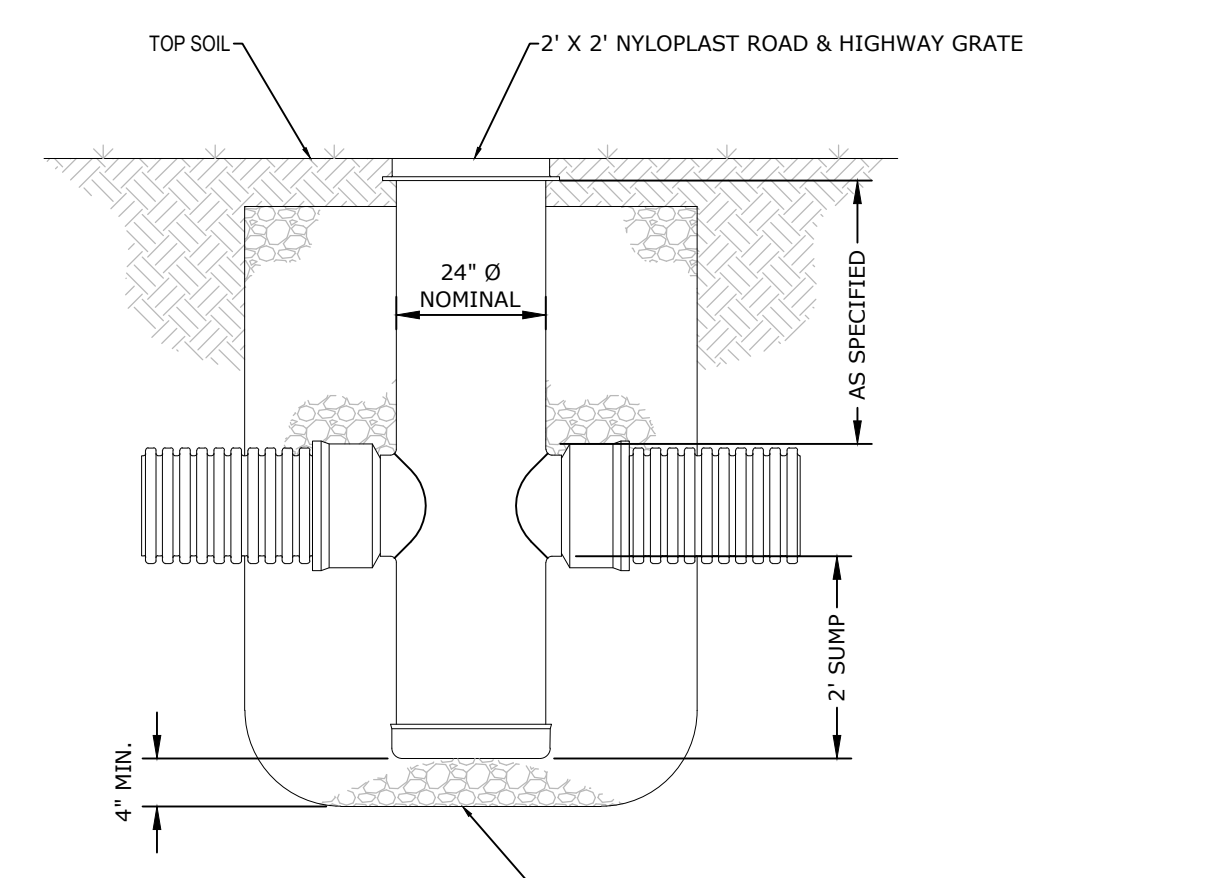
**CONCRETE THRUST BLOCKING**  
NOT TO SCALE



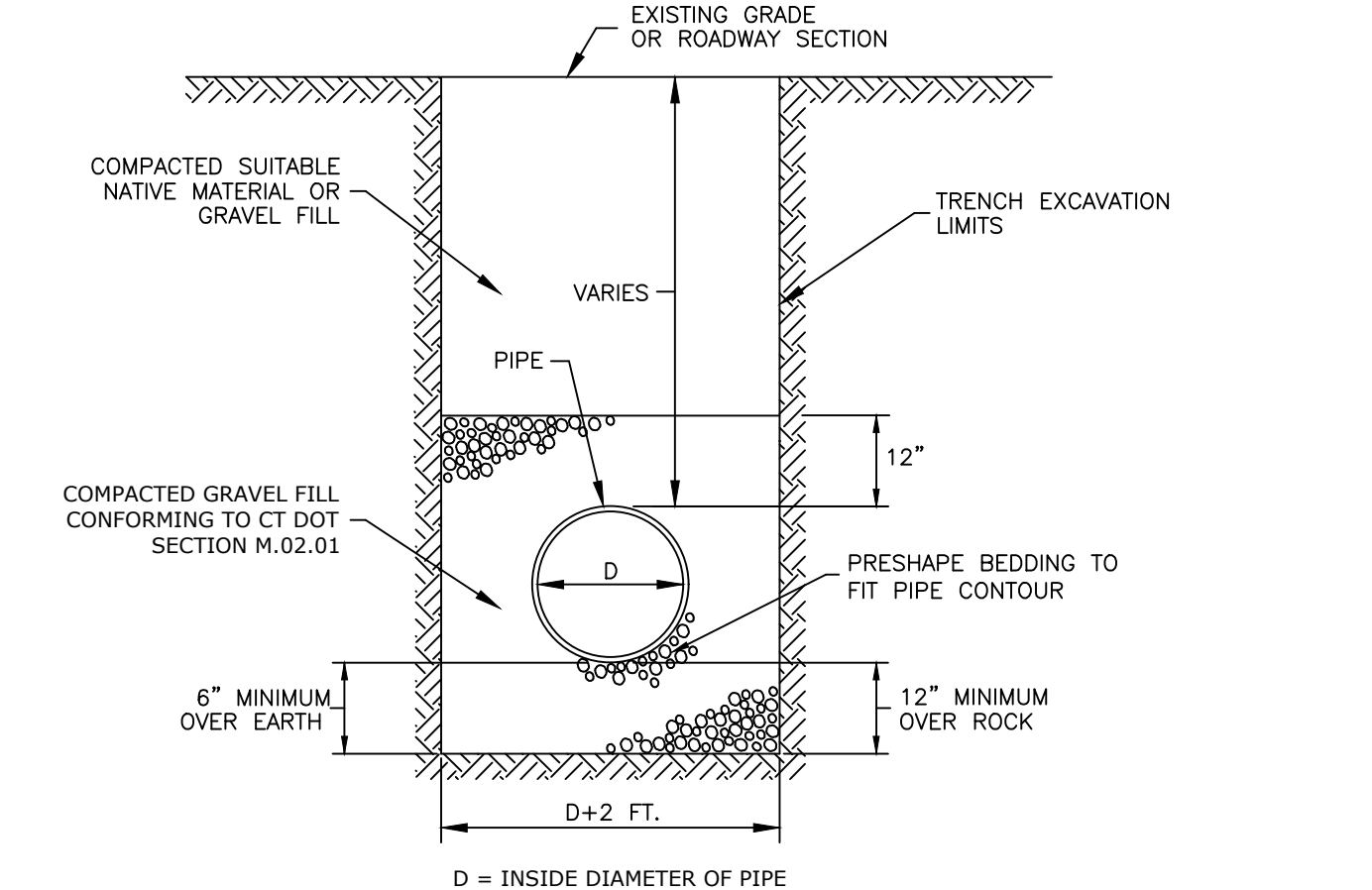
**TYPICAL HYDRANT INSTALLATION**  
NOT TO SCALE



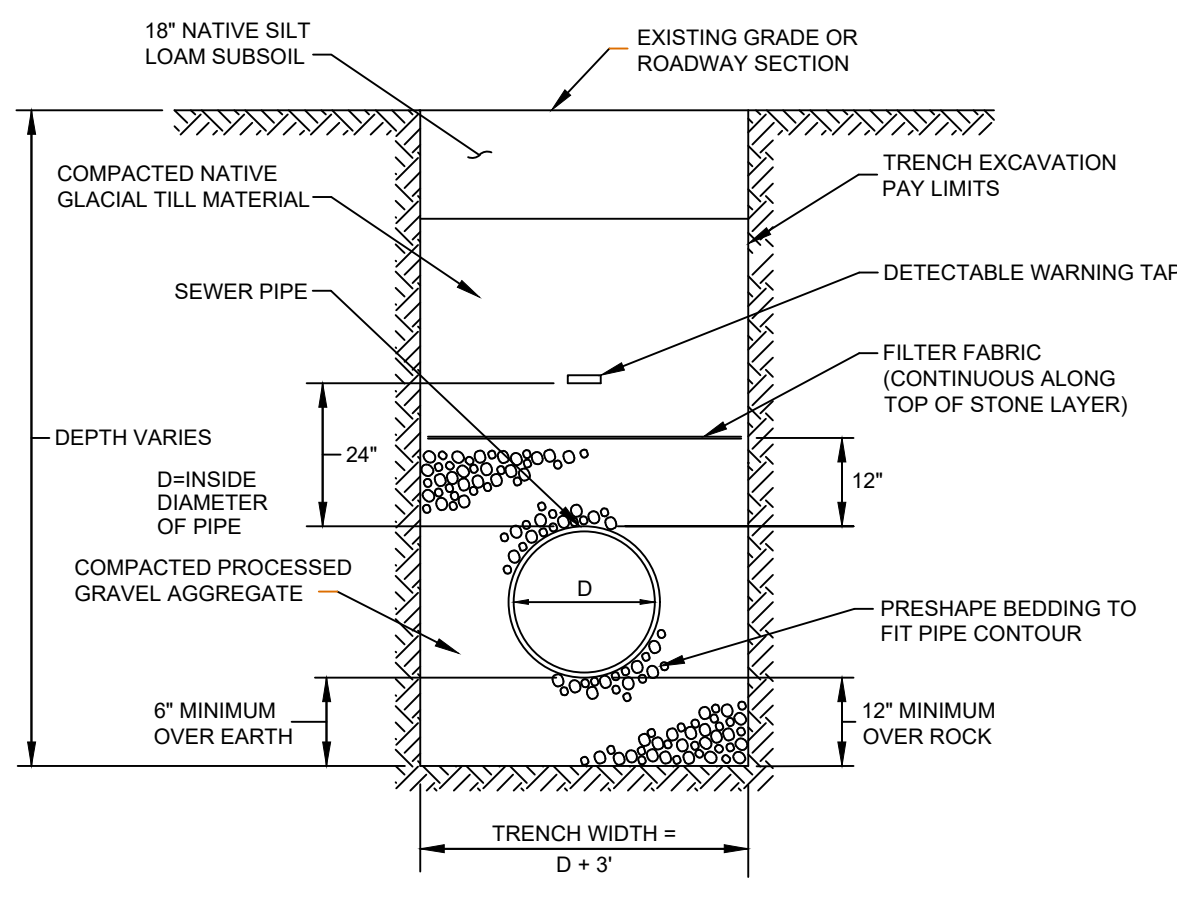
**SEWER CLEANOUT DETAIL**  
NOT TO SCALE



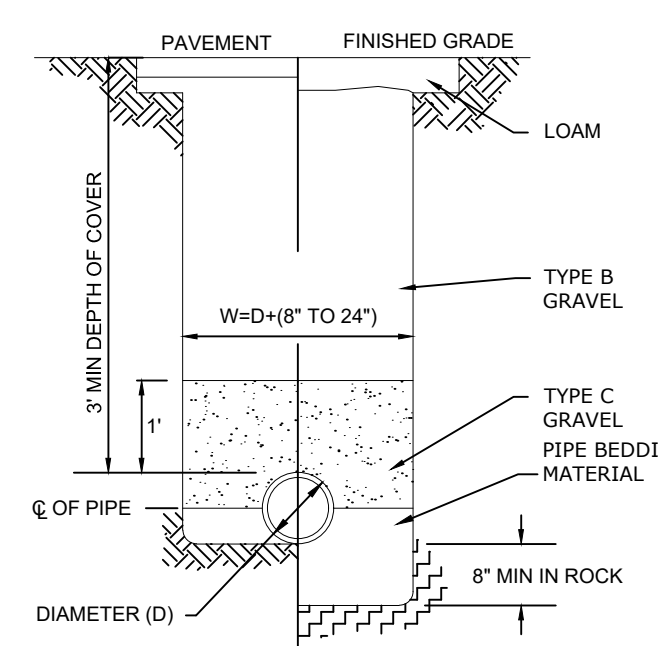
**NYLOPLAST DRAIN BASIN**  
NOT TO SCALE



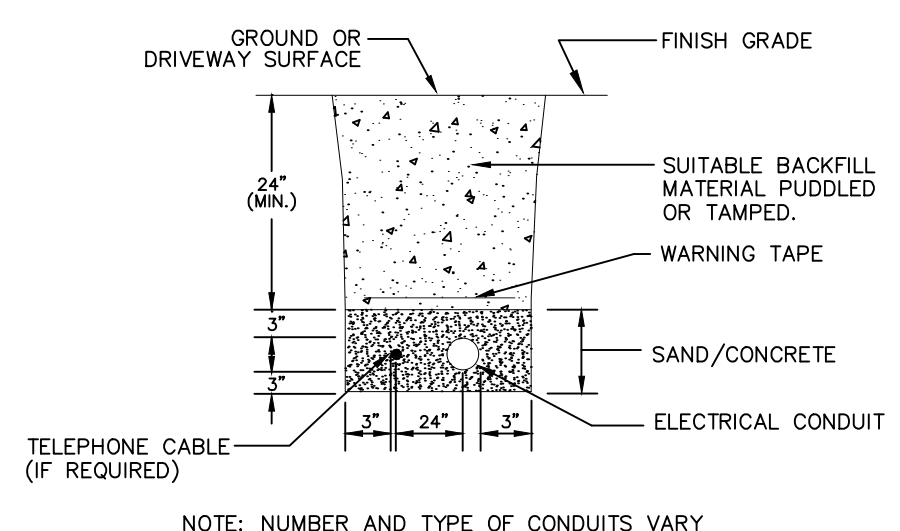
**STORM DRAIN TRENCH**  
NOT TO SCALE



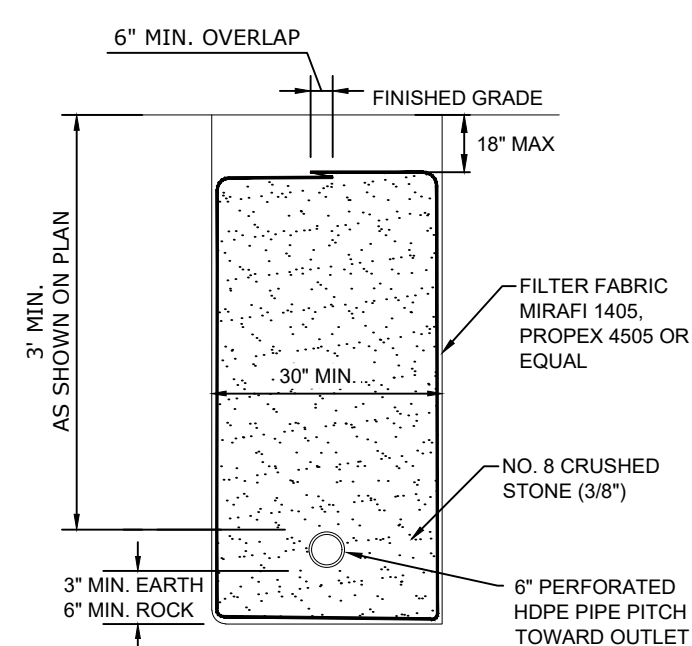
**SANITARY SEWER TRENCH**  
NOT TO SCALE



**WATER LINE TRENCH**  
NOT TO SCALE

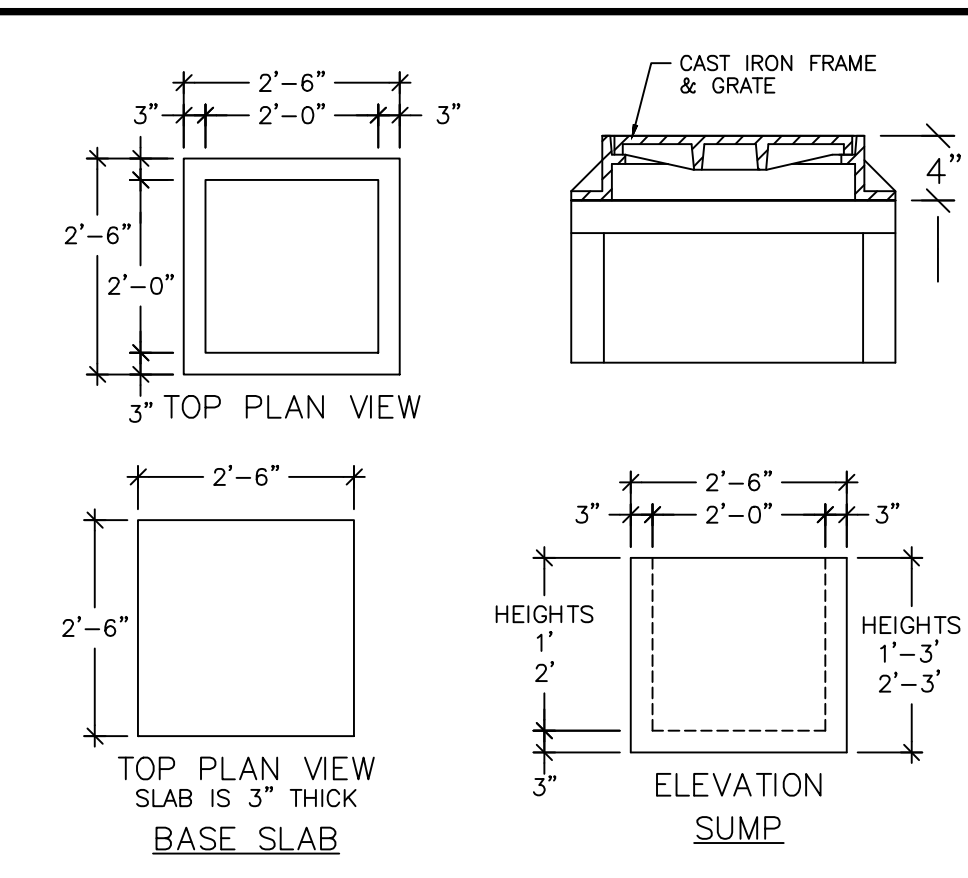


**ELECTRICAL LINE TRENCH**  
NOT TO SCALE



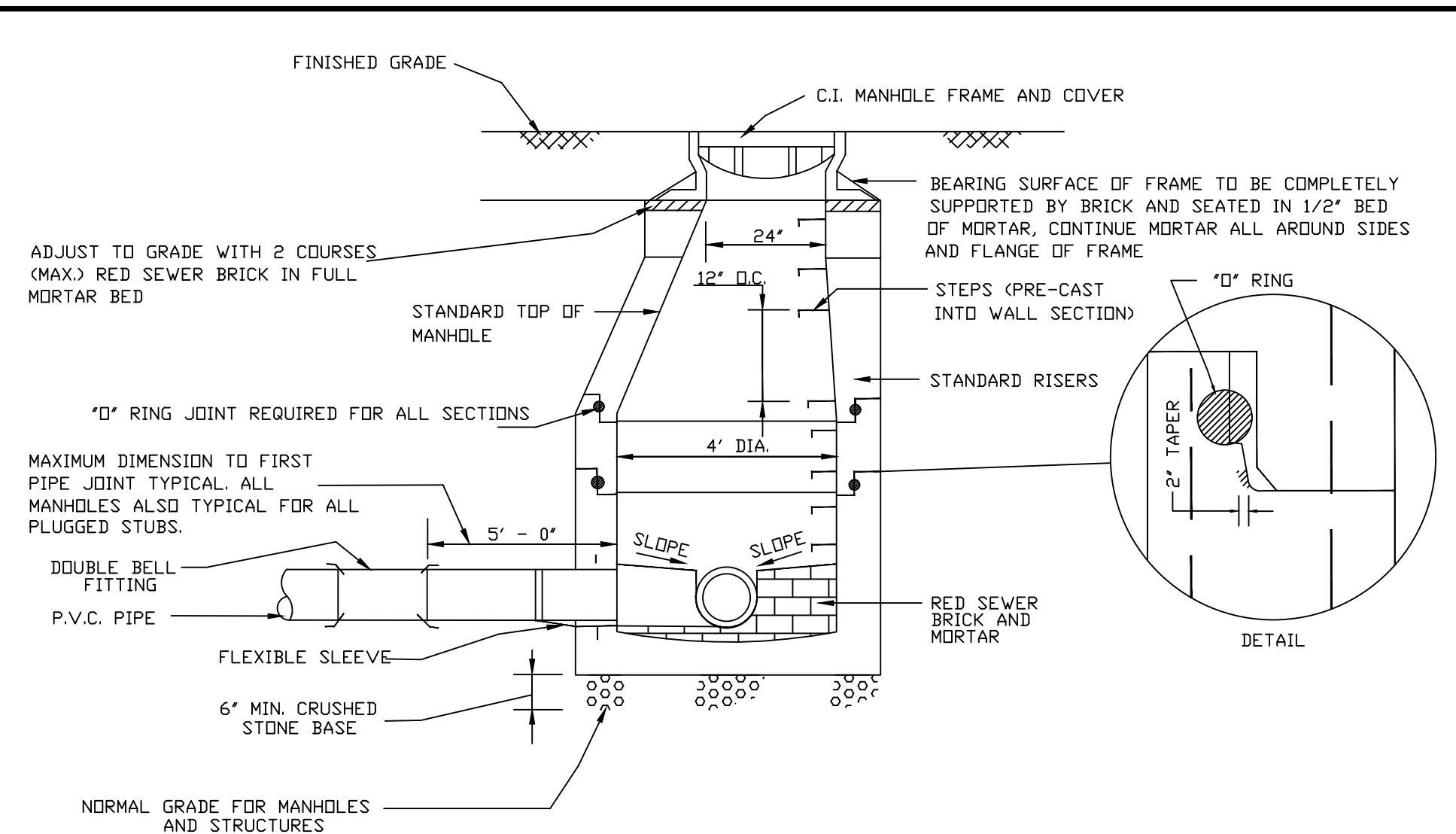
**UNDER DRAIN**  
NOT TO SCALE

DATE	11/15/2021	DATE	11/15/2021
REVISION	1	DESCRIPTION OF REVISION	TWC AND PZC SUBMISSION
SCALE	NOT TO SCALE	SCALE	NOT TO SCALE
CORR. NO.	88VA9 01	CORR. NO.	88VA9 01
DRAWN BY	BJM	DRAWN BY	BJM
APPROVED BY	PB	APPROVED BY	PB
DATE	3/11/2021	DATE	3/11/2021
<b>DETAILS</b>			
<b>VILLAGE APARTMENTS - PHASE III</b>			
15 JEROME AVENUE, 82 JEROME ROAD AND 232 ROUTE 32, UNCASVILLE - MONTVILLE, CT			
<b>VILLAGE APARTMENTS LLC AND CONNECTICUT MULTIFAMILY EQUITIES II, LLC</b>			
1099 NORTH STREET, WHITE PLAINS, NY			
V:\CT\UNCASVILLE\BID-001015 PHASE III\DWG\DETAILS 2 SHOWN 142022-2-135 PLAN FRAME 1.102222-2-13 48			
DRAWING	<b>19000079.11</b>		
SHEET NO.	10	NO. OF SHEETS	13

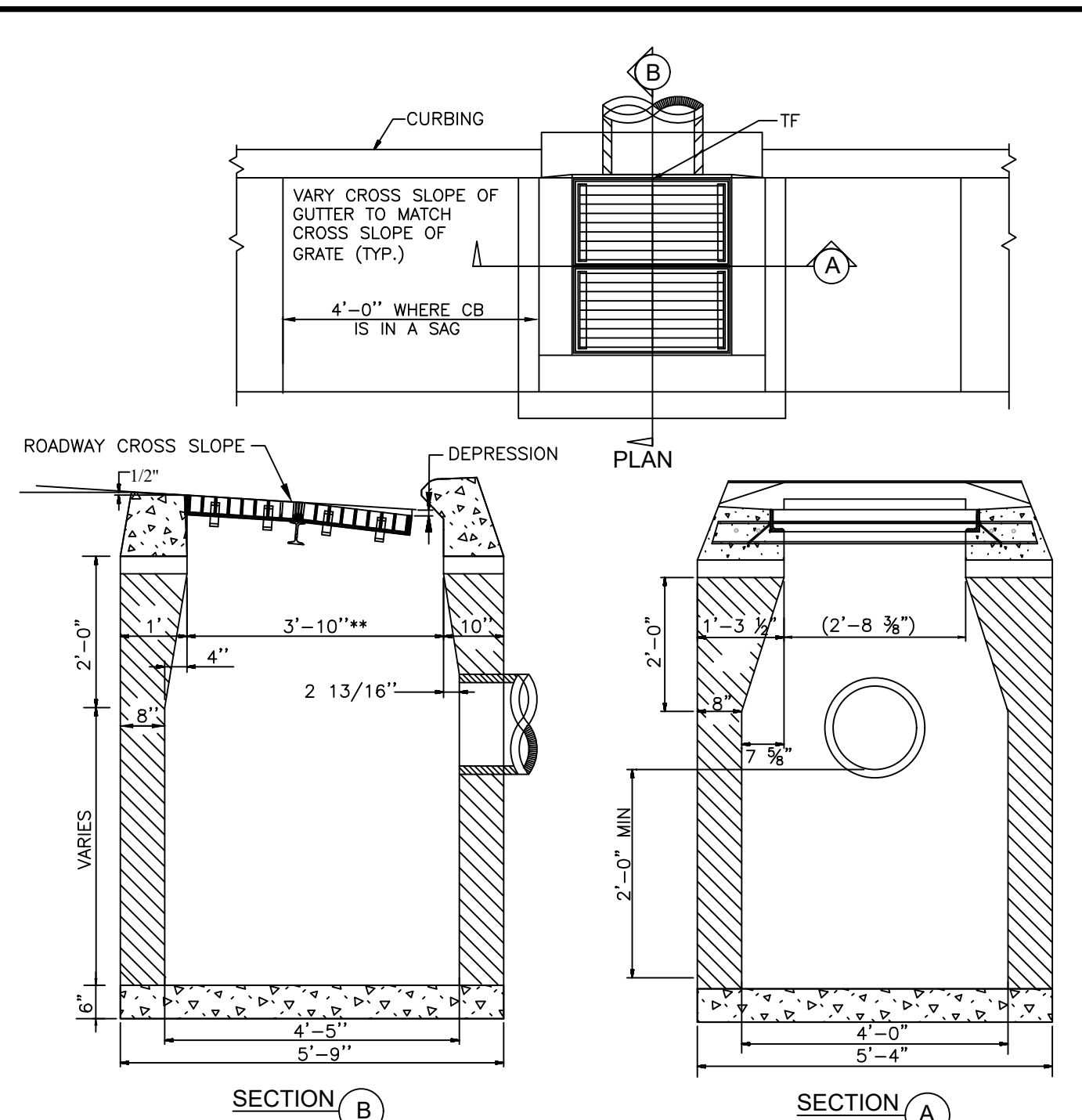


NOTES:  
 1. REINFORCING STEEL WELDED WIRE FABRIC CONFORMS TO LATEST ASTM SPECIFICATION A185.  
 2. REINFORCING STEEL DEFORMED BARS CONFORM TO LATEST ASTM SPECIFICATION A615.  
 3. CONCRETE COMPRESSIVE STRENGTH - 4000 PSI AT 28 DAYS.  
 4. METHOD OF MANUFACTURE, WET CAST.  
 5. SECTION IS MONOLITHIC.  
 6. DESIGN LOAD: AASHTO H-20

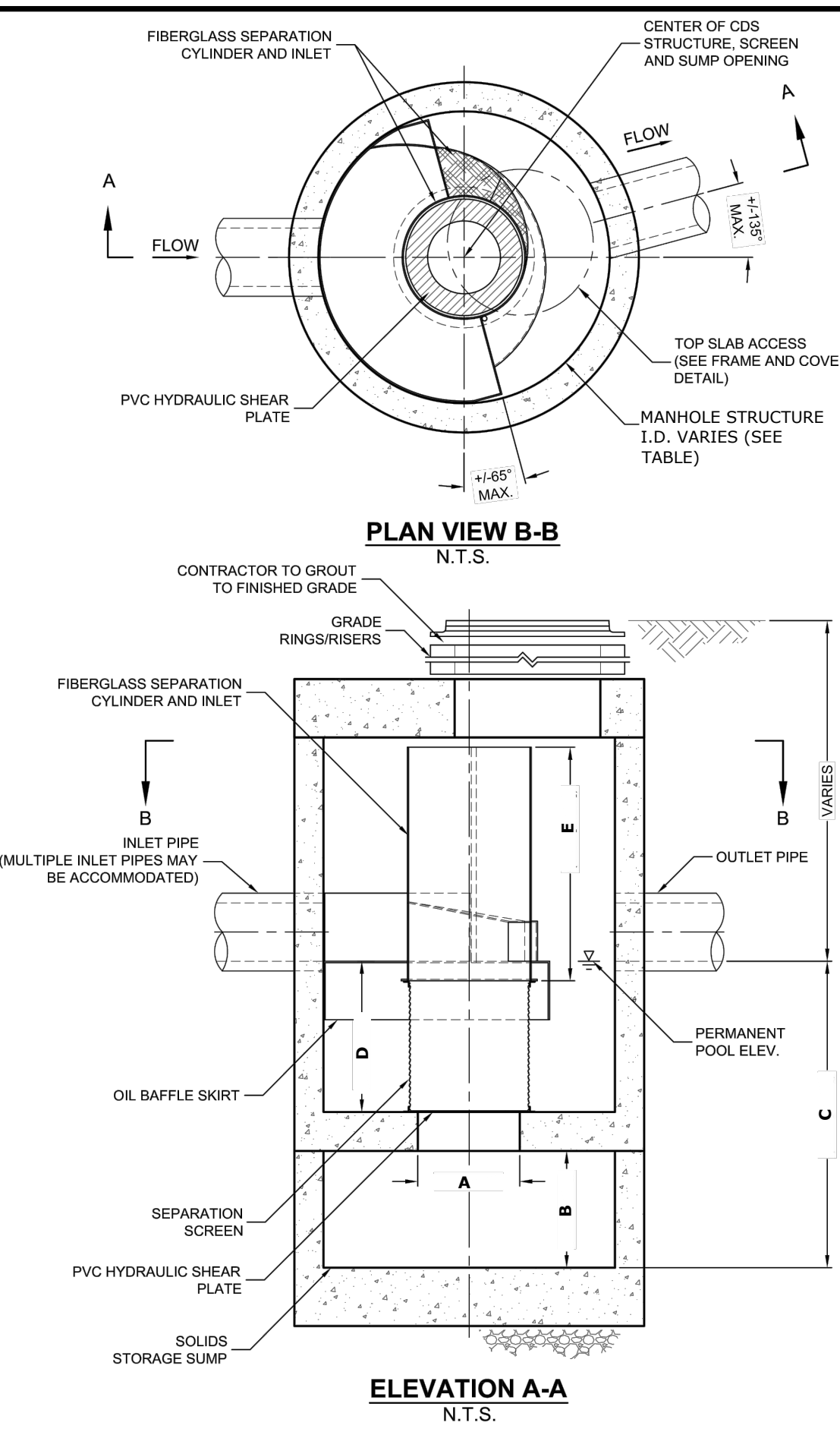
**YARD DRAIN DETAIL**  
NOT TO SCALE



**SANITARY SEWER MANHOLE**  
NOT TO SCALE

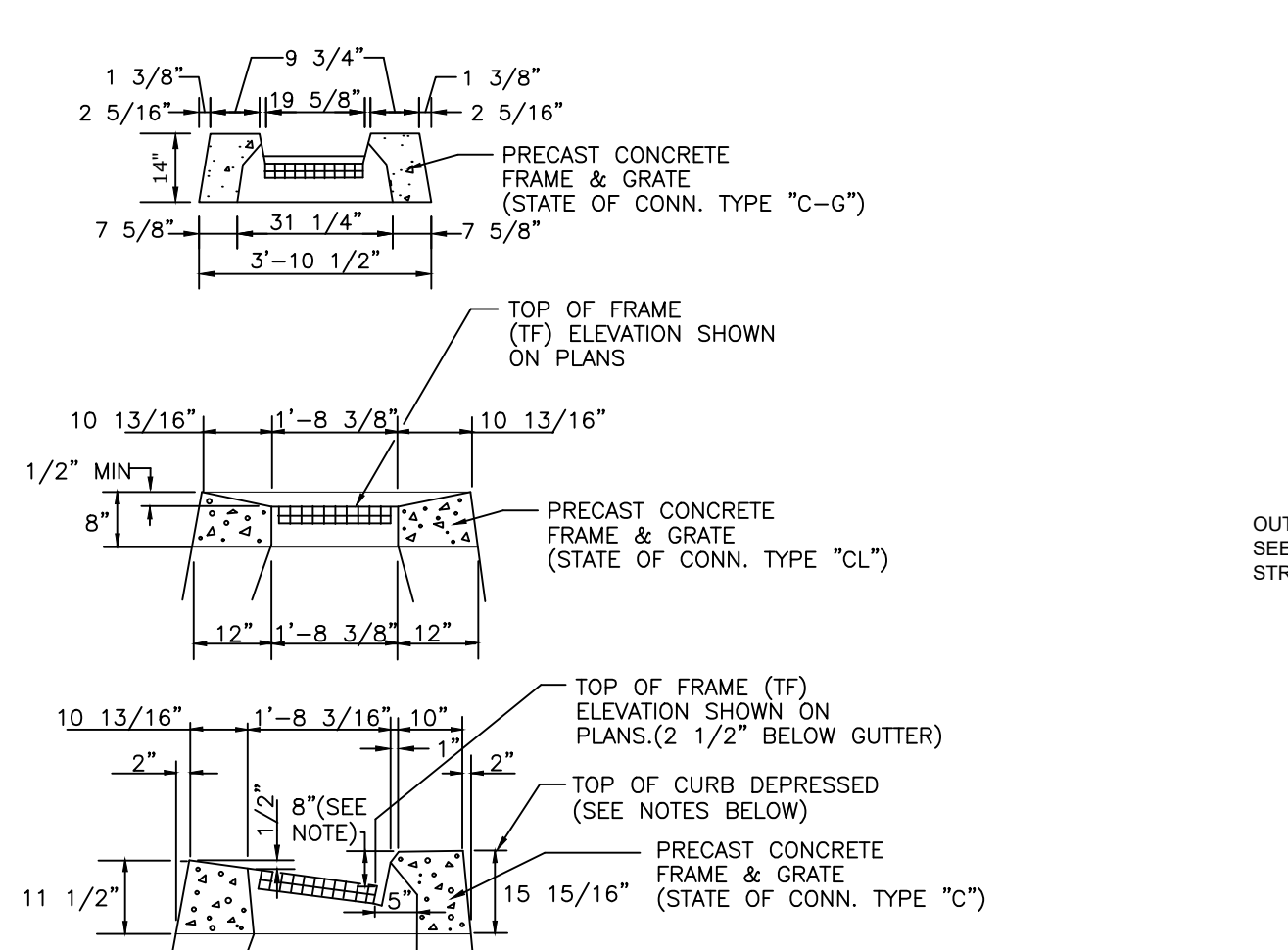


**TYPE 'C' CATCH BASIN DOUBLE GRATE - TYPE I**  
NOT TO SCALE

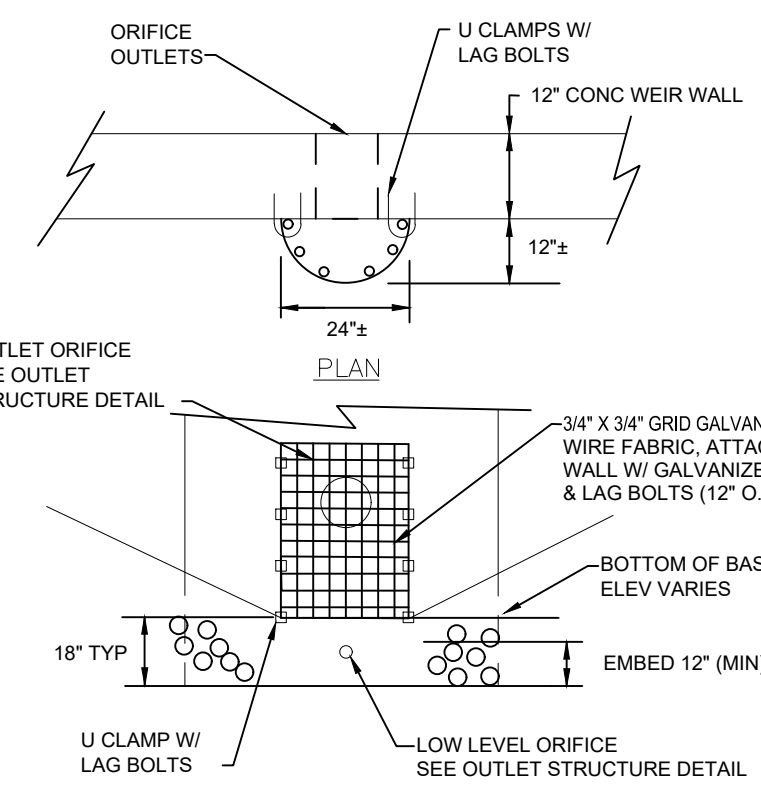


**PLAN VIEW B-B**  
N.T.S.

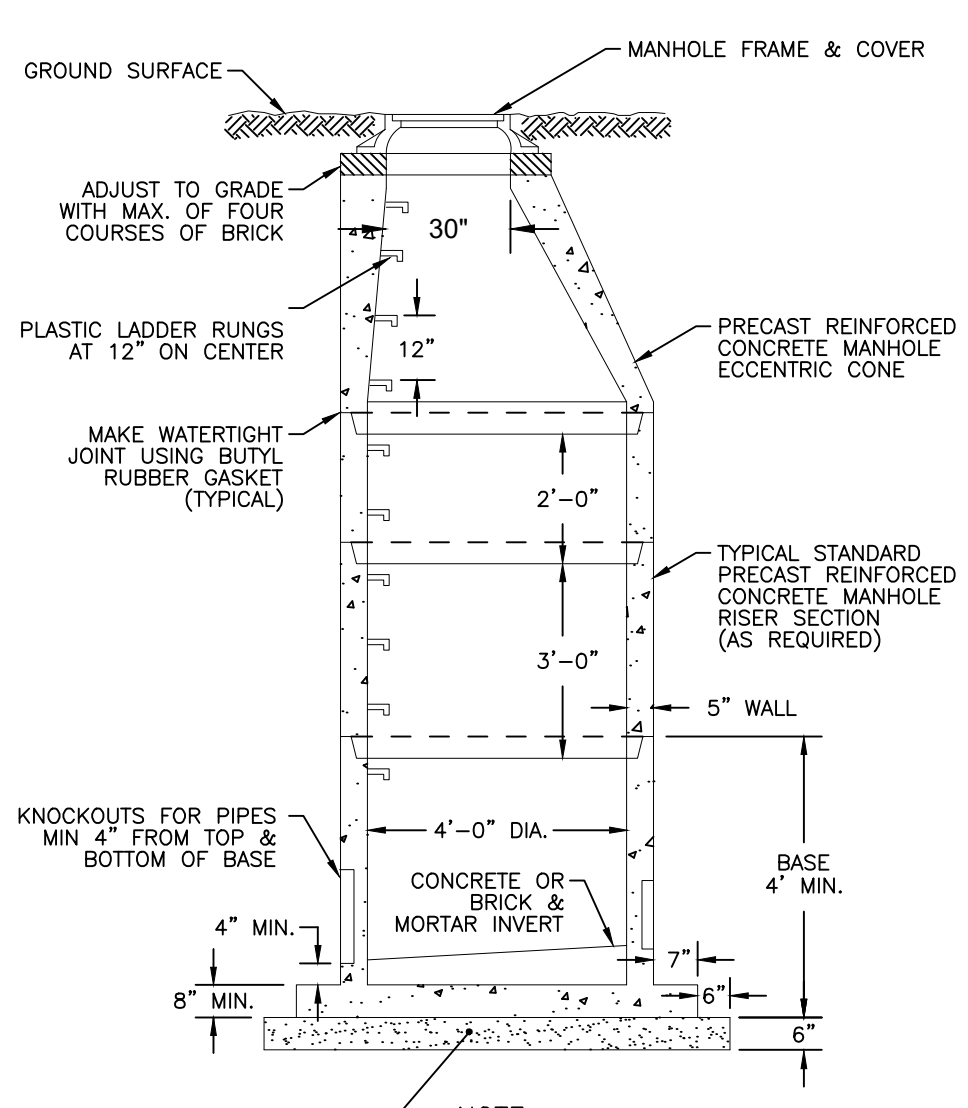
**ELEVATION A-A**  
N.T.S.



**FRAME AND GRATE FOR TYPE 'C', 'CL' OR 'C-G' CATCH BASIN**  
NOT TO SCALE

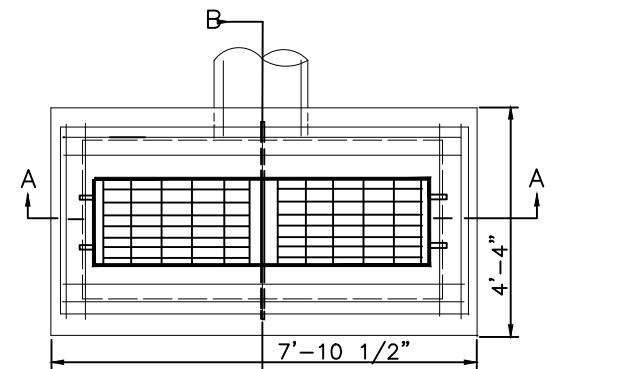


**OUTLET TRASH RACK**  
NOT TO SCALE

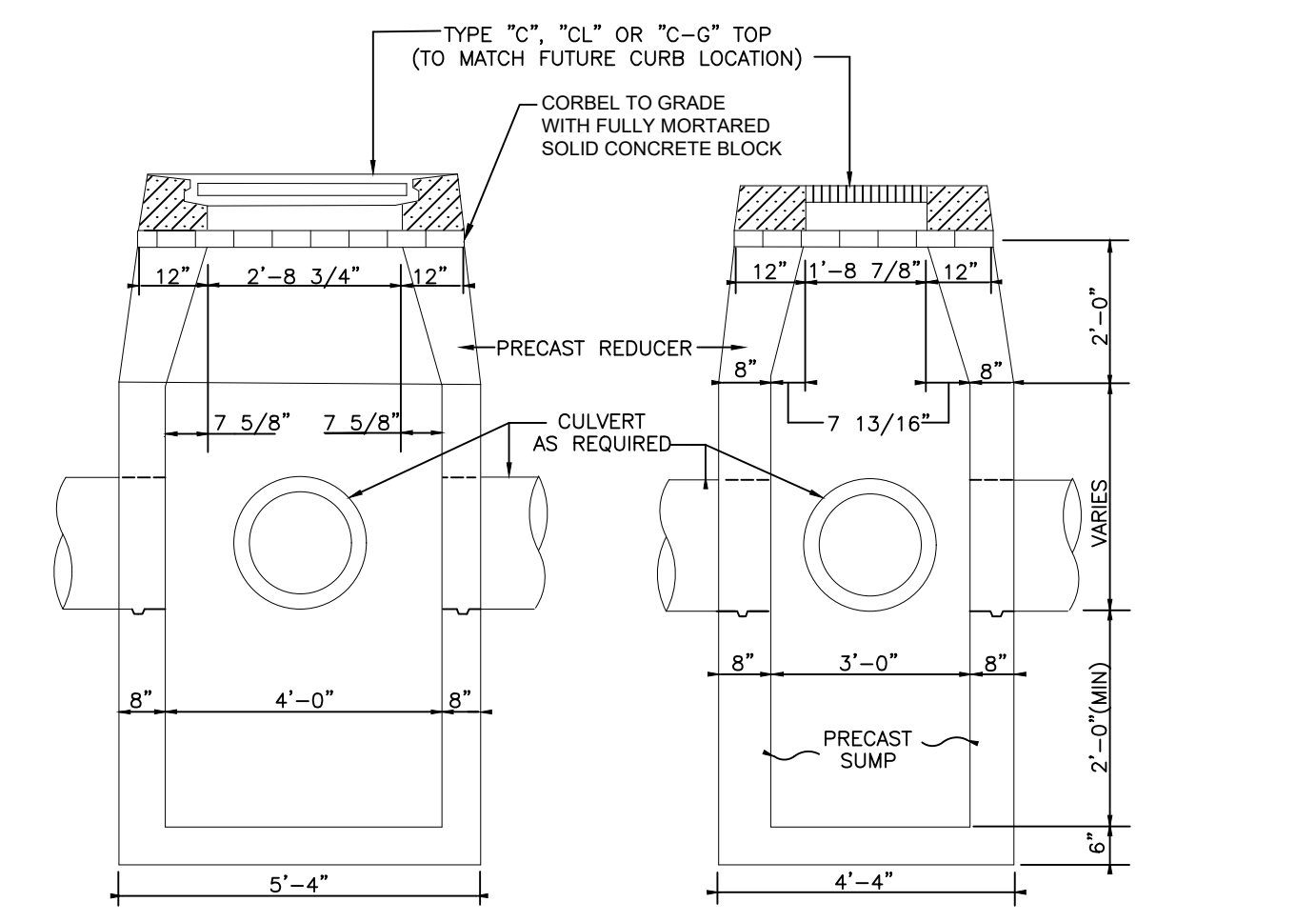


**PRECAST CONCRETE DRAINAGE MANHOLE**  
NOT TO SCALE

NOTES:  
 1. 8" HEIGHT IS FOR BITUMINOUS CONCRETE LIP CURB  
 2. 7" HEIGHT WILL BE USED FOR CONCRETE CURB.  
 3. TRANSITION ELEVATION OF TOP OF CURB TO MATCH STANDARD GRADE 5' EACH SIDE OF CATCH BASIN.



**TYPE 'C-L' CATCH BASIN DOUBLE GRATE - TYPE II**  
NOT TO SCALE



**TYPE 'C', 'CL' OR 'C-G' CATCH BASIN WITH SUMP**  
NOT TO SCALE

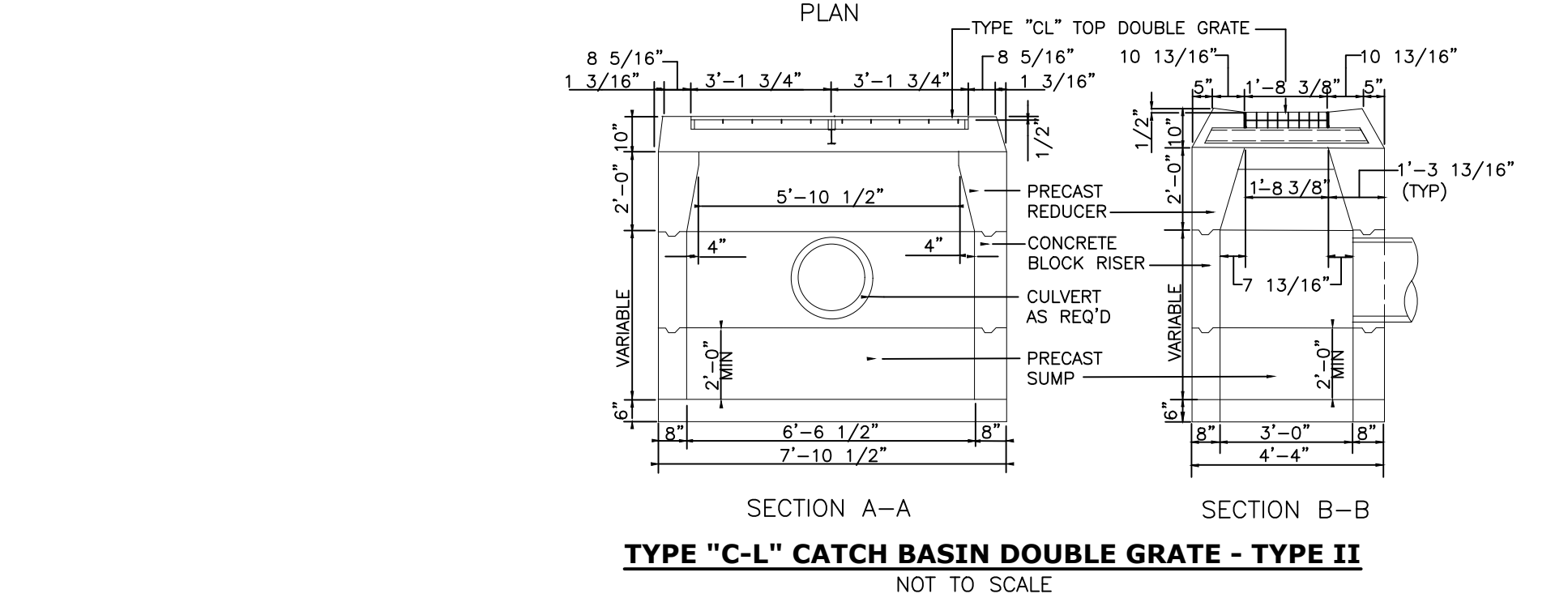
**INSTALLATION NOTES**  
 A. ANY SUB-BASE BACKFILL DEPTH AND/OR ANTI-FLOTATION PROVISIONS ARE SITE-SPECIFIC DESIGN CONSIDERATIONS AND SHALL BE SPECIFIED BY ENGINEER OF RECORD.  
 B. CONTRACTOR TO PROVIDE EQUIPMENT WITH SUFFICIENT LIFTING AND REACH CAPACITY TO LIFT AND SET THE CDS MANHOLE STRUCTURE (LIFTING CLUTCHES PROVIDED).  
 C. CONTRACTOR TO ADD JOINT SEALANT BETWEEN ALL STRUCTURE SECTIONS, AND ASSEMBLE STRUCTURE.  
 D. CONTRACTOR TO PROVIDE, INSTALL, AND GROUT PIPES. MATCH PIPE INVERTS WITH ELEVATIONS SHOWN.  
 E. CONTRACTOR TO TAKE APPROPRIATE MEASURES TO ASSURE UNIT IS WATER TIGHT, HOLDING WATER TO FLOWLINE INVERT MINIMUM. IT IS SUGGESTED THAT ALL JOINTS BELOW PIPE INVERTS ARE GROUTED.

**INLINE CDS STRUCTURE TABLE**

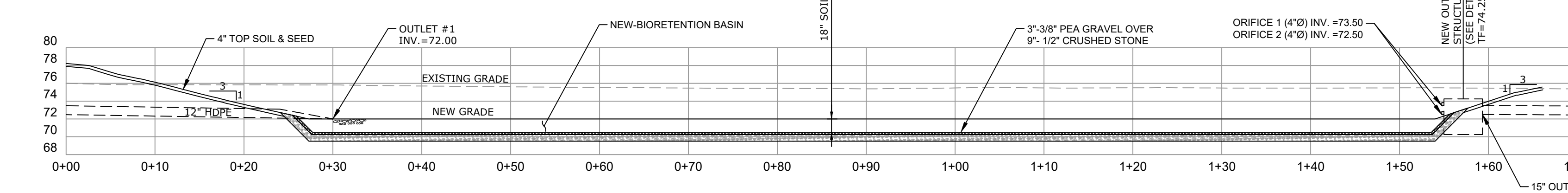
STRUCTURE ID	SYSTEM MODEL	MANHOLE I.D.	DIMENSION 'A'	DIMENSION 'B'	DIMENSION 'C'	DIMENSION 'D'	DIMENSION 'E'
CDS1, CDS4	CDS2020-5-C	60"	1'-9"	2'-0"	5'-3"	2'-7"	4'-0"
CDS2, CDS3	CDS1515-3-C	36"	1'-4"	2'-0"	4'-2"	1'-8"	4'-0"
CDS5	CDS3035-6-C	72"	1'-9"	2'-0"	6'-9"	4'-1"	4'-0"
CDS6	CDS2015-4-C	48"	1'-9"	2'-0"	4'-6"	2'-0"	4'-0"

**INLINE CDS STANDARD DETAIL**  
NOT TO SCALE

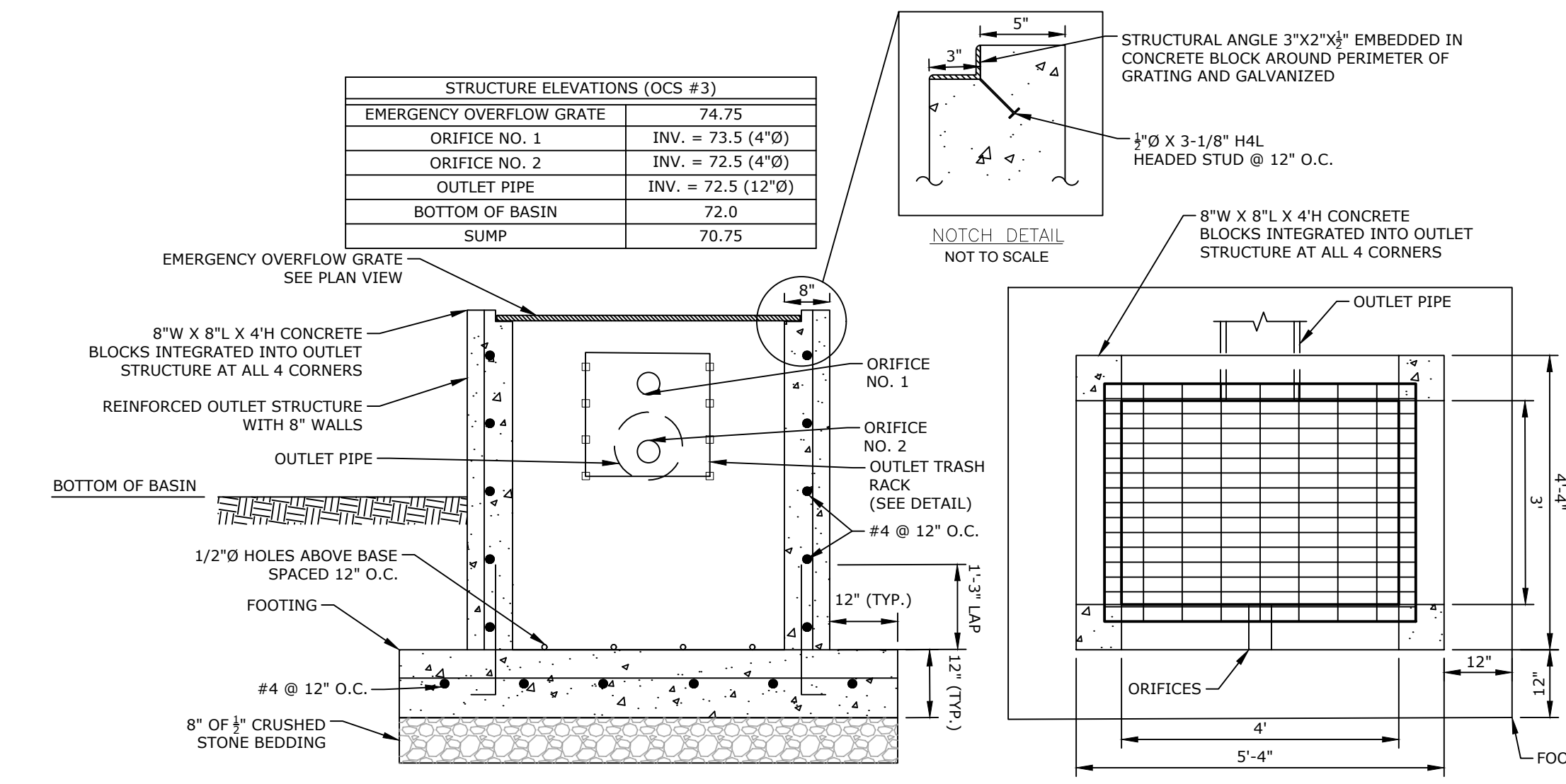
NOTE: 5' OR 6' DIA. PRECAST BASES MAY BE USED WHEN REQUIRED DUE TO SIZE OR NUMBER OF PIPES AT THE MANHOLE. PRECAST REDUCERS WILL BE PLACED ABOVE THE 5' AND 6' BASES. WALL THICKNESS TO INCREASE 1" FOR EACH 1" OF INSIDE DIAMETER INCREASE.



**SECTION A-A**  
**TYPE 'C-L' CATCH BASIN DOUBLE GRATE - TYPE II**  
NOT TO SCALE



**SECTION A-A: BIORETENTION BASIN**  
SCALE: 1"=10'



**BIORETENTION BASIN OUTLET STRUCTURE (OCS #3)**  
NOT TO SCALE

STAMP

NO.	DATE	DESCRIPTION OF REVISION
1	11/15/2021	REV.

**Loureiro**  
 Engineering & Construction  
 15 Jerome Avenue, 82 Jerome Road and 232 Route 22, Uncasville - Montville, CT  
 Phone: 860-448-0494 Fax: 860-448-0499  
 An Employee Owned Company • www.loureiro.com  
 © Loureiro, Inc. All Rights Reserved 2020

SCALE: NOT TO SCALE

DATE	DATE
3/11/2021	3/11/2021

DRAWN BY: BJM APPROVED BY: PB

**DETAILS**

**VILLAGE APARTMENTS - PHASE III**  
 15 JEROME AVENUE, 82 JEROME ROAD AND 232 ROUTE 22, UNCASVILLE - MONTVILLE, CT

**VILLAGE APARTMENTS LLC AND CONNECTICUT MULTIFAMILY EQUITIES II, LLC**  
 1099 NORTH STREET, WHITE PLAINS, NY

DRAWING  
**19000079.12**

SHEET NO. 11 NO. OF SHEETS 13