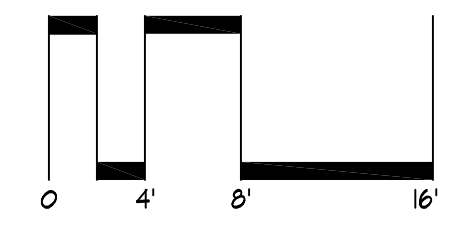
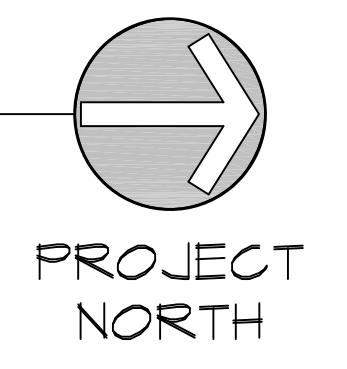




BUILDING A
 LOWER LEVEL FLOOR PLAN (14,153 SQ. FT.)
 1/8"=1'-0"

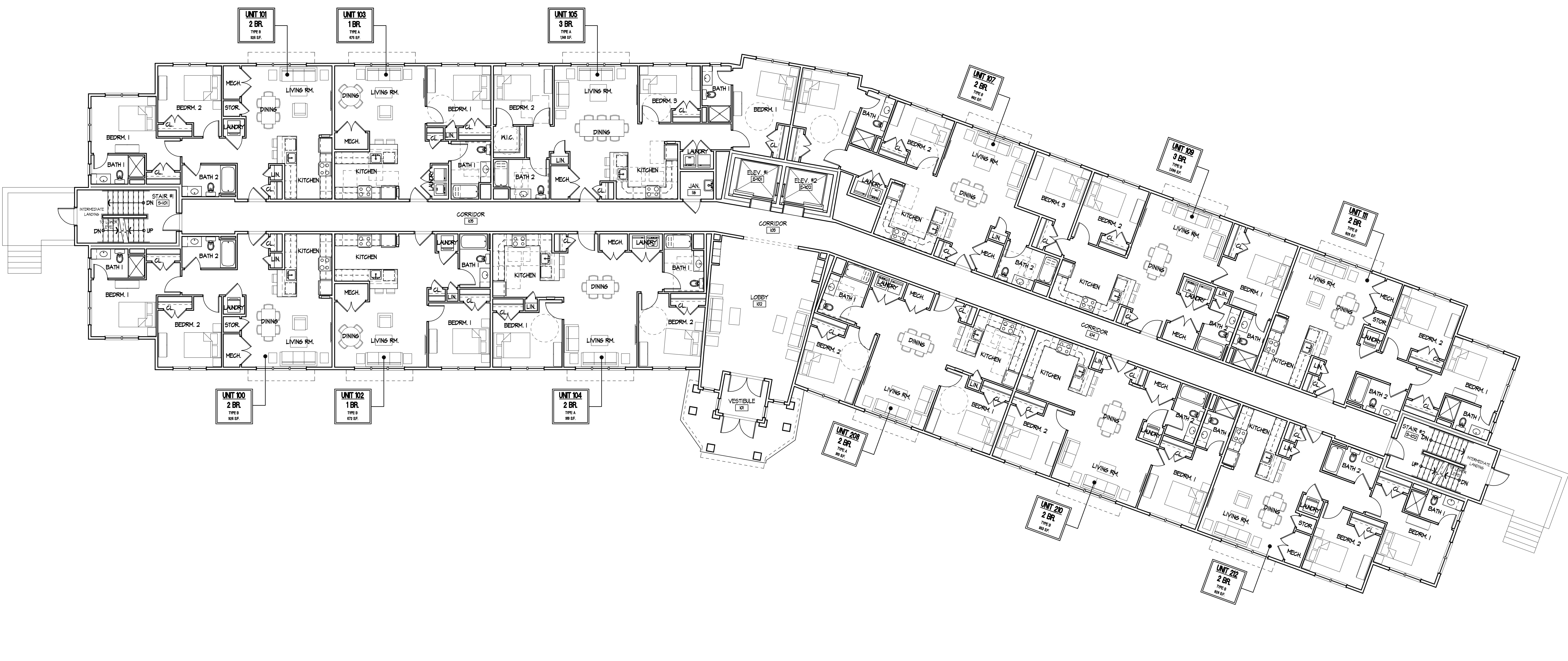


VILLAGE APARTMENTS EXPANSION

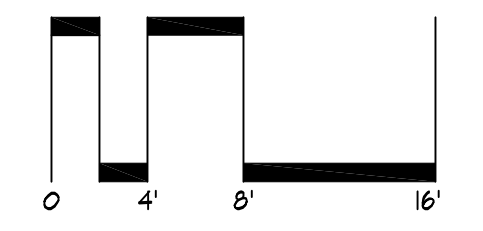
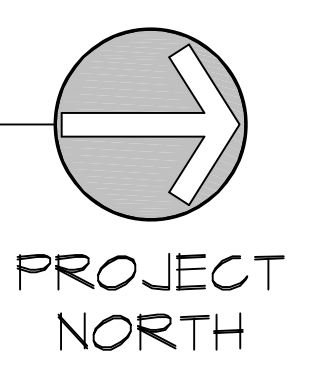
JEROME AVENUE
 UNCASVILLE, CONNECTICUT
 ZONING SUBMISSION
 DATE: 01 / 12 / 2022

PAUL B. BAILEY
 • ARCHITECT •

A-1
 A



BUILDING A
 FIRST FLOOR PLAN (14,153 SQ. FT.)
 1/8"=1'-0"

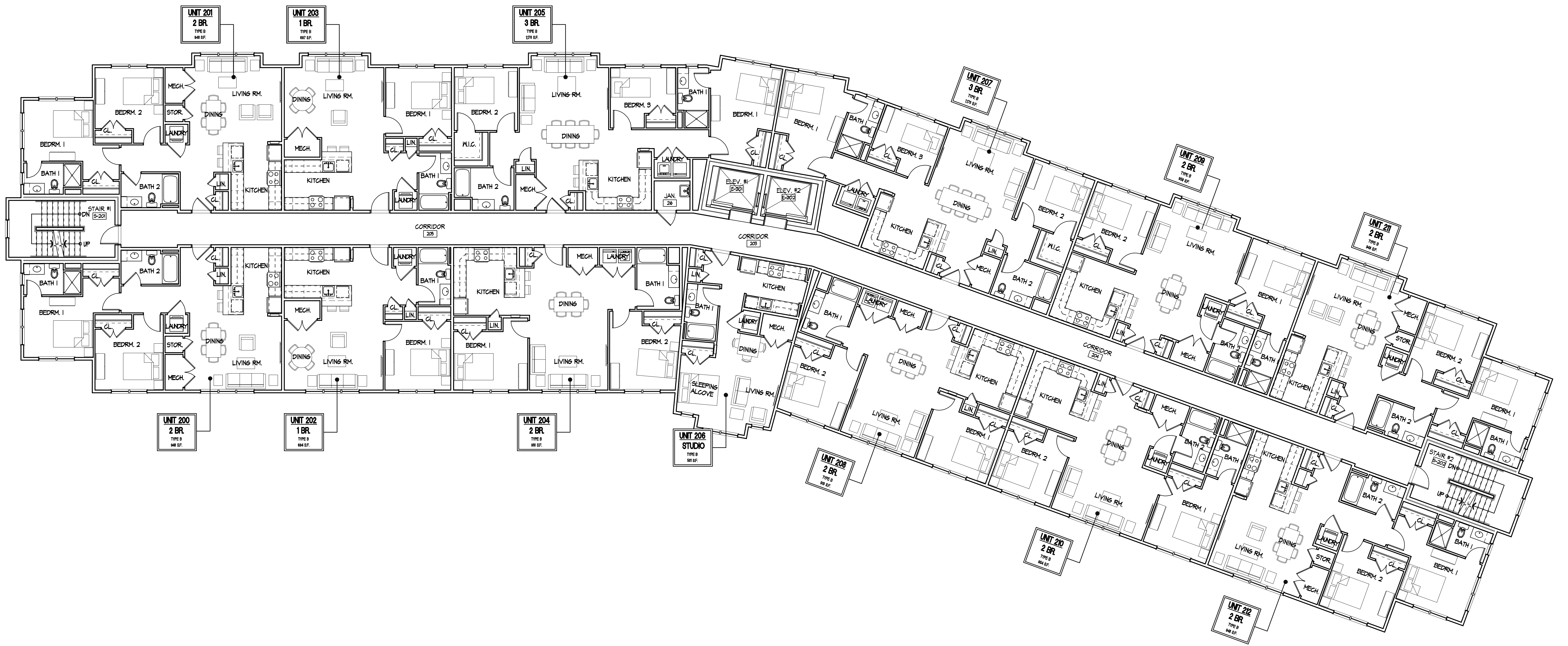


VILLAGE APARTMENTS EXPANSION

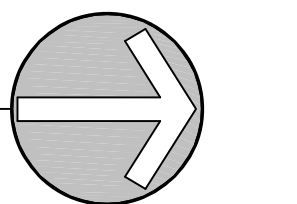
JEROME AVENUE
 UNCASVILLE, CONNECTICUT
 ZONING SUBMISSION
 DATE: 01 / 12 / 2022

PAUL B. BAILEY
 • ARCHITECT •

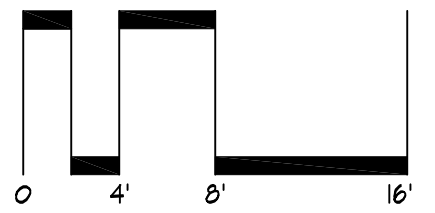
A-2
 A



BUILDING A
 SECOND FLOOR PLAN (14,405 SQ. FT.)
 1/8"=1'-0"



PROJECT NORTH



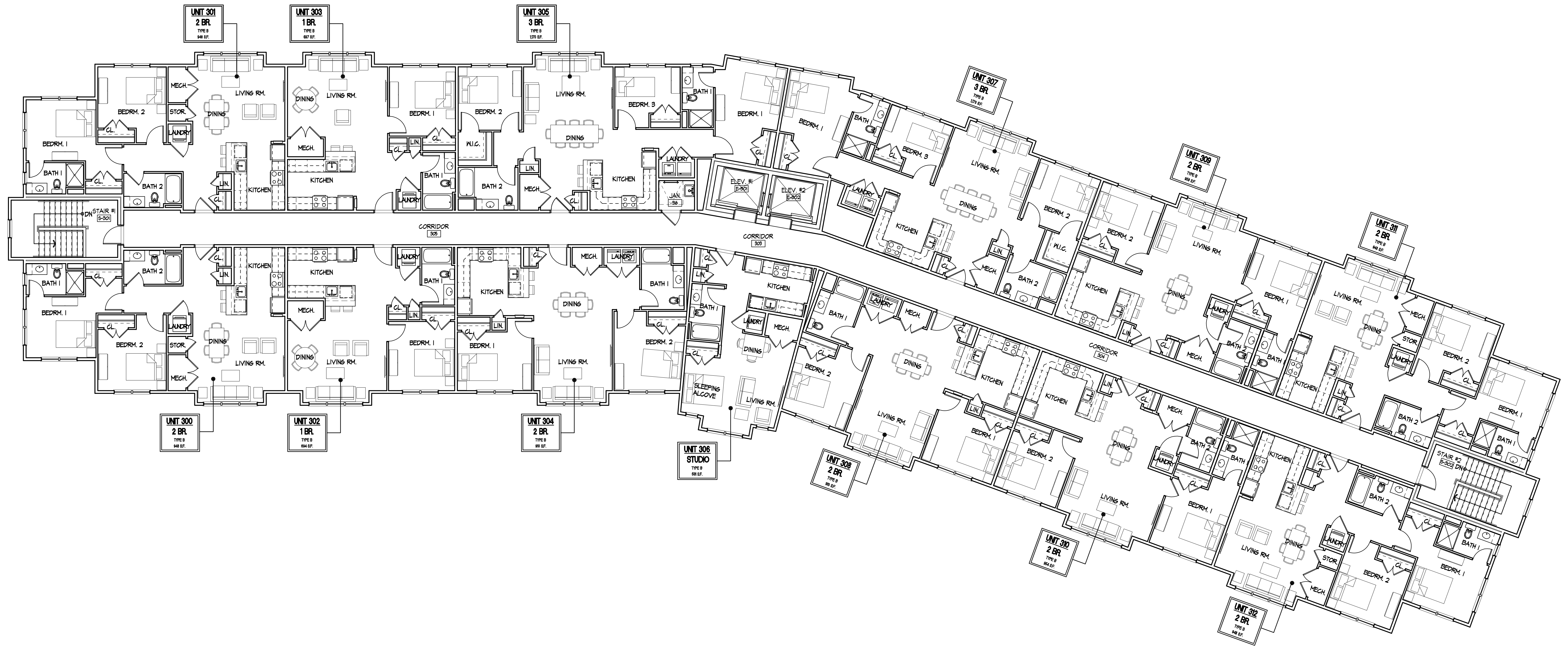
VILLAGE APARTMENTS EXPANSION

JEROME AVENUE
 UNCASVILLE, CONNECTICUT

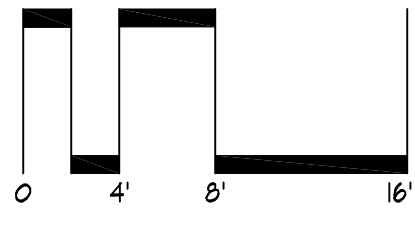
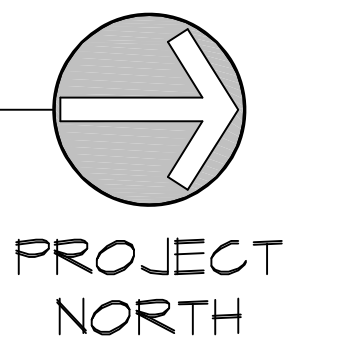
ZONING SUBMISSION
 DATE: 01 / 12 / 2022

PAUL B. BAILEY
 ARCHITECT

A-3
 A




 BUILDING A
 THIRD FLOOR PLAN (14,405 SQ. FT.)
 1/8"=1'-0"



VILLAGE APARTMENTS EXPANSION

JEROME AVENUE
 UNCASVILLE, CONNECTICUT
 ZONING SUBMISSION
 DATE: 01/12/2022

PAUL B. BAILEY
 ARCHITECT

A-4
 A



BUILDING A
EAST ELEVATION
3/32"=1'-0"

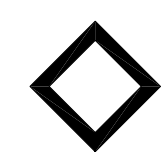
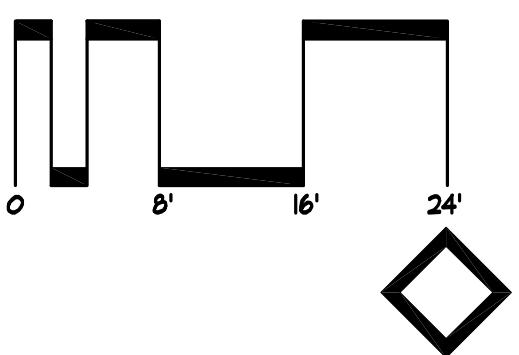


BUILDING A
WEST ELEVATION
3/32"=1'-0"

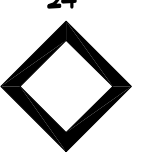
ELEVATION NOTES			
1	METAL GAP FLASHING	10	WINDOWS PER PROJECT SPECIFICATIONS
2	COMPOSITE TRIM DETAILS	11	METAL RAILING PER PROJECT SPECIFICATIONS
3	COMPOSITE PANEL		
4	5/4x10 COMPOSITE CORNER BOARDS		
5	VINYL SIDING 5' TO WEATHER		
6	VINYL SIDING 0' TO WEATHER		
7	VINYL SHINGLE SIDING		
8	5/4x8 COMPOSITE TRANSITION BOARD		
9	5/4x6 COMPOSITE TRIM BOARD		

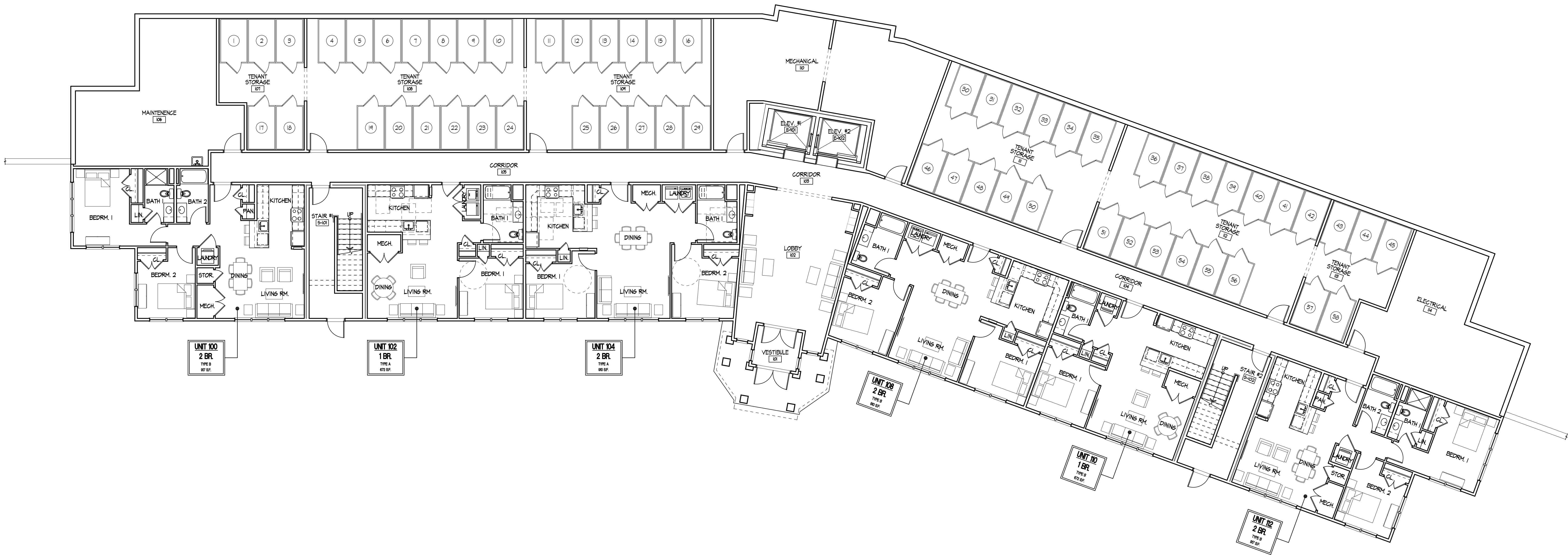


BUILDING A
TYPICAL NORTH & SOUTH ELEVATION
3/32"=1'-0"



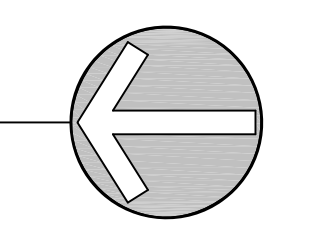
VILLAGE APARTMENTS EXPANSION



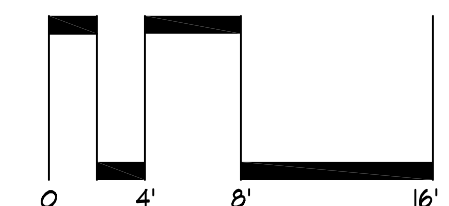


BUILDING B
FIRST FLOOR PLAN (14,159 SQ. FT.)

1/8"=1'-0"



PROJECT NORTH



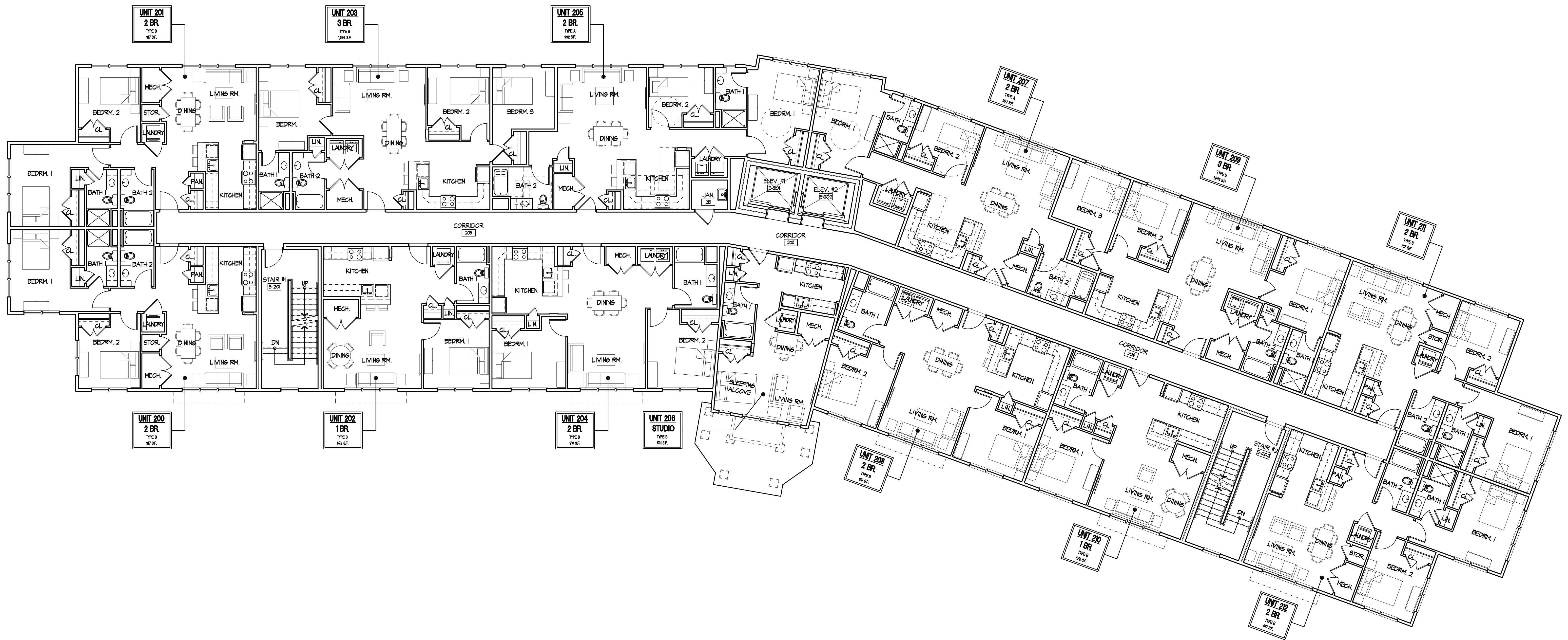
VILLAGE APARTMENTS EXPANSION

JEROME AVENUE
UNCASVILLE, CONNECTICUT

ZONING SUBMISSION
DATE: 01 / 12 / 2022

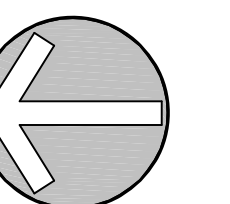
PAUL B. BAILEY
• ARCHITECT •

A-6
B

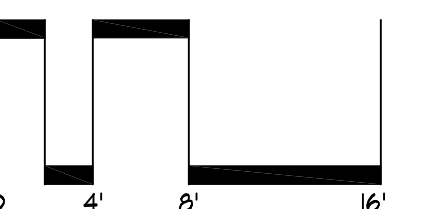


BUILDING B
SECOND FLOOR PLAN (14,123 SQ. FT.)

1/8"=1'-0"



PROJECT
NORTH



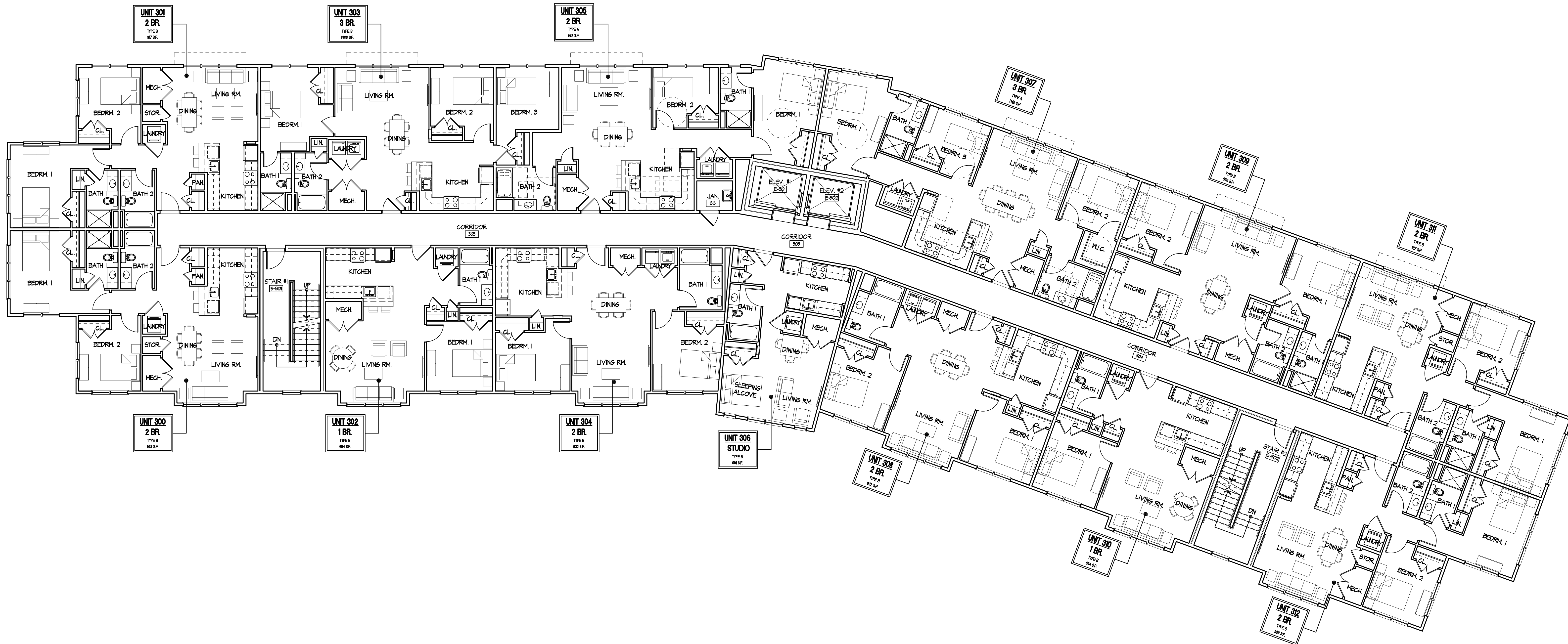
VILLAGE APARTMENTS EXPANSION

JEROME AVENUE
UNCASVILLE, CONNECTICUT

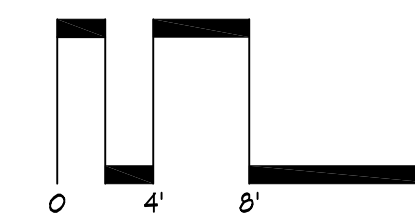
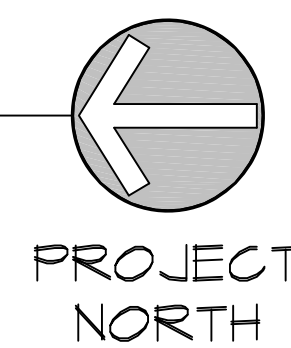
ZONING SUBMISSION
DATE: 01/12/2022

PAUL B. BAILEY
• ARCHITECT •

A-7
B



BUILDING B
 THIRD FLOOR PLAN (14,267 SQ. FT.)
 1/8"=1'-0"

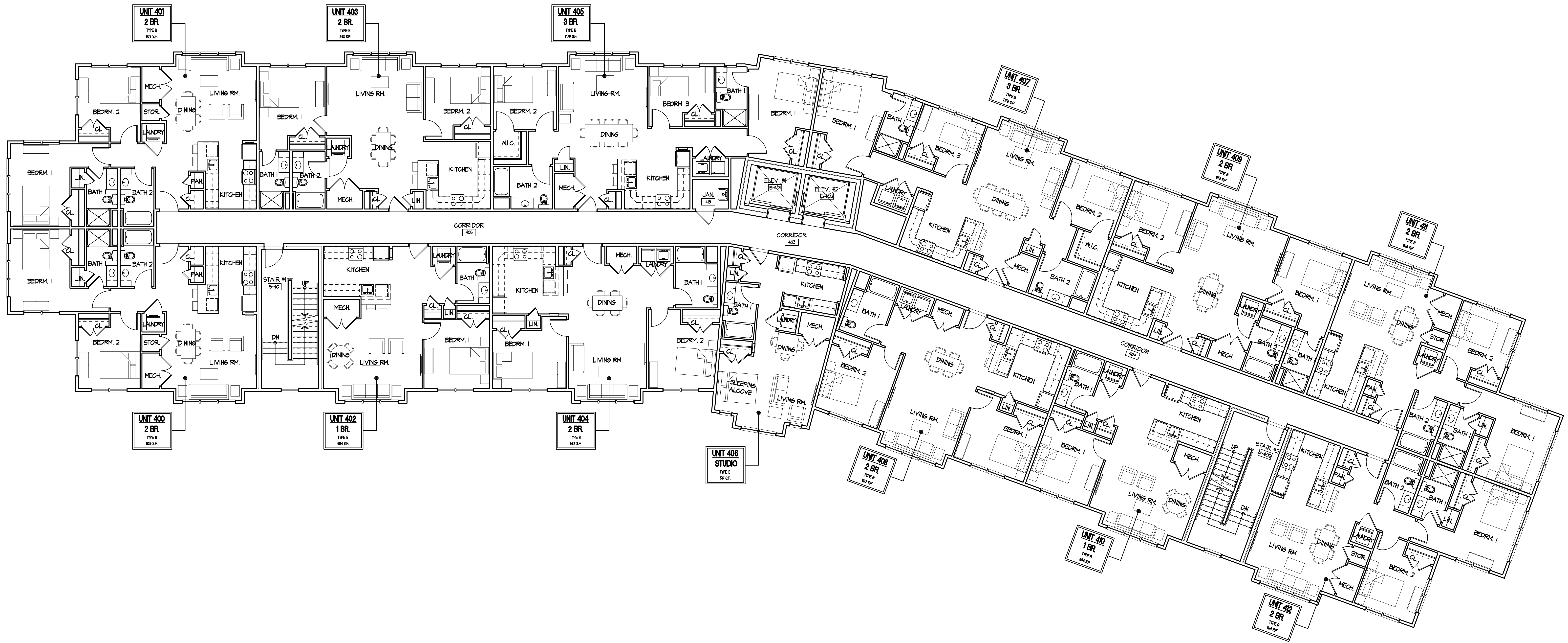


VILLAGE APARTMENTS EXPANSION

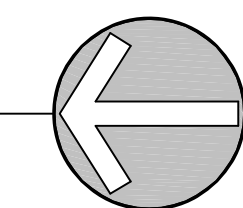
JEROME AVENUE
 UNCASVILLE, CONNECTICUT
 ZONING SUBMISSION
 DATE: 01 / 12 / 2022



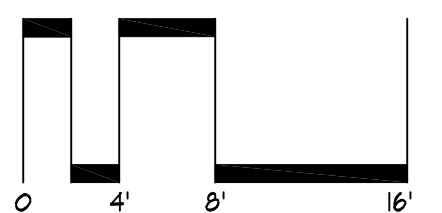
A-8
 B



BUILDING B
 FOURTH FLOOR PLAN (14,429 SQ. FT.)
 1/8"=1'-0"



PROJECT
 NORTH



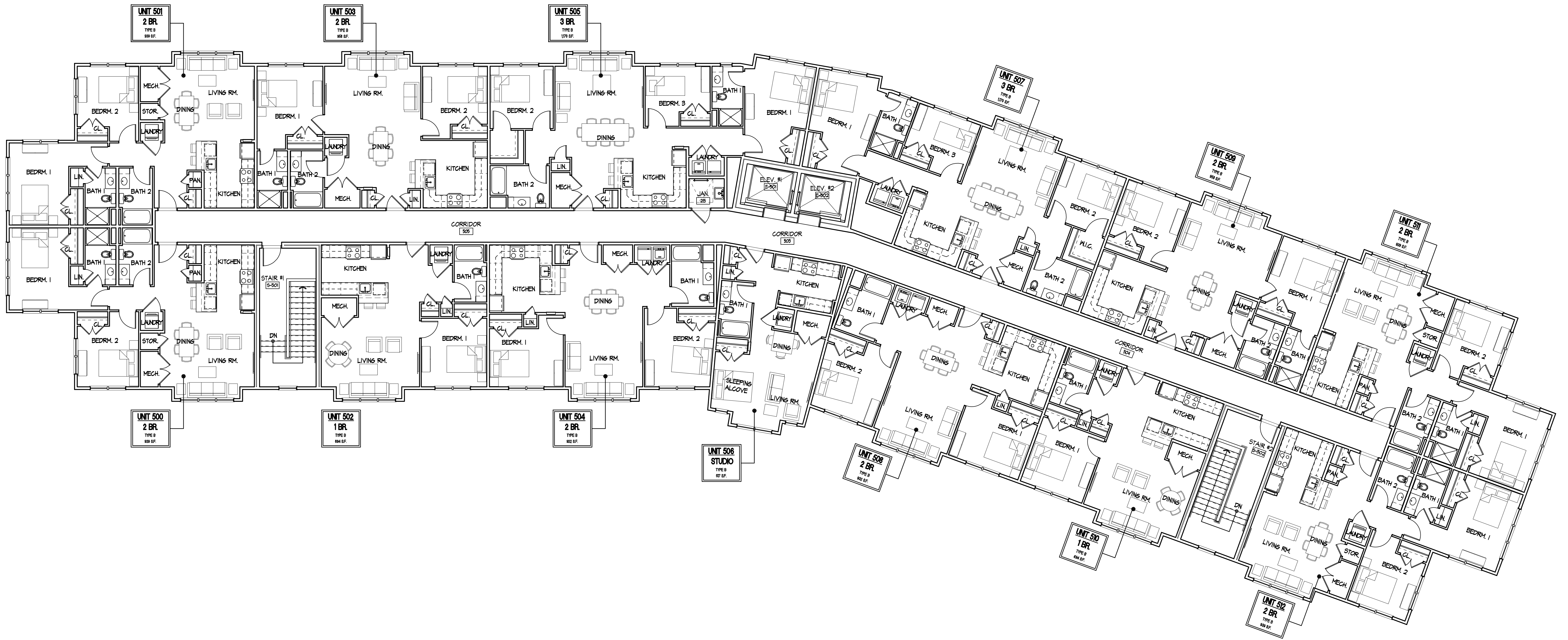
VILLAGE APARTMENTS EXPANSION

JEROME AVENUE
 UNCASVILLE, CONNECTICUT

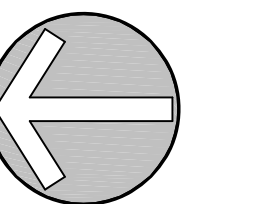
ZONING SUBMISSION
 DATE: 01 / 12 / 2022

PAUL B. BAILEY
 • ARCHITECT •

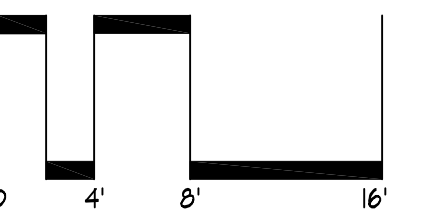
A-9
 B



BUILDING B
 FIFTH FLOOR PLAN (14,429 SQ. FT.)
 1/8"=1'-0"



PROJECT
 NORTH



VILLAGE APARTMENTS EXPANSION

JEROME AVENUE
 UNCASVILLE, CONNECTICUT

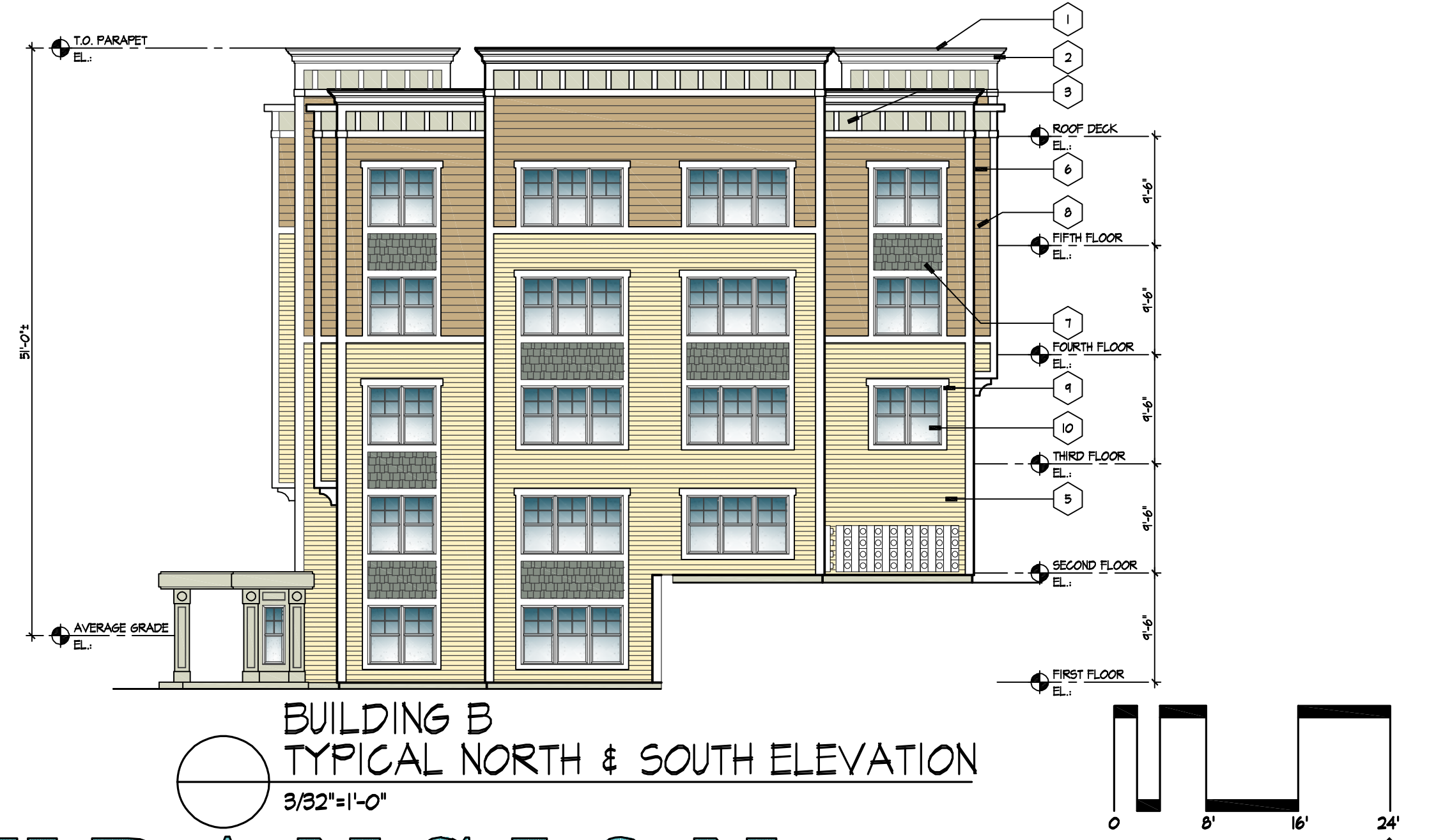
ZONING SUBMISSION
 DATE: 01 / 12 / 2022

PAUL B. BAILEY
 ARCHITECT

A-10
 B



ELEVATION NOTES			
1	METAL CAP FLASHING	10	WINDOWS PER PROJECT SPECIFICATIONS
2	COMPOSITE TRIM DETAILS	11	METAL RAILING PER PROJECT SPECIFICATIONS
3	COMPOSITE PANEL		
4	5/4x10 COMPOSITE CORNER BOARDS		
5	VINYL SIDING 5" TO WEATHER		
6	VINYL SIDING 8" TO WEATHER		
7	VINYL SHINGLE SIDING		
8	5/4x8 COMPOSITE TRANSITION BOARD		
9	5/4x6 COMPOSITE TRIM BOARD		



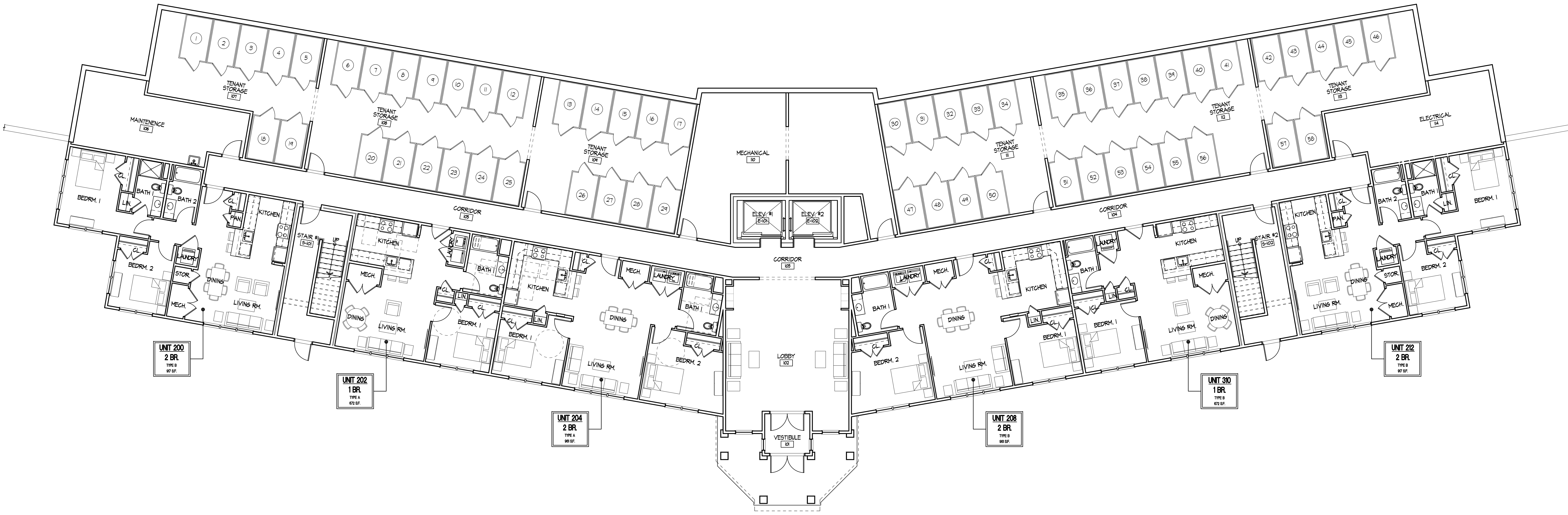
VILLAGE APARTMENTS EXPANSION

JEROME AVENUE
 UNCASVILLE, CONNECTICUT

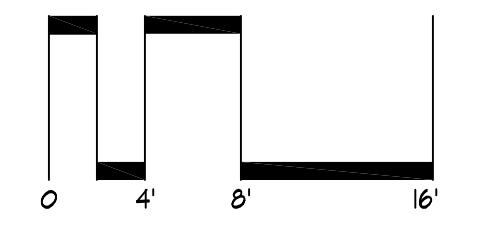
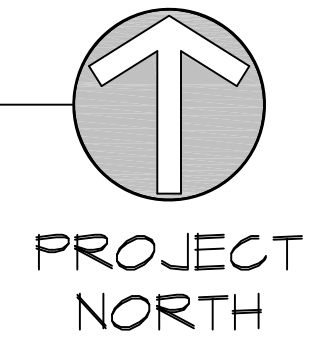
ZONING SUBMISSION
 DATE: 01 / 12 / 2022



A-11
 B



BUILDING C
 FIRST FLOOR PLAN (13,992 SQ. FT.)
 1/8"=1'-0"



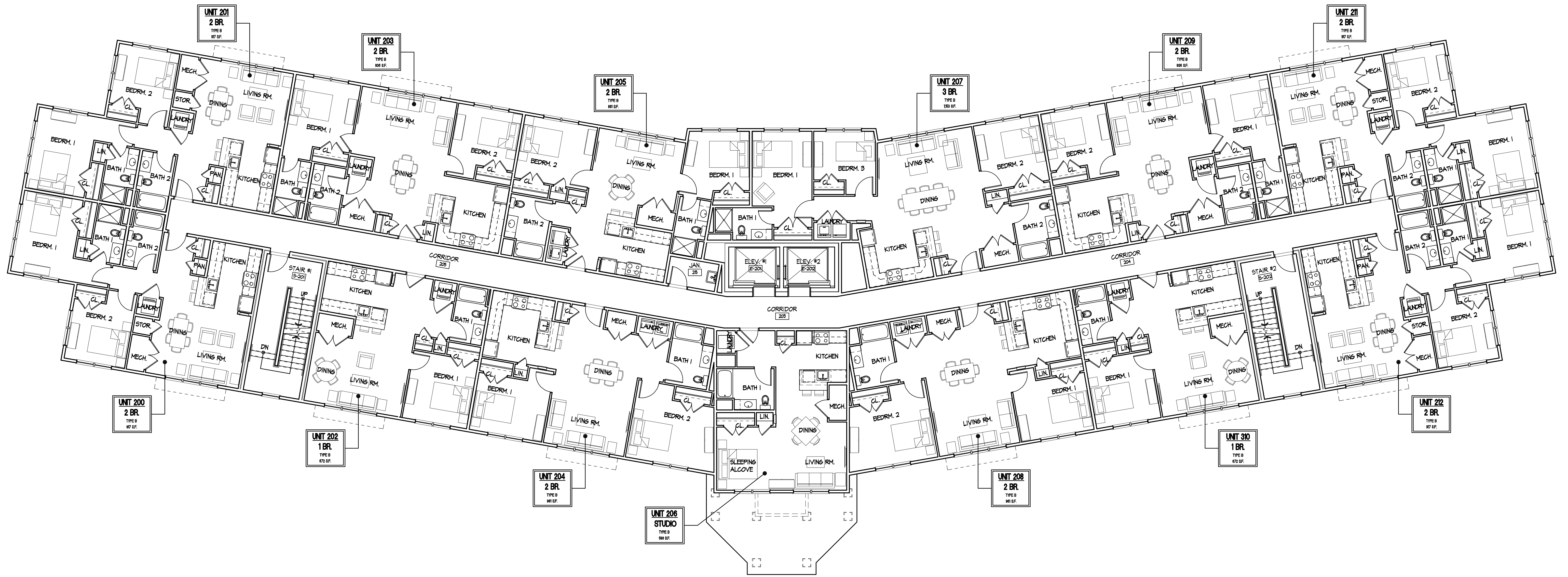
VILLAGE APARTMENTS EXPANSION

JEROME AVENUE
 UNCASVILLE, CONNECTICUT

ZONING SUBMISSION
 DATE: 01 / 12 / 2022

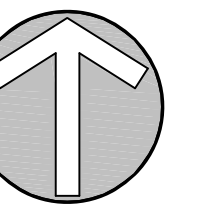
PAUL B. BAILEY
 ARCHITECT

A-12
 C

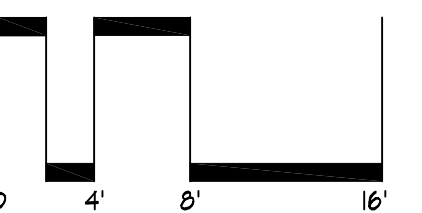


BUILDING C
SECOND FLOOR PLAN (13,992 SQ. FT.)

1/8"=1'-0"



PROJECT
NORTH



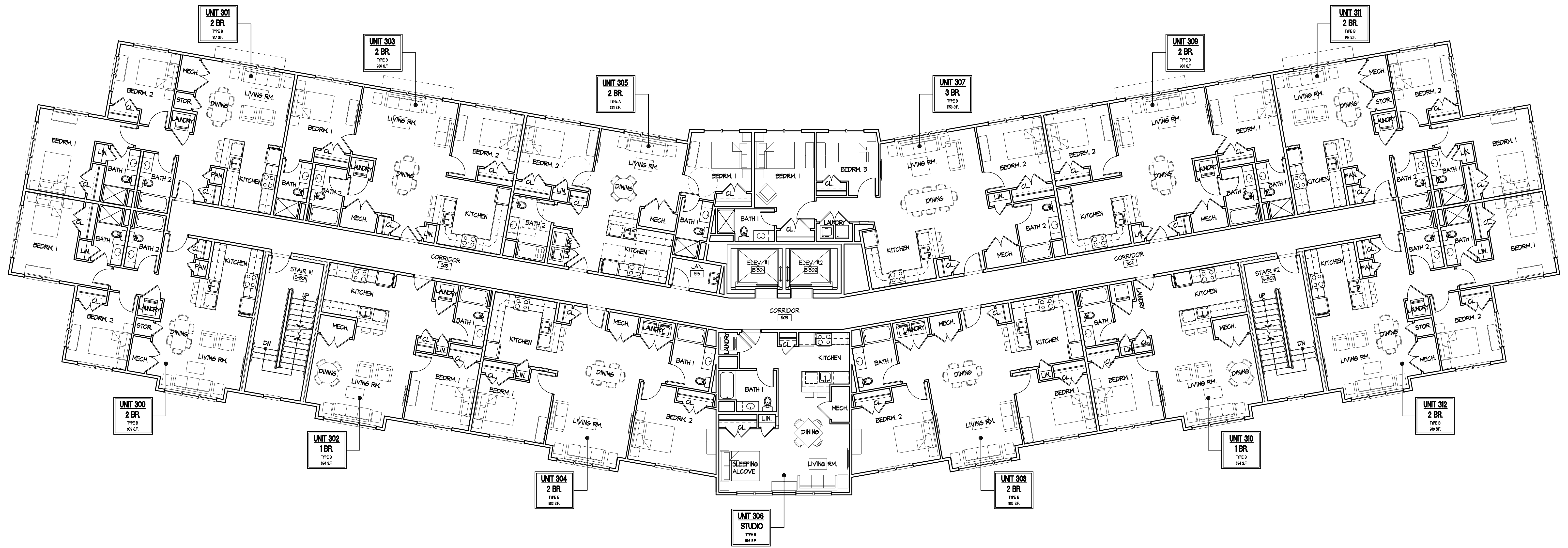
VILLAGE APARTMENTS EXPANSION

JEROME AVENUE
UNCASVILLE, CONNECTICUT

ZONING SUBMISSION
DATE: 01 / 12 / 2022

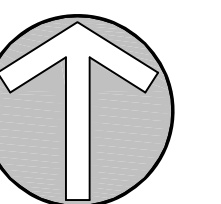
PAUL B. BAILEY
• ARCHITECT •

A-13
C

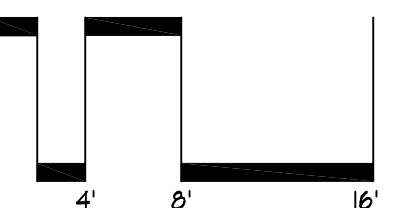


BUILDING C
THIRD FLOOR PLAN (14,136 SQ. FT.)

1/8"=1'-0"



PROJECT
NORTH



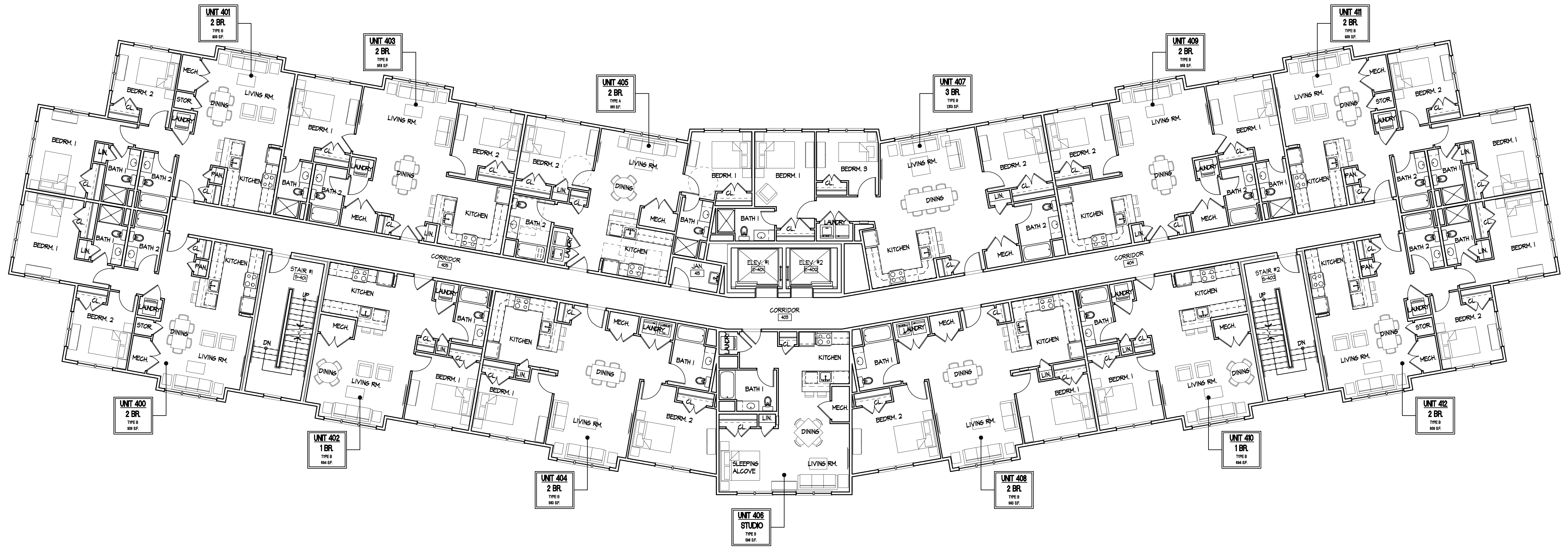
VILLAGE APARTMENTS EXPANSION

JEROME AVENUE
UNCASVILLE, CONNECTICUT

ZONING SUBMISSION
DATE: 01 / 12 / 2022

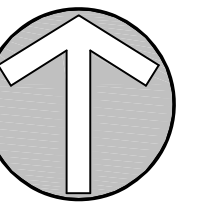
PAUL B. BAILEY
• ARCHITECT •

A-14
C

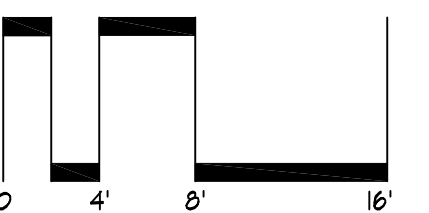


BUILDING C
FOURTH FLOOR PLAN (14,232 SQ. FT.)

1/8"=1'-0"



PROJECT
NORTH



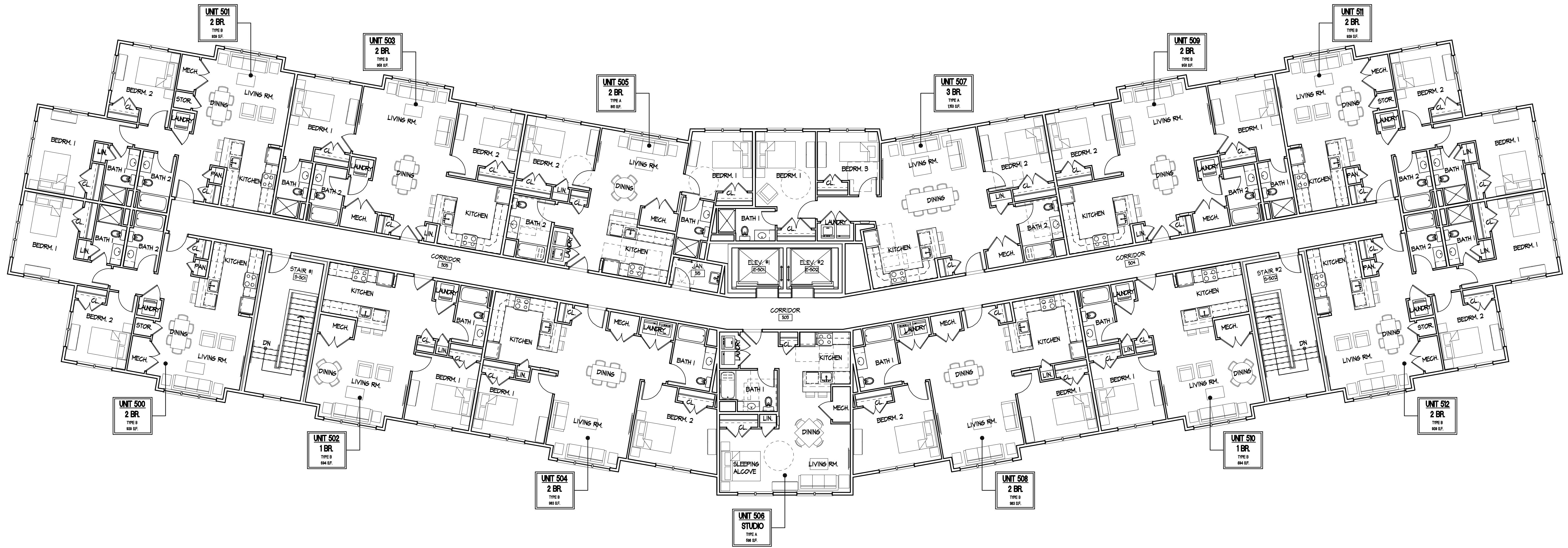
VILLAGE APARTMENTS EXPANSION

JEROME AVENUE
UNCASVILLE, CONNECTICUT

ZONING SUBMISSION
DATE: 01 / 12 / 2022

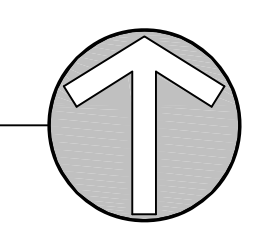
PAUL B. BAILEY
• ARCHITECT •

A-15
C

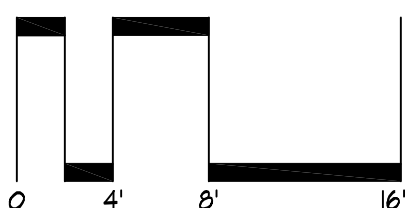


BUILDING C
FIFTH FLOOR PLAN (14,232 SQ. FT.)

1/8"=1'-0"



PROJECT
NORTH



VILLAGE APARTMENTS EXPANSION

JEROME AVENUE
UNCASVILLE, CONNECTICUT

ZONING SUBMISSION
DATE: 01/12/2022

PAUL B. BAILEY
• ARCHITECT •

A-16
C



BUILDING C
SOUTH ELEVATION
3/32"=1'-0"



BUILDING C
NORTH ELEVATION
3/32"=1'-0"

ELEVATION NOTES			
1	METAL CAP FLASHING	10	WINDOWS PER PROJECT SPECIFICATIONS
2	COMPOSITE TRIM DETAILS	11	METAL RAILINGS PER PROJECT SPECIFICATIONS
3	COMPOSITE PANEL		
4	5/4x10 COMPOSITE CORNER BOARDS		
5	VINYL SIDING 5" TO WEATHER		
6	VINYL SIDING 8" TO WEATHER		
7	VINYL SHINGLE SIDING		
8	5/4x8 COMPOSITE TRANSITION BOARD		
9	5/4x6 COMPOSITE TRIM BOARD		



BUILDING C
TYPICAL EAST & WEST ELEVATION
3/32"=1'-0"

VILLAGE APARTMENTS EXPANSION

JEROME AVENUE
UNCASVILLE, CONNECTICUT
ZONING SUBMISSION
DATE: 01 / 12 / 2022

UNIT MATRIX

Bldg A

Floor	Studio	A	B	1BR / 1Ba	A	B	2BR / 1Ba	A	B	2BR / 2Ba	A	B	3BR / 2Ba	A	B	Total
LL	-	-	-	1	-	1	-	-	-	3	1	2	2	1	1	6
1	-	-	-	2	1	1	2	2	-	6	1	5	2	1	1	12
2	1	-	1	2	-	2	2	-	2	6	-	6	2	-	2	13
3	1	-	1	2	-	2	2	-	2	6	-	6	2	-	2	13
Total	2	-	2	7	1	6	6	2	4	21	2	19	8	2	6	44

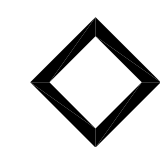
Bldg B

Floor	Studio	A	B	1BR / 1Ba	A	B	2BR / 1Ba	A	B	2BR / 2Ba	A	B	3BR / 2Ba	A	B	Total
1	-	-	-	2	1	1	2	1	1	2	-	2	-	-	-	6
2	1	-	1	2	-	2	2	-	2	6	2	4	2	-	2	13
3	1	-	1	2	-	2	2	-	2	6	1	5	2	1	1	13
4	1	-	1	2	-	2	2	-	2	6	-	6	2	-	2	13
5	1	-	1	2	-	2	2	-	2	6	-	6	2	-	2	13
Total	4	-	4	10	1	9	10	1	9	26	3	23	8	1	7	58

Bldg C

Floor	Studio	A	B	1BR / 1Ba	A	B	2BR / 1Ba	A	B	2BR / 2Ba	A	B	3BR / 2Ba	A	B	Total
1	-	-	-	2	1	1	2	1	1	2	-	2	-	-	-	6
2	1	-	1	2	-	2	2	-	2	7	-	7	1	-	1	13
3	1	-	1	2	-	2	2	-	2	7	1	6	1	-	1	13
4	1	-	1	2	-	2	2	-	2	7	1	6	1	-	1	13
5	1	1	-	2	-	1	2	-	2	7	1	6	1	1	-	13
Total	4	1	3	10	1	8	10	1	9	30	3	27	4	1	3	58

Total	10	1	9	27	3	23	26	4	22	77	8	69	20	4	16	160
Percentage	6.25%			16.88%			16.25%			48.13%			12.50%	20	140	



VILLAGE APARTMENTS EXPANSION

