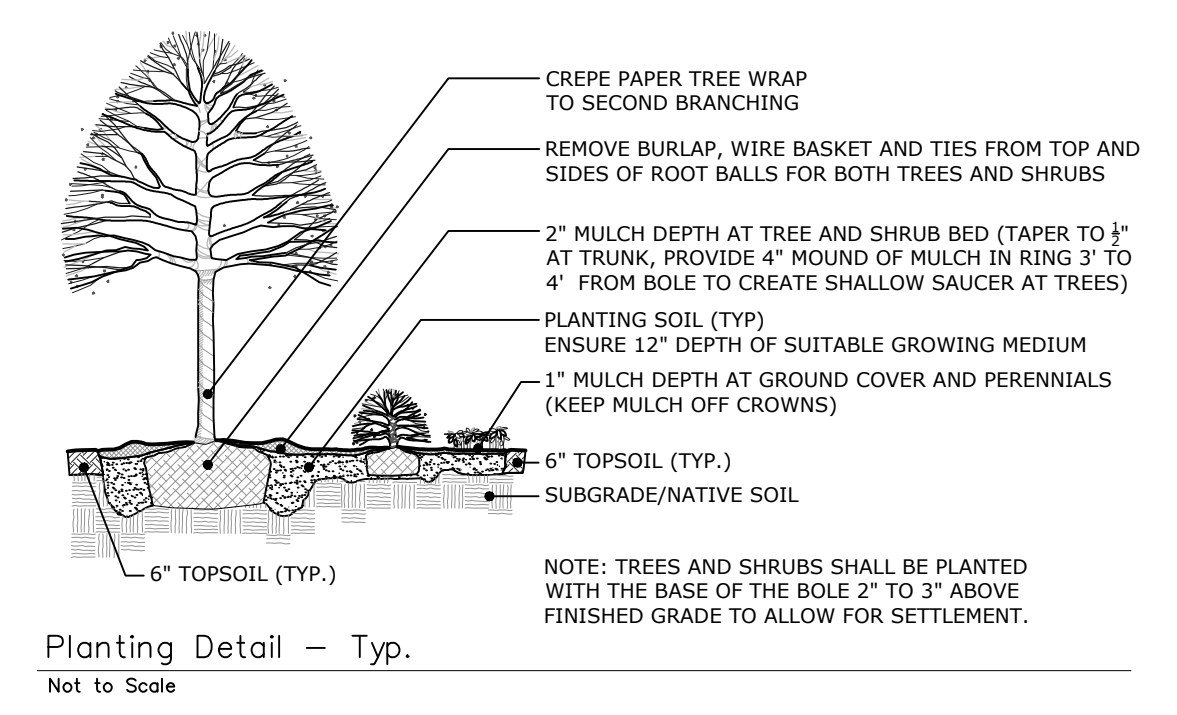




- GENERAL NOTES PLANTING:**
1. THE CONTRACTOR IS RESPONSIBLE FOR NOTIFYING OWNER REPRESENTATIVE OF ANY AND ALL CONCERNS REGARDING PLANT HEALTH RELATIVE TO SITE CONDITIONS. NOTIFY THE OWNER REPRESENTATIVE SHOULD UNSATISFACTORY BORROW OR NATIVE SOIL CONDITIONS BE OBSERVED.
  2. AS CONSTRUCTION PROCEEDS, FINE GRADE AND INSTALL SURFACING MATERIAL AS SOON AS POSSIBLE TO REDUCE EROSION.
  3. ALL DISTURBED AREAS NOT COVERED BY BUILDING, PAVING, PLANTING BEDS OR OTHER IMPROVEMENTS SHALL BE GRADED, TOPSOILED TO A DEPTH OF 6" AND SEEDED.
  4. PLANT BEDS SHALL BE FURNISHED WITH NON-COMPACTED PLANTING SOIL TO A DEPTH OF 12" TO MEET FINISHED GRADES AS INDICATED ON GRADING PLAN. INSTALL PLANT MATERIAL AND MULCH IN A TIMELY MANNER.
  5. IN ALL PLANT BEDS, PROVIDE PINE BARK MULCH AS DETAILED. ESTABLISH A NEAT, SMOOTH EDGE BETWEEN MULCH AND LAWN.
  6. ADJUSTMENTS IN THE LOCATIONS OF PLANT MATERIALS MAY BE NECESSARY DUE TO LOCATIONS OF UTILITIES. ADJUSTMENTS SHALL BE APPROVED BY THE OWNER'S REPRESENTATIVE PRIOR TO INSTALLATION.
  7. PROVIDE AND INSTALL ALL PLANTS SHOWN ON THE PLANTING PLAN DRAWINGS. THE QUANTITIES IN THE PLANT LIST ARE PROVIDED FOR THE CONTRACTOR'S CONVENIENCE ONLY. IF DISCREPANCIES OCCUR, THE DRAWING SYMBOLS PREVAIL OVER THE PLANT LIST QUANTITIES.
  8. SEE SITE PHOTOMETRIC PLAN (19000079.15) FOR PLANTINGS/LIGHTS LOCATION, LUMINAIRE SCHEDULE, CALCULATION SUMMARY, POLE INFORMATION AND LUMINAIRE/POLE IMAGES.



**PLANT LIST**

CODE	QTY	BOTANICAL NAME	COMMON NAME	SIZE	ROOT / COMMENT
<b>DECIDUOUS TREES:</b>					
AC	12	AMELANCHIER CANADENSIS	SERVICEBERRY	10' HT MIN	
AS	2	ACER SACCHARUM	SUGAR MAPLE	2.5' CAL	
AR	6	ACER RUBRUM	RED MAPLE	2' CAL	
BND	7	BETULA NIGRA 'DURA HEAT'	DURA HEAT BIRCH	10' HT MIN	
CF	4	CORNUS FLORIDA 'CLOUD NINE'	CLOUD NINE FLOWERING DOGWOOD	1.5' CAL	
CK	3	CLADRASTIS KENTUCKEA	AMERICAN YELLOWWOOD	2' CAL	
CO	1	CARYA OVATA	SHAGBARK HICKORY	2' CAL	
COK	3	CORNUS KOUSA	KOUSA DOGWOOD	1.5' CAL	
GT	7	GLEDITSIA TRICANTHOS STREETKEEPER	STREETKEEPER HONEYLOCUST	2' CAL	
MS	1	MAGNOLIA SOULANGIANA	MAGNOLIA SOULANGIANA	12' HT MIN	B&B
MV	2	MAGNOLIA VIRGINIANA	SWEET BAY MAGNOLIA	12' HT MIN	
NS	6	NYSSA SYLVATICA	BLACK TUPELO	2' CAL	
OA	2	OXYSPERDON ARBOREUM	SOURWOOD	1.5' CAL	
PO	4	PLATANUS OCCIDENTALIS	AMERICAN SYCAMORE	2' CAL	
TA	1	TILIA AMERICANA	AMERICAN LINDEN	2' CAL	
TC	7	TILIA CORDATA	LITTLE LEAF LINDEN	2' CAL	
UAP	4	ULMUS AMERICANA 'PRINCETON'	PRINCETON ELM	2' CAL	
PC	4	PRUNUS CERASIFERA	PURPLE LEAF PLUM	1.5' CAL	
QP	3	QUERCUS PALUSTRIS	PIN OAK	2' CAL	
QR	2	QUERCUS RUBRA	NORTHERN RED OAK	2' CAL	
<b>EVERGREEN TREES:</b>					
ABC	12	ABIES CONCOLOR	WHITE FIR	10' HT MIN	B&B SINGLE LEADER
ABF	5	ABIES FRASERI	FRASER FIR	8' HT MIN	B&B SINGLE LEADER
IO	7	ILEX OPACA	AMERICAN HOLLY	8' HT MIN	B&B SINGLE LEADER
PA	5	PICEA MARIA	NORWAY SPRUCE	10' HT MIN	B&B SINGLE LEADER
PS	3	PINUS STROBUS	WHITE PINE	10' HT MIN	B&B SINGLE LEADER
SV	1	SCIALOPIYUS VERTICILLATA	JAPANESE UMBRELLA PINE	8' HT MIN	B&B SINGLE LEADER
TaC	14	TSUGA CANADENSIS	EASTERN HEMLOCK	10' HT MIN	B&B SINGLE LEADER
<b>DECIDUOUS SHRUBS:</b>					
ASP	14	ASCULUS PARVIFLORA	BOTTLEBRUSH BUCKEYE	4' HT MIN	B&B
CS	22	CORNUS SERICEA	RED OSIER DOGWOOD	4' HT MIN	B&B
HS	2	HIBISCUS SYRIACUS	ROSE OF SHARON	5' HT MIN	CONT
RC	73	ROSA 'GARNET'	GARNET ROSE	#2	CONT
RM	51	ROSA 'KNOCK OUT'	KNOCK OUT ROSE	#3	CONT
RK	34	RHODO. MAXIMUM	ROSEBAY RHODODENDRON	4' HT MIN	B&B
VBM	3	VIBURNUM X BURKWOODII	MOHAWK VIBURNUM	4' HT MIN	B&B
VJ	5	VIBURNUM X JUDDII	JUDDII VIBURNUM	4' HT MIN	B&B
VTM	4	VIBURNUM P.T. MARIESI	MARIES DOUBLEFILE VIBURNUM	3' HT MIN	B&B
<b>EVERGREEN SHRUBS:</b>					
IM	20	ILEX X MES. 'CHINA GIRL'	CHINA GIRL HOLLY	4' HT MIN	B&B
IG	14	INKBERRY HOLLY	INKBERRY HOLLY	3' HT MIN	B&B
MD	24	MICROBIOTA DECUSSATA	RUSSIAN ARBORVITAE	#5	CONT
MP	8	MYRTICA PENSYLVANICA	NORTHERN BARBERY	3' HT MIN	B&B
JP	16	JUNIPERUS CH. 'BLUE POINT'	BLUE POINT JUNIPER	4' HT MIN	B&B
JHB	46	JUNIPERUS H. 'BLUE CHIP'	BLUE CHIP JUNIPER	#5	CONT
JSW	4	JUNIPERUS S. 'WICHITA BLUE'	WICHITA BLUE JUNIPER	4' HT MIN	B&B
JVG	24	JUNIPERUS V. 'GREY OWL'	GREY OWL JUNIPER	3' HT. MIN.	B&B
RHC	8	RHODO. 'YAK. 'CRETE'	CRETE YAKUSHIMANUM RHODODENDRON	#5	CONT
RHD	40	RHOODODENDRON 'PJM'	MIXED PJM RHODODENDRON	#5	CONT
TOD	43	THUJA O. 'DEGROOT'S SPIRE'	DEGROOT'S SPIRE ARBORVITAE	6' HT MIN	B&B
TON	27	THUJA O. 'NIGRA'	DARK AMERICAN ARBORVITAE	10' HT MIN	B&B
TOS	71	THUJA O. 'SMARAGD'	EMERALD GREEN ARBORVITAE	8' HT MIN	B&B
<b>PERENNIALS:</b>					
MSG	24	MISCANTHUS SINENSIS MIX	MIXED MAIDEN GRASS VARIETIES	#3	CONT
PAN	71	PANICUM VIRGATUM MIX	MIXED SWITCHGRASS VARIETIES	#3	CONT
PEN	50	PENNISETUM ALOPECUROIDES MIX	MIXED FOUNTAIN GRASS VARIETIES	#3	CONT
VMC	465	VINCA MINOR	VINCA GROUNDCOVER	SP4	CONT
<b>PERENNIAL ALLOWANCE:</b>					
TBD	30	ORNAMENTAL GRASSES - MIXED VARIETIES TO BE FIELD LOCATED		#3	CONT

NOTES:  
 PLANTS TO BE APPROVED BY OWNER/OWNER REPRESENTATIVE PRIOR TO PURCHASE & TRANSPORT TO SITE FOR INSTALLATION.

NOTE: SEE SITE PHOTOMETRIC PLAN FOR LUMINAIRE SCHEDULE AND LIGHTING FIXTURE DETAILS.

APPROVED BY THE MONTVILLE INLAND WETLAND COMMISSION ON \_\_\_\_\_ DATE \_\_\_\_\_  
 CHAIRMAN/SECRETARY \_\_\_\_\_ DATE \_\_\_\_\_

APPROVED BY THE MONTVILLE PLANNING AND ZONING COMMISSION ON \_\_\_\_\_ DATE \_\_\_\_\_  
 CHAIRMAN/SECRETARY \_\_\_\_\_ DATE \_\_\_\_\_

**STAMP**

SCALE 1" = 40'

DATE 2/8/21

**010N1S**

**Loureiro**

LANDSCAPE ARCHITECTURE • SITE PLANNING

100 Northwest Drive • Hamden, Connecticut 06502  
 An Employee Owned Company • www.Loureiro.com  
 © Loureiro Architecture, Inc. All Rights Reserved 2021.

**VILLAGE APARTMENTS - PHASE III**

15 JEROME AVENUE, 82 JEROME ROAD AND 232 ROUTE 32, UNCASVILLE - MONTVILLE, CT

**VILLAGE APARTMENTS LLC AND CONNECTICUT MULTIFAMILY EQUITIES II, LLC**

DRAWING 19000079.14

SHEET NO. 8 NO. OF SHEETS 14



JOB NAME: THE VILLAGE, MONTVILLE, CT  
 APEX LIGHTING SOLUTIONS  
 WEATHERLAND/CAD/CAD: # 0000  
 MOUNTING HEIGHT: SEE LUMINAIRE SCHEDULE  
 APPR: LC  
 SCALE: 1"

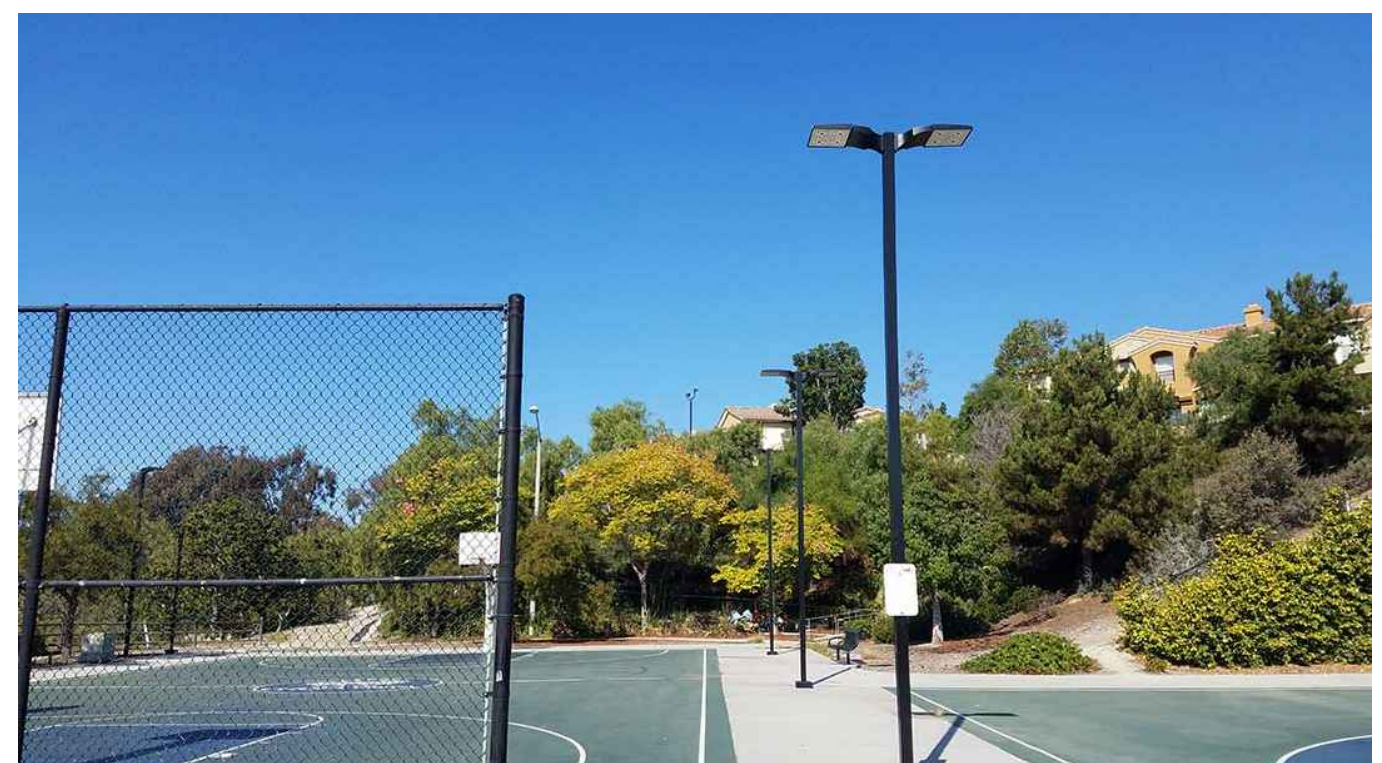
Qty	Label	Arrangement	Lumens	Input Watts	LLF	BOG Rating	Description
2	SL2	SINGLE	11518	86.8	0.850	B2-00-G2	U.S. ARCH RER-PLD-II-40LED-700MA-WN-VOLT-FINISH MOUNTED TO SNTS184-11-1-FINISH # 18FT AFG TO BOF
11	SL2HS	SINGLE	8423	86.8	0.850	B1-00-G2	U.S. ARCH RER-PLD-II-40LED-700MA-WN-VOLT-FINISH-HS-PLD MOUNTED TO SNTS184-11-1-FINISH # 18FT AFG TO BOF
5	SL3	SINGLE	10680	86.8	0.850	B2-00-G3	U.S. ARCH RER-PLD-III-40LED-700MA-WN-VOLT-FINISH MOUNTED TO SNTS184-11-1-FINISH # 18FT AFG TO BOF
3	SL4	SINGLE	10595	86.8	0.850	B2-00-G3	U.S. ARCH RER-PLD-IV-FT-40LED-700MA-WN-VOLT-FINISH MOUNTED TO SNTS184-11-1-FINISH # 18FT AFG TO BOF
17	SL4HS	SINGLE	8318	86.8	0.850	B1-00-G3	U.S. ARCH RER-PLD-IV-FT-40LED-700MA-WN-VOLT-FINISH-HS-PLD MOUNTED TO SNTS184-11-1-FINISH # 18FT AFG TO BOF
1	SL5	SINGLE	11920	86.8	0.850	B4-00-G2	U.S. ARCH RER-PLD-VSQ-M-40LED-700MA-WN-VOLT-FINISH MOUNTED TO SNTS184-11-1-FINISH # 18FT AFG TO BOF
4	SL5D	BACK-BACK	11920	86.8	0.850	B4-00-G2	U.S. ARCH RER-PLD-VSQ-M-40LED-700MA-WN-VOLT-FINISH MOUNTED TO SNTS184-11-2-180-FINISH # 18FT AFG TO BOF

Label	Grid Z	Avg	Max	Min	Avg/Min	Max/Min
SITE	0	0.77	6.0	0.0	N.A.	N.A.
LOWER ENTRWAY		2.02	3.9	0.0	N.A.	N.A.
LOWER PARKING LOTS		1.67	5.9	0.0	N.A.	N.A.
UPPER PARKING LOT		2.01	4.1	0.5	4.02	8.20

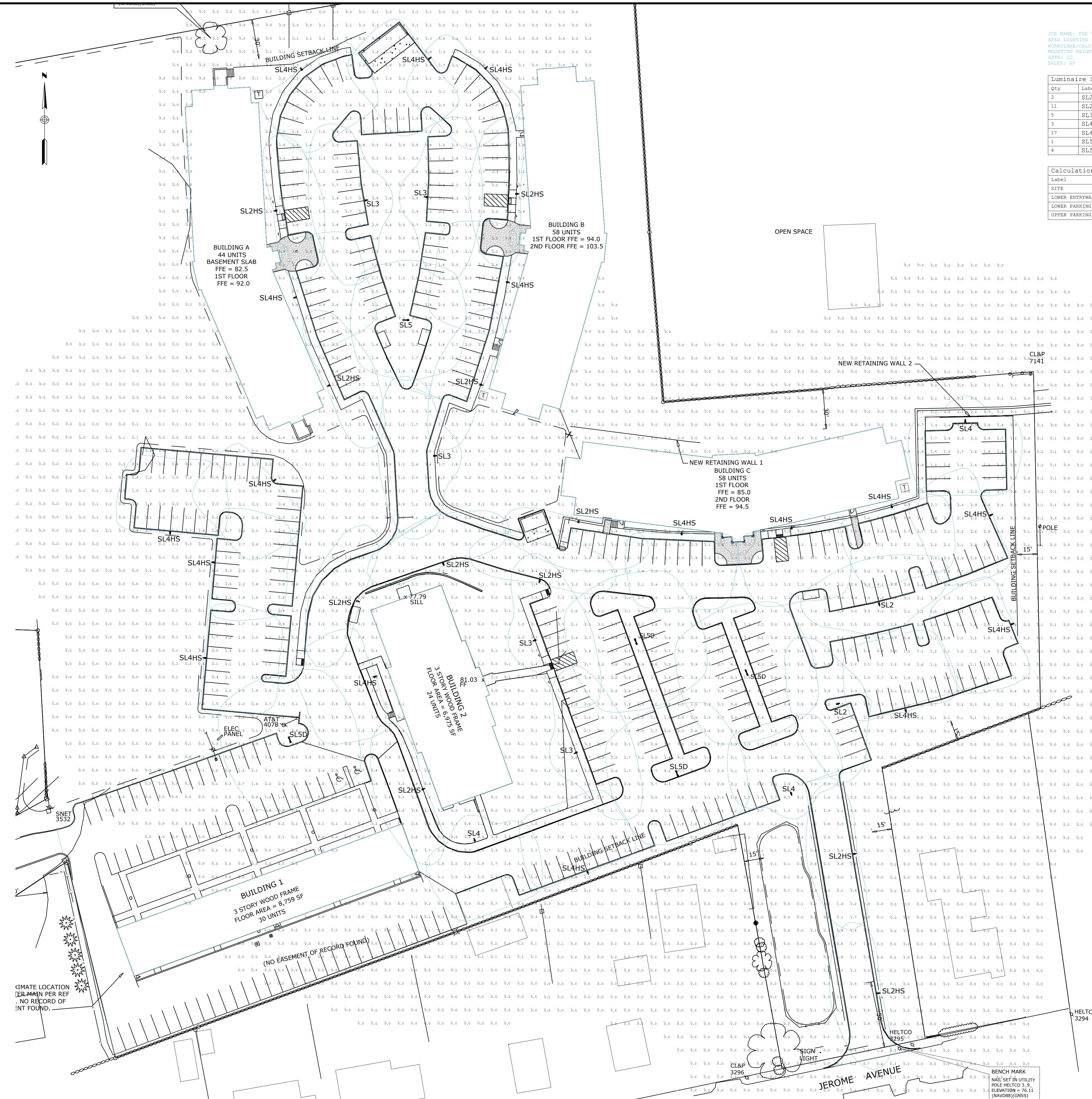
NOTE: SEE SITE PLANTING and LIGHTING PLAN (19000079.14) FOR PLANTING/LIGHTING LOCATIONS.



SINGLE FIXTURE - 18' Ht. SQUARE POLE



DOUBLE FIXTURE - 18' Ht. SQUARE POLE



GENERAL DISCLAIMER:  
 Calculations have been performed according to IES standards and good practice. Calculations are based on assumed values and calculated results may vary due to site conditions, weather, and other factors. The user is responsible for verifying the accuracy of the data and the appropriateness of the calculations. The user is also responsible for ensuring that the lighting system is properly installed and maintained. The user should consult with a qualified professional for more information.

REV.	DATE	DESCRIPTION
REV. X	XX-XX-05	XXXXX

**APEX**  
 LIGHTING SOLUTIONS  
 THE POINT WHERE ALL DESIGN LINES CONVERGE

20-30 BEAVER ROAD  
 WETHERSFIELD, CT 06109  
 TELEPHONE 860.632.8766  
 FACSIMILE 860.632.8256  
 WWW.APEX.LT.COM

PROJECT TITLE:  
**THE VILLAGE  
 MONTVILLE, CT**

DRAWING TITLE:  
**EXTERIOR LIGHTING  
 PHOTOMETRIC CALCULATION**

SCALE: 1"=30'-0"

DATE: 3/15/22

DRAWN BY: LC

SHEET:  
**SL-5A**

APPROVED BY THE MONTVILLE INLAND WETLAND COMMISSION ON \_\_\_\_\_ DATE \_\_\_\_\_  
 CHAIRMAN/SECRETARY \_\_\_\_\_ DATE \_\_\_\_\_

APPROVED BY THE MONTVILLE PLANNING AND ZONING COMMISSION ON \_\_\_\_\_ DATE \_\_\_\_\_  
 CHAIRMAN/SECRETARY \_\_\_\_\_ DATE \_\_\_\_\_

**CR2**  
**Loureiro**  
 LANDSCAPE ARCHITECTURE • SITE PLANNING  
 100 Northwest Drive • Hamden, Connecticut 06602  
 An Employee Owned Company • www.Loureiro.com  
 © Loureiro, Inc. All Rights Reserved 2021

SCALE: 1" = 40'  
 CORR. NO. 88VA9.01  
 DATE: 03/15/2022  
 DRAWN BY: \_\_\_\_\_ DATE: \_\_\_\_\_  
 APPROVED BY: \_\_\_\_\_ DATE: \_\_\_\_\_

**SITE PHOTOMETRIC PLAN**

**VILLAGE APARTMENTS - PHASE III**  
 15 JEROME AVENUE, 82 JEROME ROAD AND 232 ROUTE 32, UNCASVILLE - MONTVILLE, CT  
**VILLAGE APARTMENTS LLC AND CONNECTICUT MULTIFAMILY EQUITIES II, LLC**  
 1099 NORTH STREET, WHITE PLAINS, NY

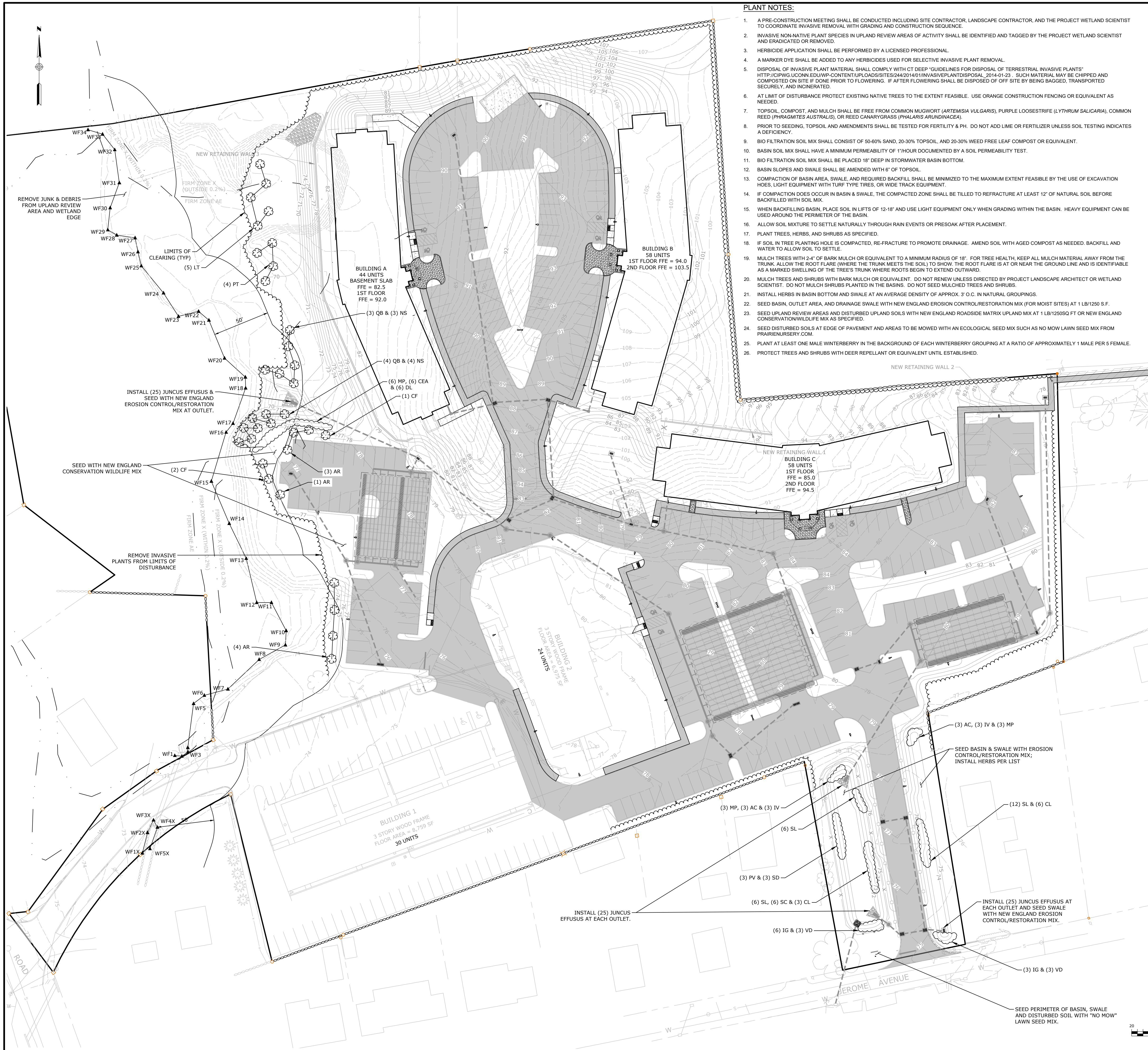
APPROVED BY THE MONTVILLE INLAND WETLAND COMMISSION ON \_\_\_\_\_ DATE \_\_\_\_\_  
 CHAIRMAN/SECRETARY \_\_\_\_\_ DATE \_\_\_\_\_

APPROVED BY THE MONTVILLE PLANNING AND ZONING COMMISSION ON \_\_\_\_\_ DATE \_\_\_\_\_  
 CHAIRMAN/SECRETARY \_\_\_\_\_ DATE \_\_\_\_\_

DRAWING  
**19000079.15**

SHEET NO. 9 NO. OF SHEETS 14





- PLANT NOTES:**
- A PRE-CONSTRUCTION MEETING SHALL BE CONDUCTED INCLUDING SITE CONTRACTOR, LANDSCAPE CONTRACTOR, AND THE PROJECT WETLAND SCIENTIST TO COORDINATE INVASIVE REMOVAL WITH GRADING AND CONSTRUCTION SEQUENCE.
  - INVASIVE NON-NATIVE PLANT SPECIES IN UPLAND REVIEW AREAS OF ACTIVITY SHALL BE IDENTIFIED AND TAGGED BY THE PROJECT WETLAND SCIENTIST AND ERADICATED OR REMOVED.
  - HERBICIDE APPLICATION SHALL BE PERFORMED BY A LICENSED PROFESSIONAL.
  - A MARKER DYE SHALL BE ADDED TO ANY HERBICIDES USED FOR SELECTIVE INVASIVE PLANT REMOVAL.
  - DISPOSAL OF INVASIVE PLANT MATERIAL SHALL COMPLY WITH CT DEEP "GUIDELINES FOR DISPOSAL OF TERRESTRIAL INVASIVE PLANTS" [HTTP://CWPWG.UCONN.EDU/WP-CONTENT/UPLOADS/SITES/24/2014/01/INVASIVEPLANTDISPOSAL\\_2014-01-23](http://cwpwg.uconn.edu/wp-content/uploads/sites/24/2014/01/invasiveplantdisposal_2014-01-23). SUCH MATERIAL MAY BE CHIPPED AND COMPOSTED ON SITE IF DONE PRIOR TO FLOWERING. IF AFTER FLOWERING SHALL BE DISPOSED OF OFF-SITE BY BEING BAGGED, TRANSPORTED SECURELY, AND INCINERATED.
  - AT LIMIT OF DISTURBANCE PROTECT EXISTING NATIVE TREES TO THE EXTENT FEASIBLE. USE ORANGE CONSTRUCTION FENCING OR EQUIVALENT AS NEEDED.
  - TOPSOIL, COMPOST, AND MULCH SHALL BE FREE FROM COMMON MUGWORT (*ARTEMISIA VULGARIS*), PURPLE LOOSESTRIFE (*LYTHRUM SALICARIA*), COMMON REED (*PHRAGMITES AUSTRALIS*), OR REED CANARYGRASS (*PHALARIS ARUNDINACEA*).
  - PRIOR TO SEEDING, TOPSOIL AND AMENDMENTS SHALL BE TESTED FOR FERTILITY & PH. DO NOT ADD LIME OR FERTILIZER UNLESS SOIL TESTING INDICATES A DEFICIENCY.
  - BIO FILTRATION SOIL MIX SHALL CONSIST OF 50-60% SAND, 20-30% TOPSOIL, AND 20-30% WEED FREE LEAF COMPOST OR EQUIVALENT.
  - BASIN SOIL MIX SHALL HAVE A MINIMUM PERMEABILITY OF 1" HOUR DOCUMENTED BY A SOIL PERMEABILITY TEST.
  - BIO FILTRATION SOIL MIX SHALL BE PLACED 18" DEEP IN STORMWATER BASIN BOTTOM.
  - BASIN SLOPES AND SWALE SHALL BE AMENDED WITH 6" OF TOPSOIL.
  - COMPACTION OF BASIN AREA, SWALE, AND REQUIRED BACKFILL SHALL BE MINIMIZED TO THE MAXIMUM EXTENT FEASIBLE BY THE USE OF EXCAVATION HOES, LIGHT EQUIPMENT WITH TURF-TYPE TIRES, OR WIDE TRACK EQUIPMENT.
  - IF COMPACTION DOES OCCUR IN BASIN & SWALE, THE COMPACTED ZONE SHALL BE TILLED TO REFRRACTURE AT LEAST 12" OF NATURAL SOIL BEFORE BACKFILLED WITH SOIL MIX.
  - WHEN BACKFILLING BASIN, PLACE SOIL IN LIFTS OF 12-18" AND USE LIGHT EQUIPMENT ONLY WHEN GRADING WITHIN THE BASIN. HEAVY EQUIPMENT CAN BE USED AROUND THE PERIMETER OF THE BASIN.
  - ALLOW SOIL MIXTURE TO SETTLE NATURALLY THROUGH RAIN EVENTS OR PRESOAK AFTER PLACEMENT.
  - PLANT TREES, HERBS, AND SHRUBS AS SPECIFIED.
  - IF SOIL IN TREE PLANTING HOLE IS COMPACTED, RE-FRACTURE TO PROMOTE DRAINAGE. AMEND SOIL WITH AGED COMPOST AS NEEDED. BACKFILL AND WATER TO ALLOW SOIL TO SETTLE.
  - MULCH TREES WITH 2-4" OF BARK MULCH OR EQUIVALENT TO A MINIMUM RADIUS OF 18". FOR TREE HEALTH, KEEP ALL MULCH MATERIAL AWAY FROM THE TRUNK. ALLOW THE ROOT FLARE (WHERE THE TRUNK MEETS THE SOIL) TO SHOW. THE ROOT FLARE IS AT OR NEAR THE GROUND LINE AND IS IDENTIFIABLE AS A MARKED SWELLING OF THE TREE'S TRUNK WHERE ROOTS BEGIN TO EXTEND OUTWARD.
  - MULCH TREES AND SHRUBS WITH BARK MULCH OR EQUIVALENT. DO NOT RENEW UNLESS DIRECTED BY PROJECT LANDSCAPE ARCHITECT OR WETLAND SCIENTIST. DO NOT MULCH SHRUBS PLANTED IN THE BASINS. DO NOT SEED MULCHED TREES AND SHRUBS.
  - INSTALL HERBS IN BASIN BOTTOM AND SWALE AT AN AVERAGE DENSITY OF APPROX. 3' O.C. IN NATURAL GROUPINGS.
  - SEED BASIN, OUTLET AREA, AND DRAINAGE SWALE WITH NEW ENGLAND EROSION CONTROL/RESTORATION MIX (FOR MOIST SITES) AT 1 LB/1250 S.F.
  - SEED UPLAND REVIEW AREAS AND DISTURBED UPLAND SOILS WITH NEW ENGLAND ROADSIDE MATRIX UPLAND MIX AT 1 LB/1250 SQ FT OR NEW ENGLAND CONSERVATION WILDLIFE MIX AS SPECIFIED.
  - SEED DISTURBED SOILS AT EDGE OF PAVEMENT AND AREAS TO BE MOWED WITH AN ECOLOGICAL SEED MIX SUCH AS NO MOW LAWN SEED MIX FROM PRAIRIENURSERY.COM.
  - PLANT AT LEAST ONE MALE WINTERBERRY IN THE BACKGROUND OF EACH WINTERBERRY GROUPING AT A RATIO OF APPROXIMATELY 1 MALE PER 5 FEMALE.
  - PROTECT TREES AND SHRUBS WITH DEER REPELLANT OR EQUIVALENT UNTIL ESTABLISHED.

WETLAND MITIGATION & STORMWATER BASIN PLANT LIST					
TREES	SCIENTIFIC NAME	COMMON NAME	QUANTITY	SIZE	ROOT
AR	<i>Acer rubrum</i>	Red Maple	8	6"	Cont
CF	<i>Cornus florida</i>	Flowering Dogwood	3	6-8' HT	Cont
NS	<i>Nyssa sylvatica</i>	Black Gum	7	4-6'	Cont
QB	<i>Quercus bicolor</i>	Swamp White Oak	7	4-6'	Cont
LT	<i>Liriodendron tulipifera</i>	Tulip Tree	5	4-6'	Cont
PT	<i>Populus tremuloides</i>	Quacking Aspen	4	6-8' HT	Cont
PV	<i>Prunus virginiana</i>	Chokecherry	3	4-6'	Cont
<b>SHRUBS</b>					
Ac	<i>Amelanchier canadensis</i>	Shadblow	6	3-4'	Cont
CEA	<i>Ceanothus americana</i>	New Jersey Tea	6	3-4'	Cont
CO	<i>Cephalanthus occidentalis</i>	Buttontree	6	3-4'	Cont
CL	<i>Clethra aliflora</i>	Sweet Pepperbush	9	3-4'	Cont
CA	<i>Cornus amomum</i>	Silky Dogwood	6	3-4'	Cont
DL	<i>Diervilla lonicera</i>	Northern Bush Honeysuckle	6	18-24"	Cont
IG	<i>Ilex glabra</i>	Inkberry	9	3-4'	Cont
IV	<i>Ilex verticillata</i> (female)	Winterberry	5	3-4'	Cont
IVM	<i>Ilex verticillata</i> (male)	Winterberry	1	3-4'	Cont
MP	<i>Morella pensylvanica</i>	Northern Bayberry	12	18-24"	Cont
SC	<i>Sambucus americana</i>	Common Elderberry	6	3-4'	Cont
SD	<i>Salix discolor</i>	Pussy Willow	3	3-4'	Cont
SL	<i>Spiraea latifolia</i>	Meadowsweet	24	3-4'	Cont
VD	<i>Viburnum dentatum</i>	Arrowwood	6	3-4'	Cont
<b>HERBS</b>					
	<i>Asclepias incarnata</i>	Swamp Milkweed	100	2" Plugs	-
	<i>Asclepias tuberosa</i>	Butterfly Weed	50	2" Plugs	-
	<i>Aster novae-angliae</i>	New England Aster	50	2" Plugs	-
	<i>Eupatorium maculatum</i>	Spotted Joe-pye Weed	50	2" Plugs	-
	<i>Juncus effusus</i>	Soft Rush	100	2" Plugs	-
	<i>Iris versicolor</i>	Blue Flag	50	2" Plugs	-
	<i>Lobelia cardinalis</i>	Cardinal Flower	50	2" Plugs	-
	<i>Monarda fistulosa</i>	Wild Bergamot	50	2" Plugs	-
	<i>Rudbeckia laciniata</i>	Cut-leaf Coneflower	50	2" Plugs	-
	<i>Vernonia noveboracensis</i>	Ironweed	50	2" Plugs	-
	<i>Zizia aurea</i>	Golden Alexanders	50	2" Plugs	-

- SEED MIXES:**
- NEW ENGLAND ROADSIDE MATRIX UPLAND MIX
    - APPLICATION RATE: 1 LB/1250 SQ. FT.
    - NEW ENGLAND EROSION CONTROL/RESTORATION MIX FOR MOIST SITES
    - APPLICATION RATE: 1 LB/1250 SQ. FT.
  - NEW ENGLAND CONSERVATION WILDLIFE MIX (BASIN & SWALE SLOPES AND DISTURBED UPLAND SOILS)
    - APPLICATION RATE: 1 LB/1750 SQ. FT.
    - SEED MIXES ARE AVAILABLE FROM NEW ENGLAND WETLAND PLANTS, INC. (NEWP.COM)
  - "NO MOW" LAWN MIX (PERIMETER OF BASIN & SWALE)
    - 6 FESCUA SPP. FINE FESCUES
    - APPLICATION RATE: 5 LB/1000 SQ. FT.
    - AVAILABLE FROM PRAIRIENURSERY.COM
  - NEW ENGLAND SEMI-SHADE GRASS AND FORBS MIX
    - APPLICATION RATE: 1 LB/1450 SQ. FT.
    - NEW ENGLAND CONSERVATION WILDLIFE MIX
    - APPLICATION RATE: 1 LB/1750 SQ. FT.
    - SEED MIXES ARE AVAILABLE FROM NEW ENGLAND WETLAND PLANTS, INC. (NEWP.COM)
  - "NO MOW" LAWN MIX (AREAS TO BE MOWED)
    - 6 FESCUA SPP. FINE FESCUES
    - APPLICATION RATE: 5 LB/1000 SQ. FT.
    - AVAILABLE FROM PRAIRIENURSERY.COM

STAMP

DATE: 03/15/2021  
 SWM: 11/15/2021  
 DATE: 03/15/2021

SCALE: 1" = 40'

DATE: 3/11/2021  
 DRAWN BY: BJM  
 APPROVED BY: PB

CONTRACT NO. 88VA0.01

DATE: 3/11/2021  
 DRAWN BY: BJM  
 APPROVED BY: PB

APPROVED BY THE MONTVILLE INLAND WETLAND COMMISSION ON \_\_\_\_\_ DATE \_\_\_\_\_

CHAIRMAN/SECRETARY \_\_\_\_\_ DATE \_\_\_\_\_

APPROVED BY THE MONTVILLE PLANNING AND ZONING COMMISSION ON \_\_\_\_\_ DATE \_\_\_\_\_

CHAIRMAN/SECRETARY \_\_\_\_\_ DATE \_\_\_\_\_

19000079.09

NO. OF SHEETS: 14  
 SHEET NO.: 10

**WETLAND MITIGATION & STORMWATER BASIN PLANTING PLAN**

**VILLAGE APARTMENTS - PHASE III**

15 JEROME AVENUE, 82 JEROME ROAD AND 232 ROUTE 32, UNCASVILLE - MONTVILLE, CT

VILLAGE APARTMENTS LLC AND CONNECTICUT MULTIFAMILY EQUITIES II, LLC

1099 NORTH STREET, WHITE PLAINS, NY

V:\CT\MONTVILLE\BERNARD-00-00-005 PHASE III\005 WETLAND MITIGATION PLAN.DWG DATE: WETLAND MITIGATION DRAWN: 3/15/2021 9:40:41 PM PLOT: 3, 15/2/2021 2:07 PM



