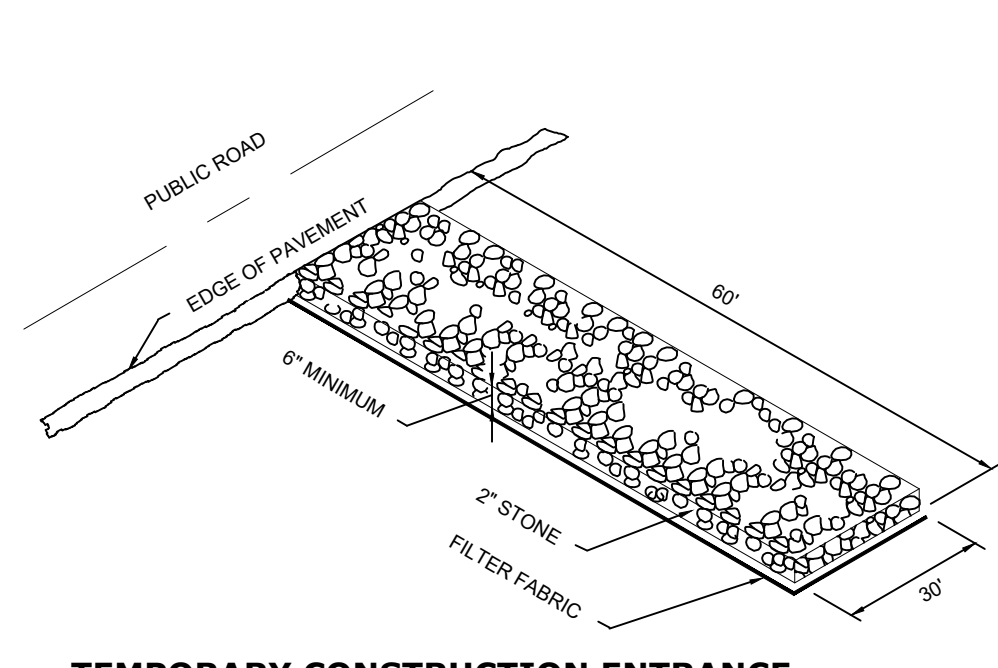
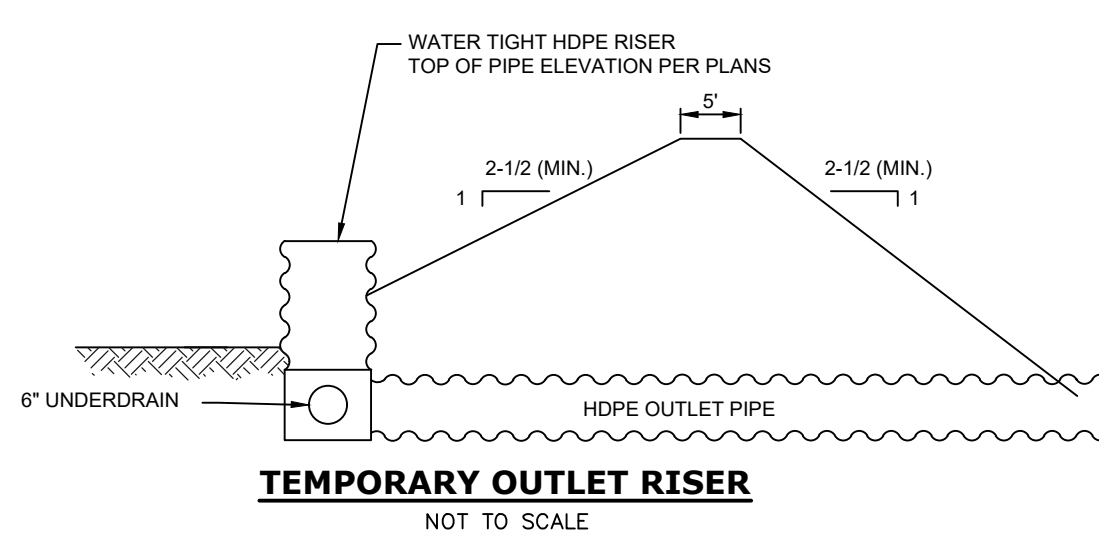


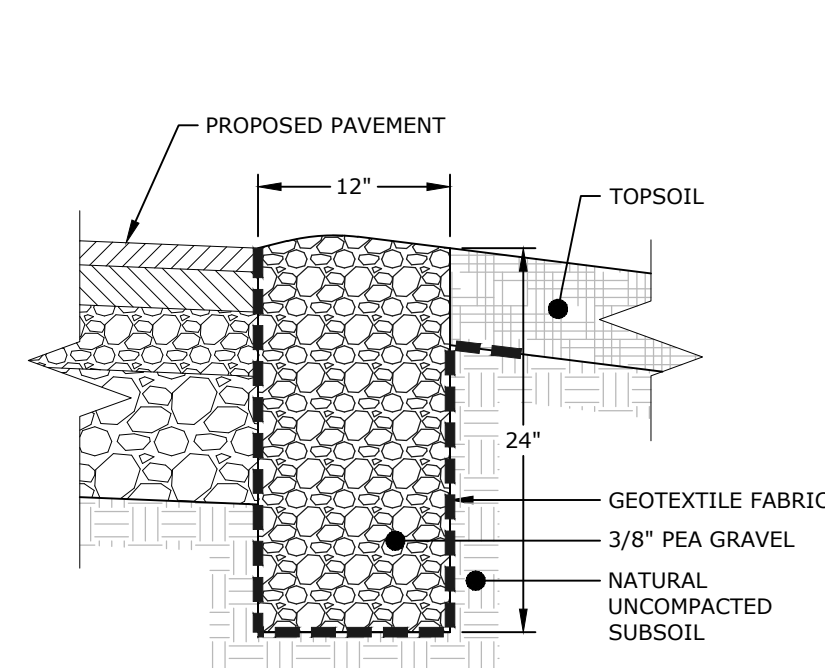
SEDIMENT FENCE
NOT TO SCALE



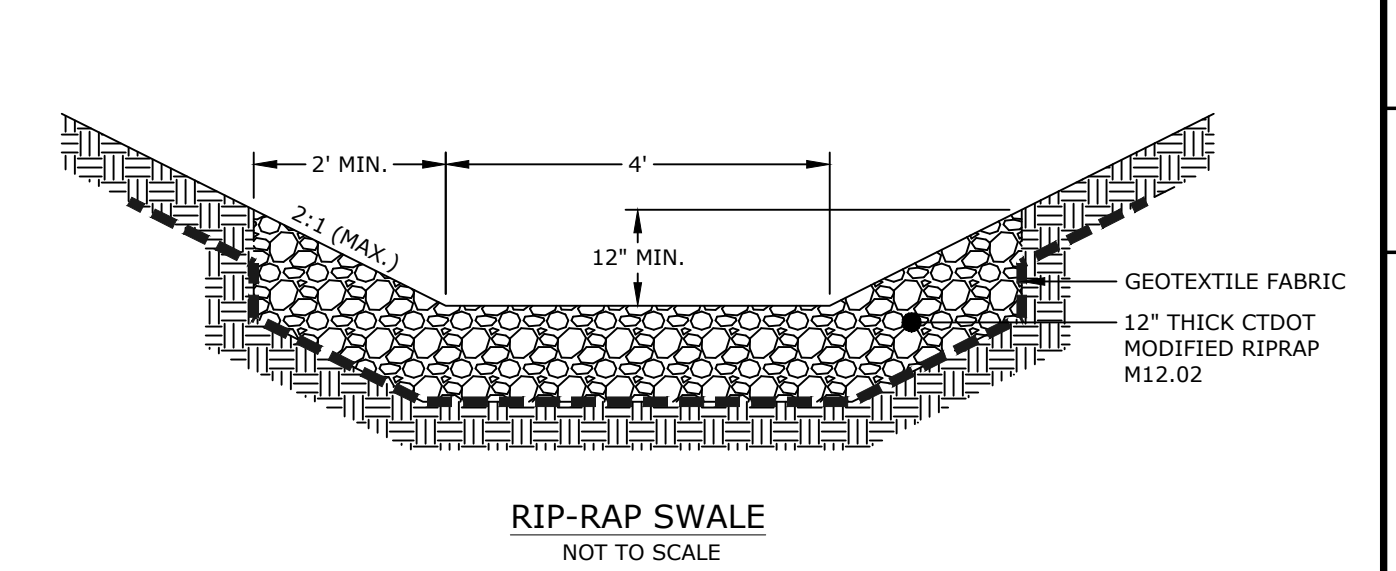
TEMPORARY CONSTRUCTION ENTRANCE
NOT TO SCALE



TEMPORARY OUTLET RISER
NOT TO SCALE



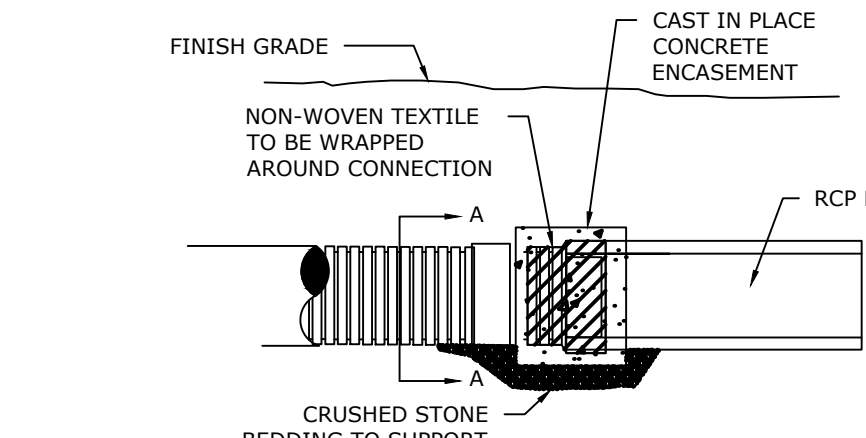
PEA GRAVEL DIAPHRAGM
NOT TO SCALE



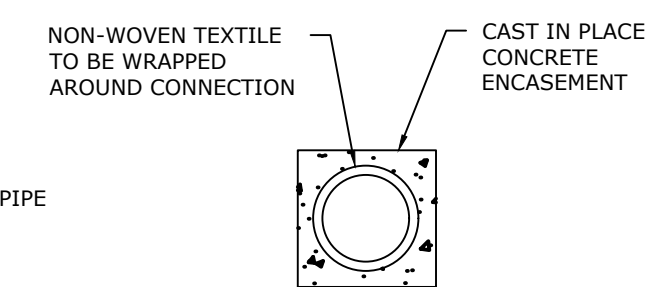
RIP-RAP SWALE
NOT TO SCALE

NOTE: PREMANUFACTURED FENCE MAY BE USED.

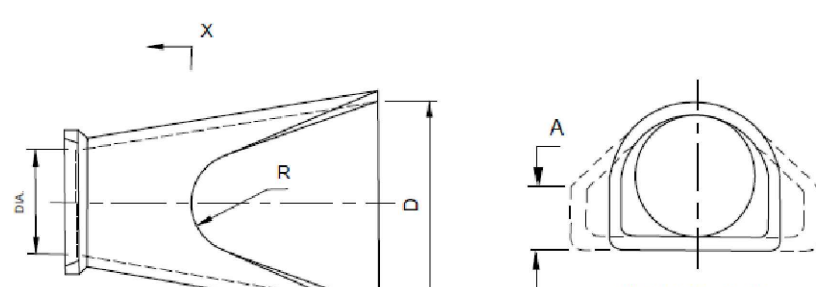
NOTE: IN GENERAL PLACE WATTLE PARRALLEL TO SLOPE CONTOURS.



HDPE TO RCP CONNECTION (GEOTEXTILE WRAP)
NOT TO SCALE



SECTION A-A
NOT TO SCALE

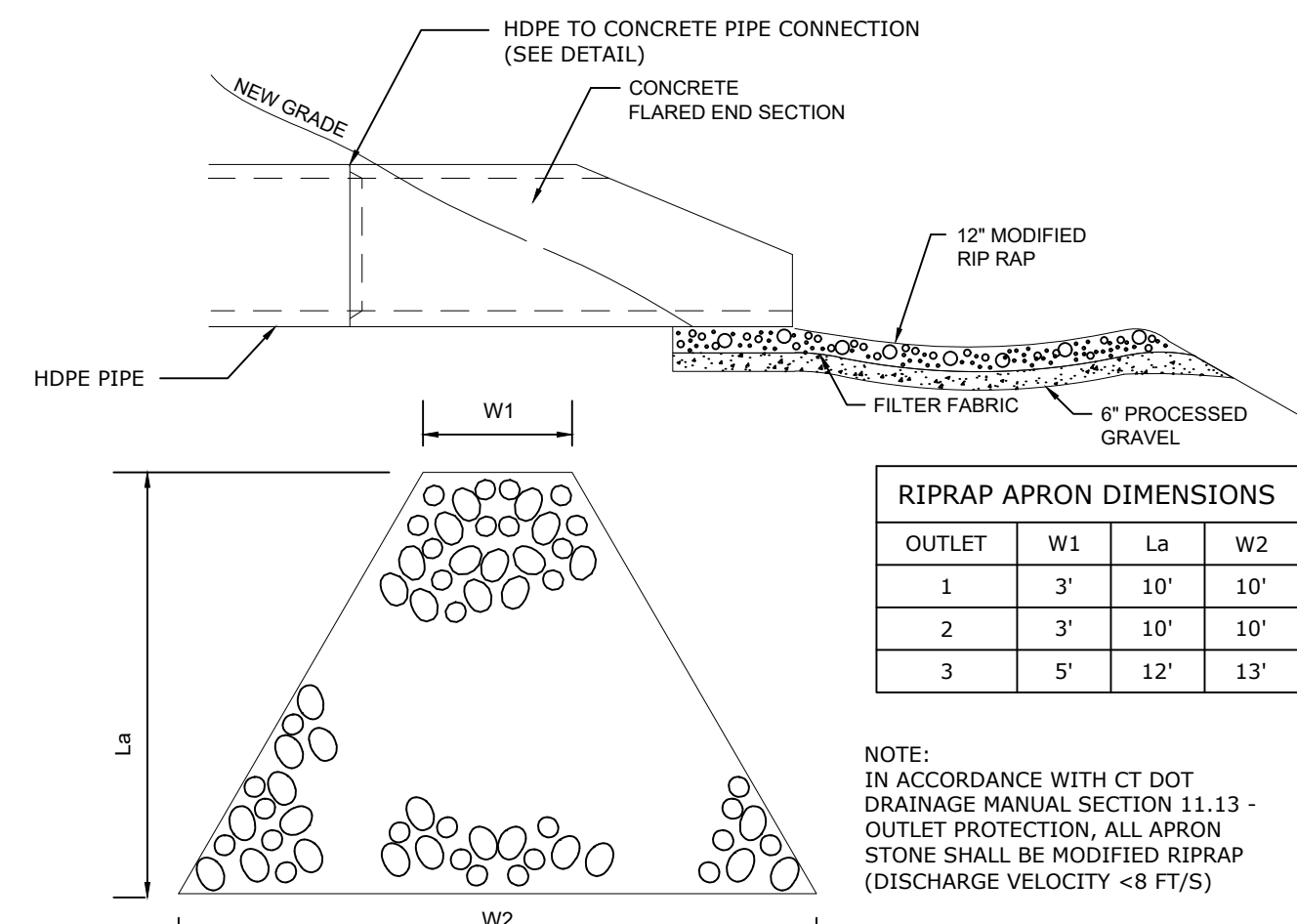


SECTION X-X
NOT TO SCALE

CULVERT END SECTIONS CONFORM TO AASHTO M170 CLASS B MASSACHUSETTS STANDARD SPECIFICATIONS FOR HIGHWAYS AND BRIDGES SECTION 810.02.2. ASTM AND CONNECTICUT DEPARTMENT OF TRANSPORTATION STANDARD SPECIFICATION M.38 91.23. CULVERT END SECTIONS AVAILABLE WITH BELL JOINT (OUTLET) OR SPIGOT JOINT (INLET).

OSA	A	B	C	D	E	S
12"	0"	0.06'	4.87(20)	2.26'	3'	3'
18"	0"	0.09'	7.21(32)	3.39'	3'	3'
24"	0"	0.12'	9.54(40)	4.52'	3'	3'
30"	0"	0.15'	11.88(52)	5.65'	3'	3'
36"	0"	0.18'	14.21(64)	6.78'	3'	3'
42"	0"	0.21'	16.55(76)	7.91'	3'	3'
48"	0"	0.24'	18.88(88)	9.04'	3'	3'
54"	0"	0.27'	21.22(100)	10.17'	3'	3'
60"	0"	0.30'	23.55(112)	11.30'	3'	3'
66"	0"	0.33'	25.89(124)	12.43'	3'	3'
72"	0"	0.36'	28.22(136)	13.56'	3'	3'
78"	0"	0.39'	30.56(148)	14.69'	3'	3'
84"	0"	0.42'	32.89(160)	15.82'	3'	3'
90"	0"	0.45'	35.23(172)	16.95'	3'	3'
96"	0"	0.48'	37.56(184)	18.08'	3'	3'
102"	0"	0.51'	39.90(200)	19.21'	3'	3'
108"	0"	0.54'	42.23(212)	20.34'	3'	3'
114"	0"	0.57'	44.57(224)	21.47'	3'	3'
120"	0"	0.60'	46.90(240)	22.60'	3'	3'

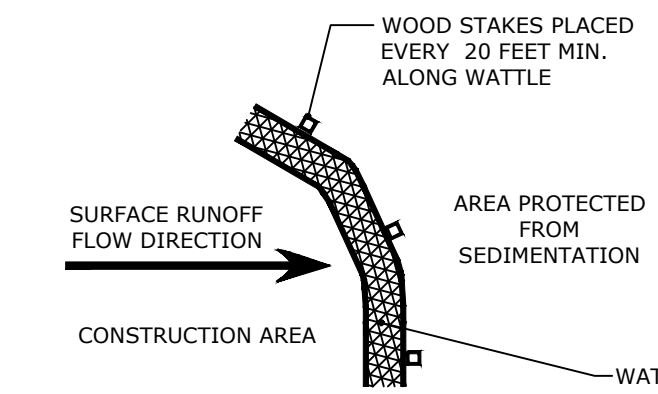
REINFORCED CONCRETE CULVERT ENDS
NOT TO SCALE



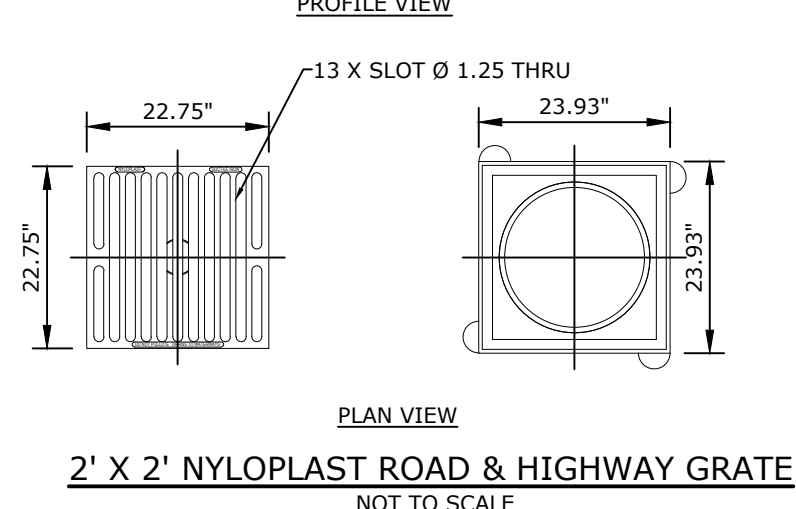
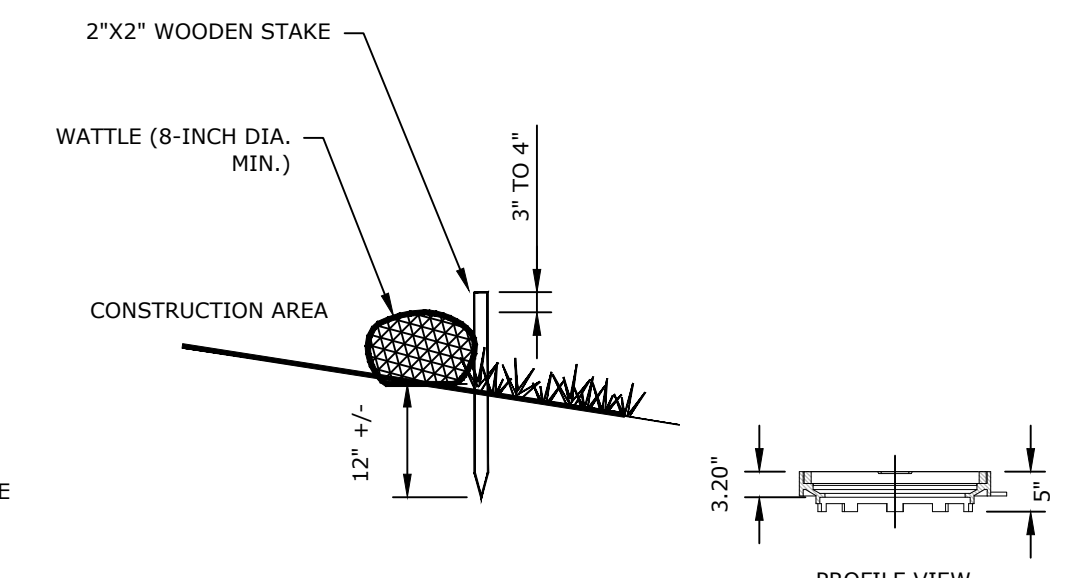
RIPRAP APRON
NOT TO SCALE

OUTLET	W1	L1	W2
1	3'	10'	10'
2	3'	10'	10'
3	5'	12'	13'

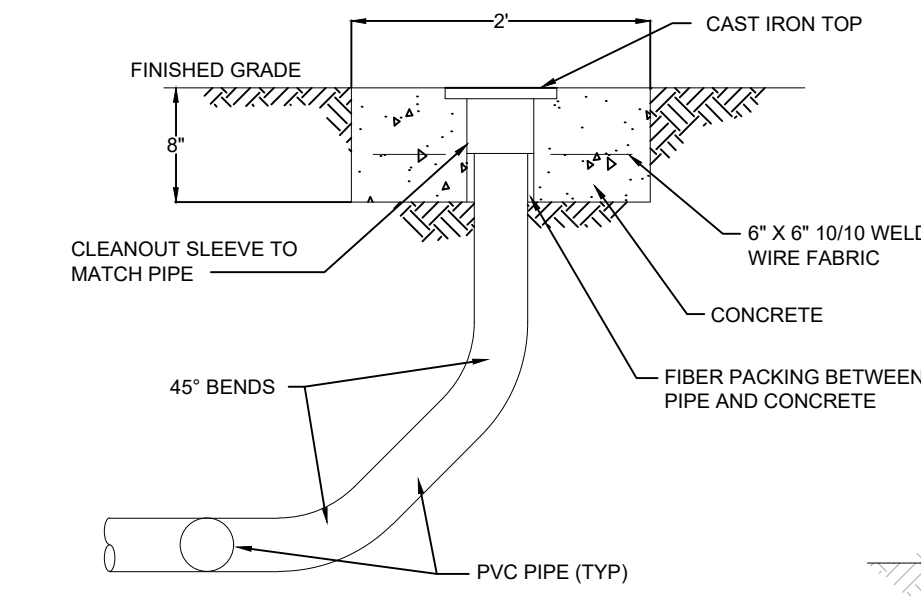
NOTE: IN ACCORDANCE WITH CT DOT DRAINAGE MANUAL SECTION 11.13 - OUTLET PROTECTION, ALL APRON STONE SHALL BE MODIFIED RIPRAP (DISCHARGE VELOCITY < 8 FT/S)



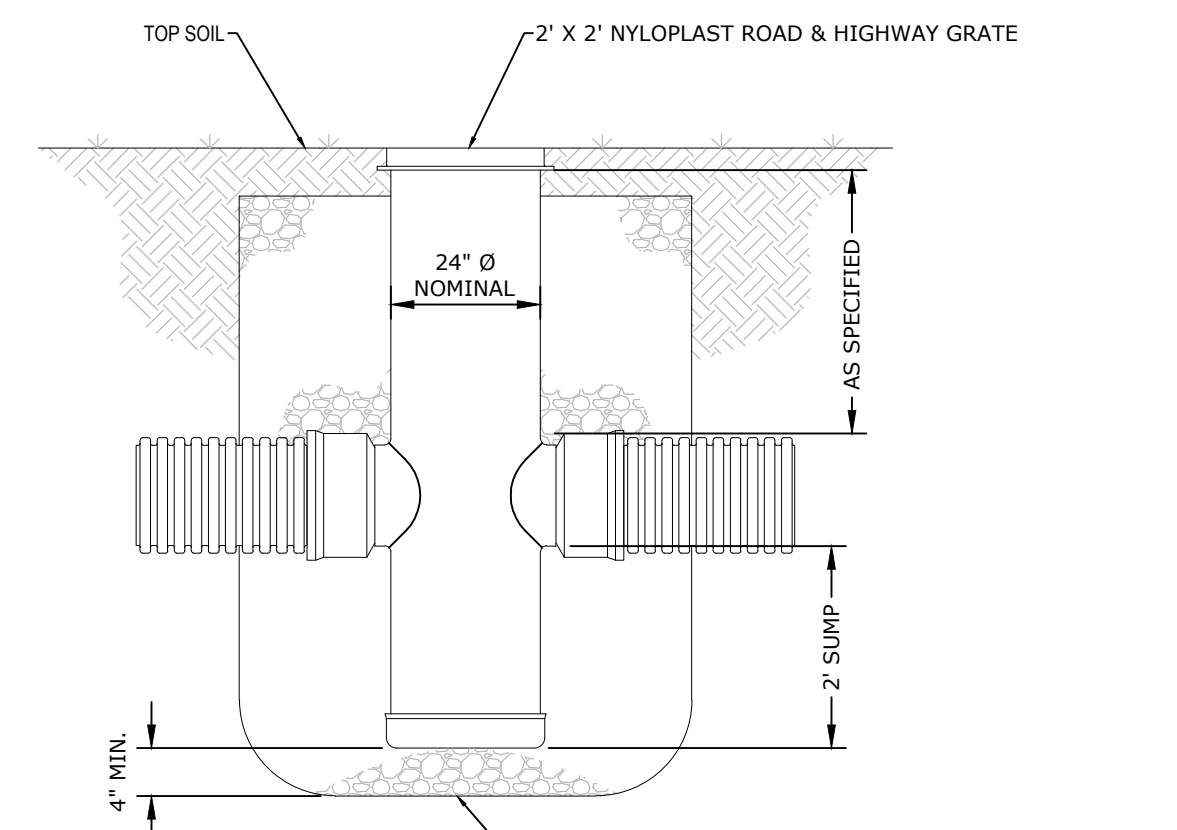
COMPOST WATTLE TYP.
NOT TO SCALE



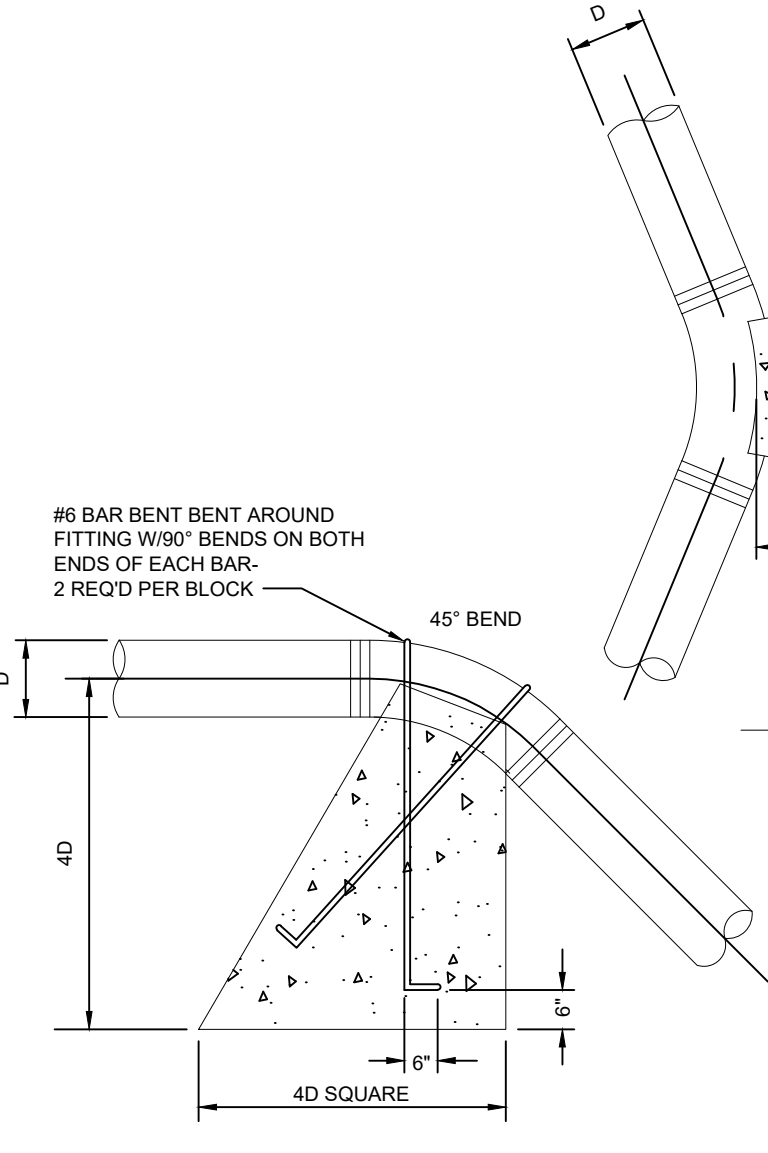
2' X 2' NYLOPLAST ROAD & HIGHWAY GRATE
NOT TO SCALE



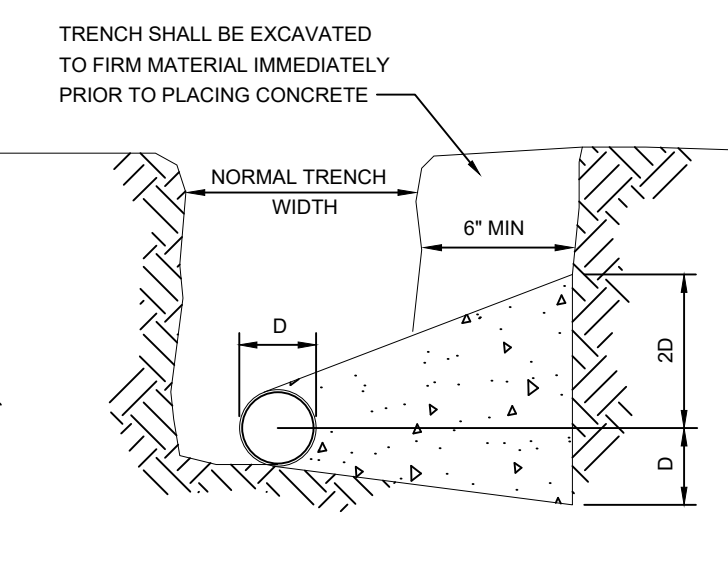
SEWER CLEANOUT DETAIL
NOT TO SCALE



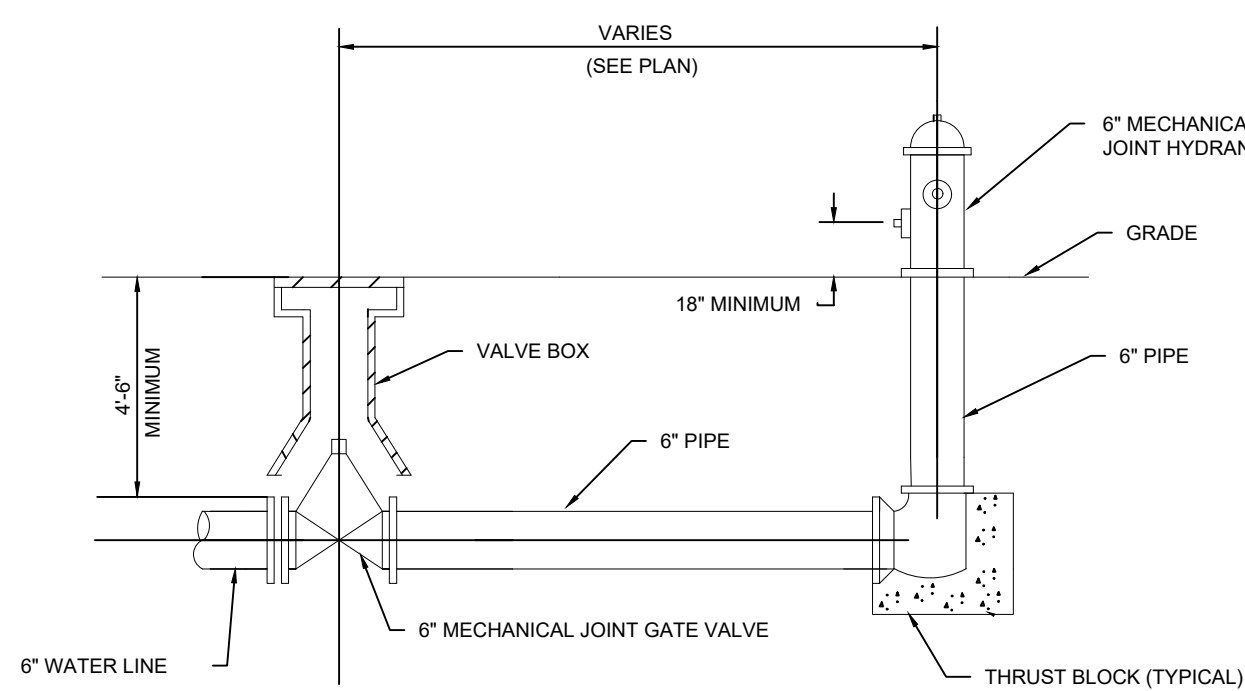
NYLOPLAST DRAIN BASIN
NOT TO SCALE



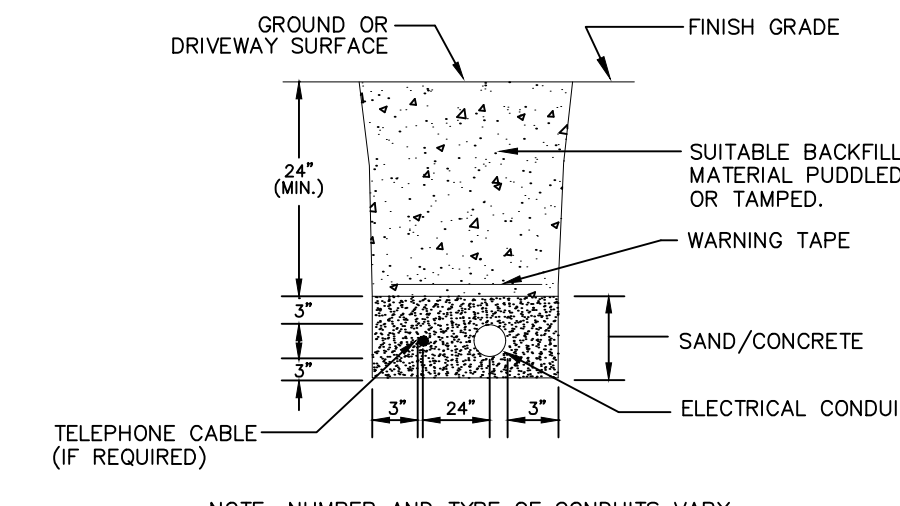
CONCRETE THRUST BLOCKING
NOT TO SCALE



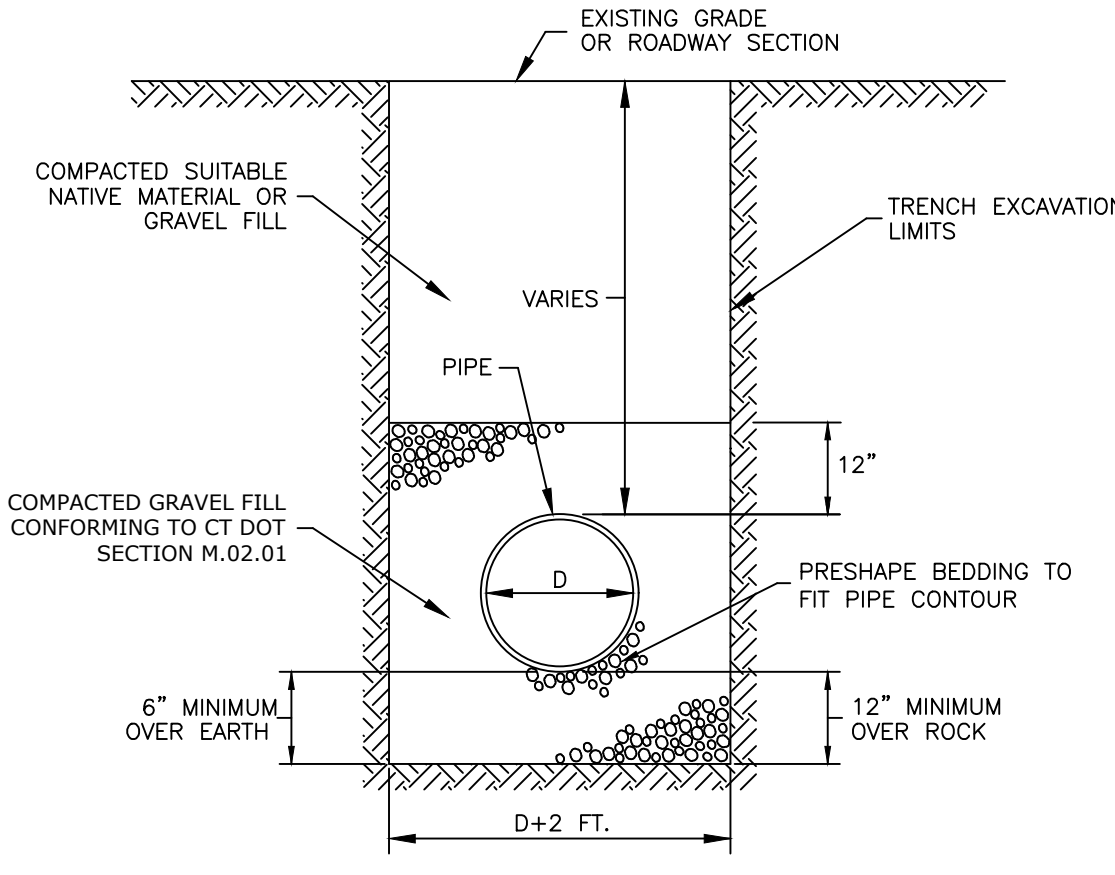
TYPICAL HYDRANT INSTALLATION
NOT TO SCALE



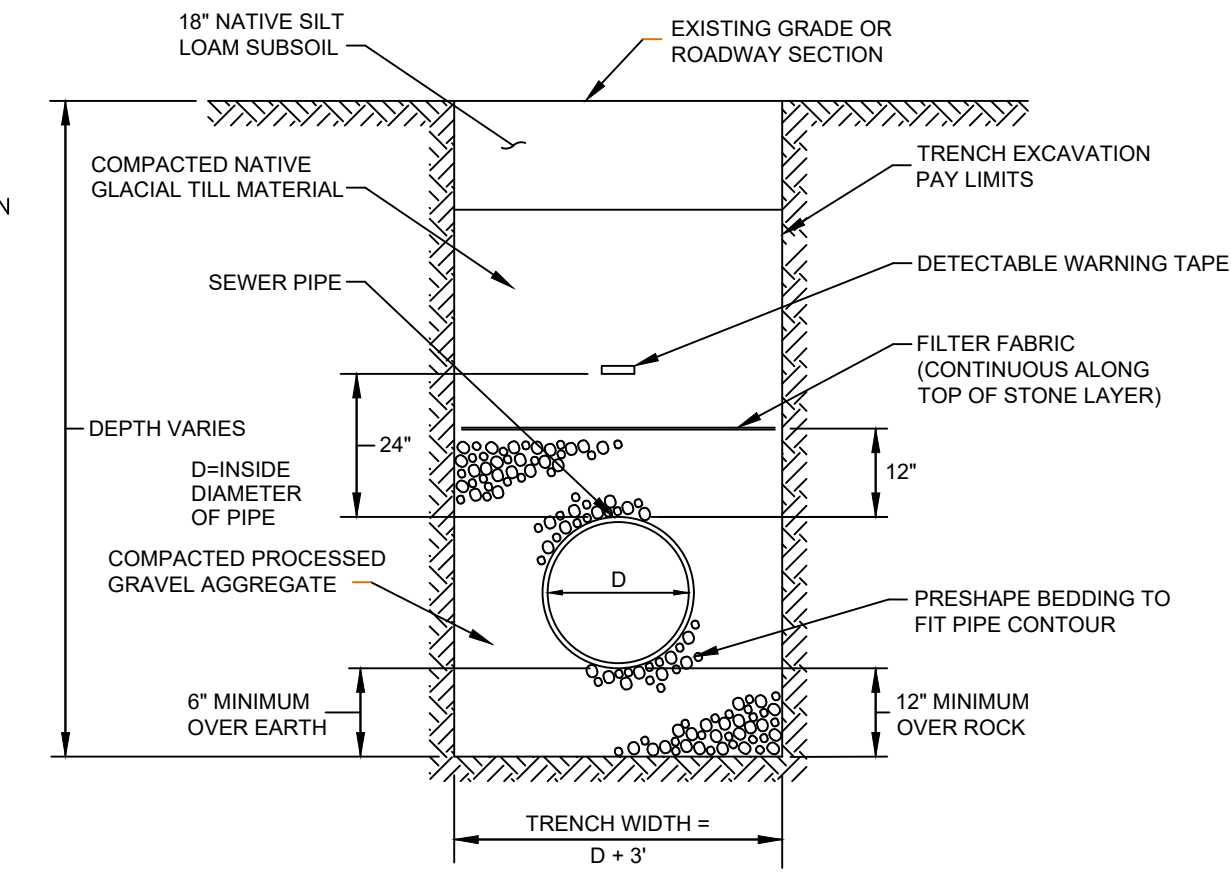
WATER LINE TRENCH
NOT TO SCALE



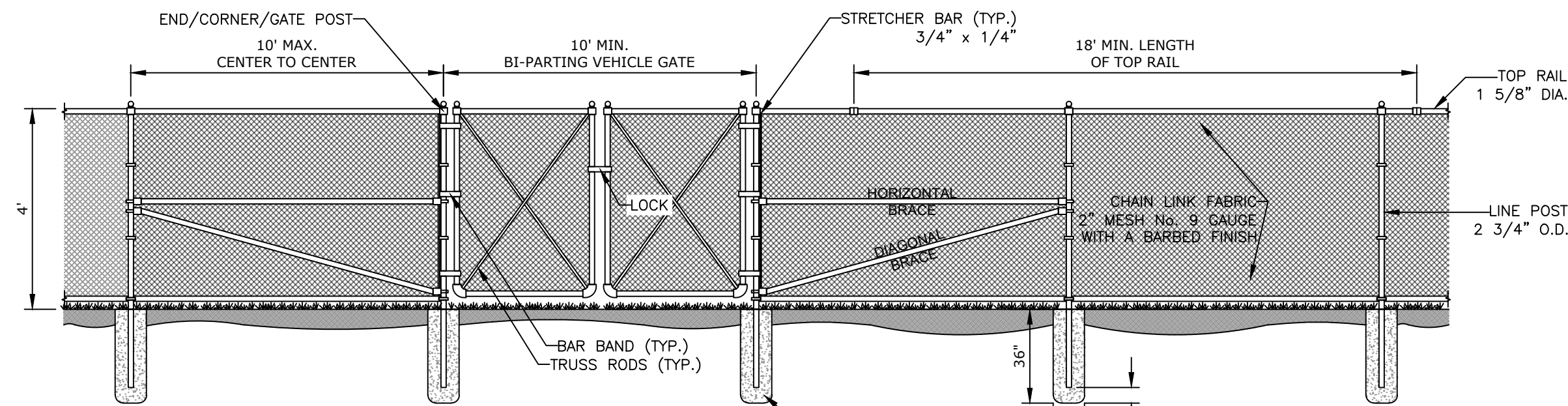
ELECTRICAL LINE TRENCH
NOT TO SCALE



STORM DRAIN TRENCH
NOT TO SCALE



SANITARY SEWER TRENCH
NOT TO SCALE



CHAIN LINK FENCE
NOT TO SCALE

- NOTES:
- CONCRETE ANCHOR/BASE SHALL BE MIN. 3000 PSI. CAST-IN-PLACE
 - PROVIDE HORIZONTAL AND DIAGONAL BRACING AT ALL CORNERS, PULL, TERMINAL AND GATE POSTS.
 - POST SHALL BE SPACE AT A MAXIMUM OF 10'-0".

APPROVED BY THE MONTVILLE INLAND WETLAND COMMISSION ON _____ DATE _____
CHAIRMAN/SECRETARY _____

APPROVED BY THE MONTVILLE PLANNING AND ZONING COMMISSION ON _____ DATE _____
CHAIRMAN/SECRETARY _____

DETAILS

VILLAGE APARTMENTS - PHASE III
15 JEROME AVENUE, 82 JEROME ROAD AND 232 ROUTE 92, UNCASVILLE - MONTVILLE, CT
VILLAGE APARTMENTS LLC AND CONNECTICUT MULTIFAMILY EQUITIES II, LLC
1099 NORTH STREET, WHITE PLAINS, NY

SCALE: NOT TO SCALE
DRAWING NO.: 88VA9 01
DATE: 3/11/2021
DRAWN BY: BJM
APPROVED BY: PB

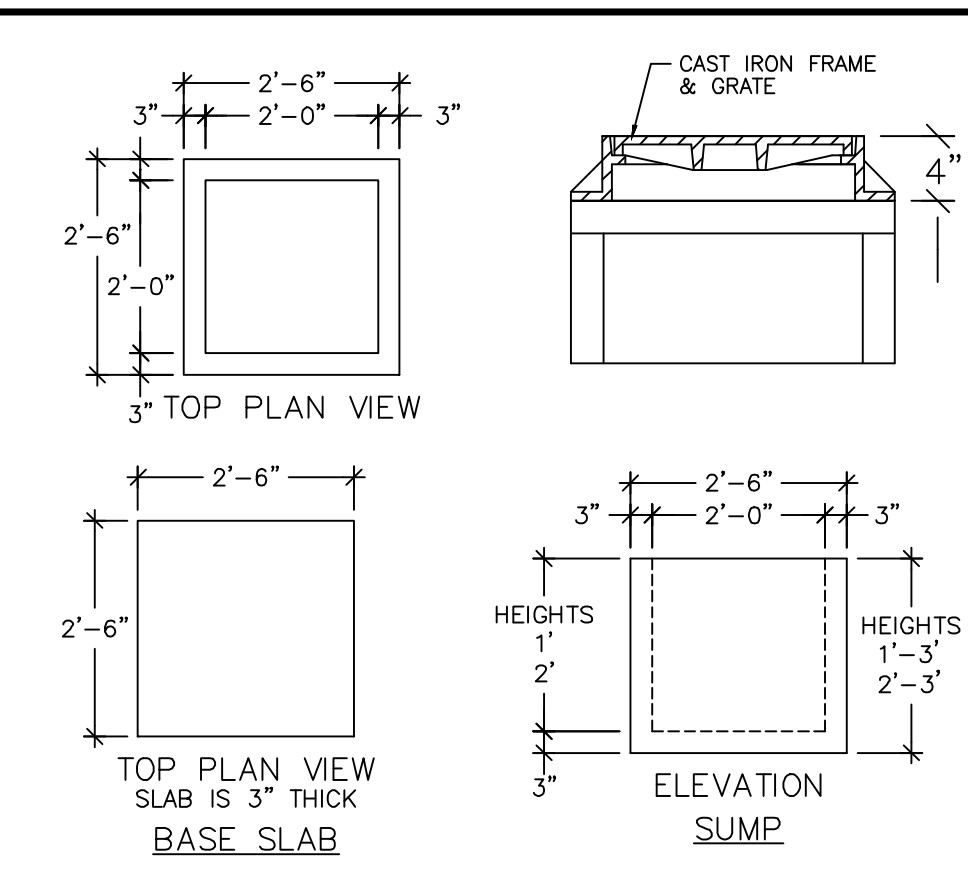
STAMP
Loureiro
Water & Facility Services • Energy Laboratory
Engineering • Construction • EITC • LEED Accredited
Loureiro Engineering Associates, Inc.
1500 Main Street, Suite 200, Wallingford, CT 06495
Phone: 860-448-0400 • Fax: 860-448-0999
An Employee Owned Company • www.loureiro.com
© Loureiro Engineering Associates, Inc. All Rights Reserved 2020

REVISIONS PER TOWN AND THIRD PARTY REVIEW COMMENTS
1 IWC AND PZC SUBMISSION DATE
2 REVISIONS PER TOWN AND THIRD PARTY REVIEW COMMENTS DATE
3 REV. DATE

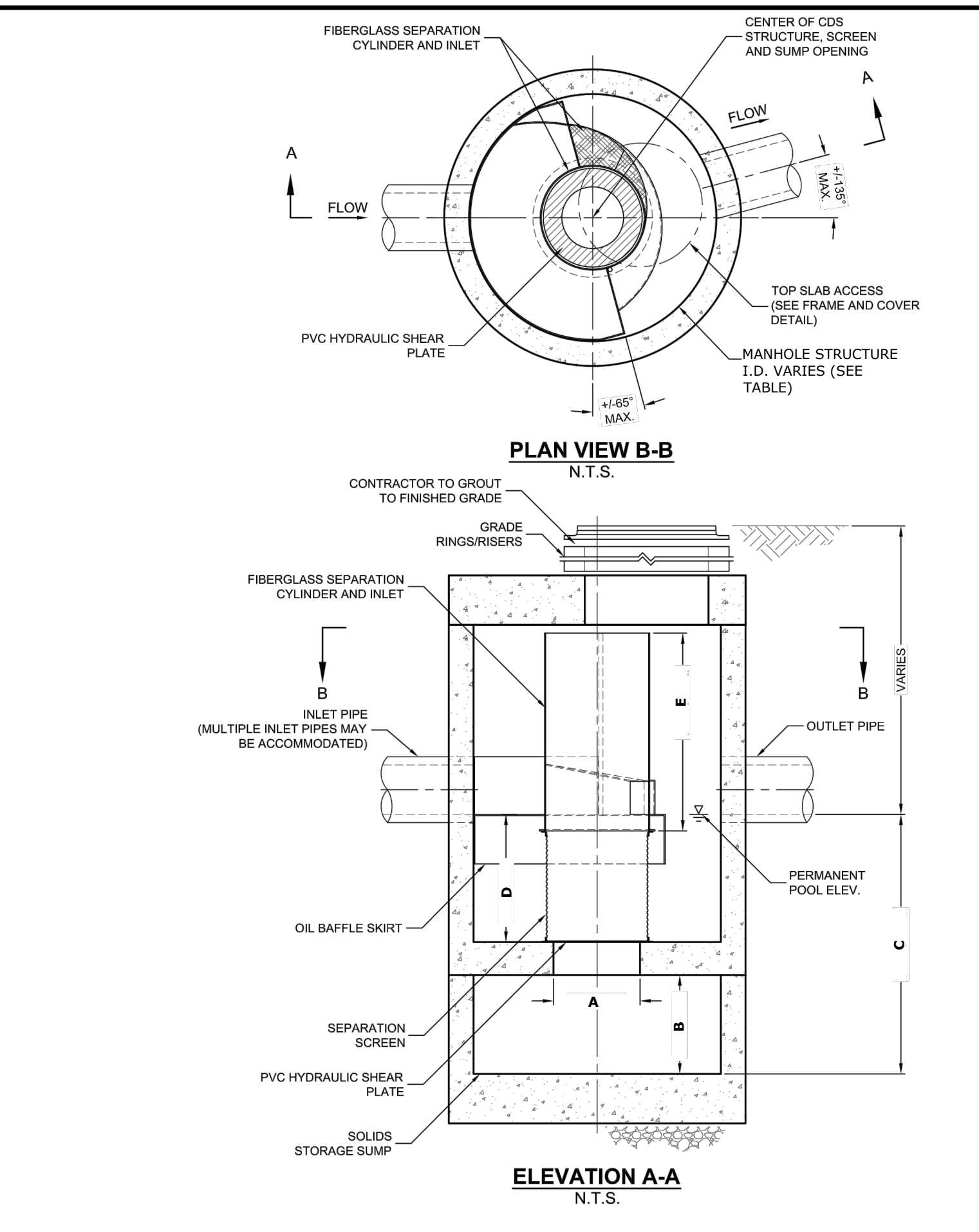
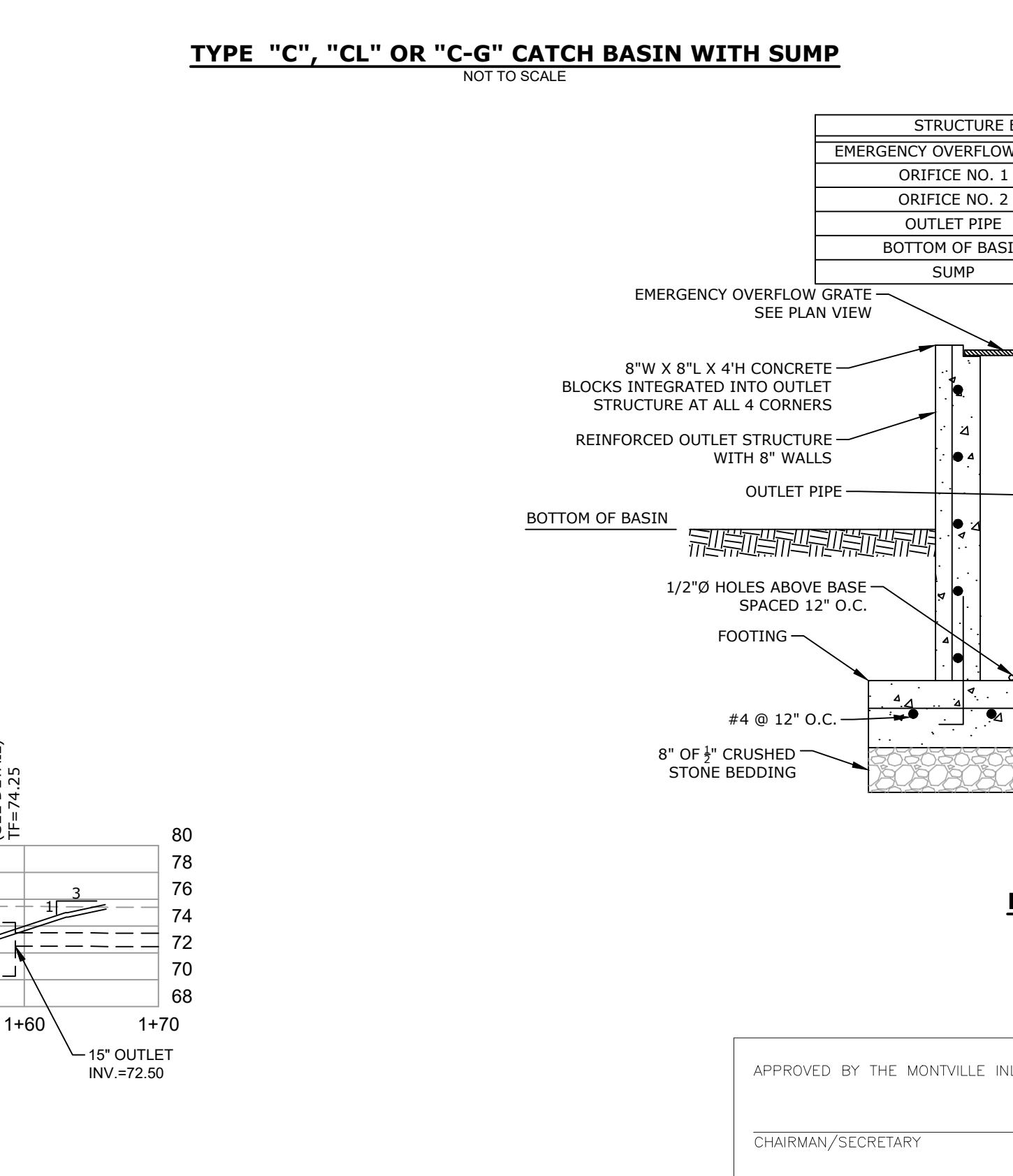
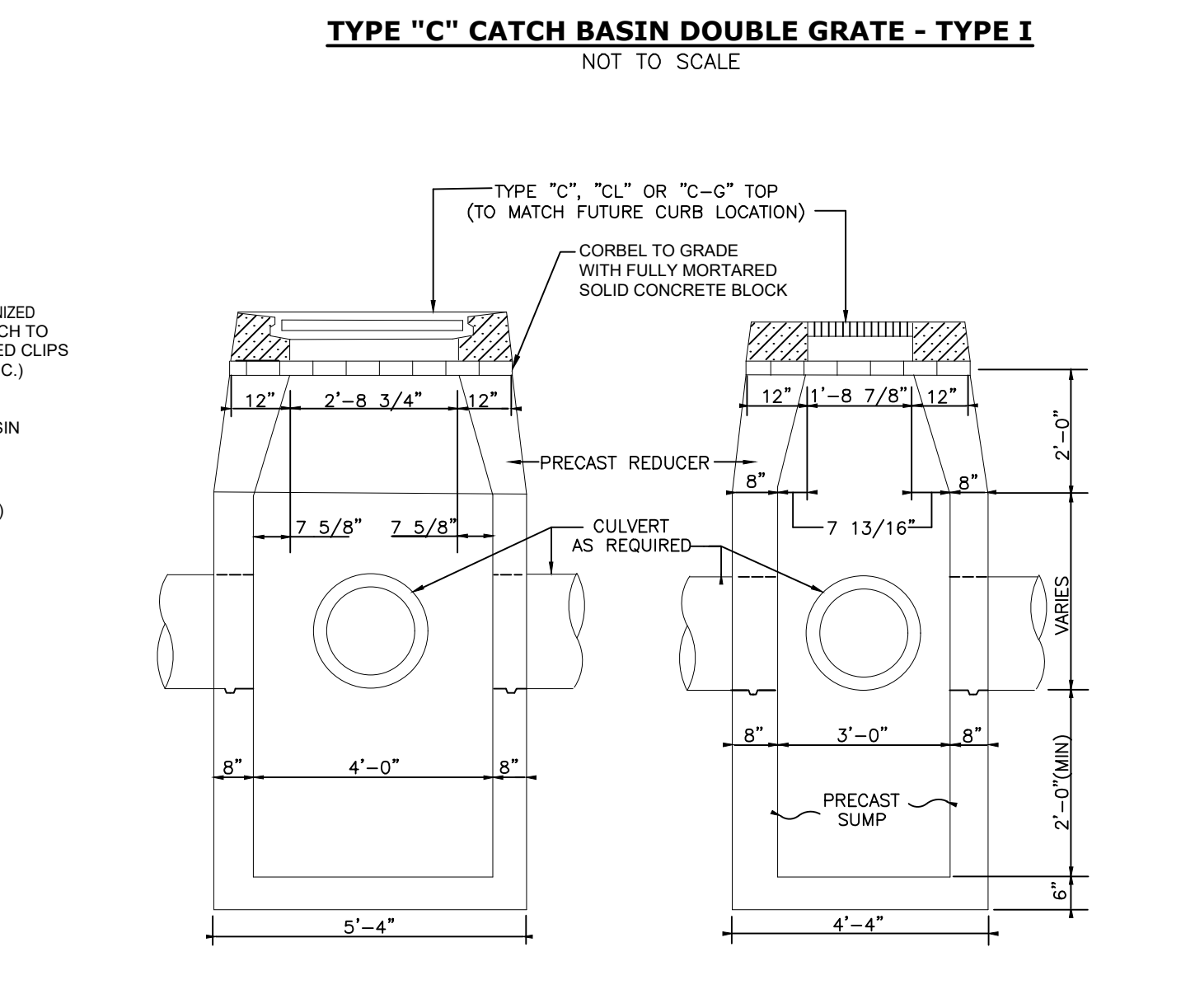
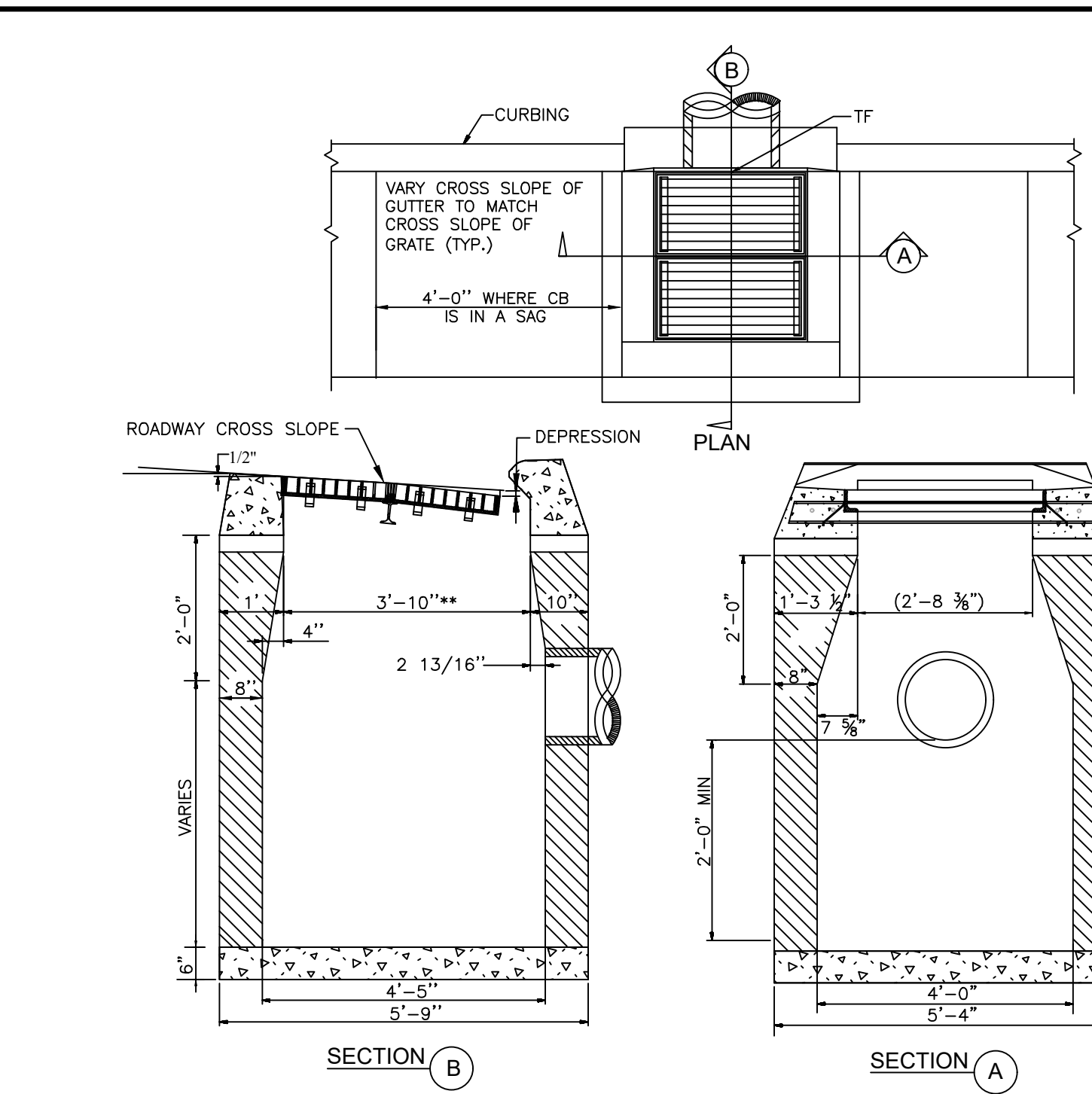
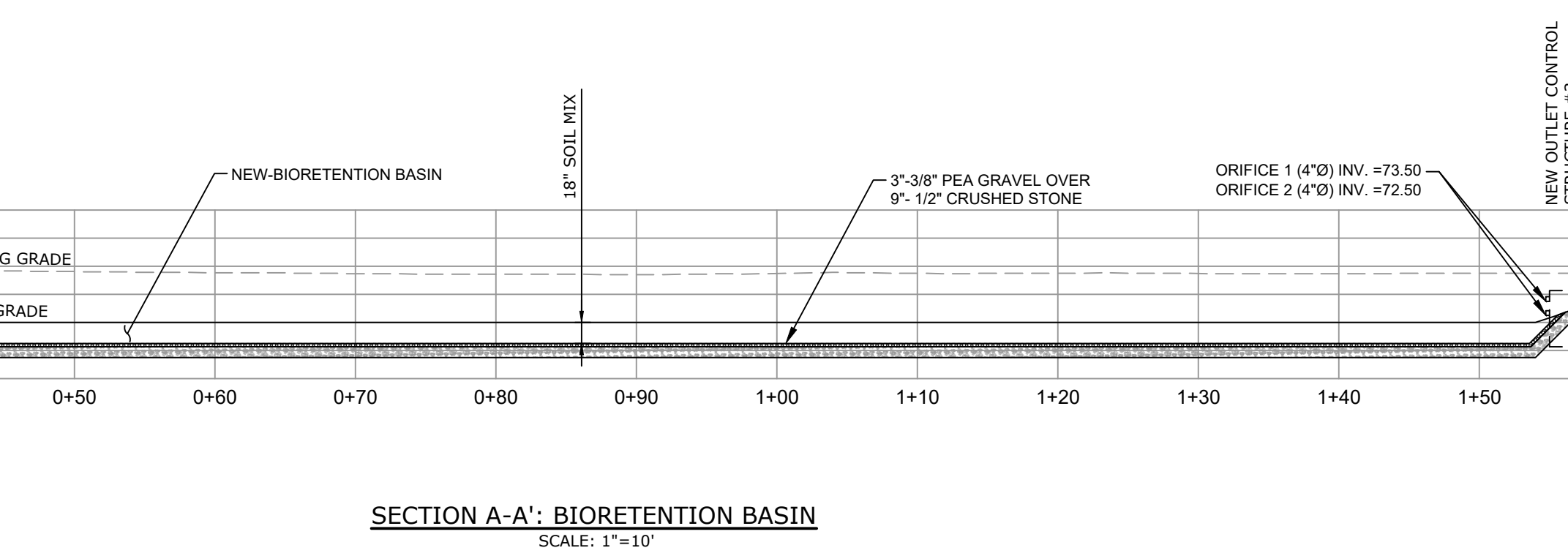
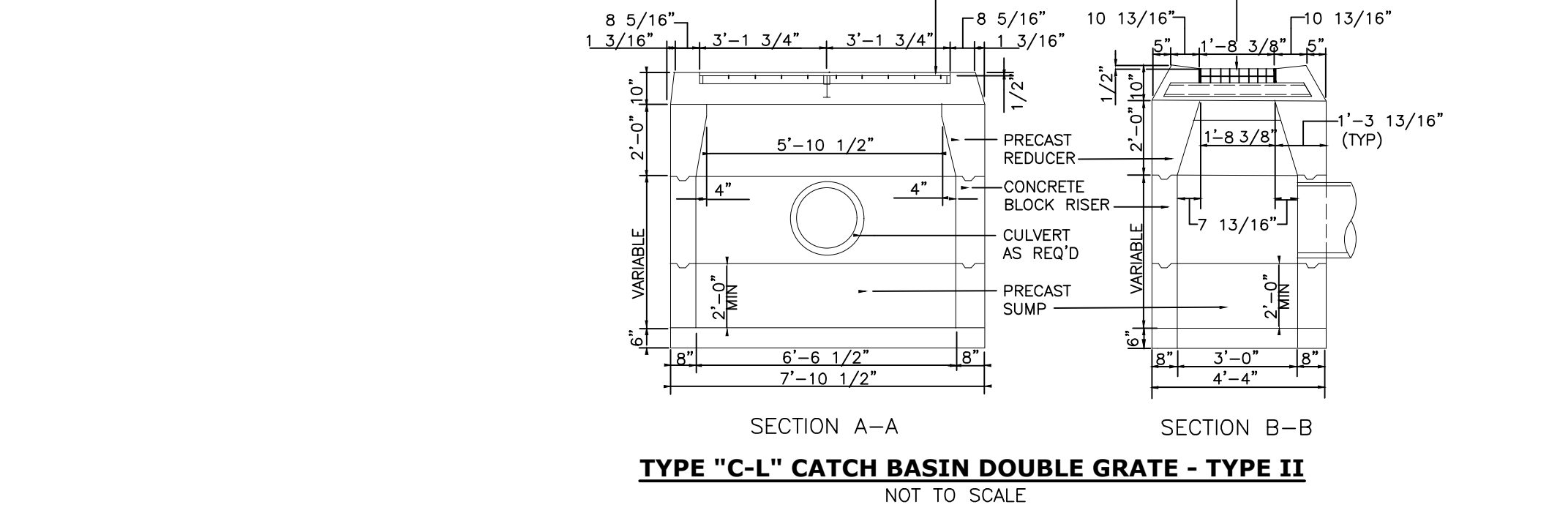
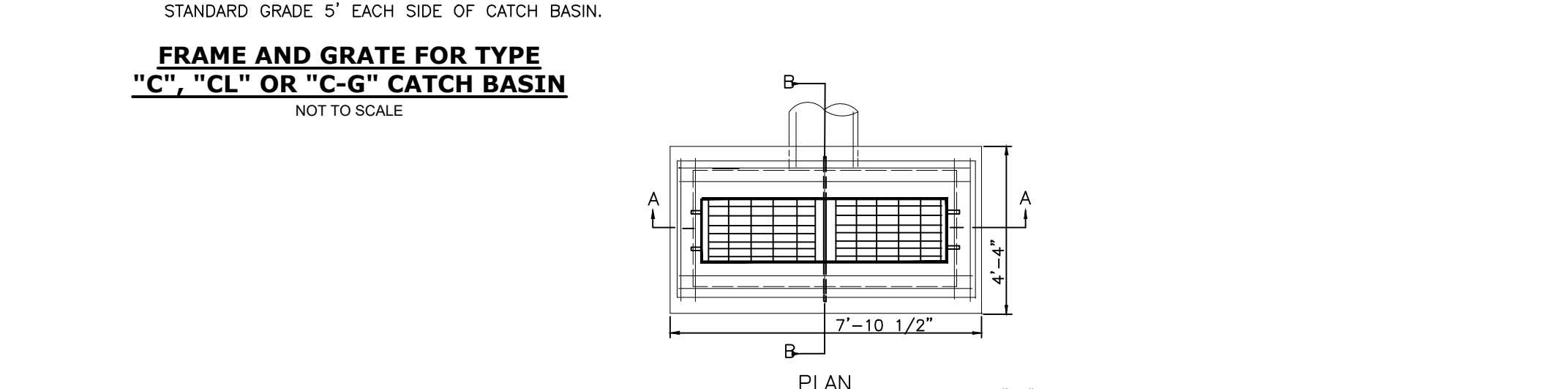
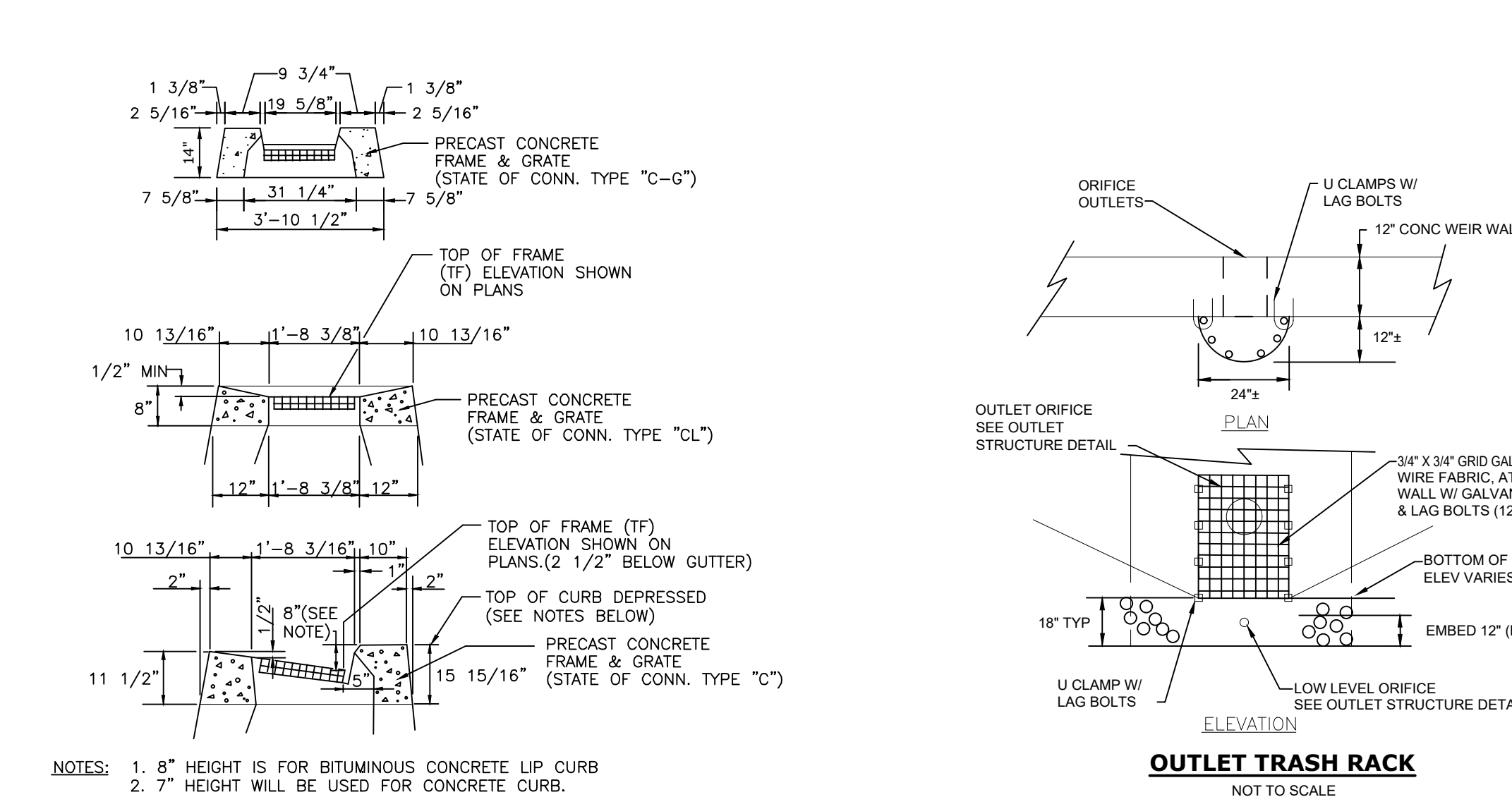
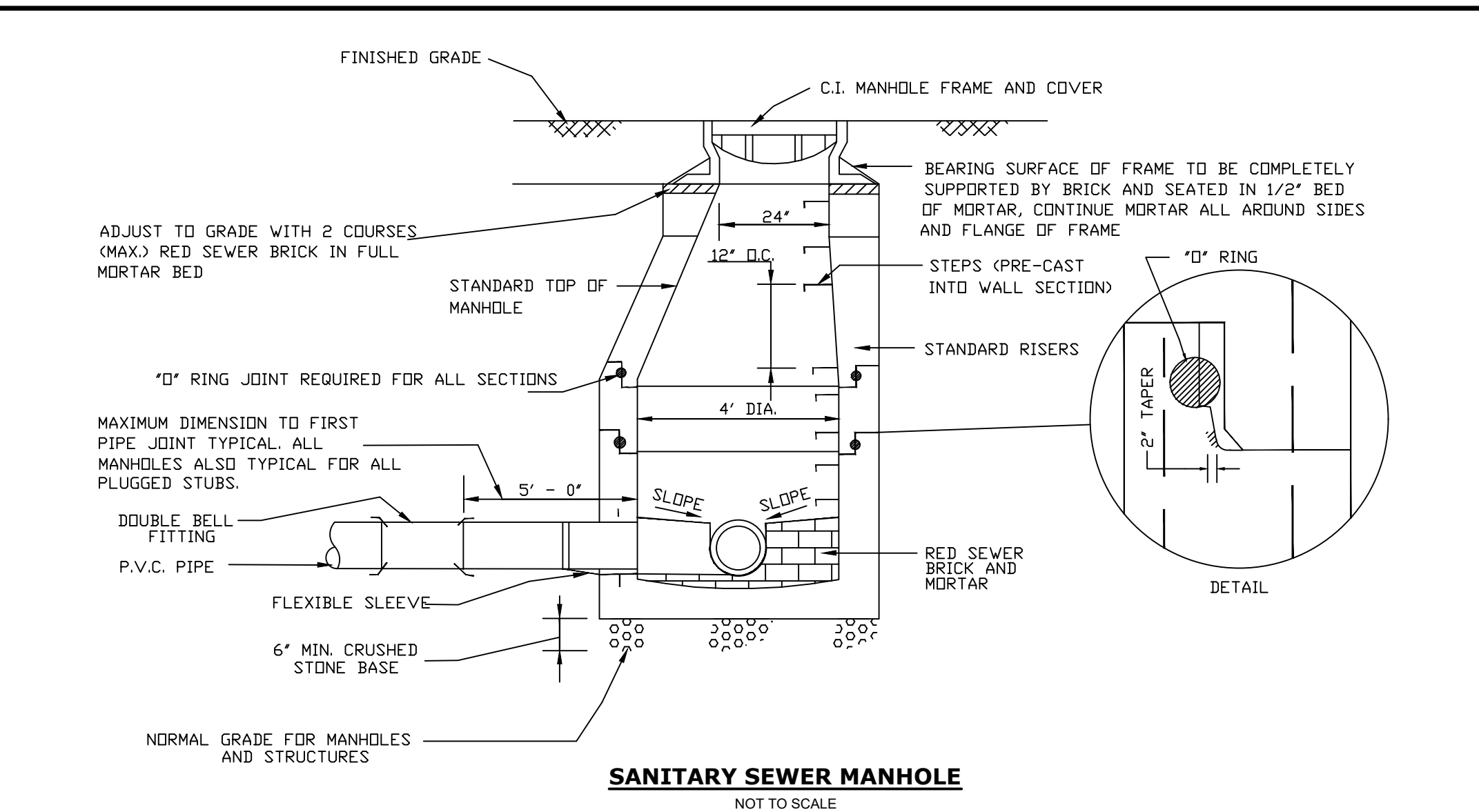
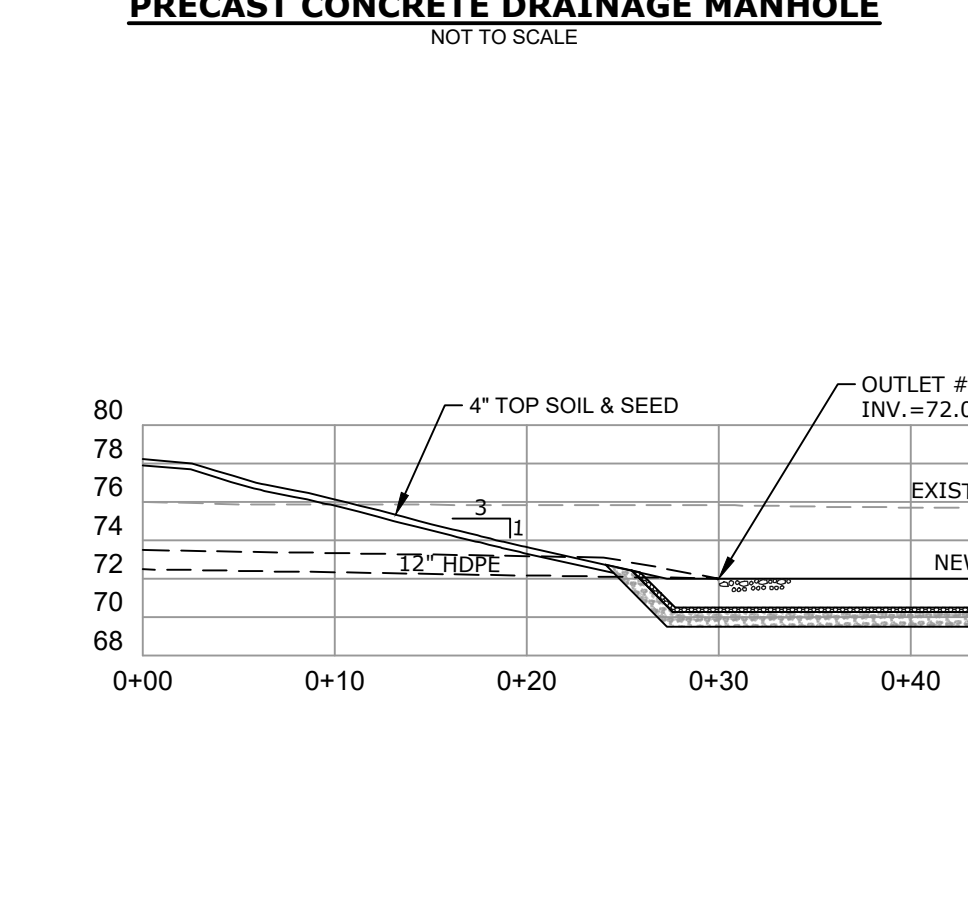
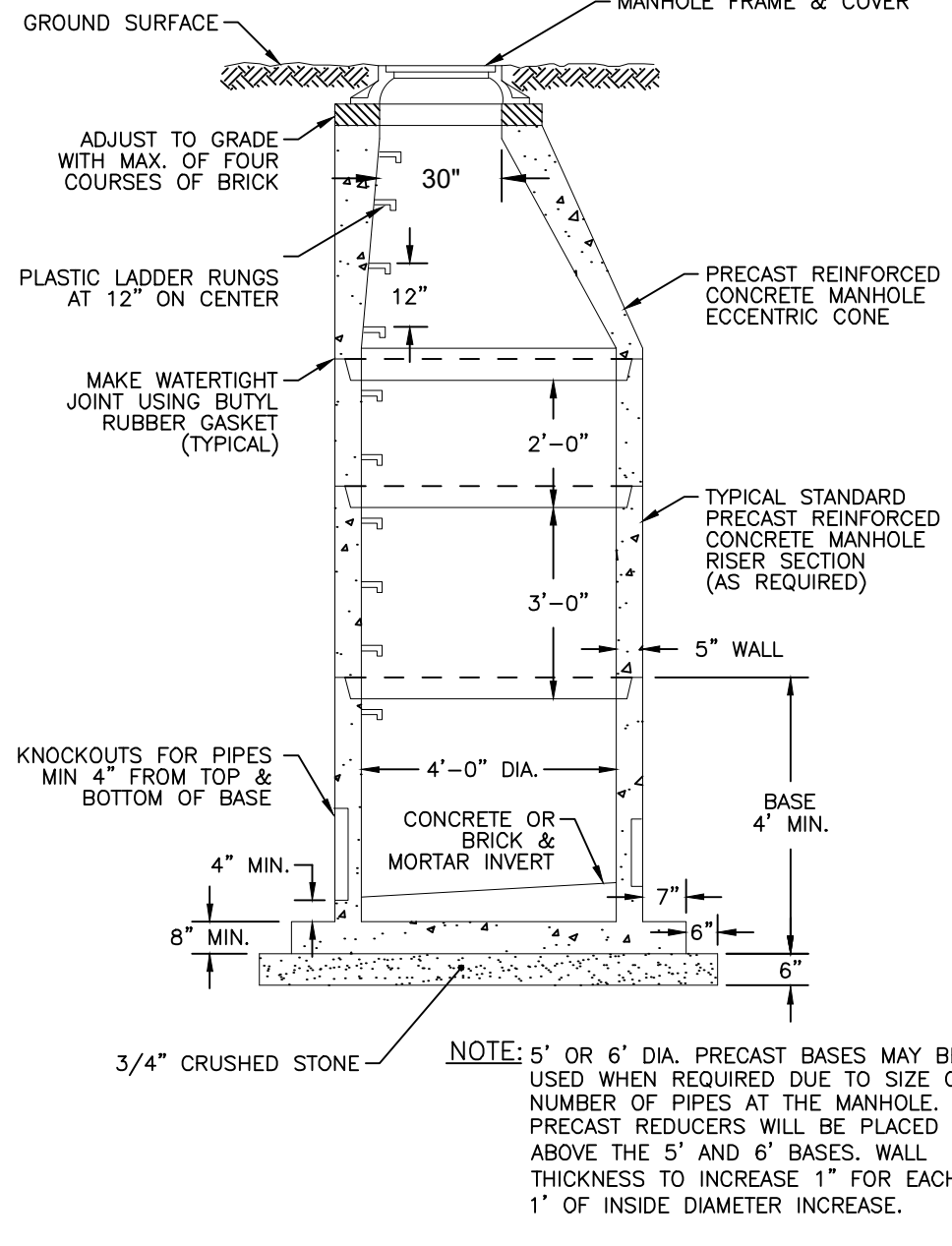
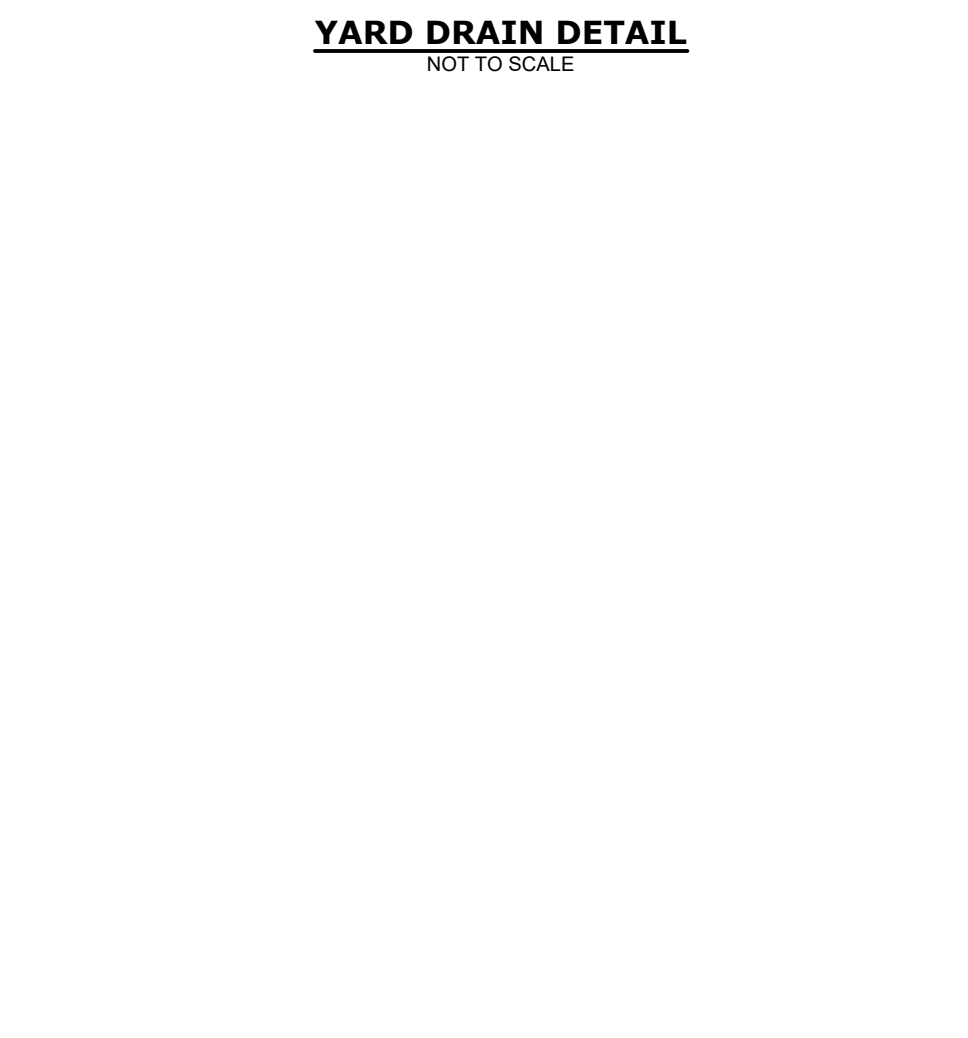
DESCRIPTION OF REVISION

DRAWING
19000079.11

SHEET NO. 12 NO. OF SHEETS 14



- NOTES:**
1. REINFORCING STEEL WELDED WIRE FABRIC CONFORMS TO LATEST ASTM SPECIFICATION A185.
 2. REINFORCING STEEL DEFORMED BARS CONFORM TO LATEST ASTM SPECIFICATION A615.
 3. CONCRETE COMPRESSIVE STRENGTH - 4000 PSI AT 28 DAYS.
 4. METHOD OF MANUFACTURE, WET CAST.
 5. SECTION IS MONOLITHIC.
 6. DESIGN LOAD: AASHTO H-20



INSTALLATION NOTES:

- ANY SUB-BASE BACKFILL DEPTH, AND/OR ANTI-FLOTATION PROVISIONS ARE SITE-SPECIFIC DESIGN CONSIDERATIONS AND SHALL BE SPECIFIED BY ENGINEER OF RECORD.
- CONTRACTOR TO PROVIDE EQUIPMENT WITH SUFFICIENT LIFTING AND REACH CAPACITY TO LIFT AND SET THE CDS MANHOLE STRUCTURE (LIFTING CLUTCHES PROVIDED).
- CONTRACTOR TO ADD JOINT SEALANT BETWEEN ALL STRUCTURE SECTIONS, AND ASSEMBLE STRUCTURE.
- CONTRACTOR TO PROVIDE, INSTALL, AND GROUT PIPES. MATCH PIPE INVERTS WITH ELEVATIONS SHOWN.
- CONTRACTOR TO TAKE APPROPRIATE MEASURES TO ASSURE UNIT IS WATER TIGHT, HOLDING WATER TO FLOWLINE INVERT MINIMUM. IT IS SUGGESTED THAT ALL JOINTS BELOW PIPE INVERTS ARE GROUTED.

INLINE CDS STRUCTURE TABLE

STRUCTURE ID	SYSTEM MODEL	MANHOLE I.D.	DIMENSION 'A'	DIMENSION 'B'	DIMENSION 'C'	DIMENSION 'D'	DIMENSION 'E'
CDS1, CDS4	CDS2020-5-C	60"	1'-9"	2'-0"	5'-3"	2'-7"	4'-0"
CDS2, CDS3	CDS1515-3-C	36"	1'-4"	2'-0"	4'-2"	1'-8"	4'-0"
CDS5	CDS3035-6-C	72"	1'-9"	2'-0"	6'-9"	4'-1"	4'-0"
CDS6	CDS2015-4-C	48"	1'-9"	2'-0"	4'-6"	2'-0"	4'-0"

INLINE CDS STANDARD DETAIL
NOT TO SCALE

APPROVED BY THE MONTVILLE INLAND WETLAND COMMISSION ON _____ DATE _____

APPROVED BY THE MONTVILLE PLANNING AND ZONING COMMISSION ON _____ DATE _____

CHAIRMAN/SECRETARY _____ DATE _____

CHAIRMAN/SECRETARY _____ DATE _____

STAMP

SCALE: NOT TO SCALE

COM. NO. 88VA3.01

DATE: 3/11/2021

DRAWN BY: BJM

APPROVED BY: PB

DATE: 3/11/2021

DETAILS

VILLAGE APARTMENTS - PHASE III
15 JEROME AVENUE, 82 JEROME ROAD AND 232 ROUTE 32, UNCASVILLE - MONTVILLE, CT

VILLAGE APARTMENTS LLC AND CONNECTICUT MULTIFAMILY EQUITIES II, LLC
1099 NORTH STREET, WHITE PLAINS, NY

DATE: 03/19/2021

DATE: 11/19/2021

DATE: 03/11/2021

REV. 1

DESCRIPTION OF REVISION

DRAWING

19000079.12

SHEET NO. 13 NO. OF SHEETS 14

PRE-FAB STUBS AT BOTTOM OF END CAP FOR PART NUMBERS ENDING WITH "B"
 PRE-FAB STUBS AT TOP OF END CAP FOR PART NUMBERS ENDING WITH "T"
 PRE-CORED END CAPS END WITH "PC"

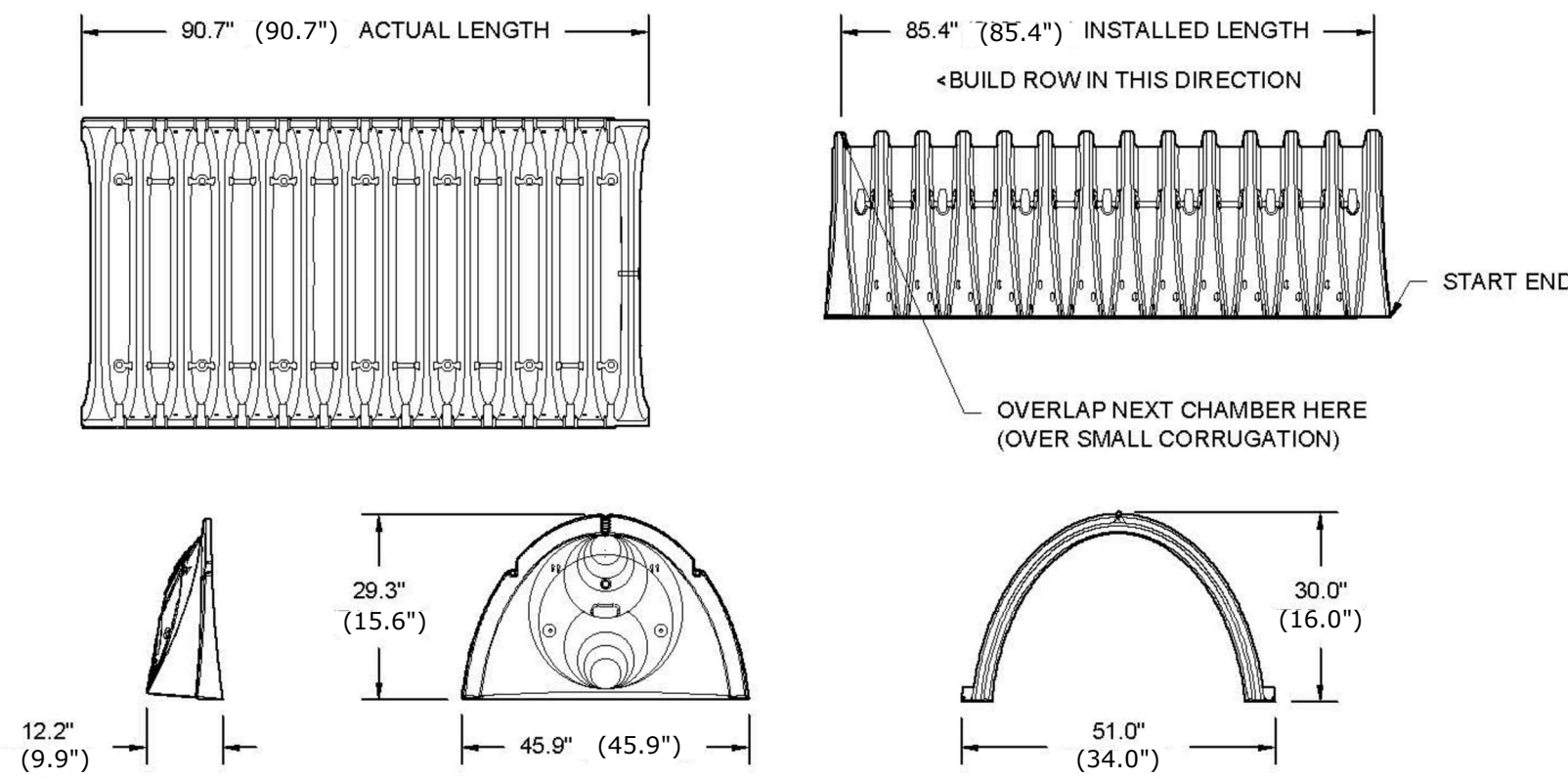
PART #	STUB	A	B	C
SC740EPE01T / SC740EPE01PC	6" (150 mm)	10.9" (277 mm)	18.5" (470 mm)	---
SC740EPE08B / SC740EPE08BPC	---	---	---	0.5" (13 mm)
SC740EPE08T / SC740EPE08TPC	8" (200 mm)	12.2" (310 mm)	16.5" (419 mm)	---
SC740EPE08B / SC740EPE08BPC	---	---	---	0.6" (15 mm)
SC740EPE10T / SC740EPE10TPC	10" (250 mm)	13.4" (340 mm)	14.5" (368 mm)	---
SC740EPE10B / SC740EPE10BPC	---	---	---	0.7" (18 mm)
SC740EPE12T / SC740EPE12TPC	12" (300 mm)	14.7" (373 mm)	12.5" (318 mm)	---
SC740EPE12B / SC740EPE12BPC	---	---	---	1.2" (30 mm)
SC740EPE15T / SC740EPE15TPC	15" (375 mm)	18.4" (467 mm)	9.0" (229 mm)	---
SC740EPE15B / SC740EPE15BPC	---	---	---	1.3" (33 mm)
SC740EPE18T / SC740EPE18TPC	18" (450 mm)	19.7" (500 mm)	5.0" (127 mm)	---
SC740EPE18B / SC740EPE18BPC	---	---	---	1.6" (41 mm)
SC740EPE24B*	24" (600 mm)	18.5" (470 mm)	---	0.1" (3 mm)

ALL STUBS, EXCEPT FOR THE SC740EPE24B ARE PLACED AT BOTTOM OF END CAP SUCH THAT THE OUTSIDE DIAMETER OF THE STUB IS FLUSH WITH THE BOTTOM OF THE END CAP. FOR ADDITIONAL INFORMATION CONTACT STORMTECH AT 1-888-892-2894.

* FOR THE SC740EPE24B THE 24" (600 mm) STUB LIES BELOW THE BOTTOM OF THE END CAP APPROXIMATELY 1.75" (44 mm). BACKFILL MATERIAL SHOULD BE REMOVED FROM BELOW THE N-12 STUB SO THAT THE FITTING SITS LEVEL.

NOTE: ALL DIMENSIONS ARE NOMINAL

STORMTECH SC-740 STUD LOCATION IN END CAPS
 NOT TO SCALE



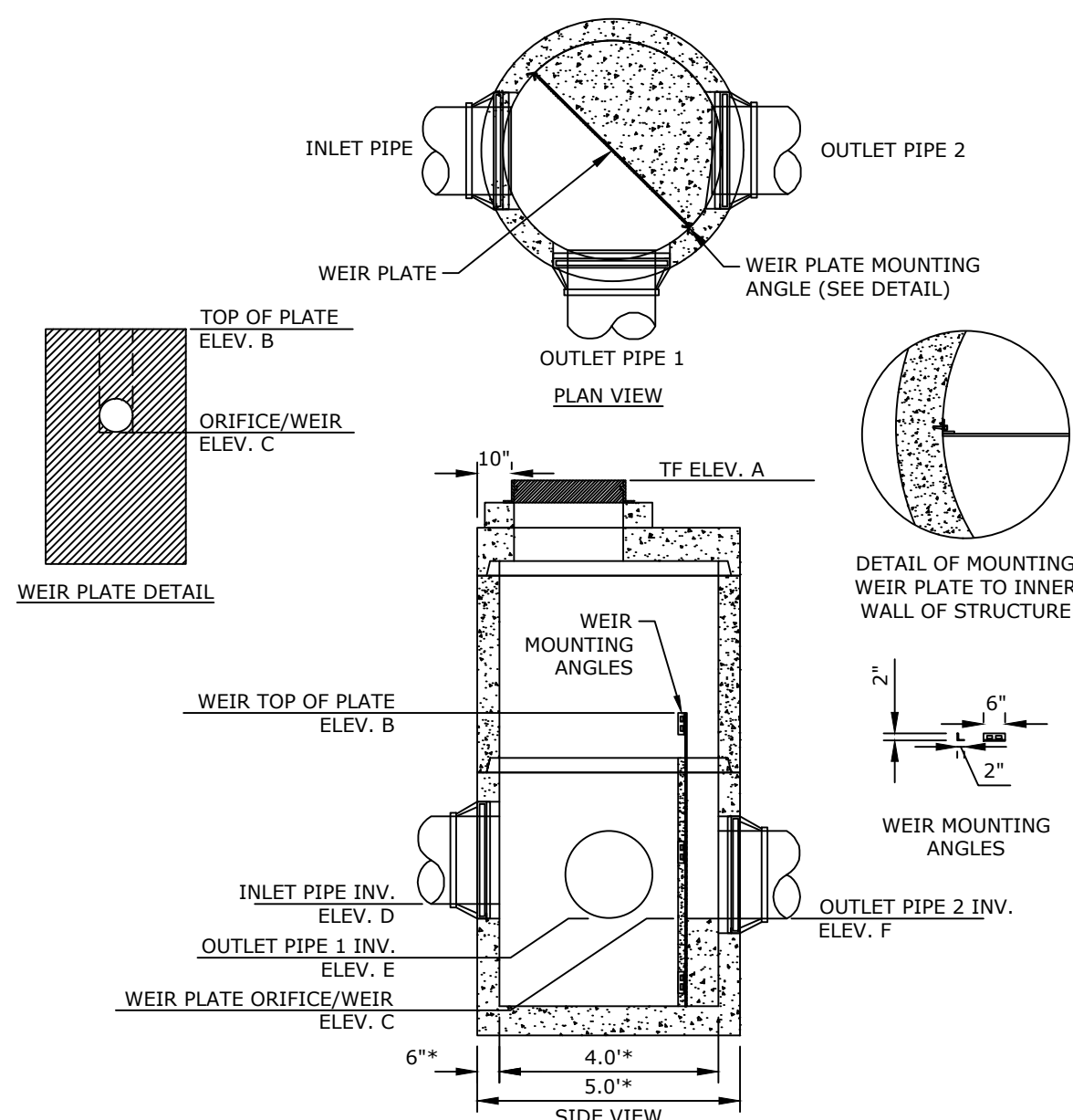
NOMINAL CHAMBER SPECIFICATIONS	51.0" X 30.0" X 85.4"	(34.0" X 16.0" X 85.4")
SIZE (W X H X INSTALLED LENGTH)	51.0" X 30.0" X 85.4"	(34.0" X 16.0" X 85.4")
CHAMBER STORAGE	45.9 CUBIC FEET	(14.7 FT ³)
MINIMUM INSTALLED STORAGE*	74.9 CUBIC FEET	(31.0 FT ³)
WEIGHT	75.0 lbs.	(34.0 LBS.)

* ASSUMES 6" (152 mm) STONE ABOVE, BELOW, AND BETWEEN CHAMBERS
 NOTE: DIMENSIONS ARE STORMTECH SC-740 WITH SC-310 SHOWN IN PARENTHESIS.

STORMTECH SC-740 & SC-310 TECHNICAL SPECIFICATION
 NOT TO SCALE

UNDERGROUND DETENTION/INFILTRATION ELEVATION SUMMARY TABLE										
STRUCTURE ID	CHAMBER TYPE	NUMBER OF CHAMBERS	TOP OF STONE ELEV.	TOP OF CHAMBER ELEV.	BOTTOM OF CHAMBER ELEV.	BOTTOM OF STONE ELEV.	INLET MANIFOLD SIZE	OUTLET MANIFOLD SIZE	INLET STUB INVERT ELEV.	OUTLET STUB INVERT ELEV.
UNDERGROUND DETENTION/INFILTRATION SYSTEM #1	SC-740	99 (IN 9 ROWS)	76.5	76.0	73.5	73.0	15"X12"	15"X12"	73.6(12'0")	73.6(12'0")
UNDERGROUND DETENTION/INFILTRATION SYSTEM #2	SC-740	234 (IN 18 ROWS)	76.0	75.5	73.0	72.5	24"X12"	24"X12"	73.10(12'0")	73.10(12'0")
UNDERGROUND DETENTION/INFILTRATION SYSTEM #3	SC-310	170 (IN 17 ROWS)	72.83	72.33	71.0	70.5	15"X12"	15"X12"	71.08(12'0")	71.08(12'0")

UNDERGROUND DETENTION/INFILTRATION ELEVATION SUMMARY TABLE
 NOT TO SCALE



- NOTES:
- STEEL REINFORCEMENT SHALL CONFORM TO LATEST ASTM SPECIFICATIONS: ASTM A-615, GRADE 60 BLACK DEFORMED BARS; ASTM A-185 WELDED WIRE FABRIC; 0.12 SQ. IN. LINEAL FT. AND 0.12 SQ. IN. (BOTH WAYS) BASE BOTTOM
 - CONCRETE: Fc = 4,000 PSI @ 28 DAYS MINIMUM, TYPE III CEMENT
 - BUTYL RUBBER JOINT SEALANT PROVIDED CONFORMS TO ASTM C-990 AND FEDERAL SPEC SS-5-210A
 - ONE POUR MONOLITHIC BASE SECTION.

OVERFLOW CONTROL STRUCTURE ELEVATION SUMMARY TABLE						
STRUCTURE ID	TOP OF FRAME ELEV. A	TOP OF WEIR PLATE ELEV. B	LOW-FLOW ORIFICE/WEIR INVERT ELEV. C	INLET PIPE INVERT ELEV. D	OUTLET PIPE 1 INVERT ELEV. E	OUTLET PIPE 2 INVERT ELEV. F
ICS1	78.3	74.75	-	74.70 (18'0")	73.5 (24'0"; ISOLATOR ROW)	73.5 (15'0"; INLET MANIFOLD)
ICS2	80.3	74.75	-	76.15 (12'0")	73.5 (24'0"; ISOLATOR ROW)	73.5 (15'0"; INLET MANIFOLD)
ICS3	78.0	74.25	-	73.65 (18'0")	73.0 (24'0"; ISOLATOR ROW)	73.0 (24'0"; INLET MANIFOLD)
ICS4	81.7	74.25	-	73.0 (24'0")	73.0 (24'0"; ISOLATOR ROW)	73.0 (24'0"; INLET MANIFOLD)
ICS5	77.5	73.25	-	71.90 (15'0")	71.08 (12'0"; ISOLATOR ROW)	71.0 (15'0"; INLET MANIFOLD)
ICS6	77.2	73.25	-	72.40 (15'0")	71.08 (12'0"; ISOLATOR ROW)	71.0 (15'0"; INLET MANIFOLD)
OCS1	80.1	76.0	74.75 (4"Ø ORIFICE)	73.50(15'0"; N)	-	73.5 (12'0")
OCS2	79.6	75.5	73.75 (4"Ø ORIFICE)	73.60(12'0"; E)	-	73.0 (15'0")
OCS4	78.45	-	-	71.0(15'0"; E & W)	-	71.1 (18'0")
				71.08(12'0"; S)	-	-

INLET CONTROL STRUCTURE (ICS) AND OUTLET CONTROL STRUCTURE (OCS)
 NOT TO SCALE

STUBS AT BOTTOM OF END CAP FOR PART NUMBERS ENDING WITH "B"
 STUBS AT TOP OF END CAP FOR PART NUMBERS ENDING WITH "T"

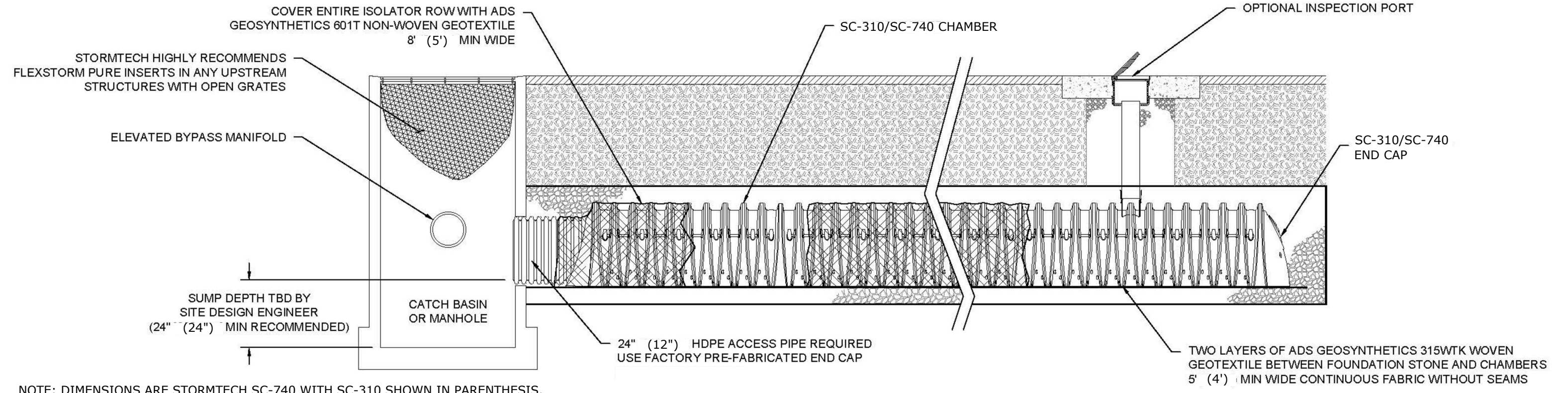
PART #	STUB	A	B	C
SC310EPE01T / SC310EPE01PC	6" (150 mm)	9.6" (244 mm)	5.8" (147 mm)	---
SC310EPE08B / SC310EPE08BPC	---	---	---	0.6" (15 mm)
SC310EPE08T / SC310EPE08TPC	8" (200 mm)	11.9" (302 mm)	3.5" (89 mm)	---
SC310EPE08B / SC310EPE08BPC	---	---	---	0.6" (15 mm)
SC310EPE10T / SC310EPE10TPC	10" (250 mm)	12.7" (323 mm)	1.4" (36 mm)	---
SC310EPE10B / SC310EPE10BPC	---	---	---	0.7" (18 mm)
SC310EPE12B	12" (300 mm)	13.5" (343 mm)	---	0.9" (23 mm)

ALL STUBS, EXCEPT FOR THE SC310EPE12B ARE PLACED AT BOTTOM OF END CAP SUCH THAT THE OUTSIDE DIAMETER OF THE STUB IS FLUSH WITH THE BOTTOM OF THE END CAP. FOR ADDITIONAL INFORMATION CONTACT STORMTECH AT 1-888-892-2894.

* FOR THE SC310EPE12B THE 12" (300 mm) STUB LIES BELOW THE BOTTOM OF THE END CAP APPROXIMATELY 0.25" (6 mm). BACKFILL MATERIAL SHOULD BE REMOVED FROM BELOW THE N-12 STUB SO THAT THE FITTING SITS LEVEL.

NOTE: ALL DIMENSIONS ARE NOMINAL

STORMTECH SC-310 STUD LOCATION IN END CAPS
 NOT TO SCALE



NOTE: DIMENSIONS ARE STORMTECH SC-740 WITH SC-310 SHOWN IN PARENTHESIS.

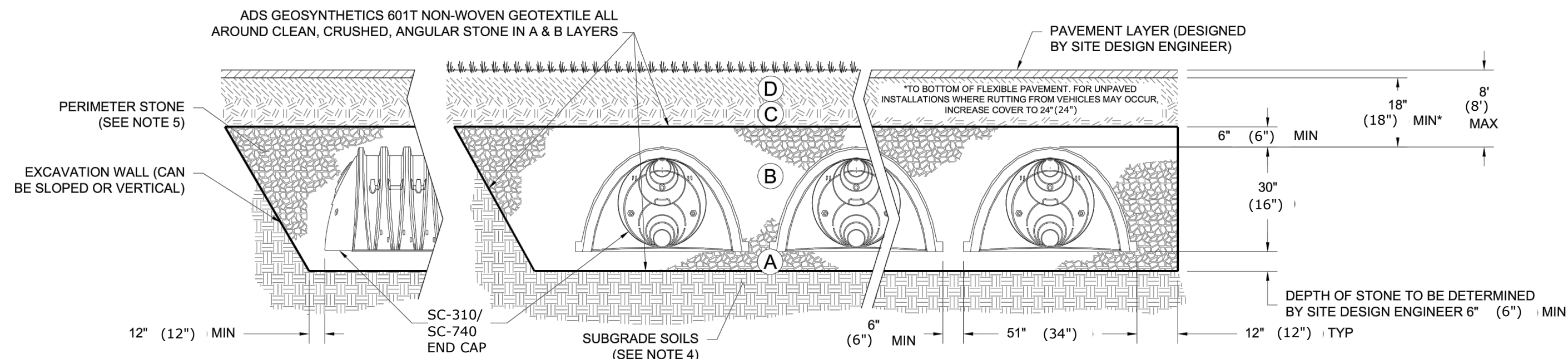
STORMTECH SC-740 & SC-310 ISOLATOR ROW DETAIL
 NOT TO SCALE

ACCEPTABLE FILL MATERIALS: STORMTECH SC-740 CHAMBER SYSTEMS

MATERIAL LOCATION	DESCRIPTION	AASHTO MATERIAL CLASSIFICATIONS	COMPACTION / DENSITY REQUIREMENT
D	FINAL FILL: FILL MATERIAL FOR LAYER 'D' STARTS FROM THE TOP OF THE 'C' LAYER TO THE BOTTOM OF FLEXIBLE PAVEMENT OR UNPAVED FINISHED GRADE ABOVE. NOTE THAT PAVEMENT SUBBASE MAY BE PART OF THE 'D' LAYER.	ANY SOIL/ROCK MATERIALS, NATIVE SOILS, OR PER ENGINEER'S PLANS. CHECK PLANS FOR PAVEMENT SUBGRADE REQUIREMENTS.	N/A
C	INITIAL FILL: FILL MATERIAL FOR LAYER 'C' STARTS FROM THE TOP OF THE EMBEDMENT STONE ('B' LAYER) TO 18" (450 mm) ABOVE THE TOP OF THE CHAMBER. NOTE THAT PAVEMENT SUBBASE MAY BE A PART OF THE 'C' LAYER.	GRANULAR WELL-GRADED SOIL/AGGREGATE MIXTURES, <35% FINES OR PROCESSED AGGREGATE. MOST PAVEMENT SUBBASE MATERIALS CAN BE USED IN LIEU OF THIS LAYER.	AASHTO M145 ¹ A-1, A-2.4, A-3 OR AASHTO M43 ² 3, 357, 4, 467, 5, 56, 57, 6, 67, 68, 7, 78, 8, 89, 9, 10
B	EMBEDMENT STONE: FILL SURROUNDING THE CHAMBERS FROM THE FOUNDATION STONE ('A' LAYER) TO THE 'C' LAYER ABOVE.	CLEAN, CRUSHED, ANGULAR STONE	AASHTO M43 ³ 3, 357, 4, 467, 5, 56, 57
A	FOUNDATION STONE: FILL BELOW CHAMBERS FROM THE SUBGRADE UP TO THE FOOT (BOTTOM) OF THE CHAMBER.	CLEAN, CRUSHED, ANGULAR STONE	AASHTO M43 ³ 3, 357, 4, 467, 5, 56, 57

PLEASE NOTE:

- THE LISTED AASHTO DESIGNATIONS ARE FOR GRADATIONS ONLY. THE STONE MUST ALSO BE CLEAN, CRUSHED, ANGULAR. FOR EXAMPLE, A SPECIFICATION FOR #4 STONE WOULD STATE: "CLEAN, CRUSHED, ANGULAR NO. 4 (AASHTO M43) STONE".
- STORMTECH COMPACTION REQUIREMENTS ARE MET FOR 'A' LOCATION MATERIALS WHEN PLACED AND COMPACTED IN 6" (150 mm) (MAX) LIFTS USING TWO FULL COVERAGES WITH A VIBRATORY COMPACTOR.
- WHERE INFILTRATION SURFACES MAY BE COMPROMISED BY COMPACTION, FOR STANDARD DESIGN LOAD CONDITIONS, A FLAT SURFACE MAY BE ACHIEVED BY RAKING OR DRAGGING WITHOUT COMPACTION EQUIPMENT. FOR SPECIAL LOAD DESIGNS, CONTACT STORMTECH FOR COMPACTION REQUIREMENTS.
- ONCE LAYER 'C' IS PLACED, ANY SOIL/MATERIAL CAN BE PLACED IN LAYER 'D' UP TO THE FINISHED GRADE. MOST PAVEMENT SUBBASE SOILS CAN BE USED TO REPLACE THE MATERIAL REQUIREMENTS OF LAYER 'C' OR 'D' AT THE SITE DESIGN ENGINEER'S DISCRETION.



NOTES:

- CHAMBERS SHALL MEET THE REQUIREMENTS OF ASTM F2418-16a, "STANDARD SPECIFICATION FOR POLYPROPYLENE (PP) CORRUGATED WALL STORMWATER COLLECTION CHAMBERS".
- SC-740/310 CHAMBERS SHALL BE DESIGNED IN ACCORDANCE WITH ASTM F2787 "STANDARD PRACTICE FOR STRUCTURAL DESIGN OF THERMOPLASTIC CORRUGATED WALL STORMWATER COLLECTION CHAMBERS".
- THE SITE DESIGN ENGINEER IS RESPONSIBLE FOR ASSESSING THE BEARING RESISTANCE (ALLOWABLE BEARING CAPACITY) OF THE SUBGRADE SOILS AND THE DEPTH OF FOUNDATION STONE WITH CONSIDERATION FOR THE RANGE OF EXPECTED SOIL MOISTURE CONDITIONS.
- PERIMETER STONE MUST BE EXTENDED HORIZONTALLY TO THE EXCAVATION WALL FOR BOTH VERTICAL AND SLOPED EXCAVATION WALLS.
- REQUIREMENTS FOR HANDLING AND INSTALLATION:
 - TO MAINTAIN THE WIDTH OF CHAMBERS DURING SHIPPING AND HANDLING, CHAMBERS SHALL HAVE INTEGRAL, INTERLOCKING STACKING LUGS.
 - TO ENSURE A SECURE JOINT DURING INSTALLATION AND BACKFILL, THE HEIGHT OF THE CHAMBER JOINT SHALL NOT BE LESS THAN 2".
 - TO ENSURE THE INTEGRITY OF THE ARCH SHAPE DURING INSTALLATION, a) THE ARCH STIFFNESS CONSTANT AS DEFINED IN SECTION 6.2.8 OF ASTM F2418 SHALL BE GREATER THAN OR EQUAL TO 550* LBS/IN. (AND b) TO RESIST CHAMBER DEFORMATION DURING INSTALLATION AT ELEVATED TEMPERATURES (ABOVE 73° F / 23° C), CHAMBERS SHALL BE PRODUCED FROM REFLECTIVE GOLD OR YELLOW COLORS.

*ARCH STIFFNESS CONSTANT SHALL BE GREATER THAN OR EQUAL TO 550 LBS/IN. FOR SC-740 CHAMBERS AND 400 LBS/IN. FOR SC-310 CHAMBERS.

ACCEPTABLE FILL MATERIALS: STORMTECH SC-740 & SC-310 CHAMBER SYSTEMS
 NOT TO SCALE

APPROVED BY THE MONTVILLE INLAND WETLAND COMMISSION ON _____ DATE _____

CHAIRMAN/SECRETARY _____ DATE _____

APPROVED BY THE MONTVILLE PLANNING AND ZONING COMMISSION ON _____ DATE _____

CHAIRMAN/SECRETARY _____ DATE _____

STAMP

SCALE: NOT TO SCALE

COM. NO. 88VA3.01

DATE: 3/11/2021

DRAWN BY: BJM

APPROVED BY: PB

DATE: 3/11/2021

DETAILS

VILLAGE APARTMENTS - PHASE III
 15 JEROME AVENUE, 82 JEROME ROAD AND 232 ROUTE 32, UNCASVILLE - MONTVILLE, CT

VILLAGE APARTMENTS LLC AND CONNECTICUT MULTIFAMILY EQUITIES II, LLC
 1099 NORTH STREET, WHITE PLAINS, NY

DRAWING: 19000079.13

SHEET NO. 14 NO. OF SHEETS 14

REVISIONS PER TOWN AND THIRD PARTY REVIEW COMMENTS

NO.	DATE	DESCRIPTION OF REVISION
1	11/19/2021	IWC AND PAC SUBMISSION
2	03/19/2022	REV

SWM 11/19/2021

SWM 03/19/2022

DATE