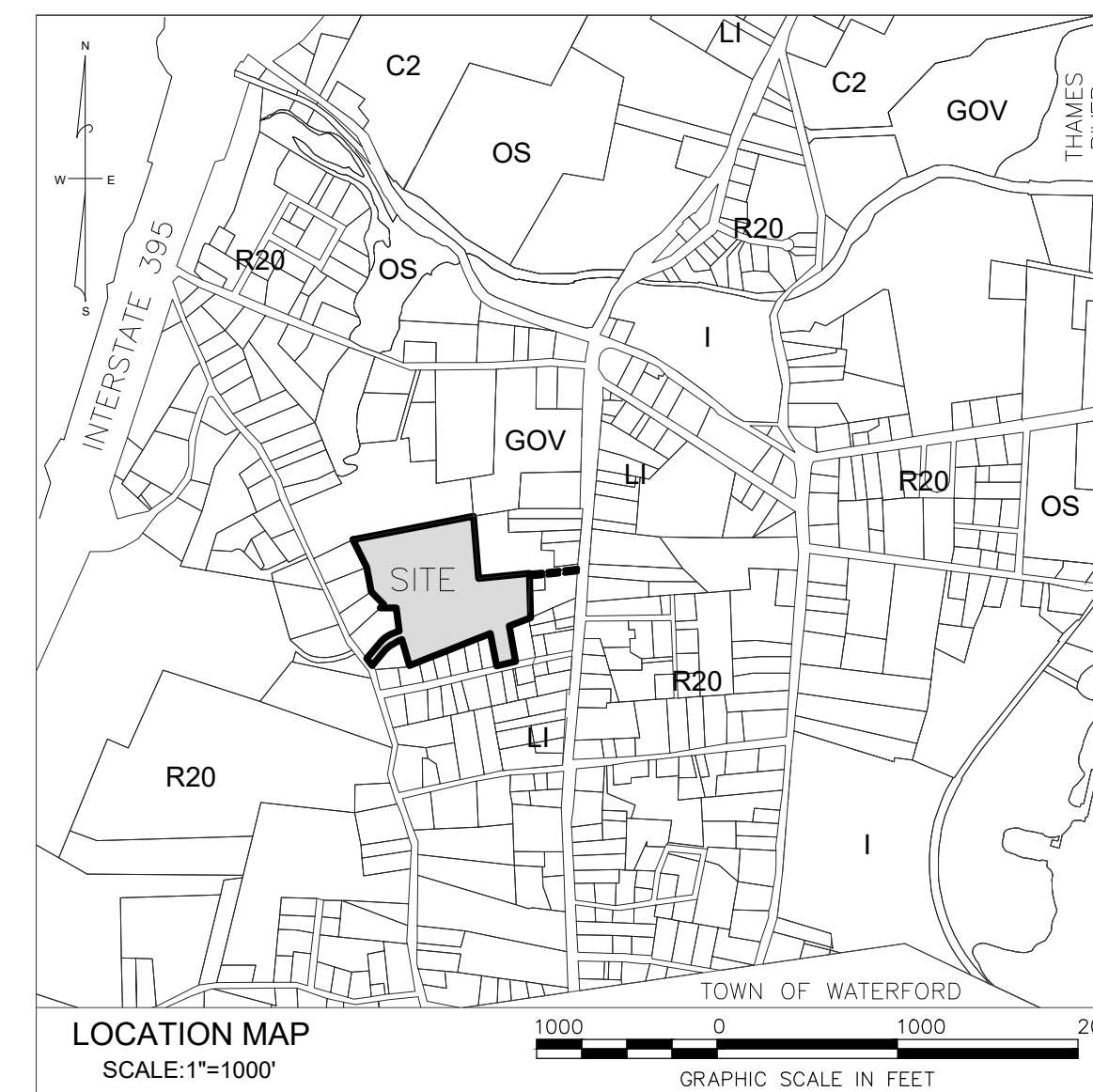


# SITE DEVELOPMENT PLAN VILLAGE APARTMENTS - PHASE III NEW MULTIFAMILY APARTMENT BUILDINGS

15 JEROME AVENUE, 82 JEROME ROAD AND 232 ROUTE 32,  
UNCASVILLE-MONTVILLE, CONNECTICUT

DATE: MARCH 11, 2021  
REVISED: NOVEMBER 15, 2021  
REVISED: MARCH 15, 2022  
REVISED: MAY 16, 2022

**PROPERTY OWNER/APPLICANT:  
VILLAGE APARTMENTS LLC & CONNECTICUT  
MULTIFAMILY EQUITIES II, LLC  
1099 NORTH STREET,  
WHITE PLAINS, NY 10605**



INDEX TO SHEETS	
TITLE	SHEET NO.
COVER SHEET	1
LEGEND AND NOTES	2
EXISTING CONDITIONS SURVEY	3
DEMOLITION PLAN	4
SITE LAYOUT AND UTILITIES PLAN	5
GRADING AND DRAINAGE PLAN	6
EROSION & SEDIMENT CONTROL PLAN	7
SITE PLANTING AND LIGHTING PLAN	8
SITE PHOTOMETRIC PLAN	9
WETLAND MITIGATION & STORMWATER BASIN PLANTING PLAN	10
DETAILS	11 - 14

Prepared By:

**Loureiro** Engineering Associates, Inc.  
100 Fort Hill Road • Groton, Connecticut 06340  
Phone: 860-448-0400 • Fax: 860-448-0899  
An Employee Owned Company • www.Loureiro.com  
Engineering • Construction • EH&S • Energy  
Waste • Facility Services • Laboratory

TO THE BEST OF MY KNOWLEDGE AND BELIEF, THIS MAP IS  
SUBSTANTIALLY CORRECT AS NOTED IN SHEET 2, SURVEY NOTES.

ARTHUR H. HAYWARD, JR. PLS #12052 DATE

I HEREBY CERTIFY THAT I HAVE MARKED THE LIMITS OF THE INLAND  
WETLANDS ON THE SITE SHOWN HEREON.

*James Conner*  
CERTIFIED SOILS SCIENTIST

2/16/2021  
DATE

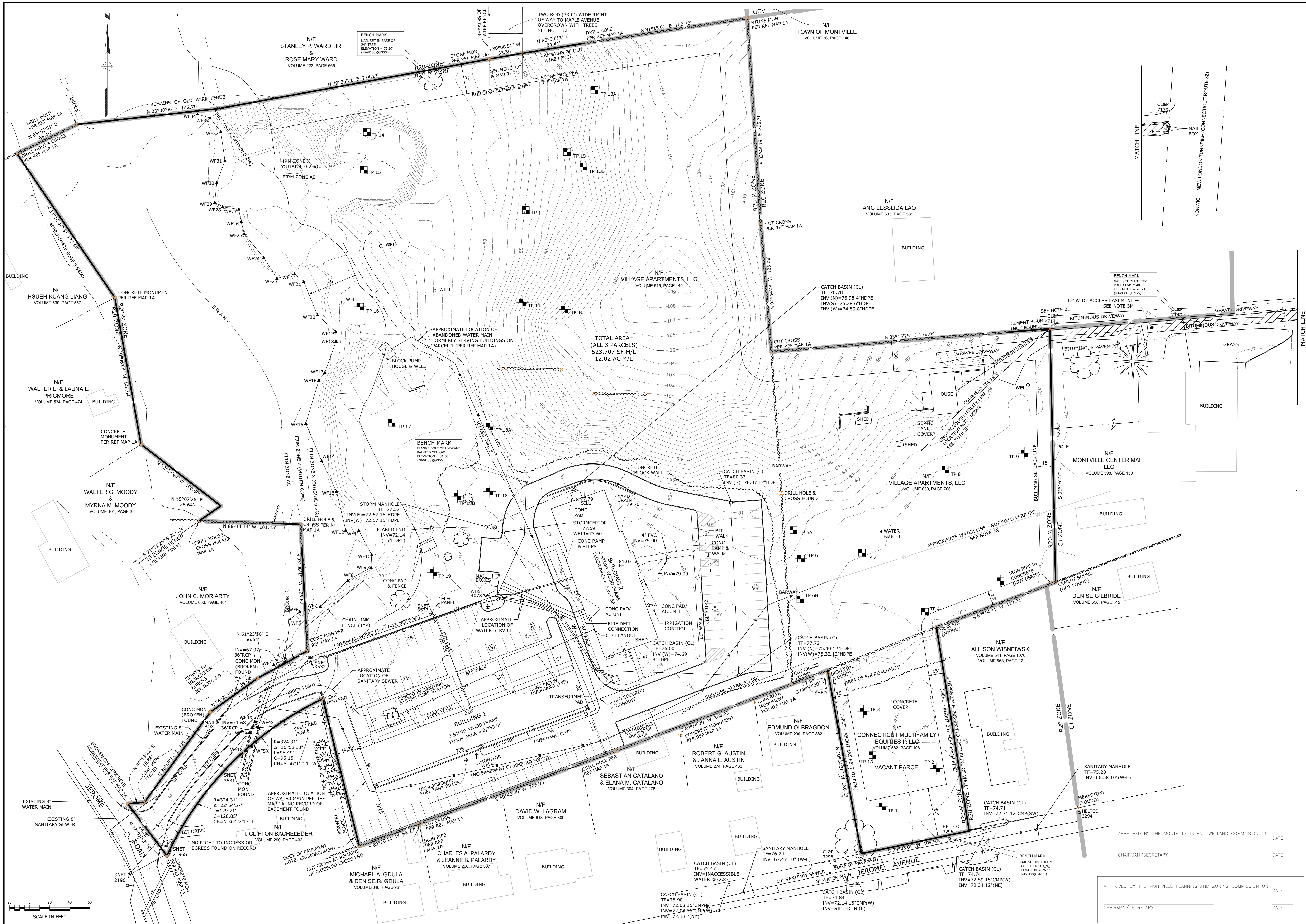
APPROVED BY THE MONTVILLE INLAND WETLAND COMMISSION ON \_\_\_\_\_ DATE \_\_\_\_\_

CHAIRMAN/SECRETARY \_\_\_\_\_ DATE \_\_\_\_\_

APPROVED BY THE MONTVILLE PLANNING AND ZONING COMMISSION ON \_\_\_\_\_ DATE \_\_\_\_\_

CHAIRMAN/SECRETARY \_\_\_\_\_ DATE \_\_\_\_\_





NO.	DATE	DESCRIPTION OF REVISION
3	05/16/2022	REVISIONS PER TOWN AND THIRD PARTY REVIEW COMMENTS
2	03/15/2022	REVISIONS PER TOWN AND THIRD PARTY REVIEW COMMENTS
1	11/15/2021	TWC AND P&Z SUBMISSION
		REV.

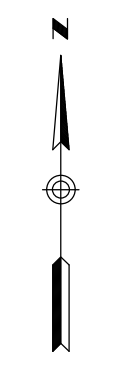
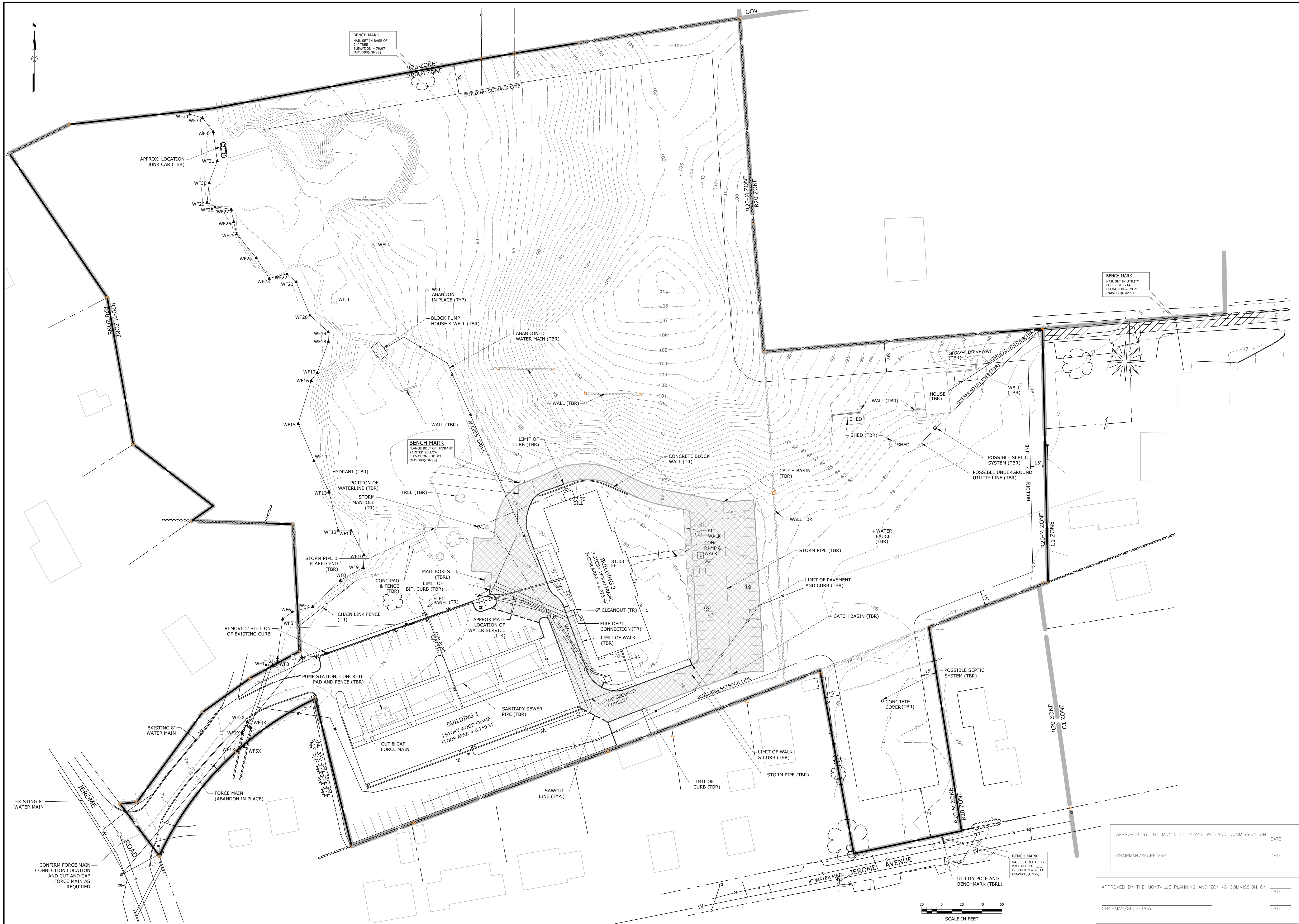
  

SCALE	1" = 40'
CORN. NO.	88VA9 01
DRAWN BY	JDH
DATE	3/11/2021
APPROVED BY	JDH
DATE	3/11/2021

<b>PROPERTY SURVEY AND EXISTING CONDITIONS PLAN</b> <b>PROPERTY OF VILLAGE APARTMENTS, LLC</b> <b>82 JEROME ROAD AND 232 ROUTE 32</b> <b>AND CONNECTICUT MULTIFAMILY EQUITIES II, LLC</b> <b>15 JEROME AVENUE</b> <b>UNCASVILLE - MONTVILLE, CONNECTICUT</b>	
APPROVED BY THE MONTVILLE INLAND WETLAND COMMISSION ON _____ DATE _____ CHAIRMAN/SECRETARY _____ DATE _____	APPROVED BY THE MONTVILLE PLANNING AND ZONING COMMISSION ON _____ DATE _____ CHAIRMAN/SECRETARY _____ DATE _____
DRAWING <b>19000079.04</b>	
SHEET NO. 3	NO. OF SHEETS 14

**Loureiro**  
 Engineering & Construction • Survey • Energy  
 Water • Facility Services • Laboratory  
 Loureiro Engineering Associates, Inc.  
 1000 Main Street, Suite 200  
 Uncasville, CT 06252  
 Phone: 860-448-0404 • Fax: 860-448-0899  
 An Employee Owned Company • www.loureiro.com  
 © Loureiro Engineering Associates, Inc. All rights reserved 2019



BENCH MARK  
NAIL SET IN BASE OF  
24" TREE  
ELEVATION = 79.97  
(NAVD8)(GNSS)

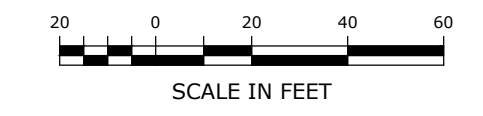
BENCH MARK  
NAIL SET IN UTILITY  
POLE CL#P 7140  
ELEVATION = 78.21  
(NAVD8)(GNSS)

BENCH MARK  
FLANGE BOLT OF HYDRANT  
PAINTED YELLOW  
ELEVATION = 81.03  
(NAVD8)(GNSS)

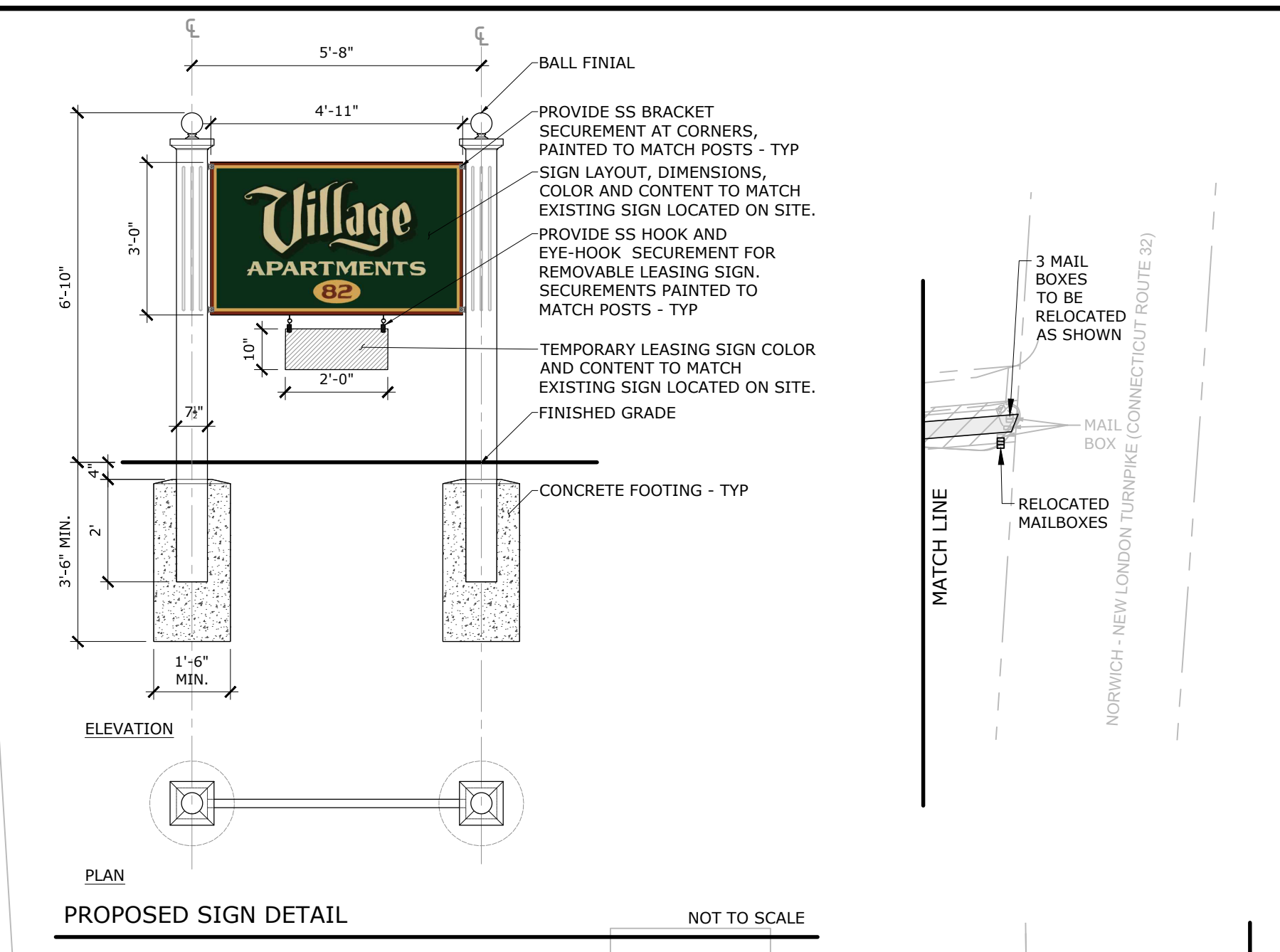
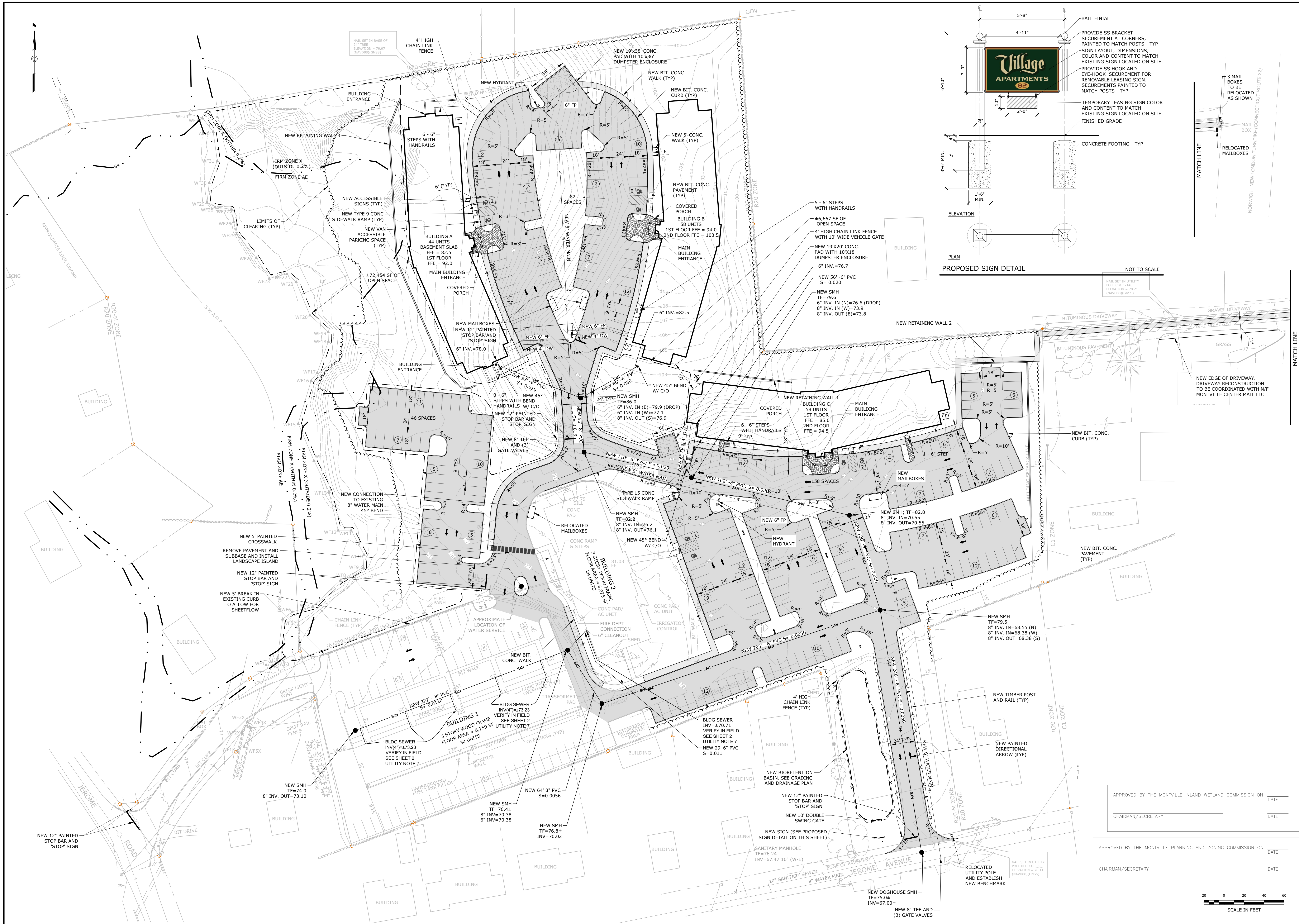
BENCH MARK  
NAIL SET IN UTILITY  
POLE HESCO 3.9  
ELEVATION = 76.11  
(NAVD8)(GNSS)

APPROVED BY THE MONTVILLE INLAND WETLAND COMMISSION ON \_\_\_\_\_ DATE \_\_\_\_\_  
CHAIRMAN/SECRETARY \_\_\_\_\_ DATE \_\_\_\_\_

APPROVED BY THE MONTVILLE PLANNING AND ZONING COMMISSION ON \_\_\_\_\_ DATE \_\_\_\_\_  
CHAIRMAN/SECRETARY \_\_\_\_\_ DATE \_\_\_\_\_



<p><b>DEMOLITION PLAN</b></p>	
<p><b>VILLAGE APARTMENTS - PHASE III</b></p>	
<p>15 JEROME AVENUE, 82 JEROME ROAD AND 232 ROUTE 92, UNCASVILLE - MONTVILLE, CT</p>	
<p><b>VILLAGE APARTMENTS LLC AND CONNECTICUT MULTIFAMILY EQUITIES II, LLC</b></p>	
<p>1099 NORTH STREET, WHITE PLAINS, NY</p>	
<p>SCALE 1" = 40'</p>	<p>DATE 3/11/2021</p>
<p>CONV. NO. 88VA9 01</p>	<p>DATE 3/11/2021</p>
<p>DRAWN BY BJM</p>	<p>APPROVED BY PB</p>
<p>STAMP</p>	<p>DESCRIPTION OF REVISION</p>
<p>NO. OF SHEETS 14</p>	<p>DATE</p>
<p>SHEET NO. 4</p>	<p>DATE</p>
<p>DRAWING</p>	<p>DATE</p>
<p><b>19000079.05</b></p>	<p>DATE</p>



REV.	DATE	DESCRIPTION OF REVISION
1	11/15/2021	IWC AND PZC SUBMISSION
2	03/15/2022	REVISIONS PER TOWN AND THIRD PARTY REVIEW COMMENTS
3	09/16/2022	REVISIONS PER TOWN AND THIRD PARTY REVIEW COMMENTS

**Loureiro**  
 Engineering, Construction, Architecture, Energy  
 15 Jerôme Avenue, 82 Jerome Road and 232 Route 92, Uncasville - Montville, CT  
 Phone: 860-448-9494 • Fax: 860-448-0899  
 An Employee-Owned Company • www.loureiro.com  
 ©Loureiro Group, Inc. All rights reserved 2019

SCALE	1" = 40'
DATE	3/11/2021
CONTRACT NO.	88VA9 01
DRAWN BY	BJM
APPROVED BY	PB
DATE	3/11/2021

**SITE LAYOUT AND UTILITIES PLAN**

**VILLAGE APARTMENTS - PHASE III**  
 15 JEROME AVENUE, 82 JEROME ROAD AND 232 ROUTE 92, UNCASVILLE - MONTVILLE, CT

**VILLAGE APARTMENTS LLC AND CONNECTICUT MULTIFAMILY UTILITIES II, LLC**  
 1099 NORTH STREET, WHITE PLAINS, NY

APPROVED BY THE MONTVILLE INLAND WETLAND COMMISSION ON \_\_\_\_\_ DATE \_\_\_\_\_

CHAIRMAN/SECRETARY \_\_\_\_\_ DATE \_\_\_\_\_

APPROVED BY THE MONTVILLE PLANNING AND ZONING COMMISSION ON \_\_\_\_\_ DATE \_\_\_\_\_

CHAIRMAN/SECRETARY \_\_\_\_\_ DATE \_\_\_\_\_

DRAWING NO. 19000079.06

SHEET NO. 5 NO. OF SHEETS 14

