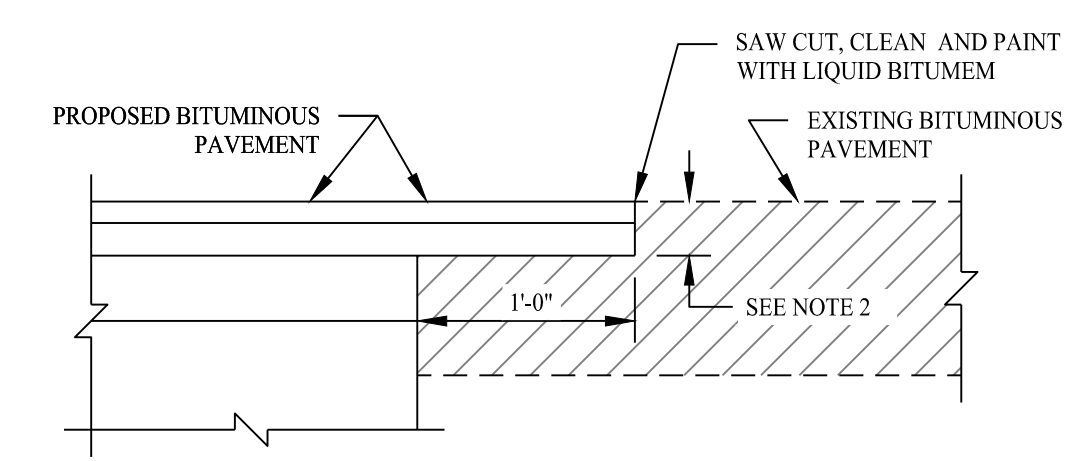


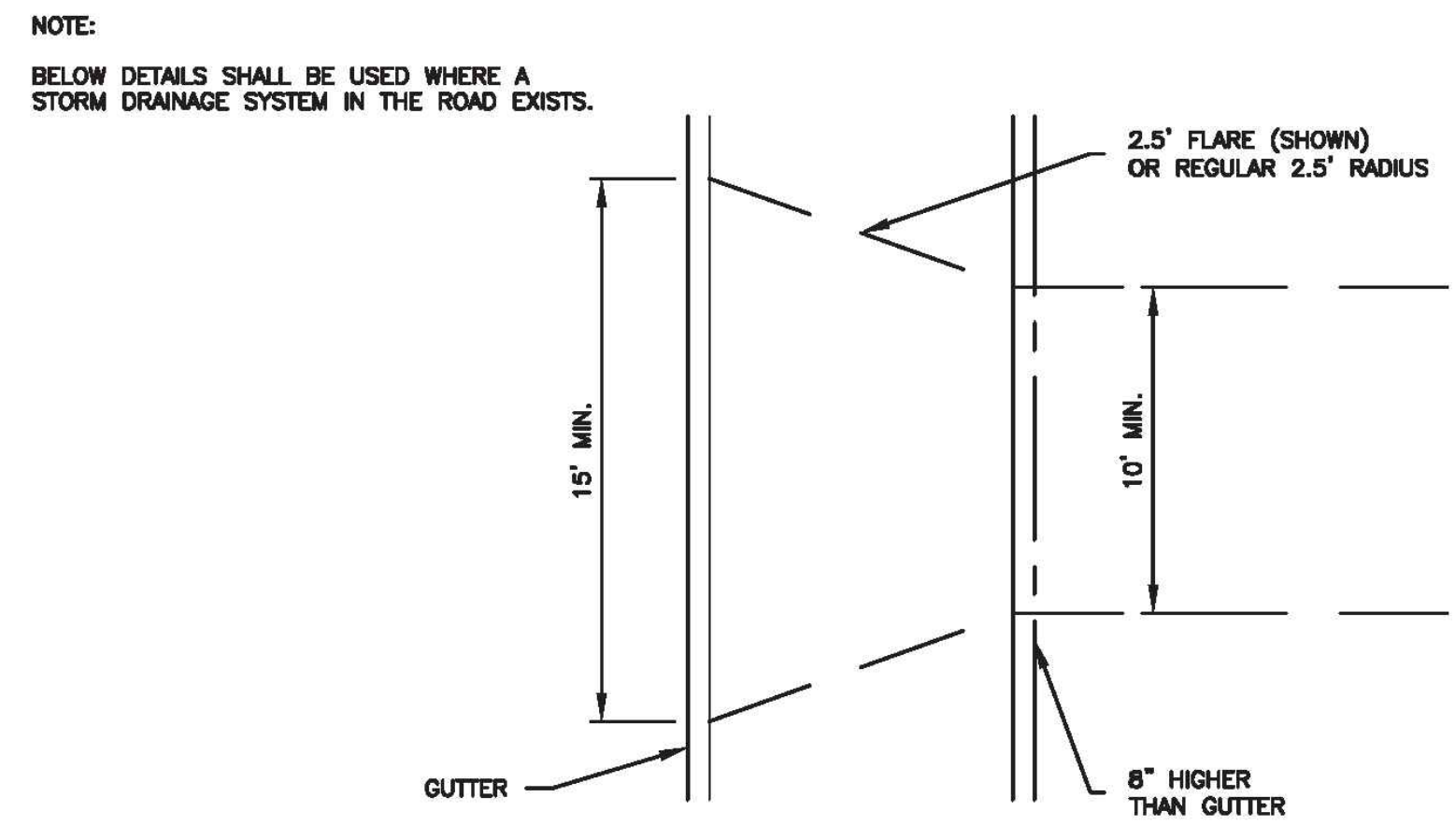
TYPICAL ELECTRICAL/TELEPHONE/CABLE AND GAS TRENCH

SCALE: NTS



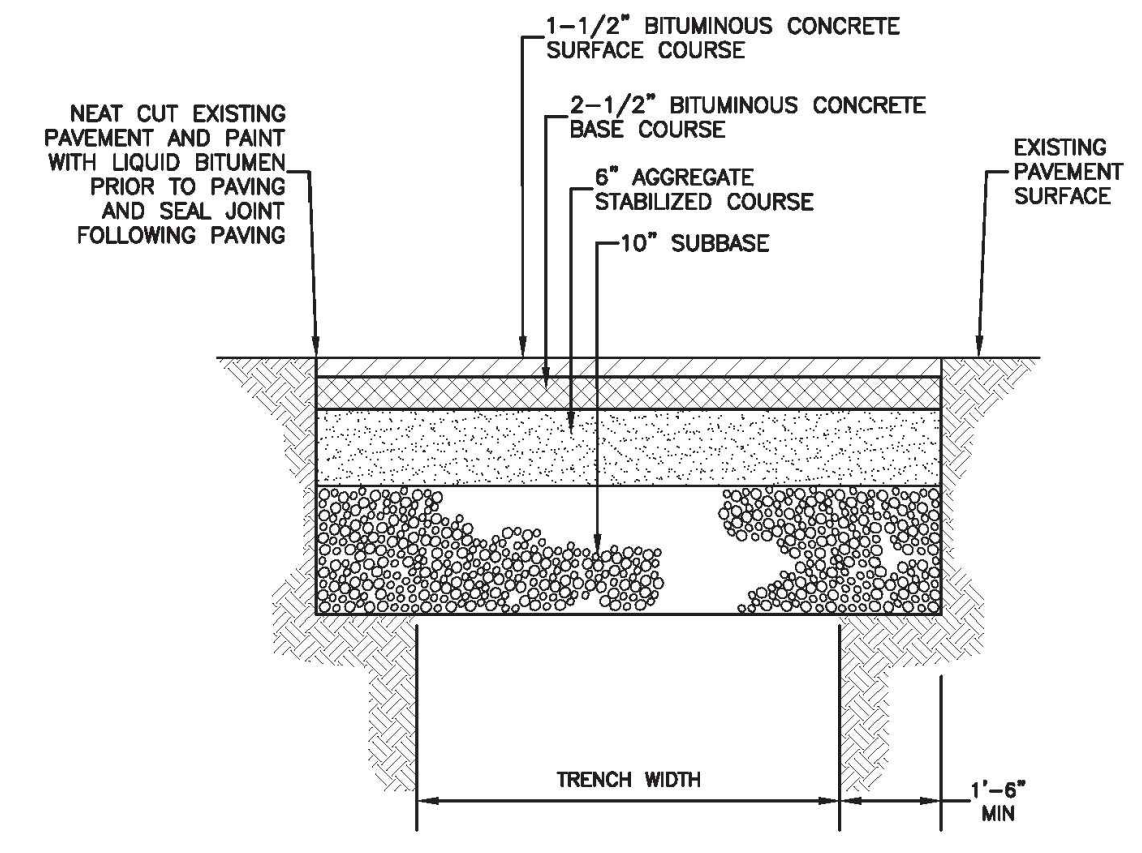
PAVEMENT MATCH TREATMENT (SAWCUT) DETAIL

SCALE: NTS



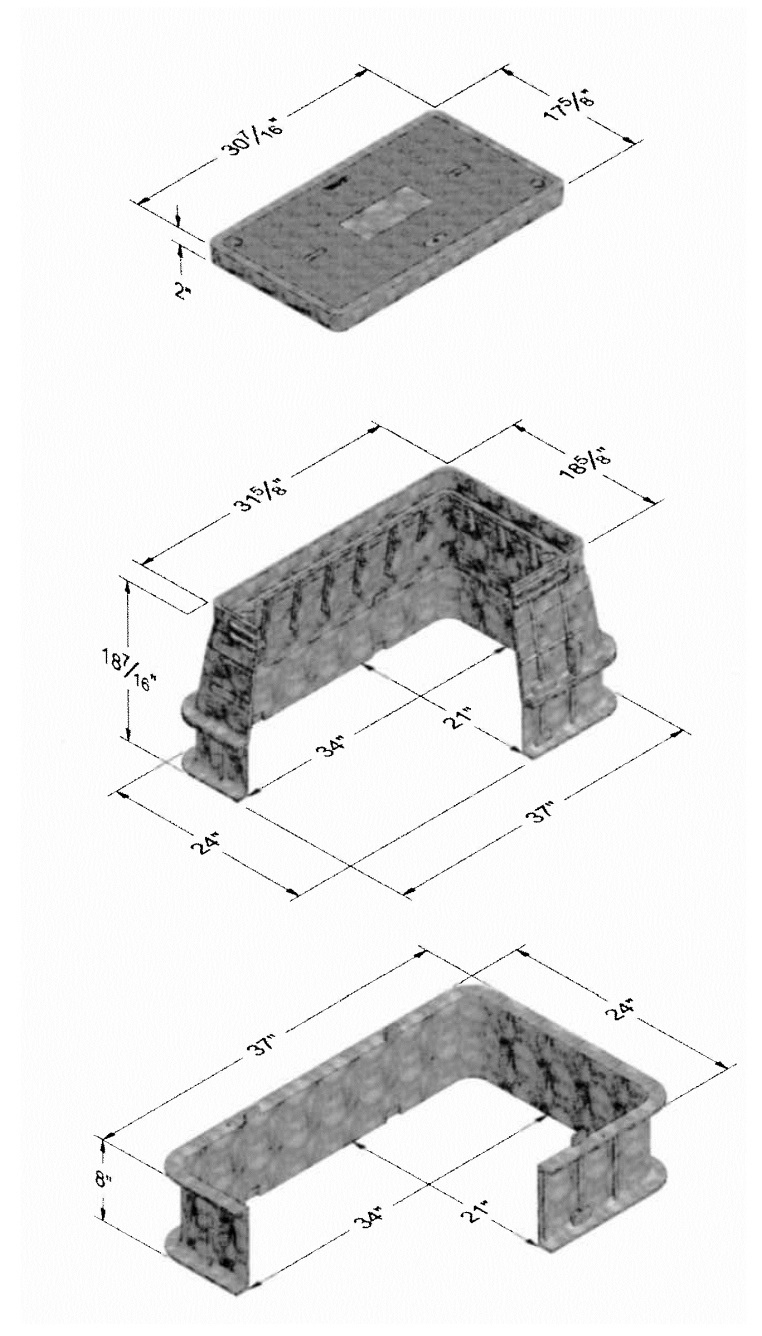
NOTE:
BELOW DETAILS SHALL BE USED WHERE A STORM DRAINAGE SYSTEM IN THE ROAD EXISTS.

NOTE:
THE CONTRACTOR SHALL MAINTAIN A MINIMUM 15' WIDE TRAVEL WAY AT ROAD CROSSINGS AT ALL TIMES DURING CONSTRUCTION.



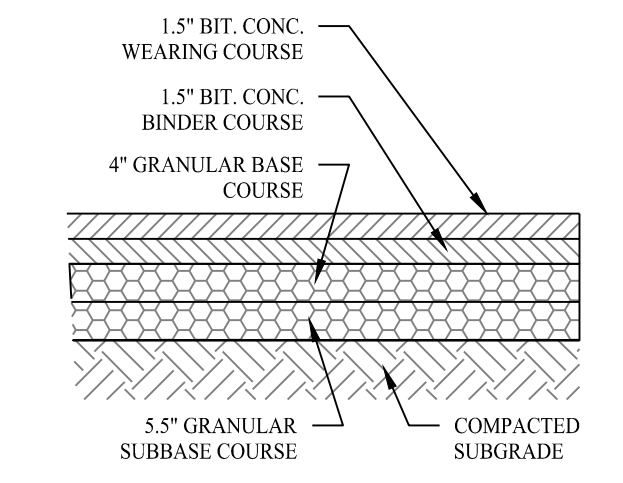
PERMANENT PAVEMENT REPAIR

SCALE: NTS DETAIL PROVIDED BY TOWN OF MONTVILLE



TYPICAL HANDHOLE

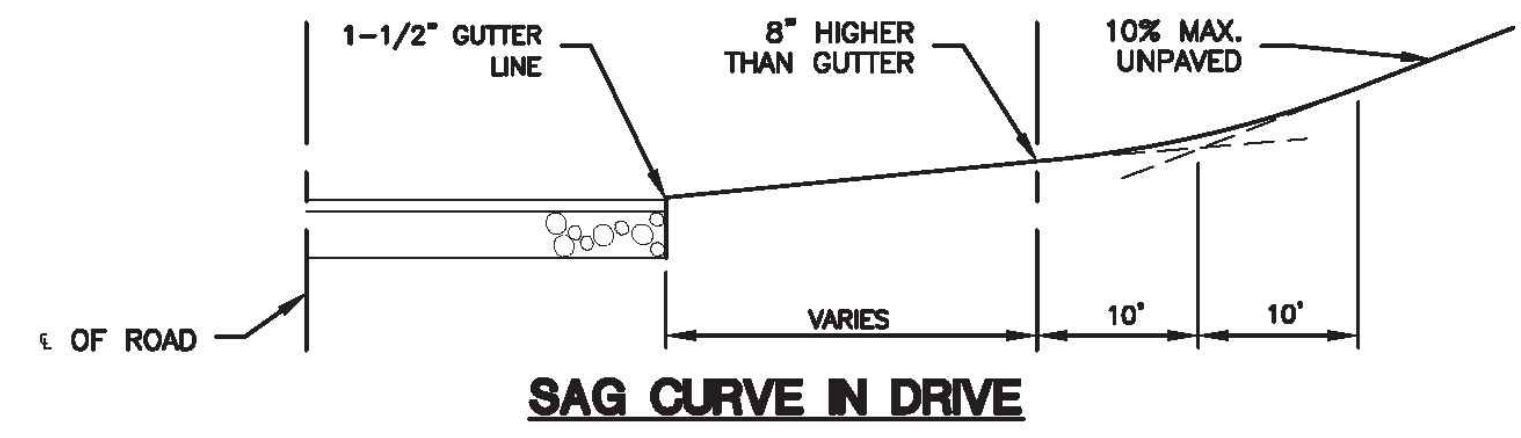
SCALE: NTS



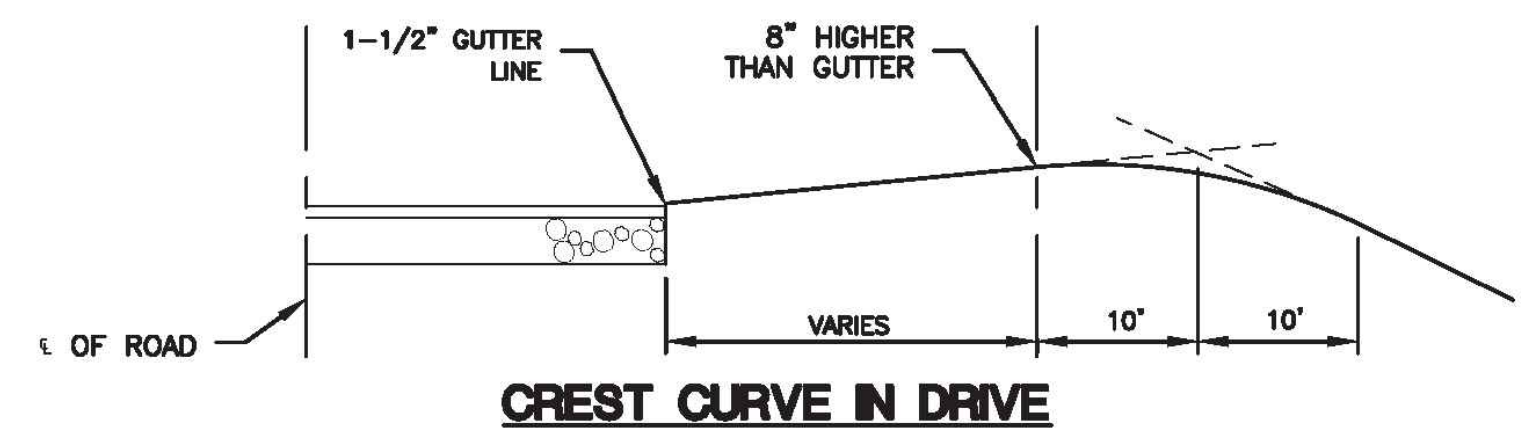
STANDARD DUTY ASPHALT PAVING

PAVING DETAIL

SCALE: NTS



SAG CURVE IN DRIVE



CREST CURVE IN DRIVE

RESIDENTIAL DRIVEWAY CURBING

SCALE: NTS DETAIL PROVIDED BY TOWN OF MONTVILLE

| Rev. #: | Date | Description |
|---------|------|-------------|
| | | |
| | | |
| | | |

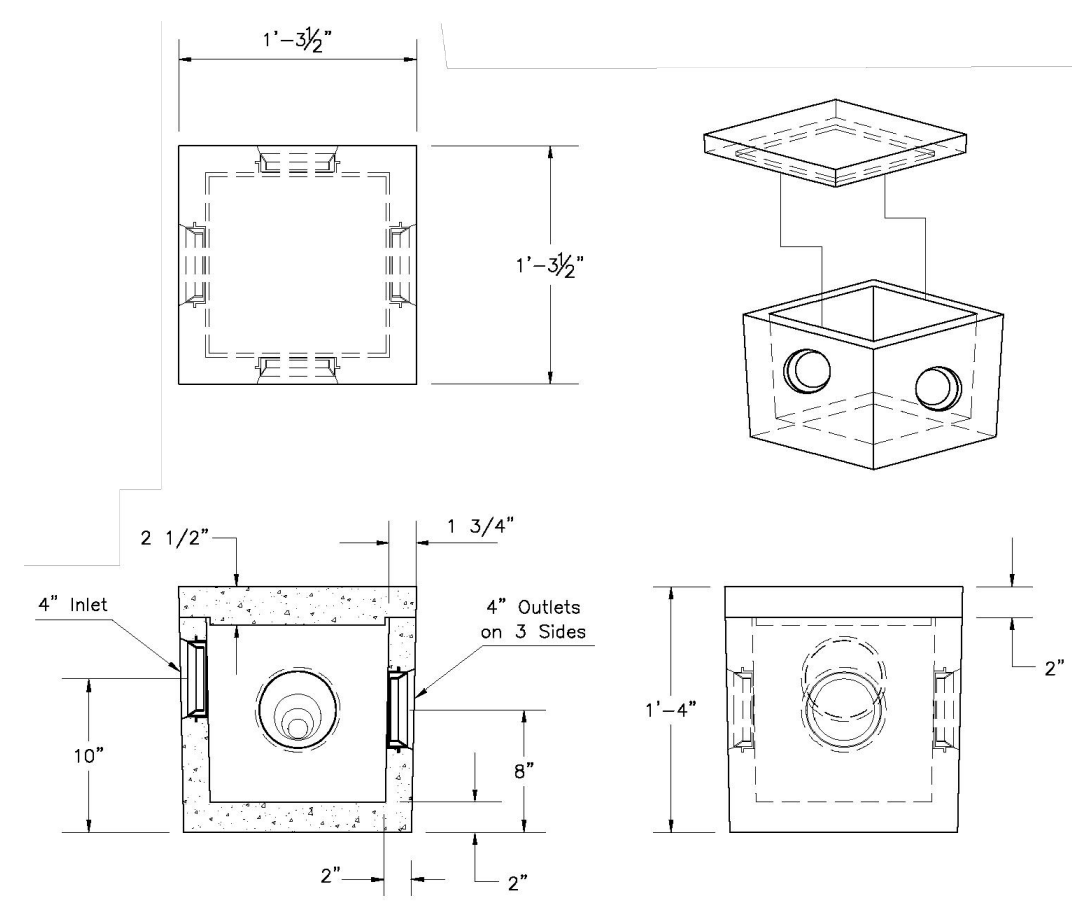
SOLLI ENGINEERING
 501 Main Street, Monroe, CT 06468 T: (203) 880-5455 F: (203) 880-9695
 11 Vanderbilt Ave, Norwood, MA 02062 T: (781) 352-8491 F: (203) 880-9695

Drawn By: CJS
 Checked By: CJB
 Approved By: KMS
 Project #: 22109401
 Plan Date: 07/17/23
 Scale: NTS



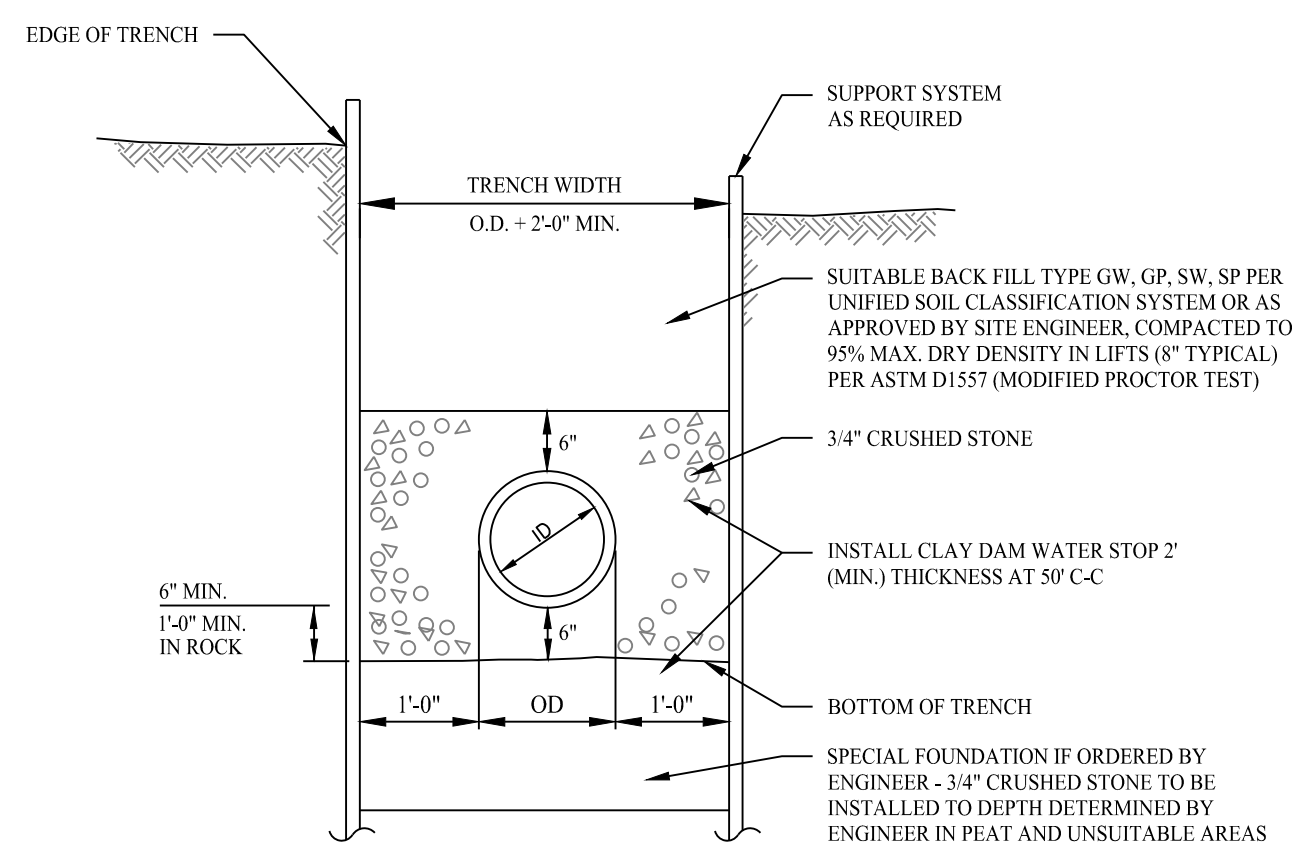
PROPOSED 1-LOT RESUBDIVISION OF 958 ROUTE 163 (PARCEL ID: 046-008-000) OAKDALE, CONNECTICUT JULY 17, 2023

Sheet Title: CONSTRUCTION DETAIL
 Sheet #: 3.01



DISTRIBUTION BOX

SCALE: NTS



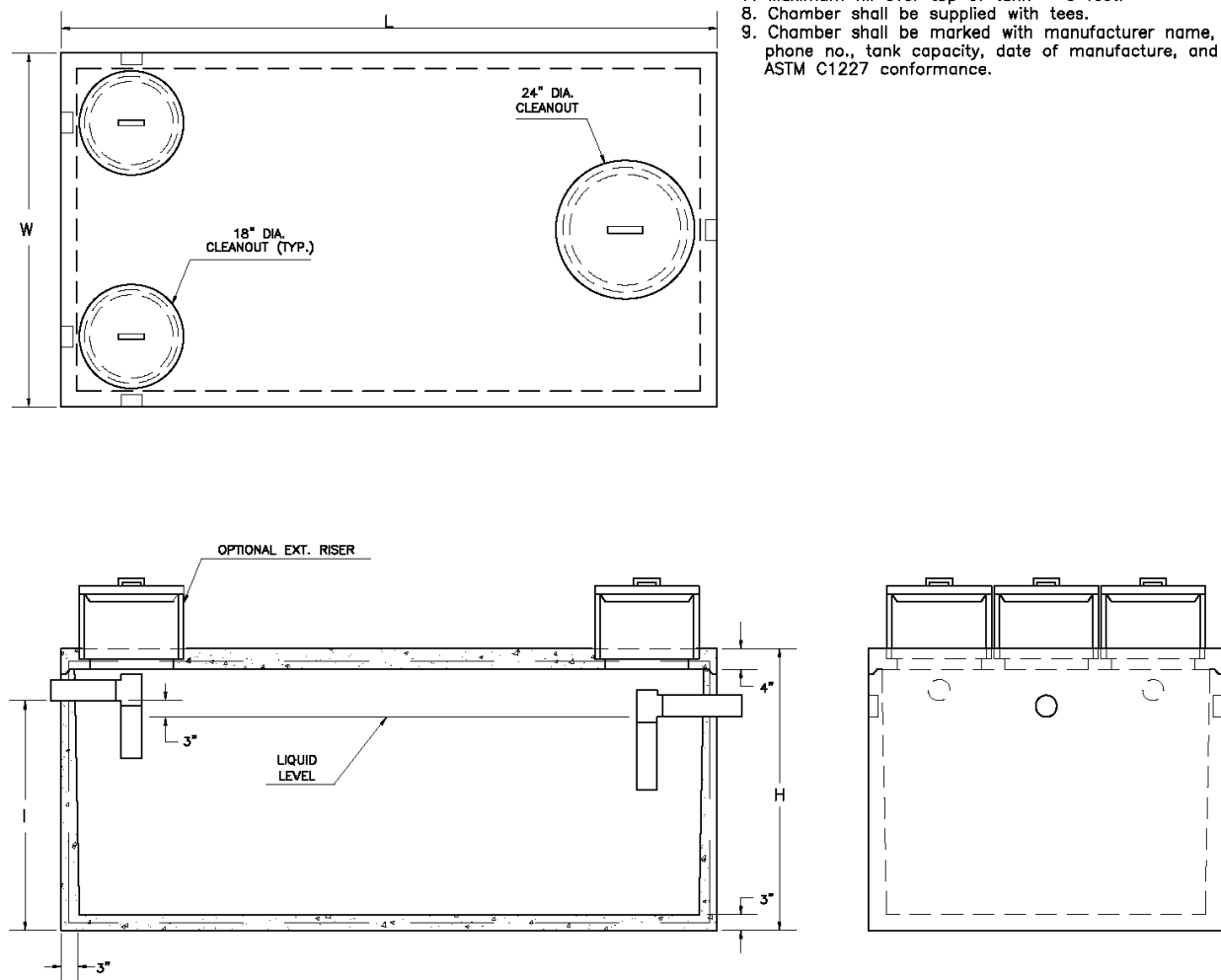
TYPICAL SANITARY SEWER TRENCH SECTION

SCALE: NTS

**PRECAST CONCRETE
1250 Gallon Capacity
Residential**

| MODEL NO. | LIQUID CAPACITY | LENGTH | WIDTH | INVERT | HEIGHT | WEIGHT (LBS.) |
|-----------|-----------------|--------|-------|--------|--------|---------------|
| P1250RES | 1250 | 10'-6" | 5'-6" | 3'-0" | 4'-6" | 8650 |

- NOTES:
- Concrete - 4,000 PSI @ 28 DAYS.
 - Meets or exceeds state and local requirements.
 - All shipping joints sealed with Butyl Rubber.
 - Non-traffic loading use only.
 - Single compartment chamber. Monolithic Design.
 - Side inlet pipes shall extend to cleanout cover thru rest in pipe support.
 - Maximum fill over top of tank - 3 feet.
 - Chamber shall be supplied with tees.
 - Chamber shall be marked with manufacturer name, phone no., tank capacity, date of manufacture, and ASTM C1227 conformance.



*Nominal Dimension. Slight variation in dimensions may occur due to tolerances for manufacturing purposes.

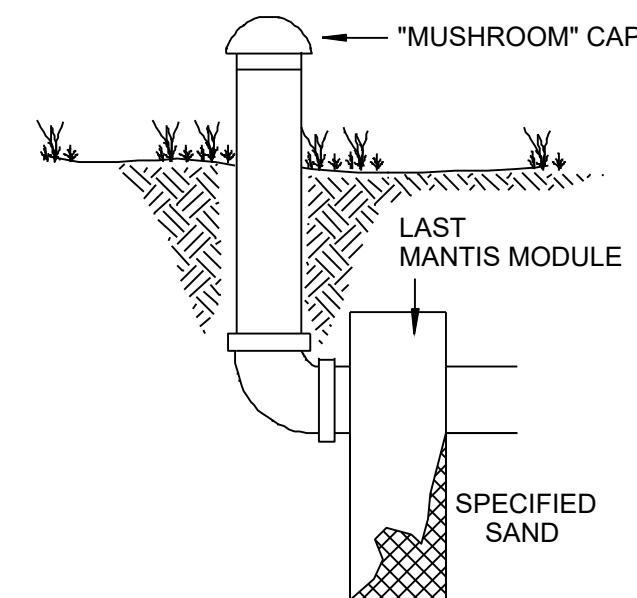
PRECAST CONCRETE 1,250 GALLON SEPTIC TANK

SCALE: NTS

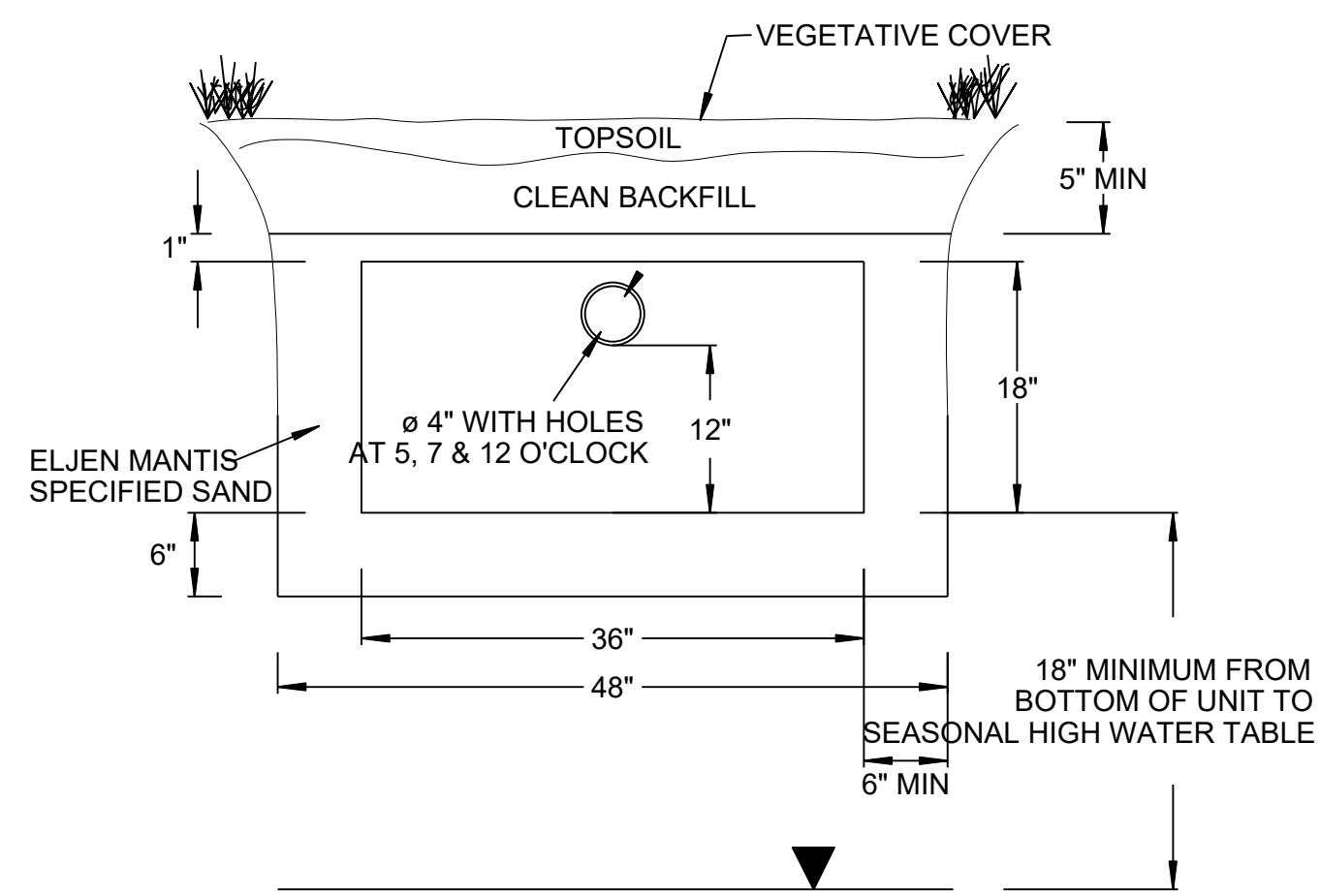
DETAIL PROVIDED BY CT PRECAST CORPORATION

SYSTEM VENTING INFORMATION

NOTE: VENTING REQUIRED WHEN MORE THAN 18" OF COVER AS MEASURED FROM THE TOP OF THE UNIT TO FINISHED GRADE



SCALE: NTS



NOTE: VENTING REQUIRED WHEN MORE THAN 18" OF COVER AS MEASURED FROM THE TOP OF THE UNIT TO FINISHED GRADE

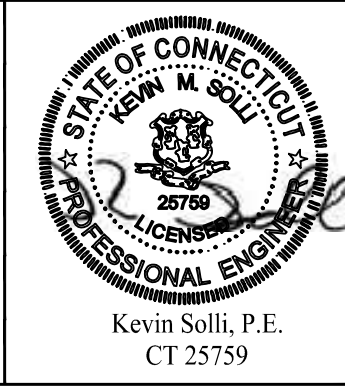
MANTIS 536-8 LEACHING SYSTEM CROSS SECTION W/ VENTING DETAIL

DETAIL PROVIDED BY ELJEN CORPORATION

| Rev. #: | Date | Description |
|---------|------|-------------|
| | | |
| | | |
| | | |
| | | |

SOLLI ENGINEERING
 501 Main Street, Monroeville, CT 06468 T: (203) 880-5455 F: (203) 880-9695
 11 Vanderbilt Ave, Norwood, MA 02062 T: (781) 352-8491 F: (203) 880-9695

Drawn By: CJS
 Checked By: CJB
 Approved By: KMS
 Project #: 22109401
 Plan Date: 07/17/23
 Scale: NTS



Project:
**PROPOSED 1-LOT
 RESUBDIVISION OF
 958 ROUTE 163
 (PARCEL ID : 046-008-000)
 OAKDALE, CONNECTICUT
 JULY 17, 2023**

Sheet Title: **DETAIL SHEET**
 Sheet #: **3.02**