



RZ Design Associates, Inc.
**MECHANICAL, ELECTRICAL,
 AND STRUCTURAL ENGINEERING**
 750 OLD MAIN STREET
 SUITE 202
 ROCKY HILL, CT 06067
 P: (860) 436-4336
 F: (860) 436-4450
 www.rzdesignassociates.com

Revisions:
 Date:

Fred Marzec - Architects, LLC
 Architects and Planners
 99 Colonel Brown Road
 Griswold, CT. 06351
 Tel: (860) 376-2999
 Email address: fred@fredmarzec.com



Boy's & Girls Restroom Modifications
Fair Oaks School
Community Center
 836 Old Colchester Road Oakdale, CT.

Plans
ELECTRICAL
GENERAL
INFORMATION

PROJECT NO: **2022-10.22**

SCALE:
 AS NOTED
 DRAWN BY:
 DSL
 CHECKED BY:
 BJZ
 DATE:
 12/22/2022

E-0

ELECTRICAL LEGEND

N O T E : ALL MOUNTING HEIGHTS GIVEN ARE TO CENTERLINE OF DEVICE UNLESS OTHERWISE NOTED.

SYMBOL	DESCRIPTION	SYMBOL	DESCRIPTION
	RECESSED CEILING MOUNTED LIGHT FIXTURE - SUBLETTER INDICATES TYPE	A	AMPERE
	LIGHT FIXTURE WITH INTEGRAL EMERGENCY LIGHTING BATTERY PACK	AC	ABOVE COUNTER
	CEILING MOUNTED OCCUPANCY SENSOR	A.F.F.	ABOVE FINISHED FLOOR
	GROUNDING DUPLEX GFI RECEPTACLE "WEATHERPROOF WHILE IN-USE" COVER	A.F.G.	ABOVE FINISHED GRADE
	WEATHERPROOF NON-FUSED DISCONNECT SWITCH	C	CONDUIT
	MOTOR	CIB	CIRCUIT BREAKER
	ELECTRICAL PANELBOARD	EF	EXHAUST FAN
	HEAT DETECTOR	ETR	EXISTING TO REMAIN
		GFI	GROUND FAULT INTERRUPTER
	BRANCH CIRCUIT WIRING	NL	NEW LOCATION OF EXISTING RECOATED
	BRANCH CIRCUIT HOMERUN	RE	REMOVE EXISTING
	UNSWITCHED LIGHTING CIRCUIT WIRING	WAP	WIRELESS ACCESS POINT
	ELECTRICAL GROUND	WP	WEATHER PROOF

ELECTRICAL DEMOLITION NOTES

- PRIOR TO SUBMITTING BID, VISIT SITE AND IDENTIFY EXISTING CONDITIONS AND DIFFICULTIES THAT WILL AFFECT WORK TO BE PERFORMED. NO COMPENSATION WILL BE GRANTED FOR ADDITIONAL WORK CAUSED BY UNFAMILIARITY WITH SITE CONDITIONS THAT ARE VISIBLE OR READILY IDENTIFIED BY EXPERIENCED OBSERVERS. INCLUDE IN THE BID ALL DEMOLITION WORK REQUIRED.
- PERFORM WORK FOR REMOVAL AND DISPOSAL OF EQUIPMENT AND MATERIALS CONTAINING TOXIC SUBSTANCES REGULATED UNDER THE FEDERAL TOXIC SUBSTANCES CONTROL ACT (TSCA) IN ACCORDANCE WITH APPLICABLE FEDERAL, STATE, AND LOCAL REGULATIONS. APPLICABLE EQUIPMENT AND MATERIALS INCLUDE, BUT ARE NOT LIMITED TO:
 - PCB-CONTAINING ELECTRICAL EQUIPMENT, INCLUDING TRANSFORMERS, CAPACITORS, AND SWITCHES.
 - PCB- AND DEHP-CONTAINING LIGHTING BALLASTS.
 - MERCURY-CONTAINING LAMPS AND TUBES.

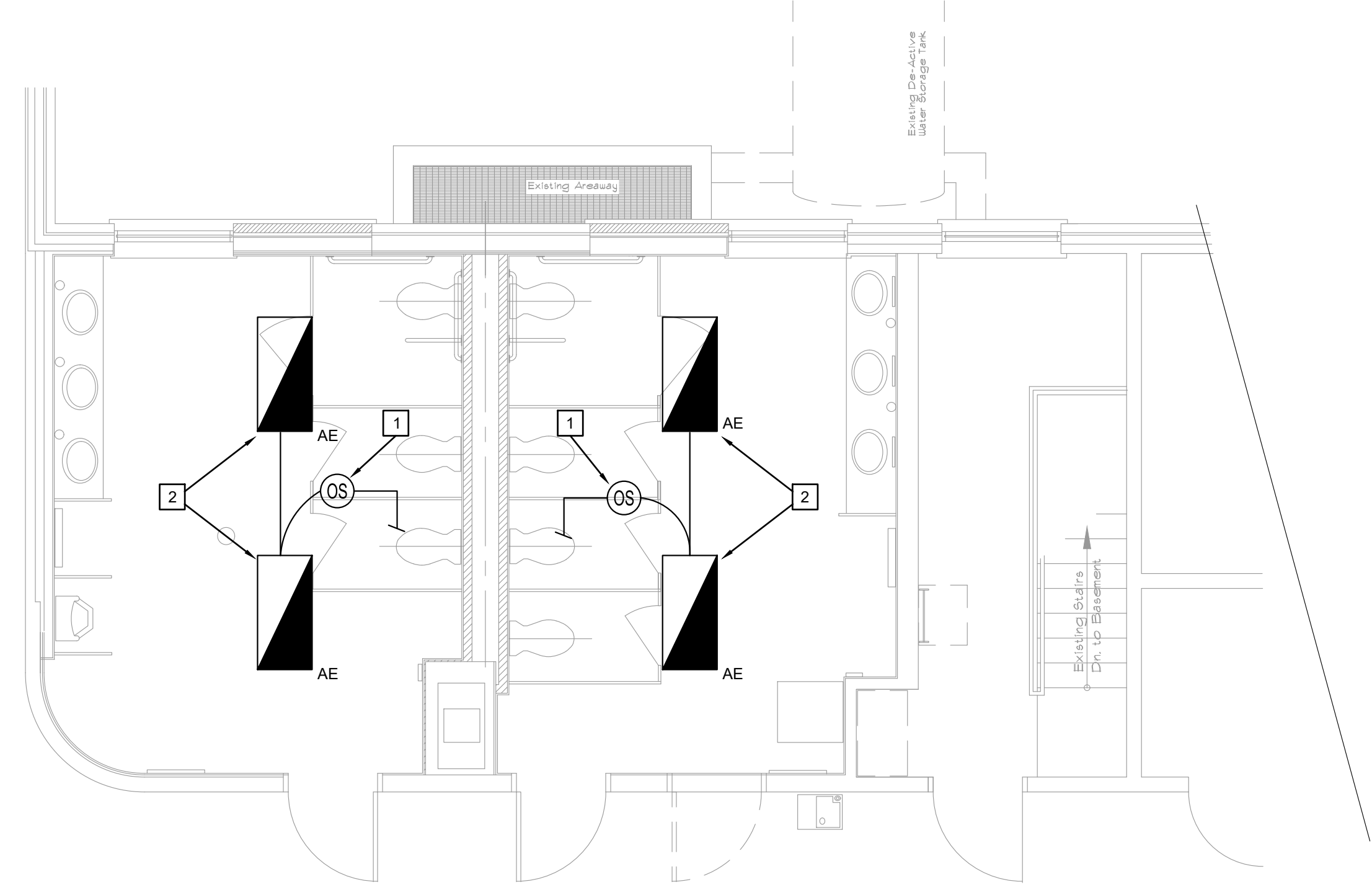
ELECTRICAL GENERAL NOTES

- POWER WIRING TO MECHANICAL EQUIPMENT, MOTOR CONTROLLERS AND CONTROL PANELS SHALL BE PROVIDED UNDER DIVISION 26 (ELECTRICAL)
- HVAC CONTROL WIRING SHALL BE PROVIDED UNDER DIVISION 25 (HVAC).
- UNLESS OTHERWISE STATED OR SPECIFIED ALL STARTERS SHALL BE NEMA COMBINATION MAGNETIC MOTOR STARTERS SIZED PER MOTOR HP. COORDINATE MOTOR STARTER TYPE AND FEATURES WITH THE REQUIREMENTS OF THE MECHANICAL EQUIPMENT AND THE CONTROL SYSTEM. PROVIDE OVERLOAD, UNDER VOLTAGE AND PHASE LOSS PROTECTION IN ALL STARTERS.
- PROVIDE FLEXIBLE CONNECTIONS ON ALL ROTATING EQUIPMENT. WIRING METHODS:
 - GENERAL: CONCEAL ALL WIRING IN BUILDING WALLS, FLOORS, AND ABOVE CEILINGS EXCEPT IN MECHANICAL/ELECTRICAL EQUIPMENT ROOMS, BASEMENTS, UNFINISHED ATTIC SPACES.
 - GENERAL: BRANCH CIRCUIT WIRING IS SHOWN ON THE FLOOR PLANS. NUMERALS ADJACENT TO THE HOMERUN SYMBOLS FOR LIGHTING, RECEPTACLES, MOTORS, APPLIANCES, ETC. INDICATE THE CIRCUIT NUMBER TO WHICH THE ITEMS ARE TO BE CONNECTED. PROVIDE BRANCH CIRCUIT WIRING FOR ALL ITEMS SHOWN IN ACCORDANCE WITH THESE GENERAL NOTES AND THE ELECTRICAL SPECIFICATIONS.
 - MECHANICAL EQUIPMENT (MOTORS, HVAC EQUIPMENT, ETC.) IS SHOWN ON PLAN DRAWINGS FOR APPROXIMATE LOCATION ONLY. REFER TO MECHANICAL PLANS FOR EXACT LOCATIONS.
 - ALL 1 POLE, 15 AND 20 AMPERE BRANCH CIRCUITS SERVING RECEPTACLE OR LIGHTING SHALL BE 2 WIRE CIRCUITS PROVIDING AN INDIVIDUAL NEUTRAL CONDUCTOR FOR EACH UNGROUNDED (HOT) CIRCUIT CONDUCTOR. DO NOT SHARE NEUTRAL CONDUCTORS.
 - ALL CIRCUITS SHALL BE 2#12,1#12G, 3/4" C CONNECT TO NEW 20A-1P CIRCUIT BREAKER IN PANEL INDICATED UNLESS NOTED OTHERWISE.
 - ALL 120VAC(277VAC) BRANCH CIRCUITS EXCEEDING 150' (250') IN LENGTH SHALL BE INCREASED TO 2#10,1#10G,3/4" C. UNLESS NOTED OTHERWISE.
 - REFER TO ARCHITECT'S REFLECTED CEILING PLAN FOR EXACT LOCATIONS OF CEILING MOUNTED DEVICES.
 - ALL DEVICES SHALL BE LABELED WITH SOURCE PANEL AND CIRCUIT NUMBER (S).
 - ALL EXPOSED CABLES OF ANY TYPE IN PLENUM CEILING SPACE SHALL BE PLENUM RATED.
 - CONTRACTOR SHALL PROVIDE ALL NECESSARY MISCELLANEOUS STEEL FOR THE SUPPORT OF ALL EQUIPMENT, PIPING, CONDUIT AND DUCTWORK. SUSPENDED FROM SLAB, STEEL, WALL OR TRUSSWORK.
 - CONTRACTOR SHALL COORDINATE HIS WORK WITH THE WORK OF ALL OTHER TRADES AND THE EXISTING FIELD CONDITIONS.
- ELECTRICAL TERMINATIONS (LUGS, TERMINALS, ETC.) ON ALL EQUIPMENT SHALL BE RATED FOR USE WITH 90 DEGREE C CONDUCTORS.
- EQUIPMENT GROUNDING:
 - INSULATED (GREEN) EQUIPMENT GROUND WIRES SHALL BE PROVIDED IN ALL FEEDERS AND BRANCH CIRCUITS.
- ALL PENETRATIONS OF FLOORS (WHETHER OR NOT FIRE RESISTANCE RATED) AND ALL PENETRATIONS OF FIRE RATED WALLS AND FLOORS SHALL BE PROVIDED WITH A THROUGH PENETRATION PROTECTION SYSTEM (FIRESTOPPING). EACH THROUGH - PENETRATION PROTECTION SYSTEM SHALL BE TESTED IN ACCORDANCE WITH ASTM E814 AND BE LISTED FOR THE TYPE OF FLOOR OR WALL ASSEMBLY PENETRATED AND THE TYPE OF PROTECTION SYSTEM.
- IT IS NOT THE INTENTION TO SHOW EVERY FITTING, HANGER, WIRE OR DEVICE. ALL SUCH ITEMS SHALL BE FURNISHED AND INSTALLED AS NECESSARY FOR A COMPLETE SYSTEM.
- DRAWINGS ARE DIAGRAMMATIC AND INDICATE THE GENERAL ARRANGEMENT OF SYSTEMS AND WORK INCLUDED IN THE CONTRACT. (DO NOT SCALE THE DRAWINGS.)
- PROVIDE POWER TO ALL MECHANICAL EQUIPMENT SHOWN ON MECHANICAL PLANS, RISERS, SCHEDULES AND SPECIFICATIONS. REFER TO MECHANICAL PLANS AND SCHEDULES FOR LOCATIONS AND ELECTRICAL REQUIREMENTS. COORDINATE EXACT LOCATION OF ALL EQUIPMENT WITH THE MECHANICAL CONTRACTOR.
- CONTRACTOR SHALL DETERMINE THE QUANTITY OF CONDUCTORS REQUIRED FOR PROPER OPERATION OF ALL SWITCHING SCHEMES.
- ALL BRANCH CIRCUIT WIRING SHOWN IS DIAGRAMMATIC. EXACT ROUTING SHALL BE FIELD COORDINATED TO CLEAR THE WORK OF OTHER TRADES.
- REFER TO ARCHITECTURAL ELEVATIONS FOR EXACT LOCATION OF ALL WIRING DEVICES SHOWN ON ELECTRICAL PLANS.
- ALL RECEPTACLES LOCATED WITHIN 6' OF SINKS AND ALL WET LOCATIONS SHALL BE GFI TYPE. EXTERIOR DEVICES TO BE PROVIDED WITH "WEATHERPROOF WHILE IN USE" COVERS
- BOND ALL OF THE FOLLOWING SERVICES TOGETHER WHERE PRESENT PER THE NEC: POWER, TELECOMMUNICATION, CATV.
- PROVIDE POWER FEED FROM PANEL WITH SUFFICIENT CAPACITY AND SPACE FOR ALL MISCELLANEOUS SYSTEMS. THESE SYSTEMS SHALL INCLUDE, BUT NOT LIMITED TO, MONITORING SYSTEMS, CONTROL PANELS, PLUMBING ACCESSORIES, ETC. CONTRACTOR SHALL FURNISH AND INSTALL ALL BRANCH CIRCUIT WIRING AND CIRCUIT BREAKERS FOR ALL EQUIPMENT SHOWN AS REQUIRED.
- PROVIDE ALL BONDING AND GROUNDING REQUIRED BY THE NATIONAL ELECTRIC CODE, NFPA 70 AND AS REQUIRED BY LOCAL AUTHORITY HAVING JURISDICTION.
- ALL REQUIRED BONDING CONDUCTORS SHALL BE MINIMUM #8 SOLID INSULATED COPPER, PROVIDE ALL NECESSARY FITTINGS, JUNCTION BOXES, END FITTINGS, ETC., FOR A COMPLETE, CONTINUOUS INSTALLATION.
- ALL BONDING/GROUNDING CONNECTIONS SHALL BE MADE BY LISTED CLAMP OR CONNECTORS AS REQUIRED BY ARTICLE 250 OF NFPA 70, THE NATIONAL ELECTRIC CODE (CURRENT ADOPTED EDITION).

Copyright © 2022 Fred Marzec - Architects, LLC. All rights reserved. Fred Marzec - Architects, LLC and Marzec - Architects, LLC are the registered owners of the trademarks and service marks used herein. They may not be used without the express written consent of Fred Marzec - Architects, LLC.

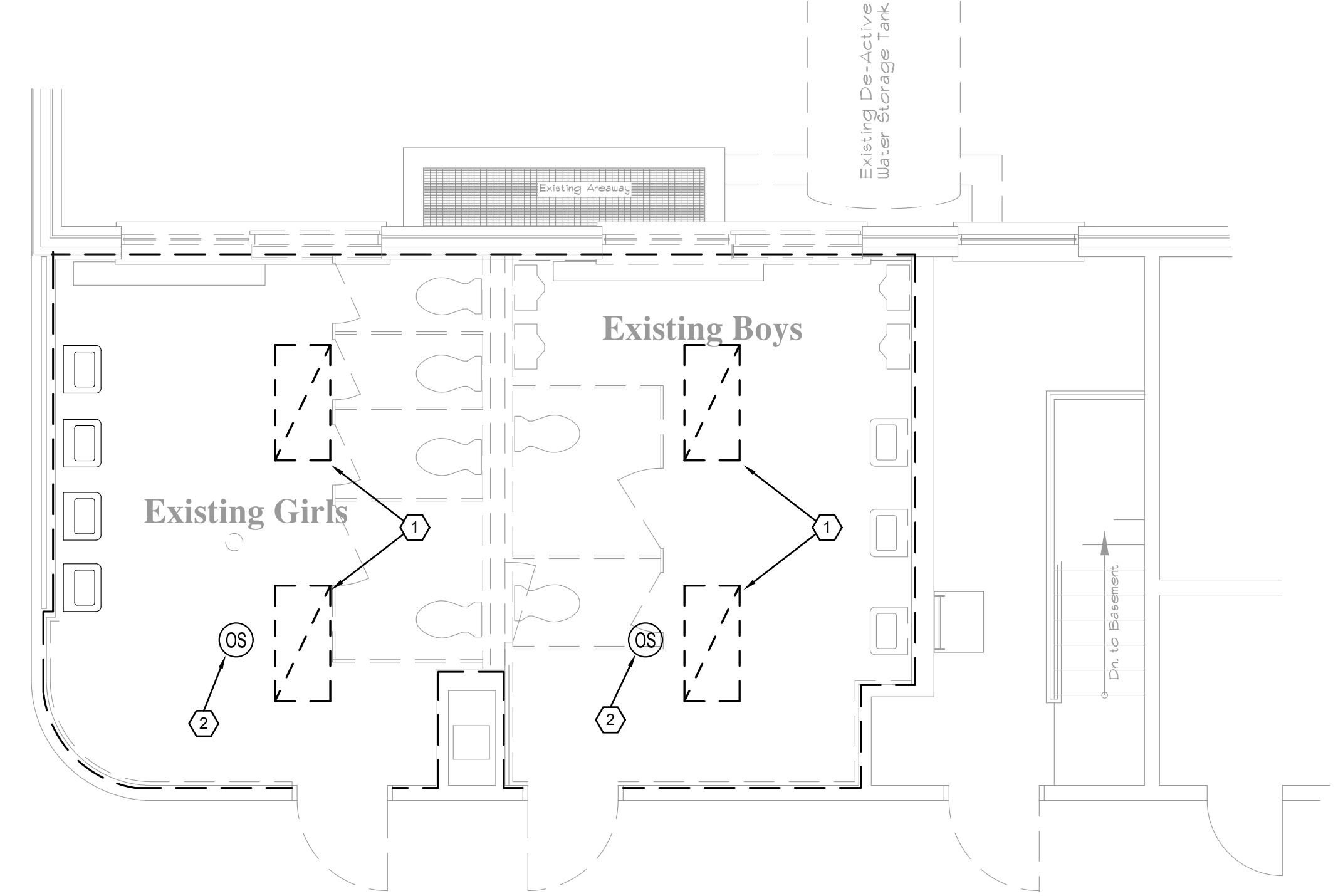


RZ Design Associates, Inc.
**MECHANICAL, ELECTRICAL,
 AND STRUCTURAL ENGINEERING**
 750 OLD MAIN STREET
 SUITE 202
 ROCKY HILL, CT 06067
 P: (860) 436-4336
 F: (860) 436-4450
 www.rzdesignassociates.com



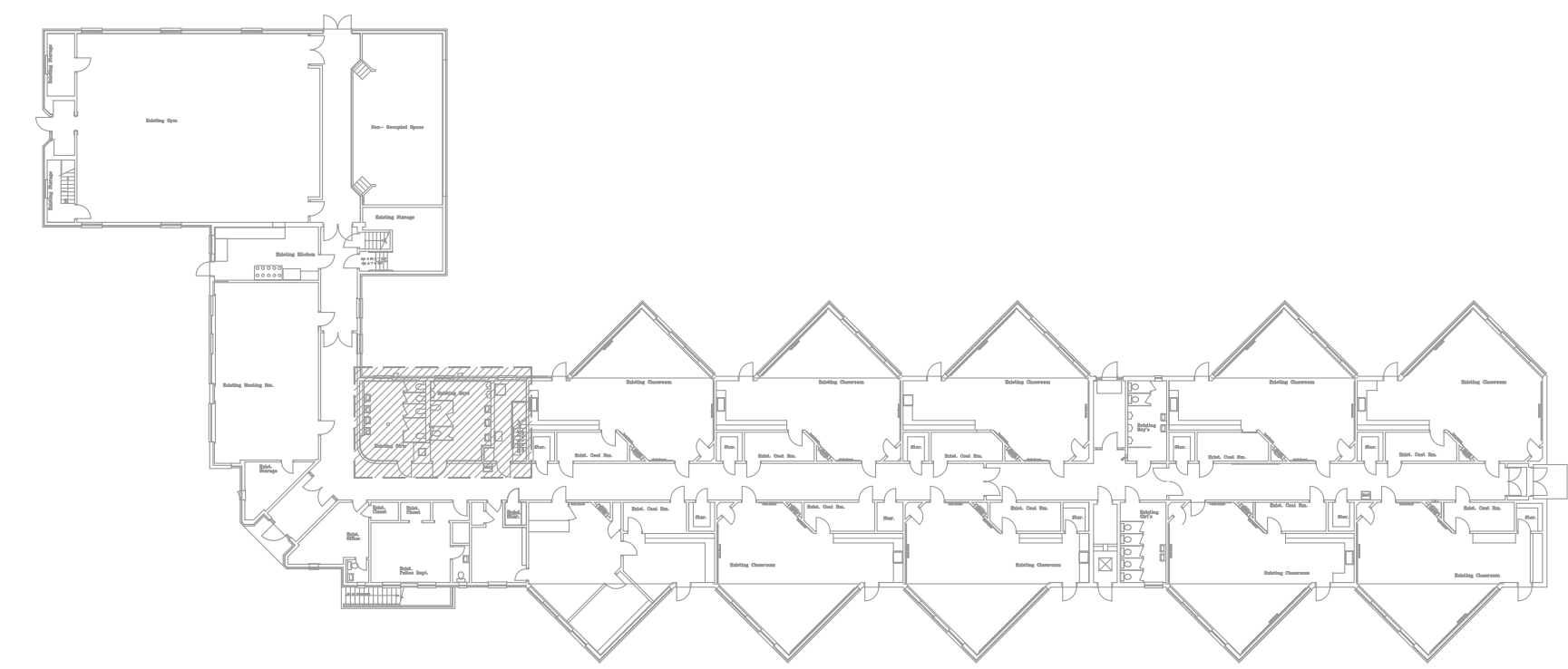
2 FIRST FLOOR NEW WORK PART PLAN
 E-1 SCALE: 1/4" = 1'-0"

- ELECTRICAL LIGHTING NEW WORK NOTES:**
- 1 PROVIDE AND INSTALL NEW CEILING MOUNTED OCCUPANCY SENSOR. EQUAL TO CURRENT LIGHTING #OMNIDT500BP1277. CONNECT TO UNSWITCHED LEG OF AREA LIGHTING CIRCUIT.
 - 2 PROVIDE AND INSTALL LIGHTING FIXTURE TYPE 'AE'. EQUAL TO COLUMBIA LIGHTING #LJT24-35-HLG-FS-A12-EU-ELL14, WITH EMERGENCY BATTERY PACK. CONNECT FIXTURE TO SWITCHED LEG (FROM OCCUPANCY SENSOR) FOR NORMAL LIGHTING CONTROL AND UNSWITCHED LEG FOR EMERGENCY LIGHTING CONTROL.)



1 FIRST FLOOR DEMOLITION PART PLAN
 E-1 SCALE: 1/4" = 1'-0"

- ELECTRICAL LIGHTING DEMOLITION NOTES:**
- 1 DISCONNECT AND REMOVE LIGHTING FIXTURE AND ASSOCIATED CIRCUITING. RETAIN UNSWITCHED CIRCUIT FOR CONNECTION TO NEW LIGHTS.
 - 2 DISCONNECT AND REMOVE CEILING MOUNTED OCCUPANCY SENSOR AND ASSOCIATED CIRCUITING.



Key Plan Main Level Floor
 No Scale

Date:	
Revisions:	

Fred Marzec - Architects, LLC
 Architects and Planners
 99 Colonel Brown Road
 Griswold, CT. 06351
 Tel: (860) 376-2999
 Email address: fred@fredmarzec.com

Boy's & Girls Restroom Modifications
Fair Oaks School
Community Center
 836 Old Colchester Road Oakdale, CT.

Plans
ELECTRICAL
LIGHTING
FLOOR PLANS

PROJECT NO: 2022-10-22

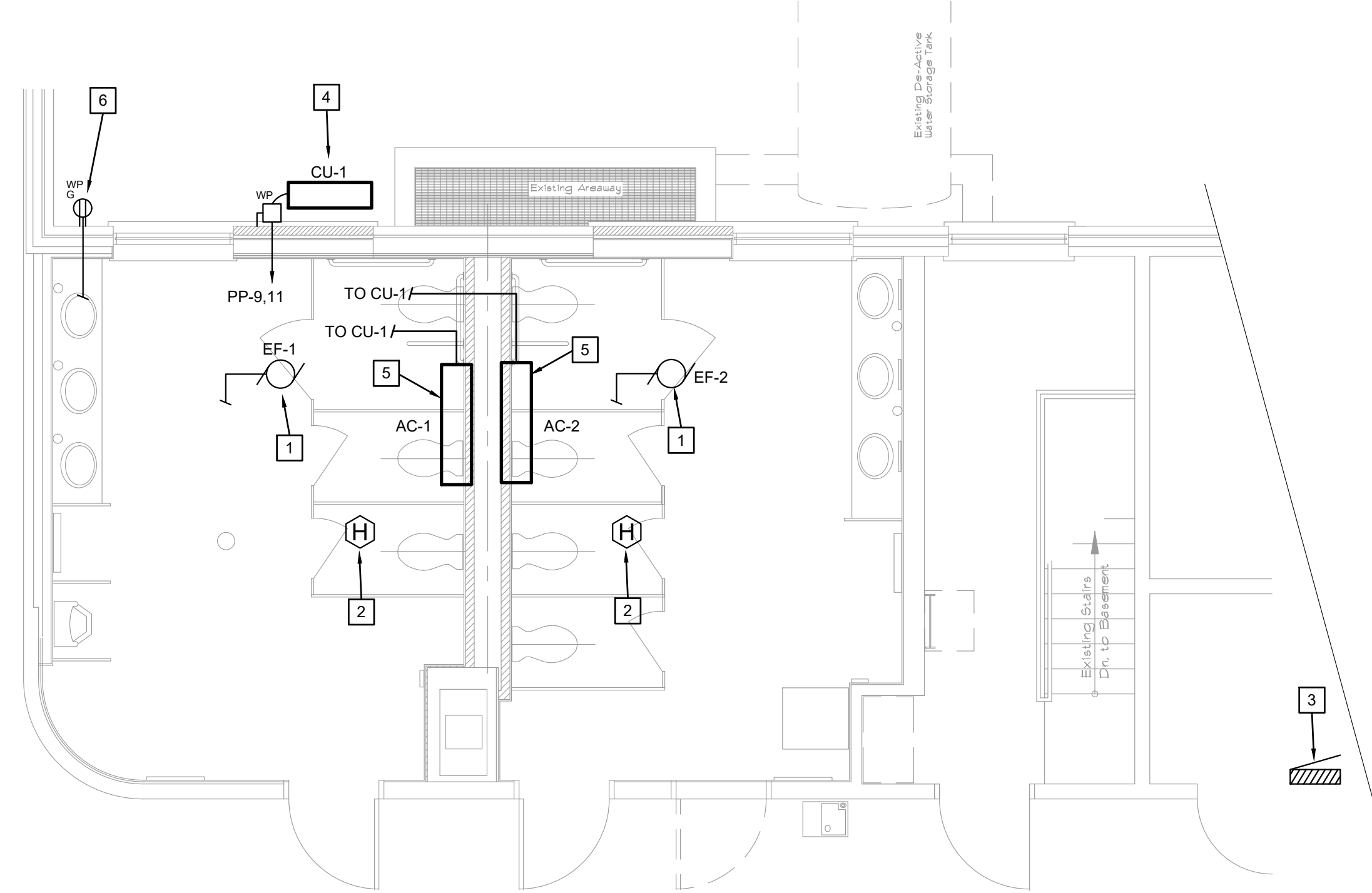
SCALE:	AS NOTED
DRAWN BY:	DSL
CHECKED BY:	RJZ
DATE:	12/22/2022

E-1

Copyright © 2022 Fred Marzec - Architects, LLC and Fred Marzec - Architects, LLC. They may not be reproduced, stored in a retrieval system, or transmitted in any form or by any means, electronic, mechanical, photocopying, recording, or by any information storage and retrieval system, without the express written consent of Fred Marzec - Architects, LLC.

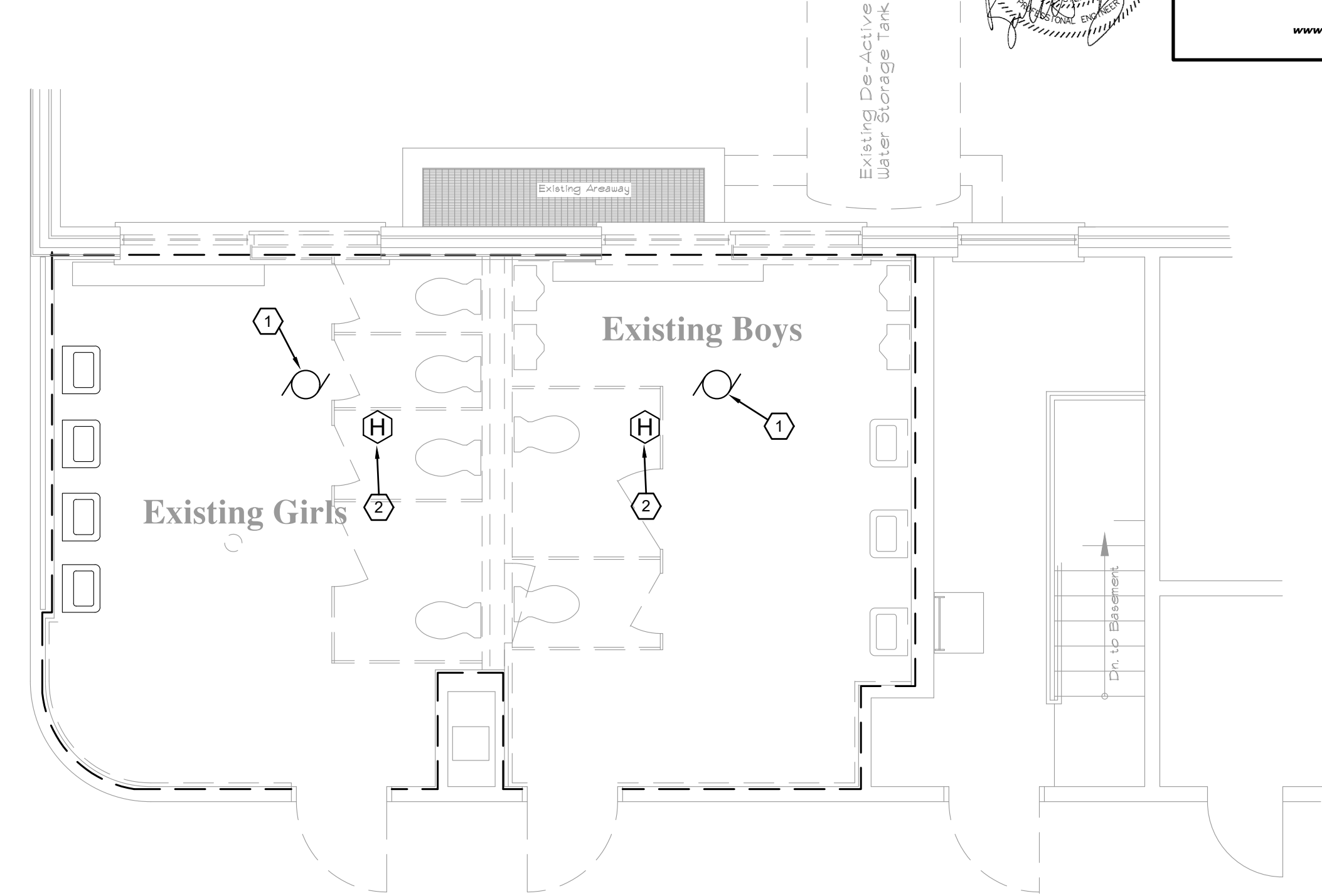


RZ Design Associates, Inc.
**MECHANICAL, ELECTRICAL,
 AND STRUCTURAL ENGINEERING**
 750 OLD MAIN STREET
 SUITE 202
 ROCKY HILL, CT 06067
 P: (860) 436-4336
 F: (860) 436-4450
 www.rzdesignassociates.com



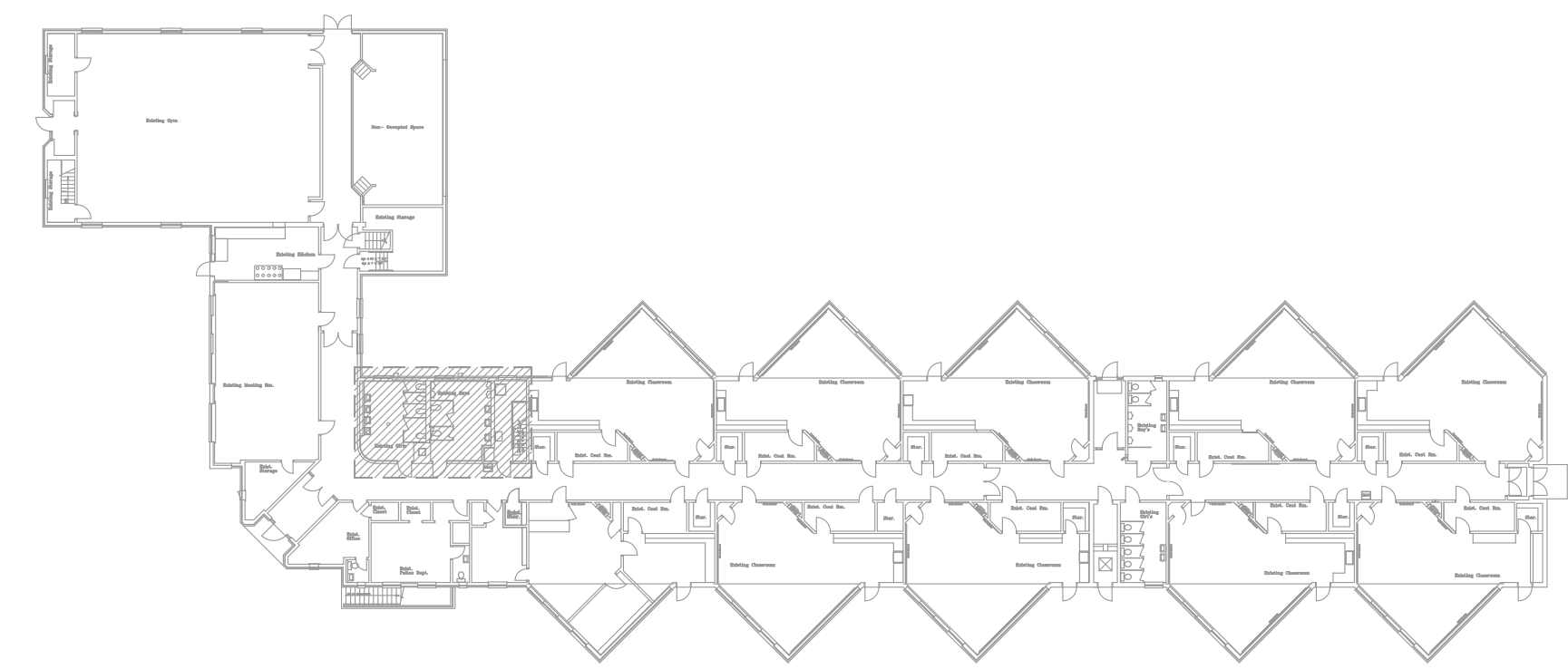
2 FIRST FLOOR NEW WORK PART PLAN
 E-2 SCALE: 1/4" = 1'-0"

- ELECTRICAL POWER NEW WORK NOTES:**
- 1 NEW EXHAUST FAN (SEE MECHANICAL DRAWINGS.) CONNECT TO SWITCHED LEG OF ROOM LIGHTING CIRCUIT.
 - 2 REINSTALL EXISTING HEAT DETECTOR IN NEW CEILING, AND RECONNECT TO EXISTING CIRCUITING.
 - 3 EXISTING PANEL 'PP' TO REMAIN. PROVIDE AND INSTALL ONE (1) NEW 25A-2P CIRCUIT BREAKER.
 - 4 NEW HEAT PUMP OUTDOOR UNIT (SEE MECHANICAL DRAWINGS). ROUTE 2#10-#10G-3/4" C TO NEW 25A-2P C/B IN PANEL 'PP'.
 - 5 NEW HEAT PUMP INDOOR UNIT (TYP. OF 2 - SEE MECHANICAL DRAWINGS). ROUTE 3#14 INTERCONNECTING CABLE (PER MANUFACTURER'S REQUIREMENTS) TO OUTDOOR UNIT.
 - 6 NEW WEATHER RESISTANT, TAMPER RESISTANT, GROUND FAULT CIRCUIT INTERRUPTER DUPLEX RECEPTACLE (NEMA 5-15R) WITH "IN-USE" COVER. CONNECT TO UNSWITCHED LEG OF LOCAL LIGHTING CIRCUIT.



1 FIRST FLOOR DEMOLITION PART PLAN
 E-2 SCALE: 1/4" = 1'-0"

- ELECTRICAL POWER DEMOLITION NOTES:**
- 1 DISCONNECT AND REMOVE EXHAUST FAN CIRCUITING.
 - 2 DISCONNECT AND REMOVE EXISTING HEAT DETECTOR. EXISTING CIRCUITING TO REMAIN. RETAIN DETECTOR FOR REINSTALLATION IN NEW CEILING.



Key Plan Main Level Floor
 No Scale

Date:	
Revisions:	

Fred Marzec - Architects, LLC
 Architects and Planners
 99 Colonel Brown Road
 Griswold, CT. 06351
 Tel: (860) 376-2999
 Email address: fred@fredmarzec.com

Boy's & Girls Restroom Modifications
Fair Oaks School
Community Center
 836 Old Colchester Road Oakdale, CT.

Plans
ELECTRICAL
POWER FLOOR
PLANS

PROJECT NO: 2022-10-22

SCALE:	AS NOTED
DRAWN BY:	DSL
CHECKED BY:	BJZ
DATE:	12/22/2022

E-2

Copyright © 2022 Fred Marzec - Architects, LLC and Fred Marzec - Architects, LLC. They may not be reproduced, stored in a retrieval system, or transmitted in any form or by any means, electronic, mechanical, photocopying, recording, or by any information storage and retrieval system, without the express written consent of Fred Marzec - Architects, LLC.

