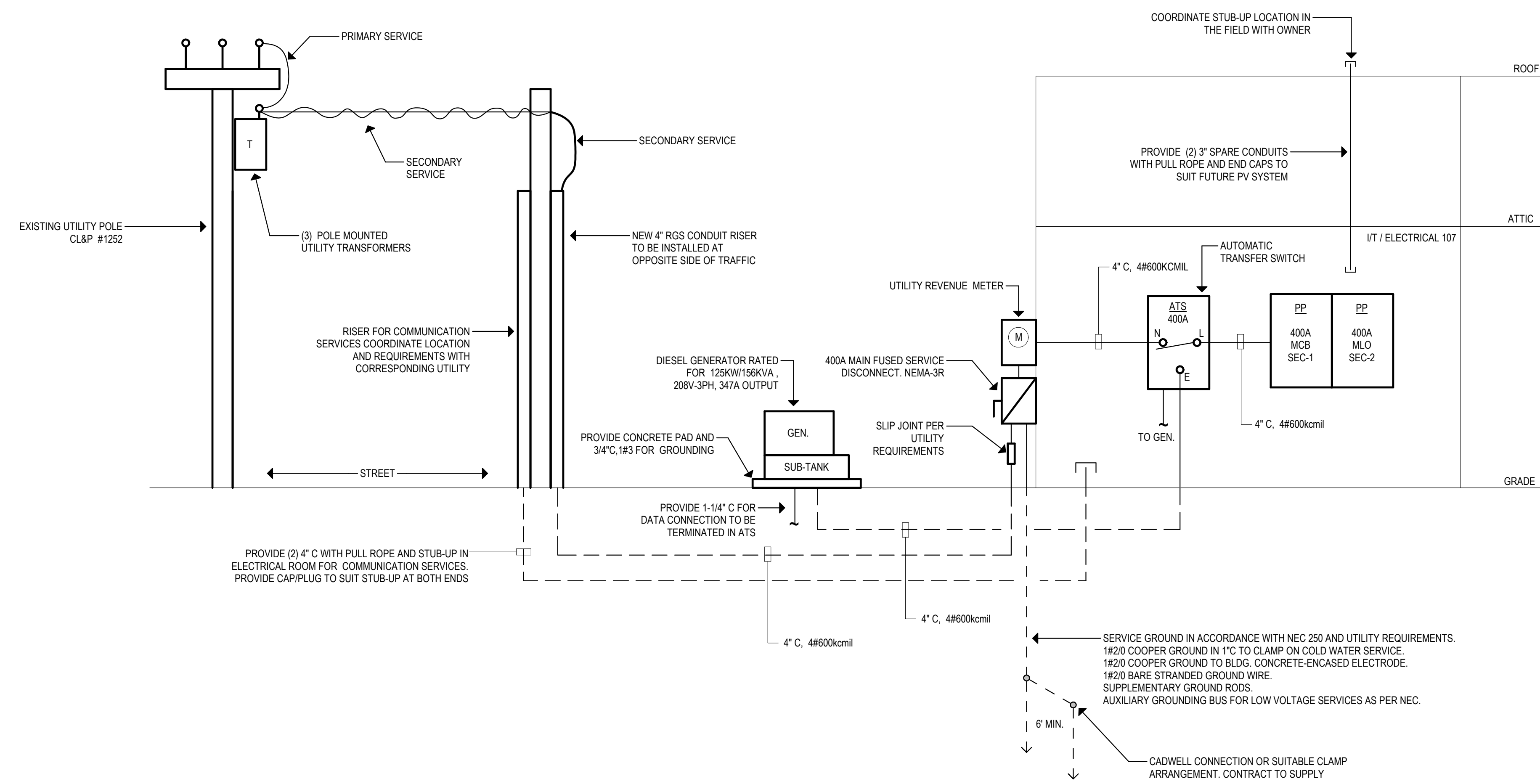


- | GENERAL POWER NOTES | |
|---------------------|---|
| ● | ALL WORK SHALL CONFORM WITH THE ELECTRICAL SPECIFICATIONS AND LATEST ACCEPTED NATIONAL ELECTRICAL CODE (NEC). |
| ● | ALL ELECTRICAL EQUIPMENT INCLUDED BUT NOT LIMITED TO ELECTRICAL PANELS, DISCONNECTS, STARTERS AND VFD TO BE INSTALLED INSIDE SHALL BE MOUNTED ON 3/4" FIRE RATED PLYWOOD BACKBOARD TO BE PROVIDED BY ELECTRICAL CONTRACTOR. |
| ● | PROVIDE UNISTRUT AS REQUIRED TO INSTALL DISCONNECT, VFD OR STARTER NEAR EQUIPMENT AND ACCESSIBLE. |
| ● | FINAL LOCATION OF POWER SHALL BE COORDINATED WITH EQUIPMENT. |
| ● | PROVIDE UNISTRUT AS REQUIRED TO INSTALL DISCONNECT MEANS NEAR EQUIPMENT AND ACCESSIBLE. |
| ● | REFER TO ONE-LINE RISER DIAGRAM ON SHEET E600 FOR ADDITIONAL INFORMATION ON ELECTRICAL EQUIPMENT AND DISTRIBUTION. |

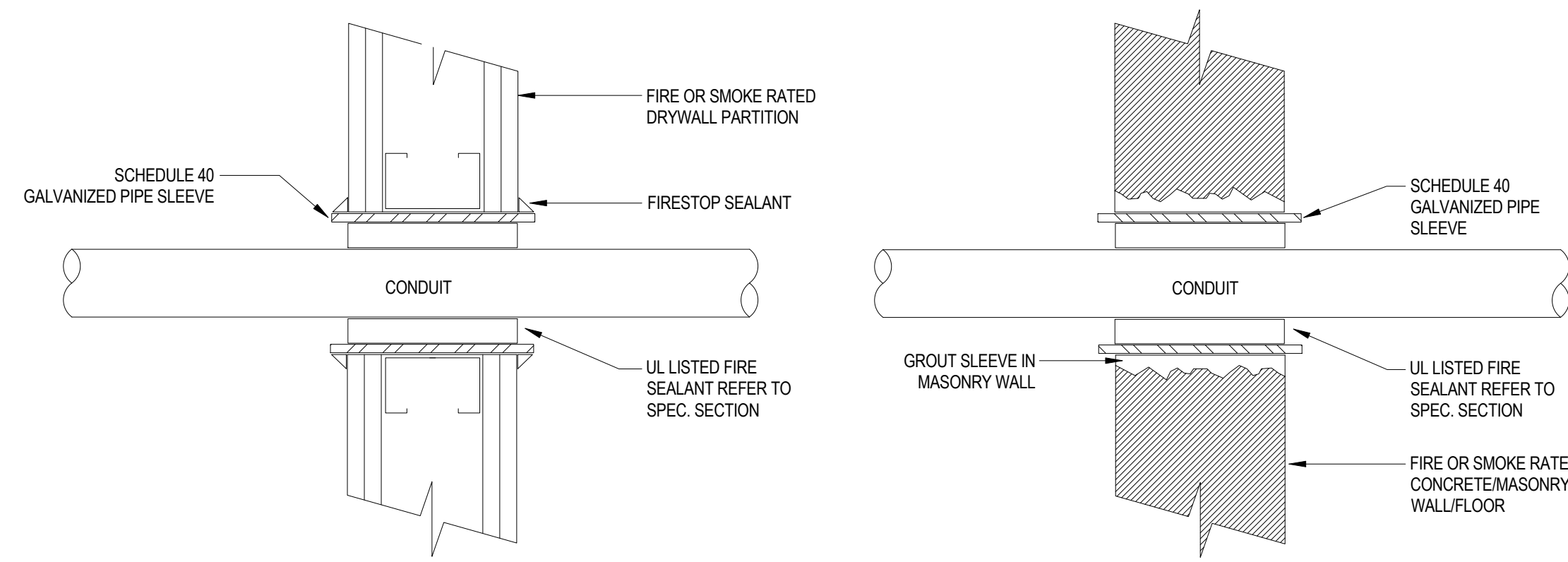
1 ELECTRICAL ATTIC POWER PLAN
 1/4" = 1'-0"



1 Electrical One-Line Riser Diagram
12" = 1'-0"

CONDUCTOR NOTES:

1. ALL VALUES BASED ON COPPER CONDUCTORS.
2. **FEEDERS**
UPGRADE WIRE TO MAINTAIN MAXIMUM OF 2% VOLTAGE DROP.
3. **BRANCH CIRCUITS**
UPGRADE WIRE TO MAINTAIN MAXIMUM OF 3% VOLTAGE DROP.
4. NUMBER OF WIRES SHALL BE DETERMINED WITH EQUIPMENT ELECTRICAL NAMEPLATE CHARACTERISTICS.
5. WHERE NEUTRALS ARE REQUIRED, IT SHALL MATCH FEEDER CONDUCTOR SIZE.
6. USE CONDUCTOR (THW/THHN) (3PH, 3W) WITH GROUND PRIMARY FEEDER FOR TRANSFORMERS.

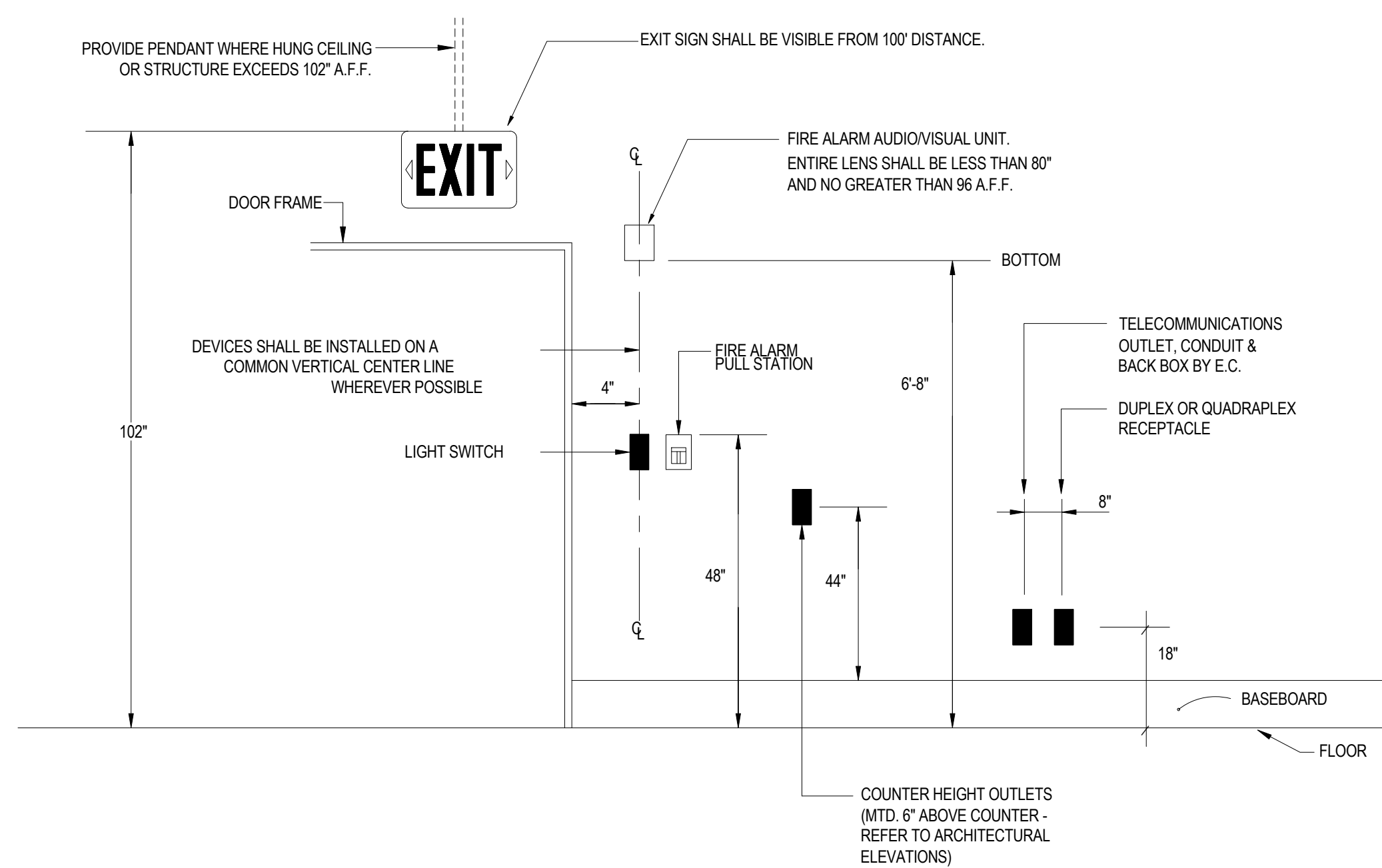


1 WALL/FLOOR PENETRATION W/FIRE-SMOKE SEAL DETAIL

NOT TO SCALE

GENERAL NOTES:

1. PROVIDE UL LISTED FIRE/SMOKE PENETRATION ASSEMBLY IN ACCORDANCE W/ UL 1479, ASTM E814 REQUIREMENTS FOR WALL TYPE, RATING, PIPE SIZE INSTALLED.
2. FIRE STOPPING SHALL HAVE A RATING EQUAL TO OR GREATER THAN THE WALL/FLOOR BEING PENETRATED - SEE SPECIFICATIONS. REFER TO ARCHITECTURAL CODE DRAWINGS FOR WALL/FLOOR RATINGS AND LOCATIONS.
3. AT NON-RATED ASSEMBLIES INFILL ANNULAR VOID WITH MINERAL WOOL AND CAP WITH SEALANT.



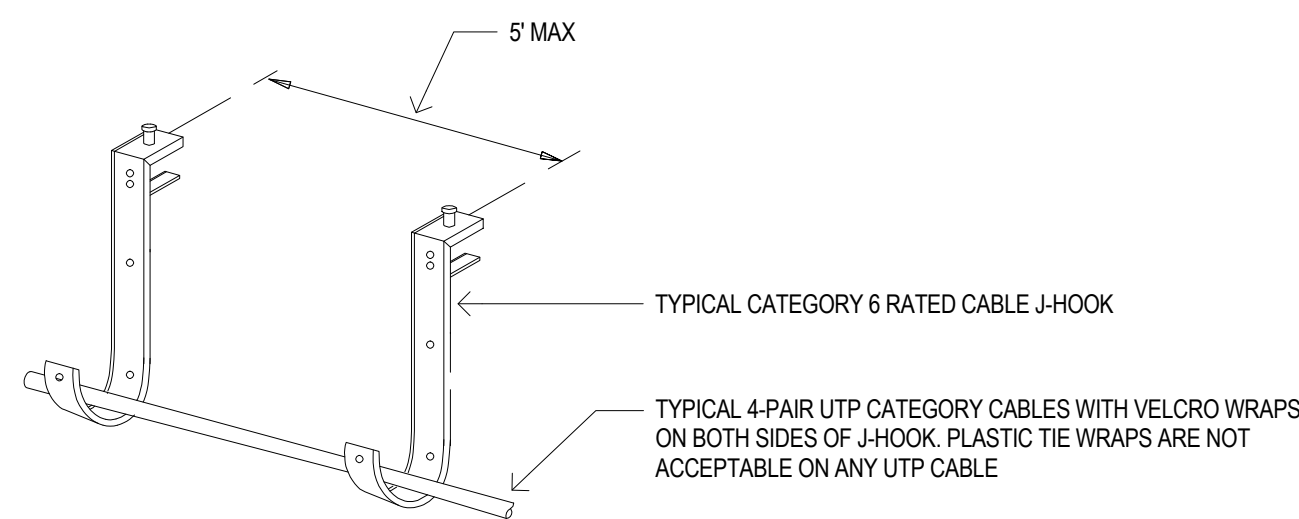
2 OUTLET MOUNTING DETAIL

NOT TO SCALE

(TYP. ALL OUTLETS UNLESS OTHERWISE NOTED.)

NOTES:

1. ALL MOUNTING HEIGHTS SHALL BE MEASURED FROM FIN. FLOOR TO CENTERLINE OF DEVICE (EXCEPT FOR EXIT SIGNS, FIRE ALARM PULL STATION AND LIGHTING SWITCH).
2. DEVICES SHALL BE INSTALLED ON A COMMON VERTICAL CENTERLINE WHEREVER POSSIBLE.
3. ALL DEVICES SHALL BE INSTALLED AT THE MOUNTING HEIGHTS INDICATED ON THIS DETAIL, UNLESS OTHERWISE NOTED. REFER TO ARCHITECTURAL INTERIOR ELEVATIONS FOR MOUNTING HEIGHTS OF RECEPTACLES LOCATED ABOVE COUNTERS.
4. THE LOCATION OF WALL OUTLETS ARE DIRECTLY RELATED TO THE FURNITURE LOCATION. SPECIAL ATTENTION SHALL BE GIVEN TO LOCATING OUTLETS PER THIS DETAIL. DO NOT INSTALL OUTLETS BACK TO BACK.

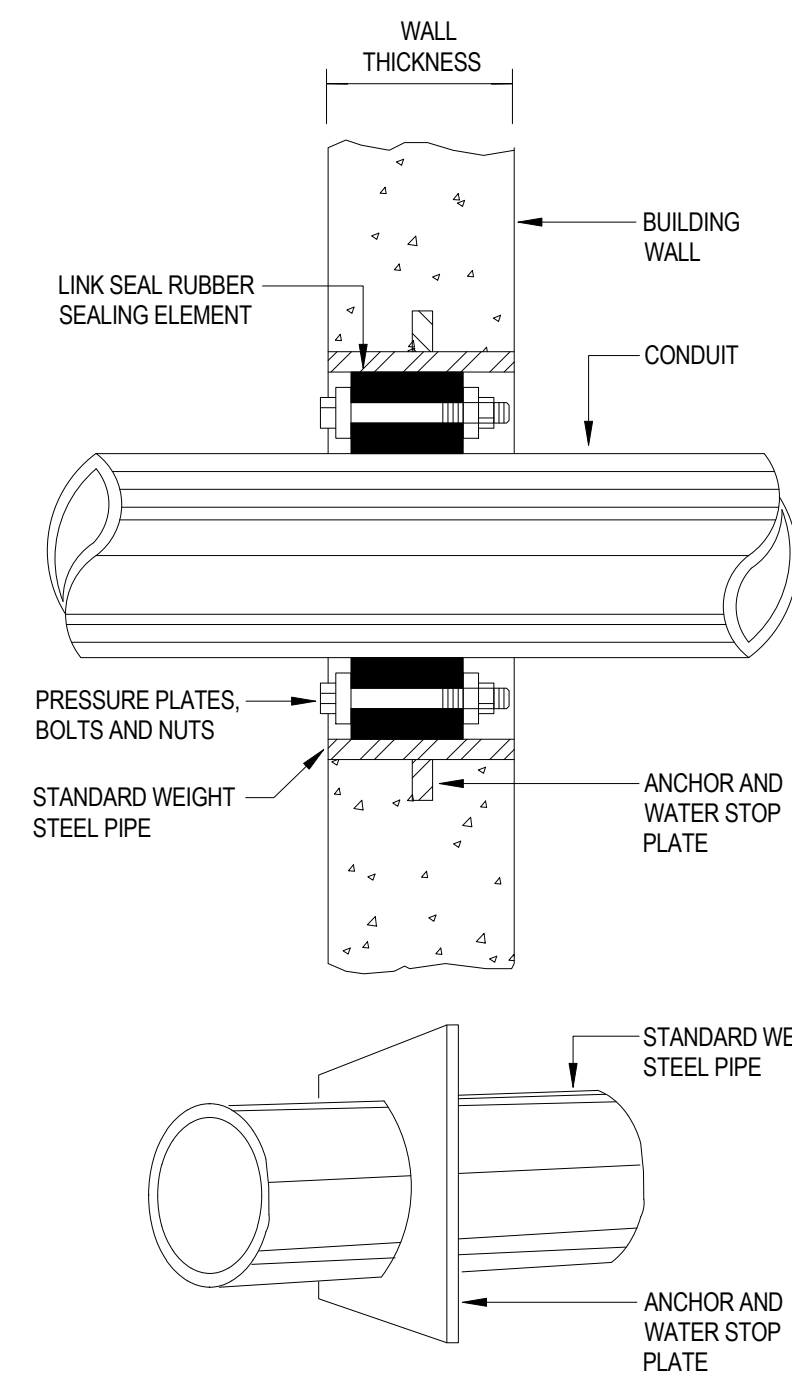


3 TYPICAL DATA J-HOOK INSTALLATION

NOT TO SCALE

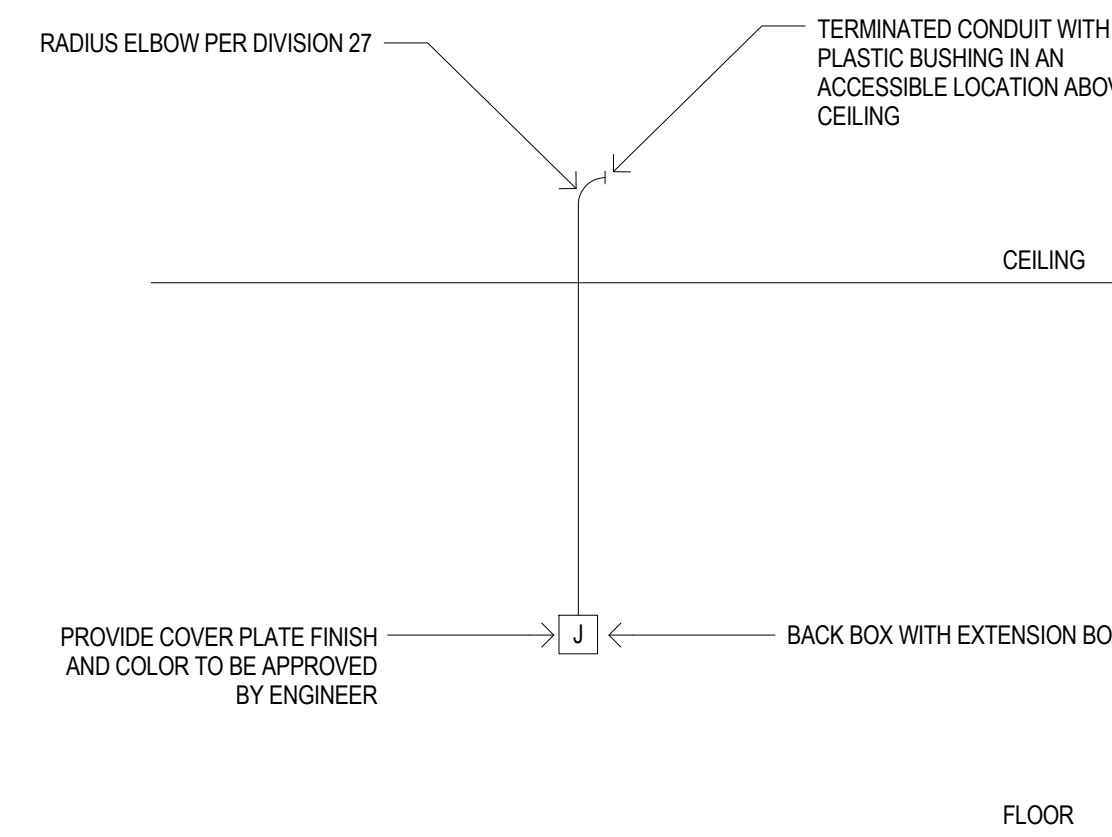
NOTES:

1. J-HOOKS SHALL BE SIZED TO ACCOMMODATE TWICE AS MANY CABLES REQUIRED TO BE SUPPORTED INCLUDING AN ADDITIONAL 40% HEADROOM.



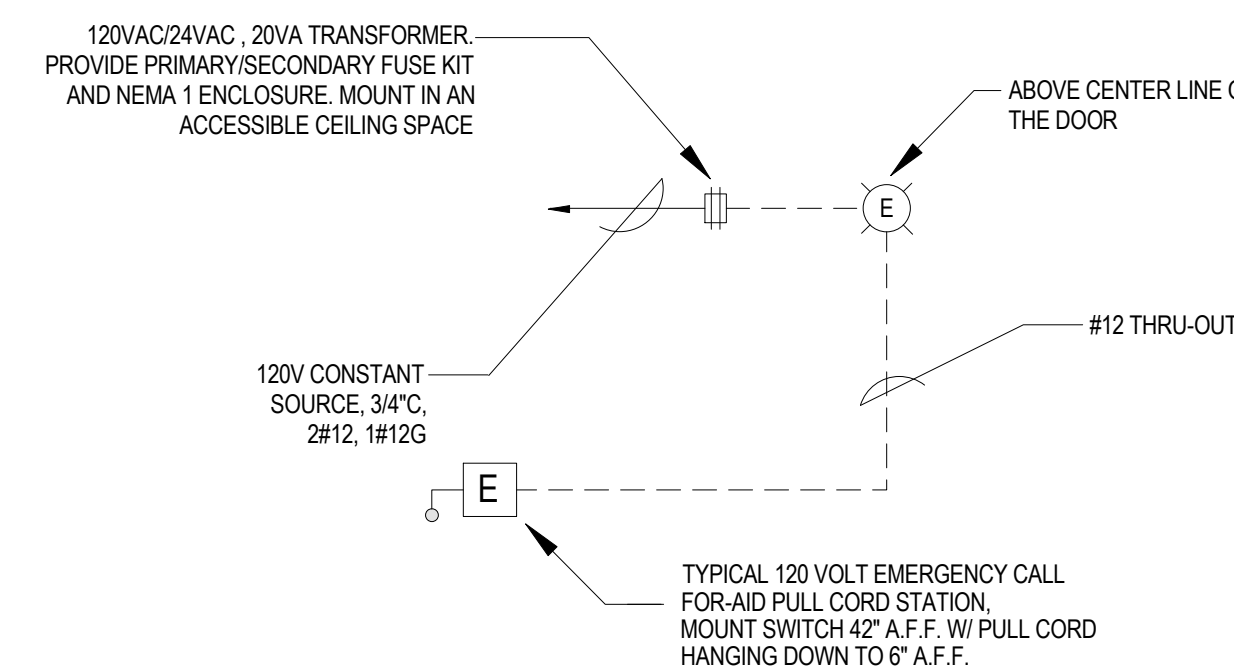
4 WATER-TIGHT WALL SLEEVE

NOT TO SCALE



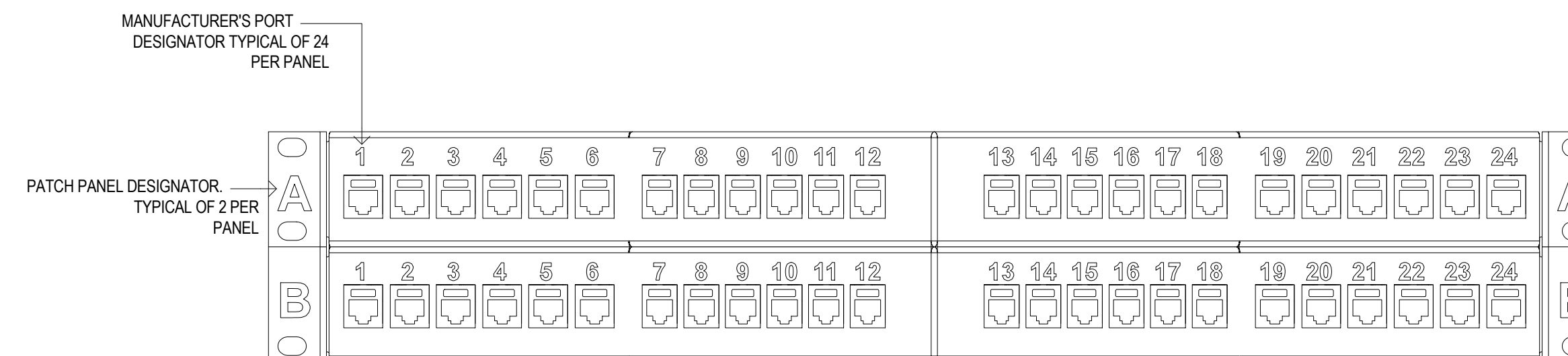
5 DATA OUTLET RECESSED RACEWAY DETAIL

NOT TO SCALE



6 HANDICAPPED CALL-FOR-AID SYSTEM

NOT TO SCALE

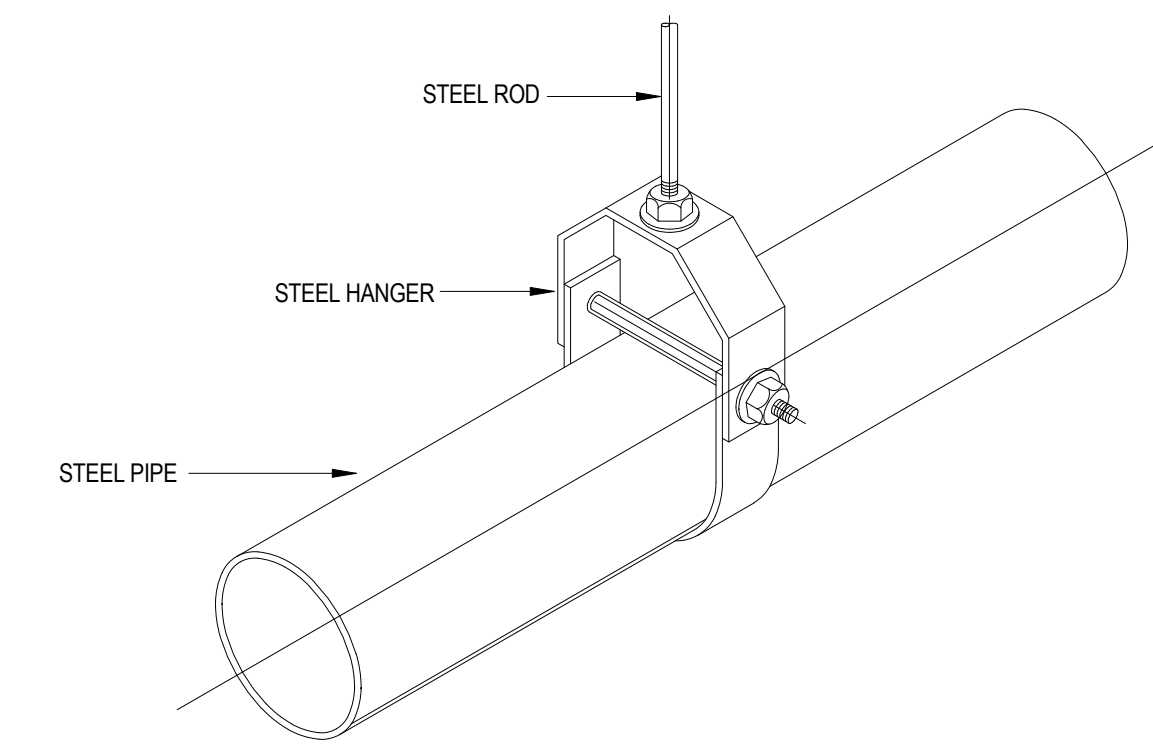


7 COMMUNICATION PATCH PANEL - DATA LABELING

NOT TO SCALE

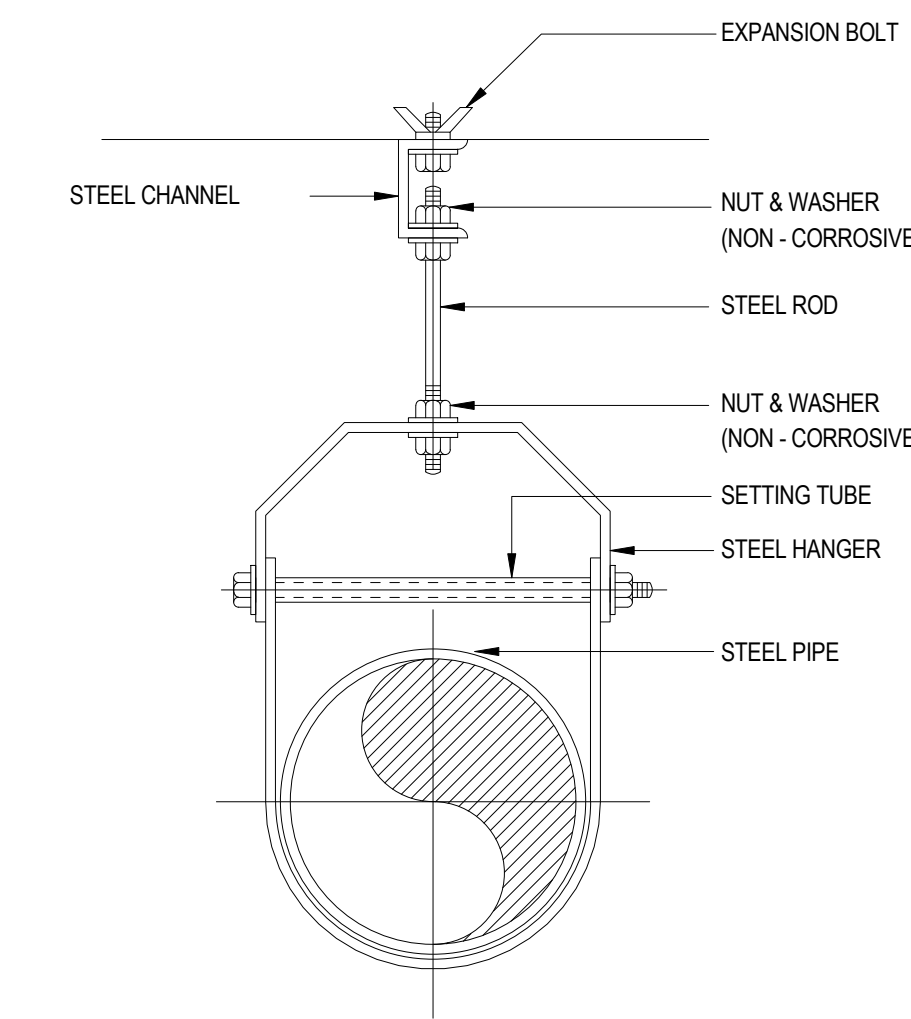
NOTES:

1. LABEL PATCH PANELS FROM TOP TO BOTTOM AS "A", "B", "C", "D" AS REQUIRED. REQUIRED ON LEFT AND RIGHT SIDE OF PATCH PANEL AS SHOWN.
2. CONTRACTOR MUST CONFIRM LABELING SCHEME WITH THE OWNER PRIOR TO TESTING AND FINAL LABELING OF ALL VOICE, DATA CABLING.



8 PIPE HANGER DETAIL

NOT TO SCALE

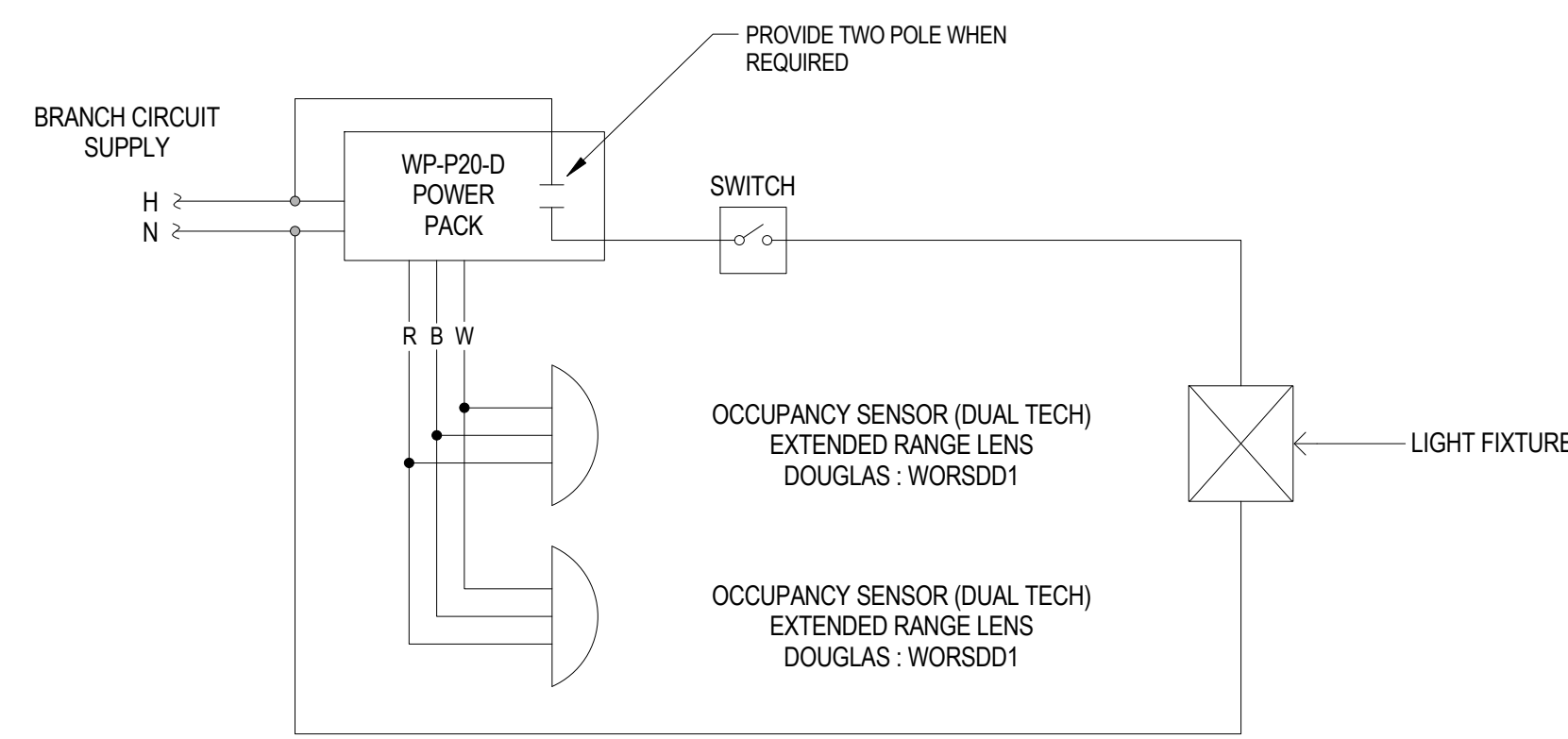


9 PHONE & DATA NETWORK DIAGRAM

NOT TO SCALE

NOTES:

1. CONTRACTOR IS RESPONSIBLE FOR SUPPLYING AND INSTALLING ALL EQUIPMENT, CATS WIRING, AND WIRING FROM CORRESPONDING IT CABINET OR TERMINAL TO EACH OUTLET/DROP LOCATION.
2. PHONE AND DATA SYSTEMS SHALL BE INSTALLED AND TESTED. TESTING OF CAT 6 CABLES AND INSTALLATION AND IDENTIFICATION OF JACKS AT LOCATIONS SHOWN ON DRAWINGS, TERMINATION OF CABLES AT CABINET MOUNTED PATCH AND SWITCH PANELS. INSTALLATION AS LISTED ABOVE INDICATES RESPONSIBILITY TO FURNISH, INSTALL, TEST AND WARRANTY THE ITEM.

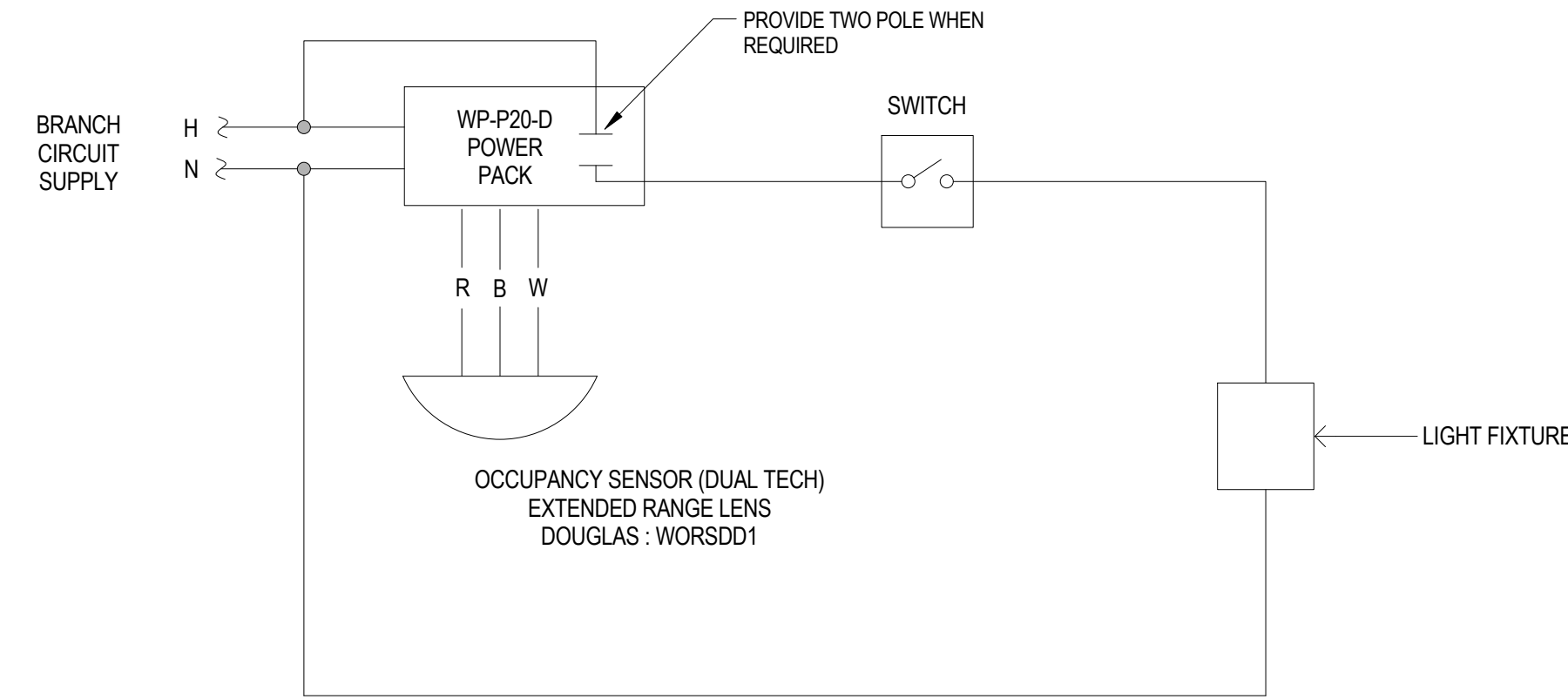


1 CEILING MULTIPLE OCCUPANCY SENSOR DETAIL

NOT TO SCALE

NOTE:

1. TYPICAL CEILING OCCUPANCY SENSOR SUIT CORRIDORS AND ROOMS WITHOUT DAYLIGHT PHOTSENSOR AND DIMMING SWITCHES
2. EXACT QUANTITY OF DEVICES MAY DIFFER FROM THIS DETAIL. CONTRACTOR SHALL PROVIDE ACTUAL QUANTITY REQUIRED. REFER TO LIGHTING FLOOR PLAN.
3. OCCUPANCY SENSOR WITH LETTER "W" NEXT TO SYMBOL ARE TO BE CORNER/WALL MOUNTED.

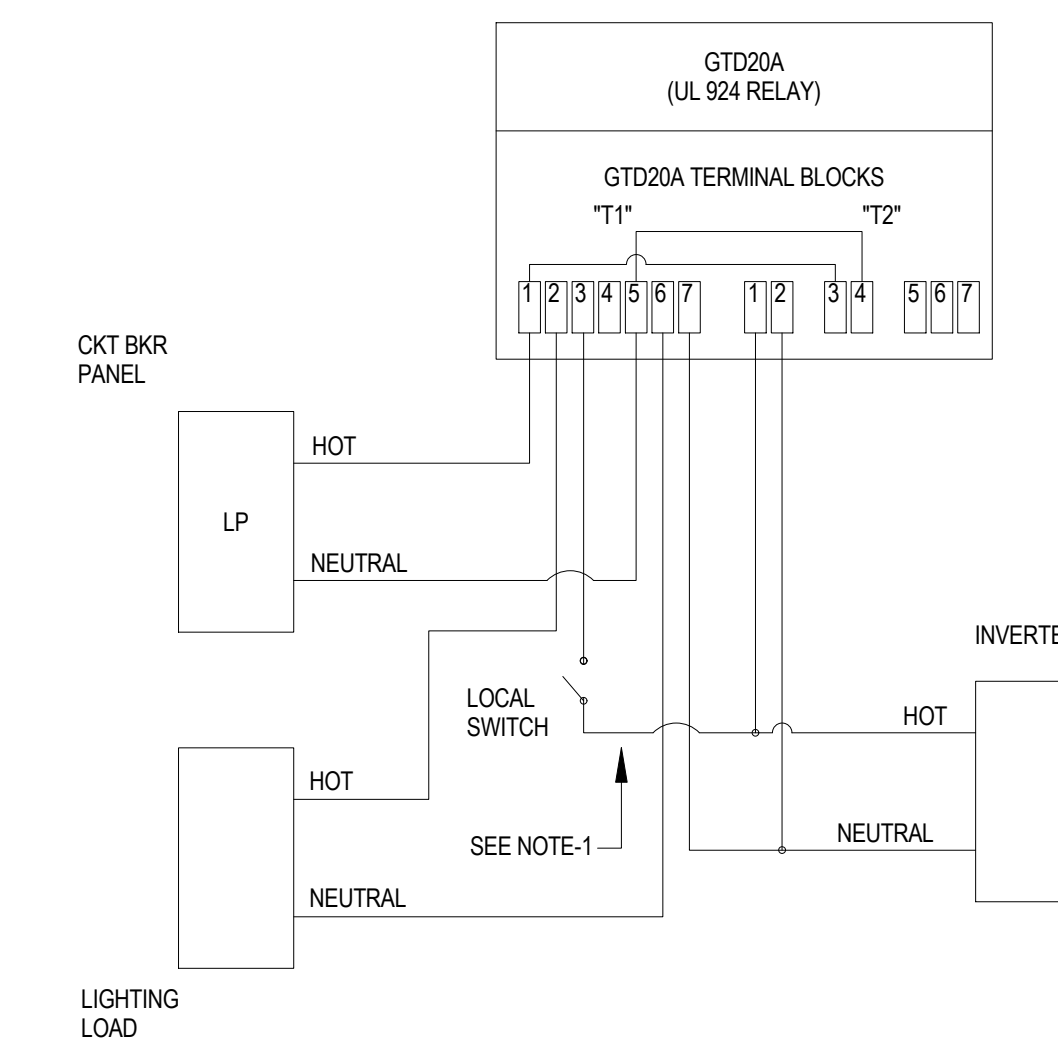


3 CEILING OCCUPANCY SENSOR DETAIL

NOT TO SCALE

NOTE:

1. TYPICAL CEILING OCCUPANCY SENSOR SUIT CORRIDORS AND ROOMS WITHOUT DAYLIGHT PHOTSENSOR AND DIMMING SWITCHES
2. EXACT QUANTITY OF DEVICES MAY DIFFER FROM THIS DETAIL. CONTRACTOR SHALL PROVIDE ACTUAL QUANTITY REQUIRED. REFER TO LIGHTING FLOOR PLAN.
3. OCCUPANCY SENSOR WITH LETTER "W" NEXT TO SYMBOL ARE TO BE CORNER/WALL MOUNTED.



5 TYPICAL UL924 RELAY WIRING DIAGRAM

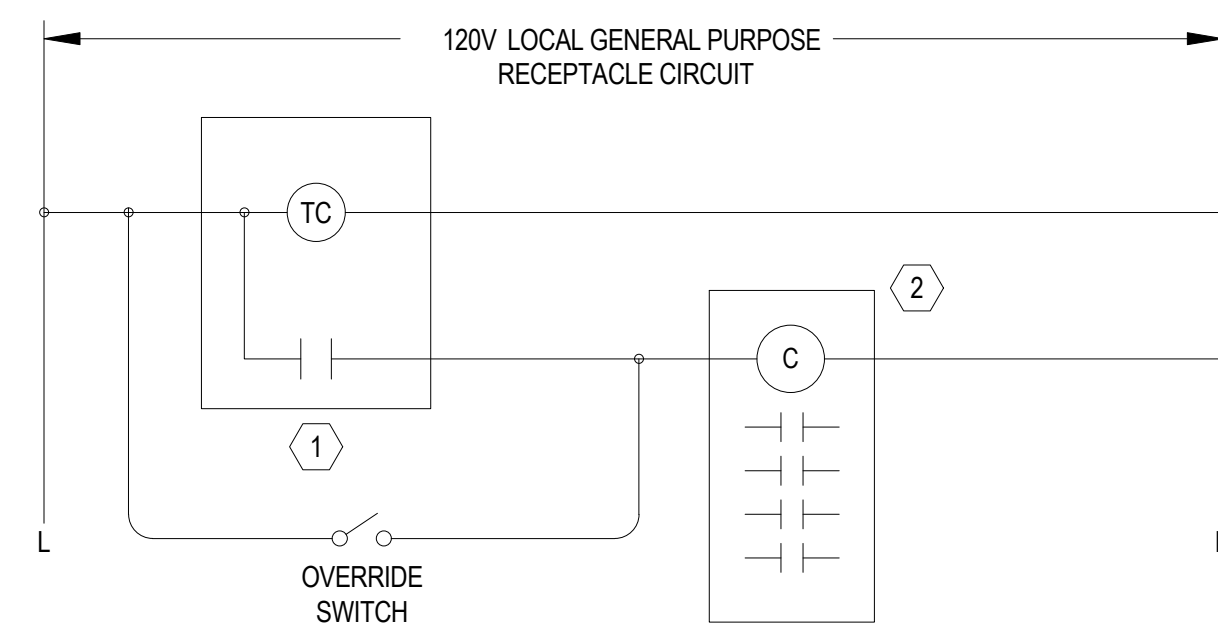
NOT TO SCALE

EMR

UL924 RELAY NOTES

NOTES:

1. FOR EMERGENCY FIXTURES THAT WILL ONLY COME ON UPON LOSS OF NORMAL POWER, DO NOT WIRE HOT LEG OF NORMAL CKT BKR TO TERMINAL BLOCK T1.

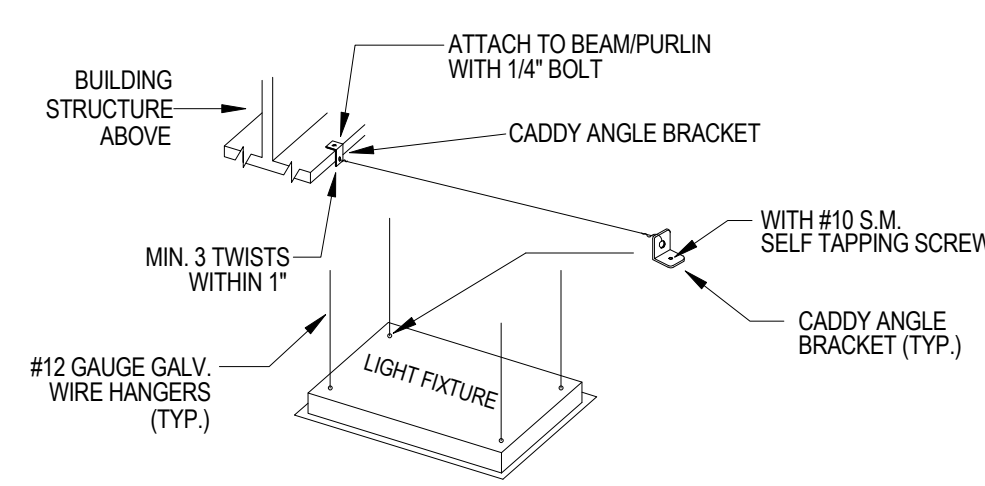


2 LIGHTING TIME CLOCK AND CONTACTOR DIAGRAM

NOT TO SCALE

TAG	DESCRIPTION	MODEL NO.	REMARKS
1	DIGITAL PROGRAMMABLE TIME CLOCK 24HR, TDAY 365DAY, SEASONAL SCHEDULING, 99 ON/OFF POINTS, PERMANENT SCHEDULE RETENTION ON POWER LOSS, POWER OUTAGE BACKUP, AUTOMATIC LEAP YEAR AND DAYLIGHT SAVINGS TIME ADJ., MECHANICALLY HELD CONTACTS, MULTI VOLTAGE INPUT.	TORK 02510A OR EQUIVALENT INTERMATIC OR SQUARE D	1,2
2	CONTACTOR ELECTRICALLY OPERATED, MECHANICALLY HELD, 20A LIGHTING CONTACTOR, CONTROL VOLTAGE AS LISTED, FROM LOCAL GENERAL PURPOSE RECEPTACLE CIRCUIT.	ASCO 917 SERIES WITH 2 WIRE CONTROL OPTION OR EQUIVALENT GE OR SQUARE D	

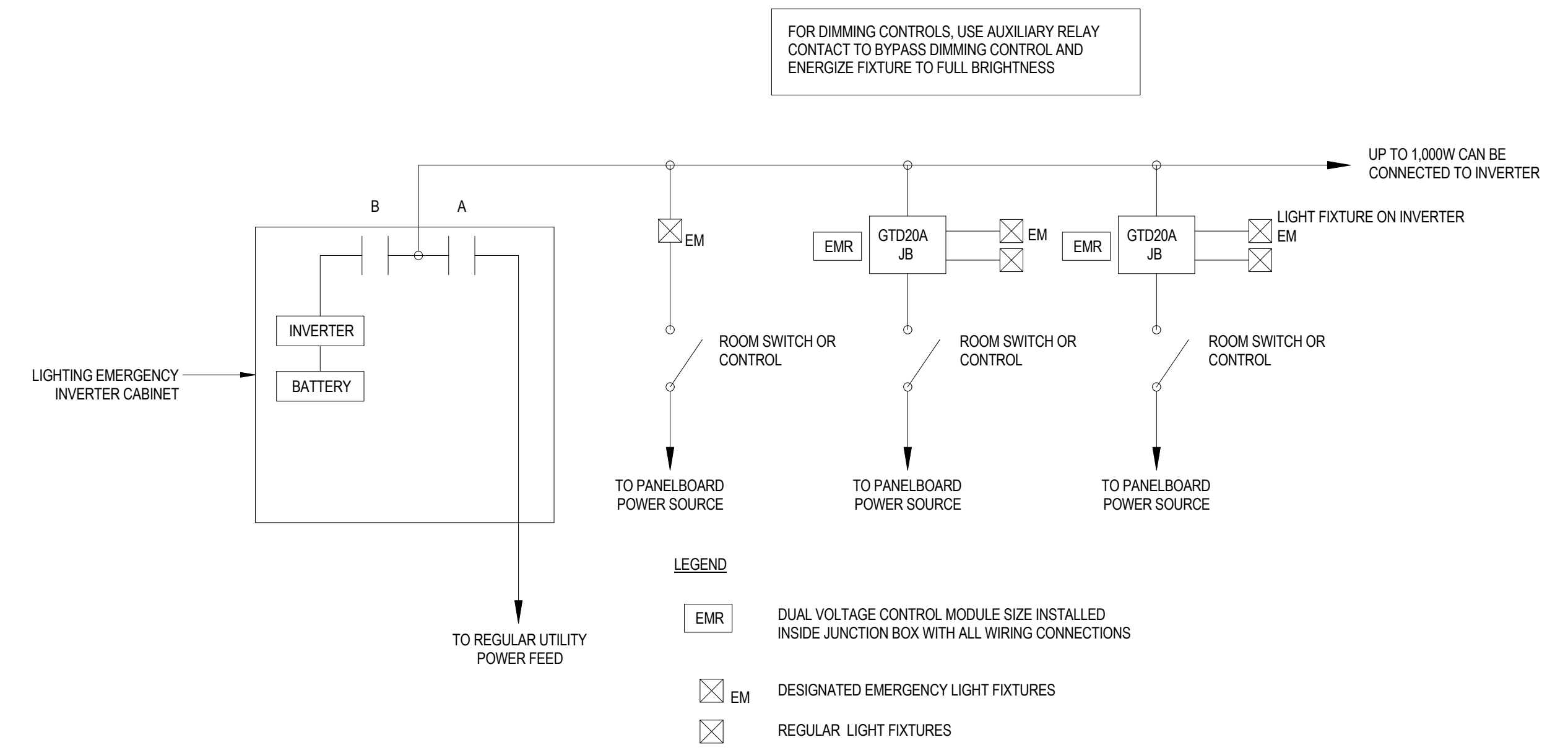
NOTES:
 1. TIMECLOCK SHALL BE PROGRAMMED TO TURN SITE LIGHTING ON AT DUSK (1/4 PHOTOCELL) AND OFF AT 10PM DAILY AS PER TOWN ZONING REQUIREMENTS.
 2. LOCATE TIME CLOCK ADJACENT TO ELECTRICAL PANEL.



4 TYPICAL LAY-IN GRID LIGHTING FIXTURE SUPPORT/MOUNTING DETAIL

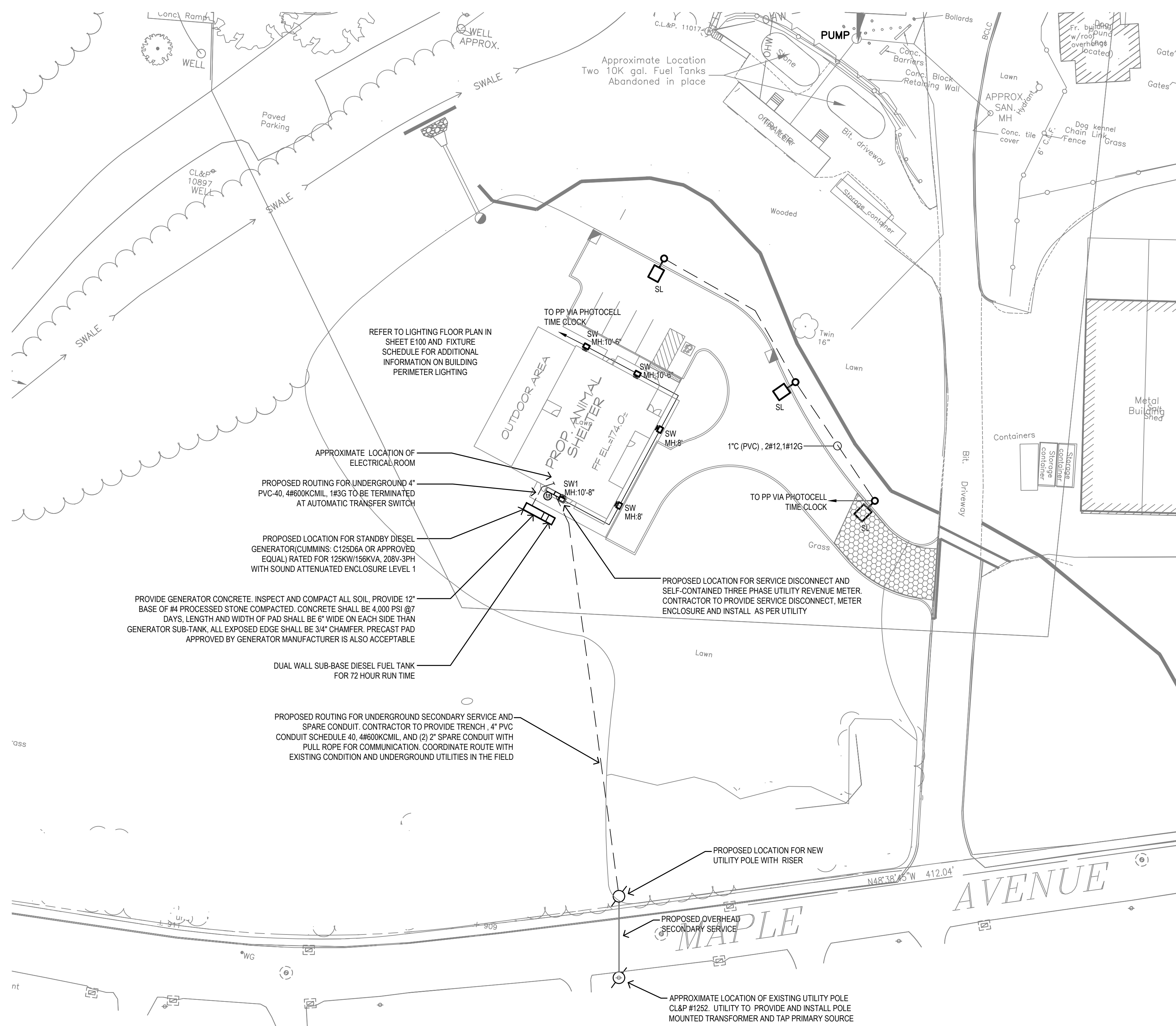
NOT TO SCALE

1. ALL LIGHTING FIXTURES SHALL BE SECURED TO THE STRUCTURE BY THE ELECTRICAL CONTRACTOR.
2. FLUSH OR RECESSED LIGHT FIXTURES LESS THAN 56 POUNDS SHALL HAVE 2 - 12 GA. SLACK SAFETY WIRES FROM DIAGONAL CORNERS TO BUILDING STRUCTURE BY TRADE CONTRACTOR.
3. FLUSH OR RECESSED LIGHT FIXTURES MORE THAN 56 POUNDS SHALL HAVE 4 - 12 GA. SLACK SAFETY WIRES FROM DIAGONAL CORNERS TO BUILDING STRUCTURE BY TRADE CONTRACTOR.
4. SECURE SURFACE MOUNTED LIGHT FIXTURES W/ MINIMUM OF 2 - POSITIVE CLAMPING DEVICES OF 1/4 GA. MINIMUM STEEL AND W/ 12 GA. WIRE TO BUILDING STRUCTURE.



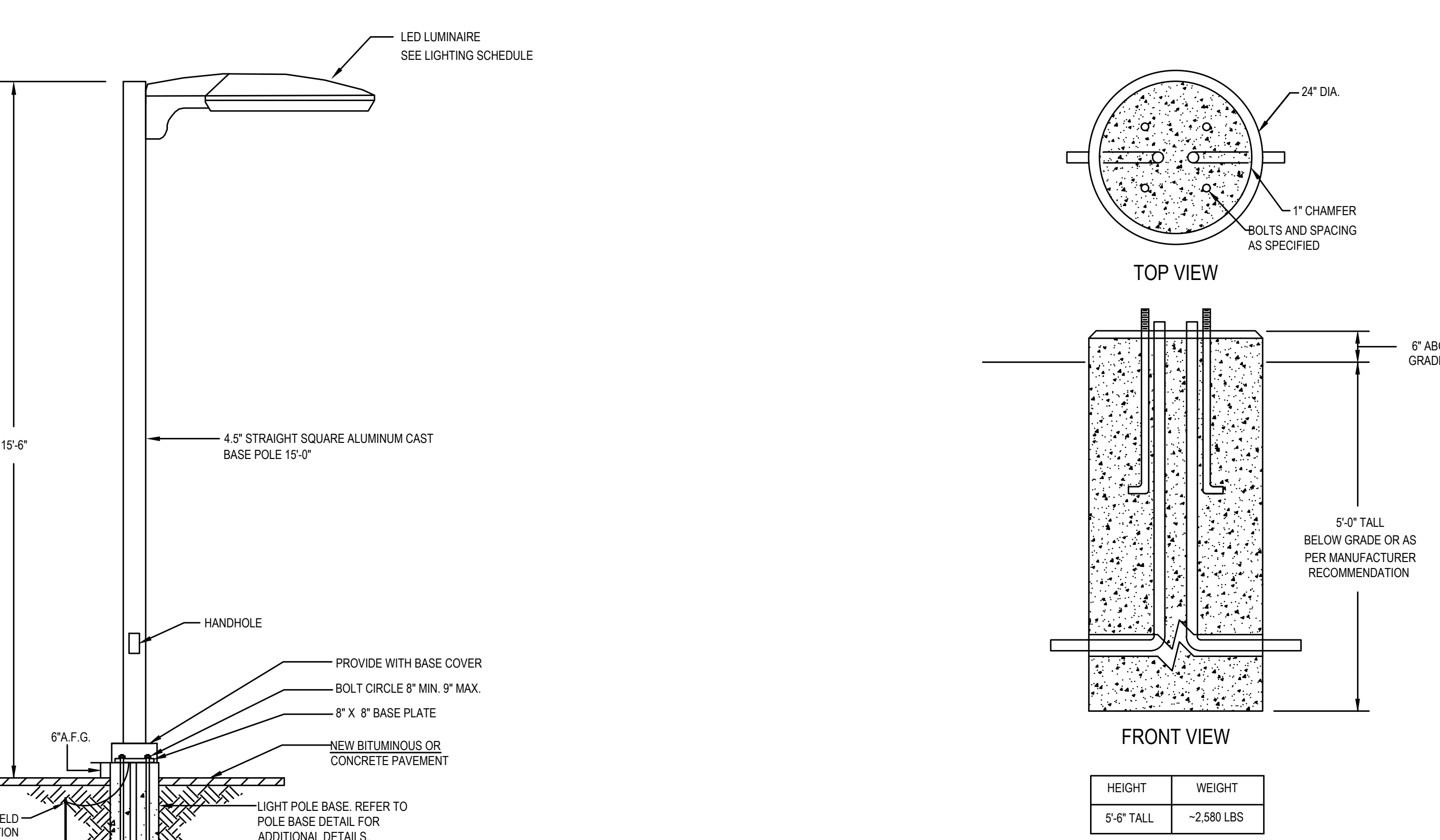
6 INVERTER POWER LINE DIAGRAM

NOT TO SCALE



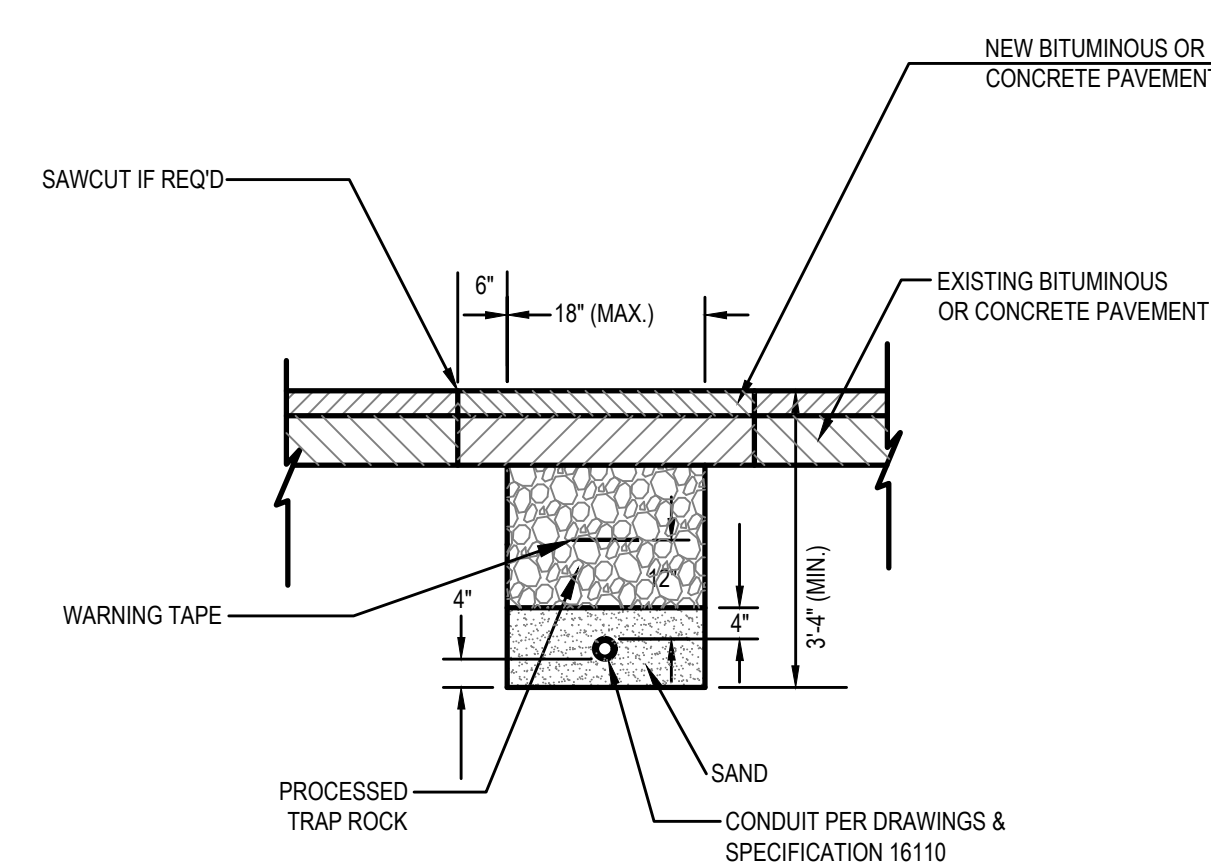
1 ELECTRICAL SITE PLAN
1"=30'-0"

LIGHTING FIXTURE SCHEDULE										
SYMBOL	DESIGNATION	DESCRIPTION	MANUFACTURER/ MODEL NUMBER	LAMP			ELECTRICAL			NOTES
				TYPE	COLOR TEMP	NO	BALLAST	VOLTAGE	WATTS	
□	SL	SMALL 16.76" LED SQUARE SINGLE HEAD LIGHT TYPE-3 DISTRIBUTION	BEACON VP-1-16SL-35-4K3-3-UNV-A-PC	LED	4,000	-	ELECTRONIC	UNV.	36.8	(1) (4)
□	SW	BUILDING PERIMETER LED COMPACT WALL PACK LIGHT TYPE-4 DISTRIBUTION	HUBBELL TRP2-24L-30-4K3-4-UNV-PC	LED	4,000	-	ELECTRONIC	UNV.	27.9	(1) (4)
□	SW1	BUILDING PERIMETER LED COMPACT WALL PACK LIGHT TYPE-3 DISTRIBUTION	HUBBELL TRP2-24L-30-4K3-3-UNV-PC	LED	4,000	-	ELECTRONIC	UNV.	27.9	(1) (4)



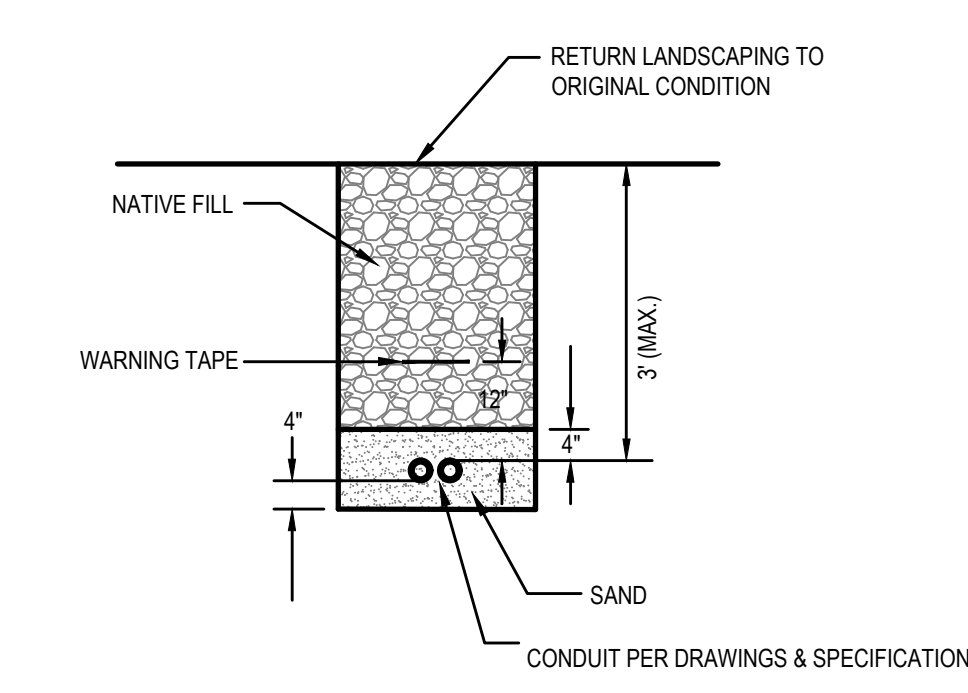
1 POLE MOUNTED LUMINAIRE DETAIL
NOT TO SCALE

2 LIGHTING POLE BASE DETAIL
NOT TO SCALE

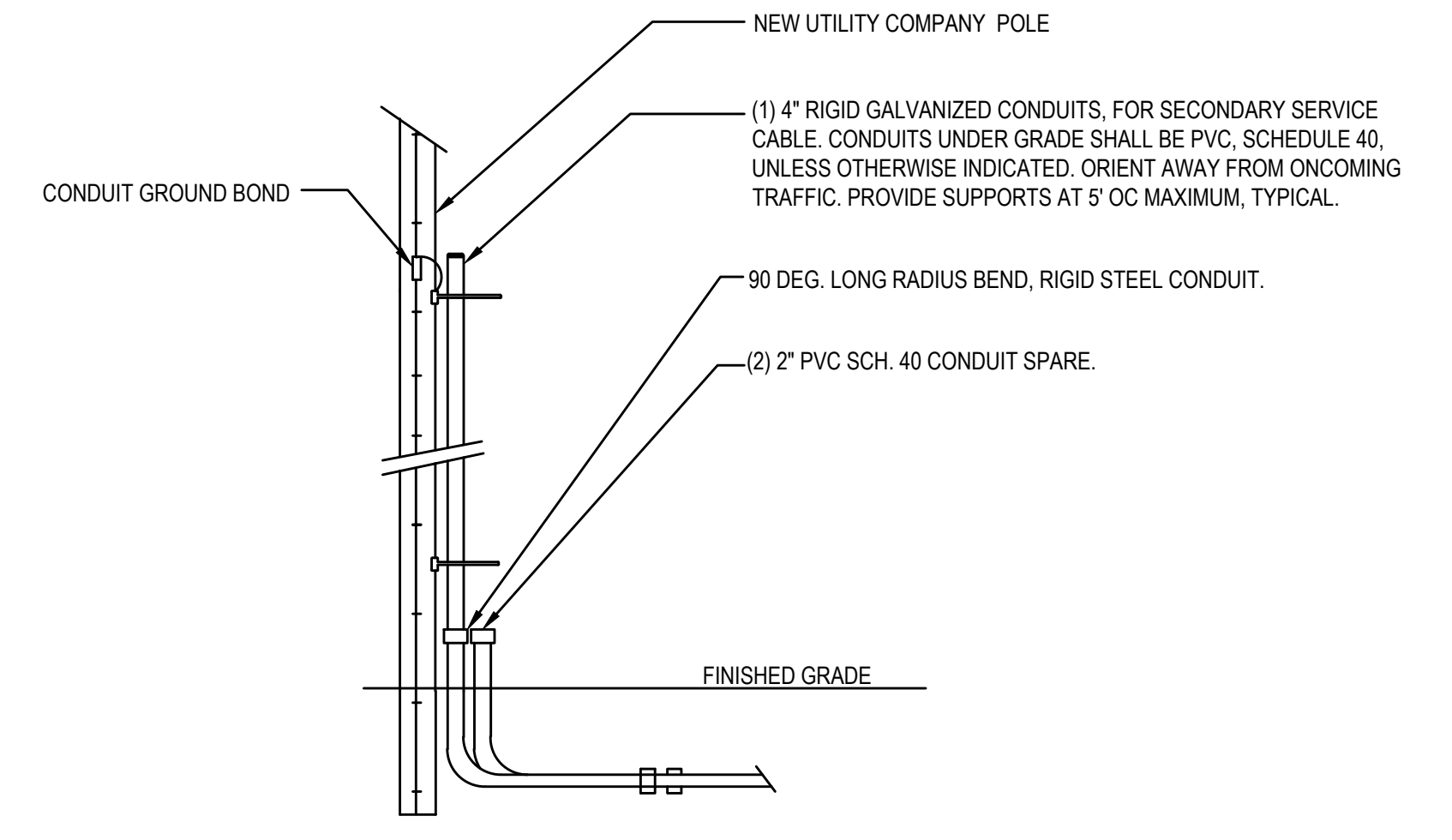


3 TYPICAL TRENCHING AND BACKFILLING DETAIL
NOT TO SCALE

- NOTES:
- FOR NEW BITUMINOUS PROVIDE: 1-1/2" COMPACTED BITUMINOUS CONCRETE CLASS 2 OVER 2-1/2" BITUMINOUS CONCRETE CLASS 1.



4 TYPICAL TRENCHING AND BACKFILLING DETAIL
NOT TO SCALE



5 SERVICE POLE DETAILS
NOT TO SCALE

CALL BEFORE YOU DIG
1-800-922-4455 OR 811
CALL NO LESS THAN TWO FULL WORKING DAYS AND NO MORE THAN 30 DAYS
PRIOR TO START OF EXCAVATION MONDAY THRU FRIDAY, 7AM TO 5PM

Project Title:
**New Animal Facility at:
Montville Animal Shelter**
225 Maple Ave.
Montville, CT

SILVER PETRUCELLI + ASSOCIATES
3190 WHITNEY AVENUE HAMDEN CT 06518
311 STATE STREET NEW LONDON CT 06320
203 230 9007 silverpetrucelli.com

Revision:	Description:	Date:	Revised By:

Drawing Title:
ELECTRICAL SITE PLAN

Date: 09/29/2023
Scale: AS NOTED
Drawn By: JRP
Project Number: 23-130
Drawing Number: **ES100**

1/19/2022 10:06:22 AM