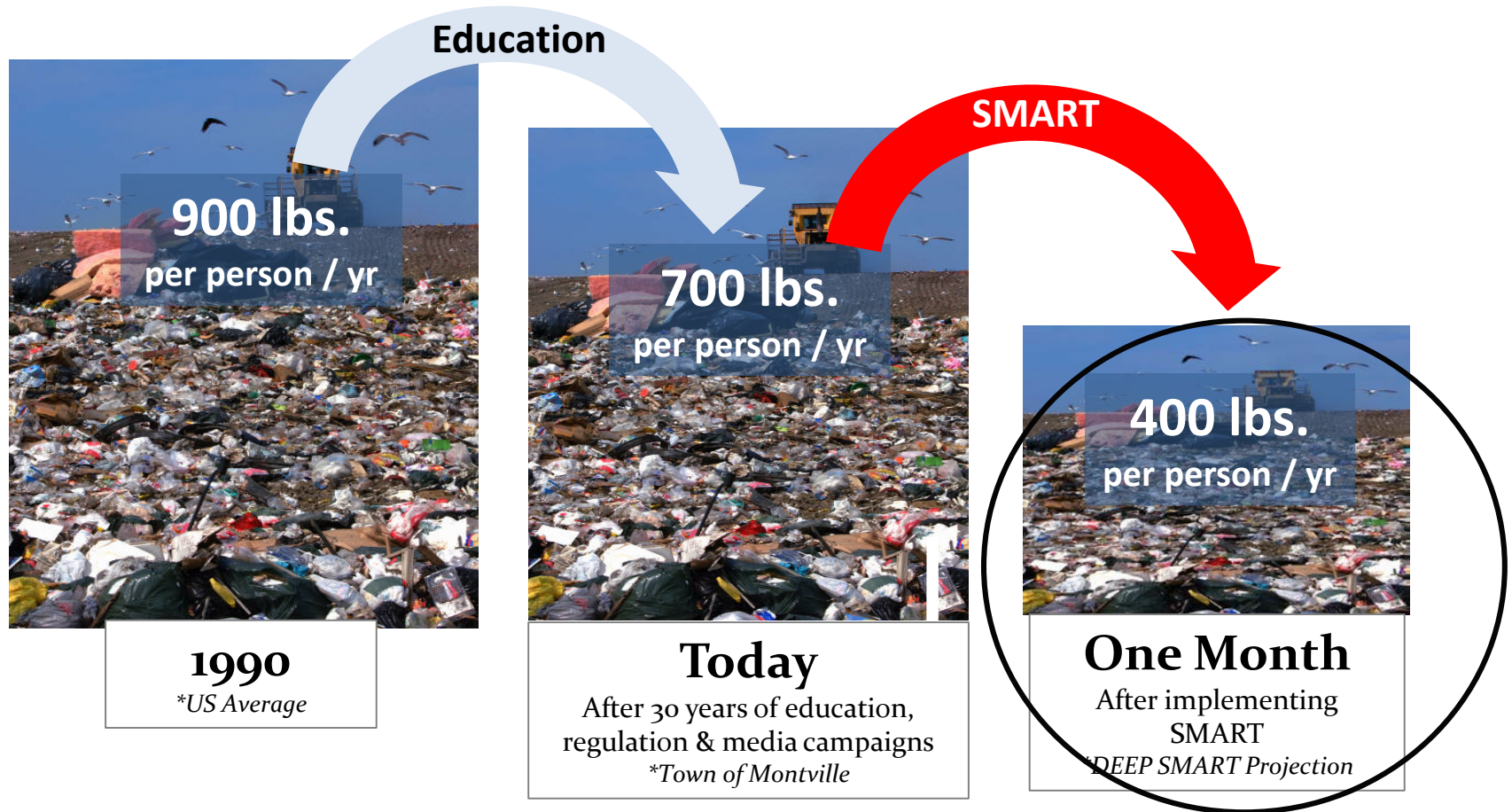


Estimated Waste Reduction with SMART: 44%

Montville is considering a SMART trash program which would provide an annual benefit of approximately \$70,000 and create equity for all residents.



(Above) Annual Pounds of Residential Solid Waste Disposal per Person Montville 1990-Today

SMART Facts for Montville

- ✓ Will reduce Transfer Station disposal costs by \$44,000 annually
- ✓ Will reduce Transfer Station solid waste by 45% and increases recycling.
- ✓ Will reduce reliance on incineration and exposure to price hikes
- ✓ Will provide equity to residents that don't utilize the transfer station
- ✓ Will allow residents to control personal spending on waste
- ✓ Is the single greatest step to reducing the town's global carbon impact

SMART In Action in New England

- 556 Communities in New England operate SMART programs¹
- SMART Communities in MA throw away 40-50% less than communities without SMART (there are no exceptions)²
- High levels of program compliance with no increase in illegal dumping³
- 79% of residents surveyed in SMART programs have a favorable opinion of SMART⁴

“The political challenge of SMART pricing may seem difficult on the surface, but 50 percent diversion means 50 percent savings to the municipality. If a community pays 50 percent less for disposal, that’s a result worth the effort.”

Jan Caterbury, USEPA